

JUL 19 2016

Form C-102

State of New Mexico
Energy, Minerals & Natural Resources Department
OIL CONSERVATION DIVISION
1220 South St. Francis Dr.
Santa Fe, NM 87505

Revised August 1, 2011
Submit one copy to appropriate
District Office

District I
1625 N. French Dr., Hobbs, NM 88240
Phone: (575) 393-6161 Fax: (575) 393-0720
District II
811 S. First St., Artesia, NM 88210
Phone: (575) 748-1283 Fax: (575) 748-9720
District III
1000 Rio Brazos Road, Aztec, NM 87410
Phone: (505) 334-6178 Fax: (505) 334-6170
District IV
1220 S. St. Francis Dr., Santa Fe, NM 87505
Phone: (505) 476-3460 Fax: (505) 476-3462

☐ AMENDED REPORT

WELL LOCATION AND ACREAGE DEDICATION PLAT

¹ API Number 30-025-43362	² Pool Code 97838	³ Pool Name JENNINGS UPPER Bone Spring shale
⁴ Property Code 316515	⁵ Property Name JENNINGS 34 A2MD FED COM	
⁷ OGRID NO. 14744	⁸ Operator Name MEWBOURNE OIL COMPANY	
		⁶ Well Number 1H
		⁹ Elevation 3317'

¹⁰ Surface Location

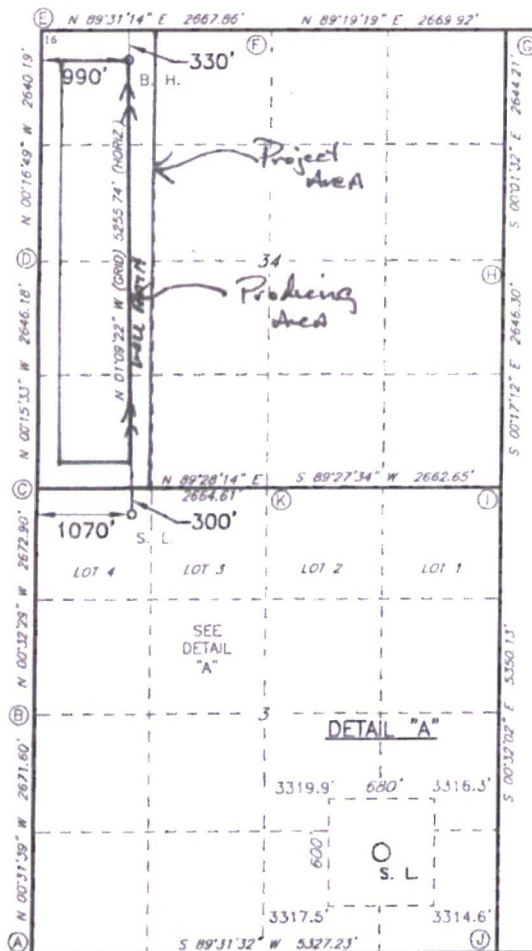
UL or lot no. AD	Section 3	Township 26S	Range 32E	Lot Idn	Feet from the 300	North/South line NORTH	Feet From the 1070	East/West line WEST	County LEA
----------------------------	---------------------	------------------------	---------------------	---------	-----------------------------	----------------------------------	------------------------------	-------------------------------	----------------------

¹¹ Bottom Hole Location If Different From Surface

UL or lot no. D	Section 34	Township 25S	Range 32E	Lot Idn	Feet from the 330	North/South line NORTH	Feet from the 990	East/West line WEST	County LEA
---------------------------	----------------------	------------------------	---------------------	---------	-----------------------------	----------------------------------	-----------------------------	-------------------------------	----------------------

¹² Dedicated Acres 160	¹³ Joint or Infill	¹⁴ Consolidation Code	¹⁵ Order No.
---	-------------------------------	----------------------------------	-------------------------

No allowable will be assigned to this completion until all interest have been consolidated or a non-standard unit has been approved by the division.

GEODETTIC DATA
NAD 27 GRID - NM EASTSURFACE LOCATION
N 392999.9 - E 706211.6

LAT: 32 07872317' N
LONG 103 66756037' W

BOTTOM HOLE
N 398263.5 - E 706105.6CORNER DATA
NAD 27 GRID - NM EAST

A. FOUND BRASS CAP "1939"
N 387946.7 - E 705188.9

B. FOUND BRASS CAP "1939"
N 390617.7 - E 705164.3

C. FOUND BRASS CAP "1916"
N 393289.9 - E 705139.1

D. FOUND BRASS CAP "1939"
N 395935.6 - E 705127.1

E. CALCULATED CORNER
N 398575.2 - E 705114.2

F. FOUND BRASS CAP "1939"
N 398597.5 - E 707781.4

G. FOUND BRASS CAP "1939"
N 398629.1 - E 710450.6

H. FOUND BRASS CAP "1939"
N 395985.4 - E 710451.8

I. FOUND BRASS CAP "1916"
N 393339.7 - E 710465.0

J. FOUND BRASS CAP "1939"
N 387990.8 - E 710514.9

K. FOUND BRASS CAP "1916"
N 393314.5 - E 707803.0

¹⁷ OPERATOR CERTIFICATION

I hereby certify that the information contained herein is true and complete to the best of my knowledge and belief, and that this organization either owns a working interest or unleased mineral interest in the land including the proposed bottom hole location or has a right to drill this well at this location pursuant to a contract with an owner of such a mineral or working interest, or to a voluntary pooling agreement or a compulsory pooling order heretofore entered by the division

Signature: **B. Bishop** Date: **9-29-15**

Printed Name: **BRADLEY BISHOP**

E-mail Address:

¹⁸ SURVEYOR CERTIFICATION

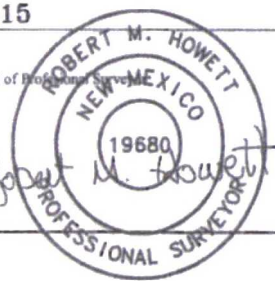
I hereby certify that the well location shown on this plat was plotted from field notes of actual surveys made by me or under my supervision, and that the same is true and correct to the best of my belief.

9-3-2015

Date of Survey

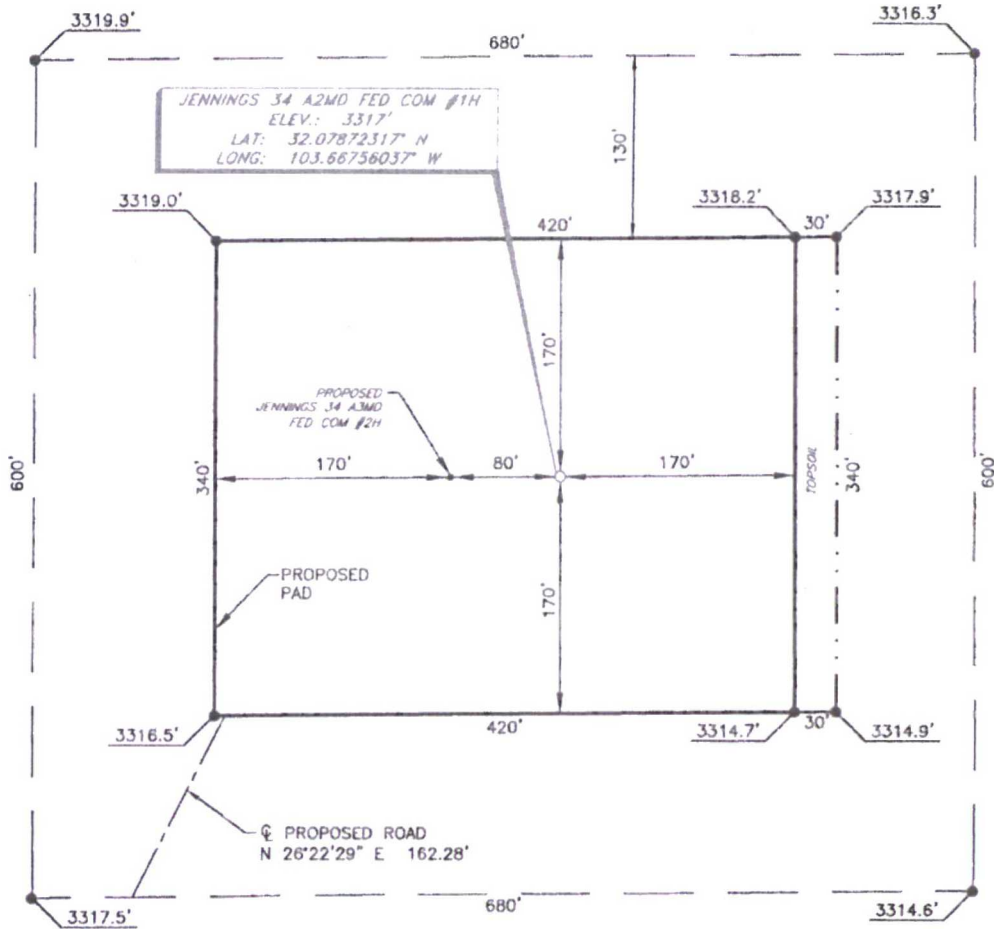
Signature and Seal of Professional Surveyor

19880
Certificate Number



3

MEWBOURNE OIL COMPANY
JENNINGS 34 A2MD FED COM #1H
(300' FNL & 1070' FWL)
SECTION 3, T26S, R32E
N. M. P. M., LEA COUNTY, NEW MEXICO



DIRECTIONS TO LOCATION

From the intersection of CR-1 (Orla Hwy.) and Pipeline Rd.
Go North on CR-1 approx. 0.9 miles to a lease road on the right;
Turn right and go East approx. 0.1 miles to the Southeast corner of existing pad;
Turn left and go North approx. 204 feet to a proposed road on the Northeast corner of existing pad;
Go Northeast on proposed road approx. 334 feet to location on the right.

SCALE: 1" = 100'
0 50 100

BEARINGS ARE
NAD 83 GRID - NM EAST
DISTANCES ARE GROUND

Firm No.: TX 10183838 NM 4655451

Copyright 2014 - All Rights Reserved

<div style="text-align: center;"> <h1>RRC</h1> <p>308 W. BROADWAY ST., HOBBS, NM 88240 (575) 964-8200</p> </div>			SCALE: 1" = 100'
			DATE: 9-3-2015
			SURVEYED BY: ML/CE
			DRAWN BY: LPS
NO. REVISION DATE			APPROVED BY: RMH
JOB NO.: LS1508446			SHEET : 1 OF 1
DWG. NO.: 1508446PAD			