

District I
1625 N. French Dr., Hobbs, NM 88240
Phone: (575) 393-6161 Fax: (575) 393-0720
District II
811 S. First St., Artesia, NM 88210
Phone: (575) 748-1283 Fax: (575) 748-9720
District III
1000 Rio Brazos Road, Aztec, NM 87410
Phone: (505) 334-6178 Fax: (505) 334-6170
District IV
1220 S. St. Francis Dr., Santa Fe, NM 87505
Phone: (505) 476-3460 Fax: (505) 476-3462

State of New Mexico
Energy, Minerals & Natural Resources
Department
OIL CONSERVATION DIVISION
1220 South St. Francis Dr.
Santa Fe, NM 87505

HOBBS OCD
MAR 06 2017
RECEIVED

FORM C-102
Revised August 1, 2011
Submit one copy to appropriate
District Office

☐ AMENDED REPORT

WELL LOCATION AND ACREAGE DEDICATION PLAT

¹ API Number 30-025-43395		² Pool Code 970	³ Pool Name AIRSTRIP;WOLFCAMP
⁴ Property Code 314818	⁵ Property Name AIRSTRIP 31-18S-35E RN STATE COM		⁶ Well Number #201H
⁷ OGRID No. 228937	⁸ Operator Name MATADOR PRODUCTION COMPANY		⁹ Elevation 3948'

¹⁰Surface Location

UL or lot no.	Section	Township	Range	Lot Idn	Feet from the	North/South line	Feet from the	East/West line	County
4	31	18-S	35-E	-	150'	SOUTH	330'	WEST	LEA

UL or lot no.	Section	Township	Range	Lot Idn	Feet from the	North/South line	Feet from the	East/West line	County
1	31	18-S	35-E	-	360'	NORTH	677'	WEST	LEA

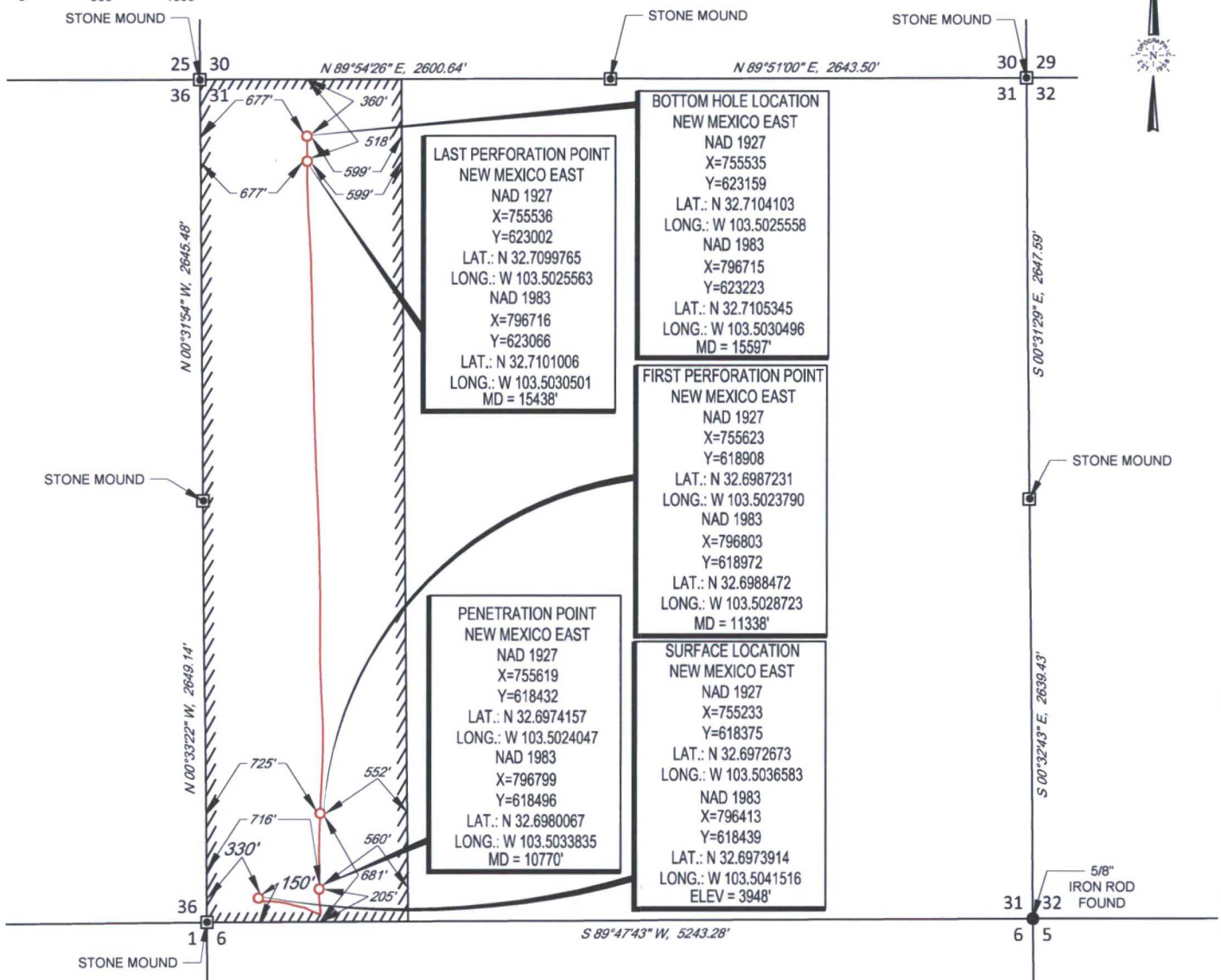
¹² Dedicated Acres 180	¹³ Joint or Infill 154.28	¹⁴ Consolidation Code	¹⁵ Order No.
--------------------------------------	---	----------------------------------	-------------------------

No allowable will be assigned to this completion until all interests have been consolidated or a non-standard unit has been approved by the division.

	LAST PERFORATION POINT NEW MEXICO EAST NAD 1927 X=755536 Y=623002 LAT.: N 32.7099765 LONG.: W 103.5025563 NAD 1983 X=796716 Y=623066 LAT.: N 32.7101006 LONG.: W 103.5030501 MD = 15438'	BOTTOM HOLE LOCATION NEW MEXICO EAST NAD 1927 X=755535 Y=623159 LAT.: N 32.7104103 LONG.: W 103.5025558 NAD 1983 X=796715 Y=623223 LAT.: N 32.7105345 LONG.: W 103.5030496 MD = 15597'	17 OPERATOR CERTIFICATION I hereby certify that the information contained herein is true and complete to the best of my knowledge and belief, and that this organization either owns a working interest or unleased mineral interest in the land including the proposed bottom hole location or has a right to drill this well at this location pursuant to a contract with an owner of such a mineral or working interest, or to a voluntary pooling agreement or a compulsory pooling order heretofore entered by the division. Signature _____ Date 3/2/17 Sam Pryor Printed Name SPryor@matadorresources.com E-mail Address	
	PENETRATION POINT NEW MEXICO EAST NAD 1927 X=755619 Y=618432 LAT.: N 32.6974157 LONG.: W 103.5024047 NAD 1983 X=796799 Y=618496 LAT.: N 32.6980067 LONG.: W 103.5033835 MD = 10770'	FIRST PERFORATION POINT NEW MEXICO EAST NAD 1927 X=755623 Y=618908 LAT.: N 32.6987231 LONG.: W 103.5023790 NAD 1983 X=796803 Y=618972 LAT.: N 32.6988472 LONG.: W 103.5028723 MD = 11338'		18 SURVEYOR CERTIFICATION I hereby certify that the well location shown on this plat was plotted from field notes of actual surveys made by me or under my supervision, and that the same is true to the best of my belief. Date of Survey 03/22/2016 Signature of Professional Surveyor Certificate Number
	SURFACE LOCATION NEW MEXICO EAST NAD 1927 X=755233 Y=618375 LAT.: N 32.6972673 LONG.: W 103.5036583 NAD 1983 X=796413 Y=618439 LAT.: N 32.6973914 LONG.: W 103.5041516 ELEV = 3948'			

SCALE: 1" = 1000'

SECTION 31, TOWNSHIP 18-S, RANGE 35-E, N.M.P.M.
LEA COUNTY, NEW MEXICO



LEASE NAME & WELL NO.: AIRSTRIP 31-18S-35E RN STATE COM #201H
SECTION 31 TWP 16-S RGE 35-E SURVEY N.M.P.M.
COUNTY EDDY STATE NM ELEVATION 3948'
DESCRIPTION 150' FSL & 330' FVL



TOPOGRAPHIC
LOYALTY INNOVATION LEGACY

1400 EVERMAN PARKWAY, Ste. 197 • FT. WORTH, TEXAS 76140
TELEPHONE: (817) 744-7512 • FAX (817) 744-7548
2903 NORTH BIG SPRING • MIDLAND, TEXAS 79705
TELEPHONE: (432) 682-1653 OR (800) 767-1653 • FAX (432) 682-1743
WWW.TOPOGRAPHIC.COM



Michael Blake Brown, P.S. No. 18329
JANUARY 20, 2017

AIRSTRIP 31-18S-35E RN
STATE COM #201H
AS-COMPLETED

REVISION:

INT DATE

DATE: 01/20/17

FILE: AD_AIRSTRIP_31-18S-35E_RN_STATE_COM_201H

DRAWN BY: EAH

SHEET: 1 OF 1

NOTES:

1. ORIGINAL DOCUMENT SIZE: 8.5" X 11"
2. ALL BEARINGS, DISTANCES, AND COORDINATE VALUES CONTAINED HEREIN ARE GRID BASED UPON THE NEW MEXICO STATE PLANE COORDINATE SYSTEM, EAST ZONE, U.S. SURVEY FEET, NORTH AMERICAN DATUM 1927.
3. CERTIFICATION IS MADE ONLY TO THE LOCATION OF THIS EASEMENT, IN RELATION TO THE EVIDENCE FOUND DURING A FIELD SURVEY, MADE ON THE GROUND, UNDER MY SUPERVISION, AND USING DOCUMENTATION PROVIDED BY MATADOR PRODUCTION COMPANY. ONLY UTILITIES/EASEMENTS THAT WERE VISIBLE ON THE DATE OF THIS SURVEY, WITHIN/ADJOINING THIS EASEMENT, HAVE BEEN LOCATED AS SHOWN HEREON OF WHICH I HAVE KNOWLEDGE. THIS CERTIFICATION IS LIMITED TO THOSE PERSONS OR ENTITIES SHOWN ON THE FACE OF THIS PLAT AND IS NON-TRANSFERABLE, AND MADE FOR THIS TRANSACTION ONLY.