

District I
1625 N. French Dr., Hobbs, NM 88240
Phone: (575) 393-6161 Fax: (575) 393-0720
District II
811 S. First St., Artesia, NM 88210
Phone: (575) 748-1283 Fax: (575) 748-9720
District III
1000 Rio Brazos Road, Aztec, NM 87410
Phone: (505) 334-6178 Fax: (505) 334-6170
District IV
1220 S. St. Francis Dr., Santa Fe, NM 87505
Phone: (505) 476-3460 Fax: (505) 476-3462

State of New Mexico
Energy, Minerals & Natural Resources
Department
OIL CONSERVATION DIVISION
1220 South St. Francis Dr.
Santa Fe, NM 87505

FORM C-102

Revised August 1, 2011

Submit one copy to appropriate

District Office

AMENDED REPORT

WELL LOCATION AND ACREAGE DEDICATION PLAT

¹ API Number 30-025- 42886	² Pool Code 98094	³ Pool Name WC-025 G-09 S253336D; Upper Wolfcamp
⁴ Property Code 39955	⁵ Property Name WHIRLING WIND 14 FED COM	⁶ Well Number #701H
⁷ OGRID No. 7377	⁸ Operator Name EOG RESOURCES, INC.	⁹ Elevation 3340'

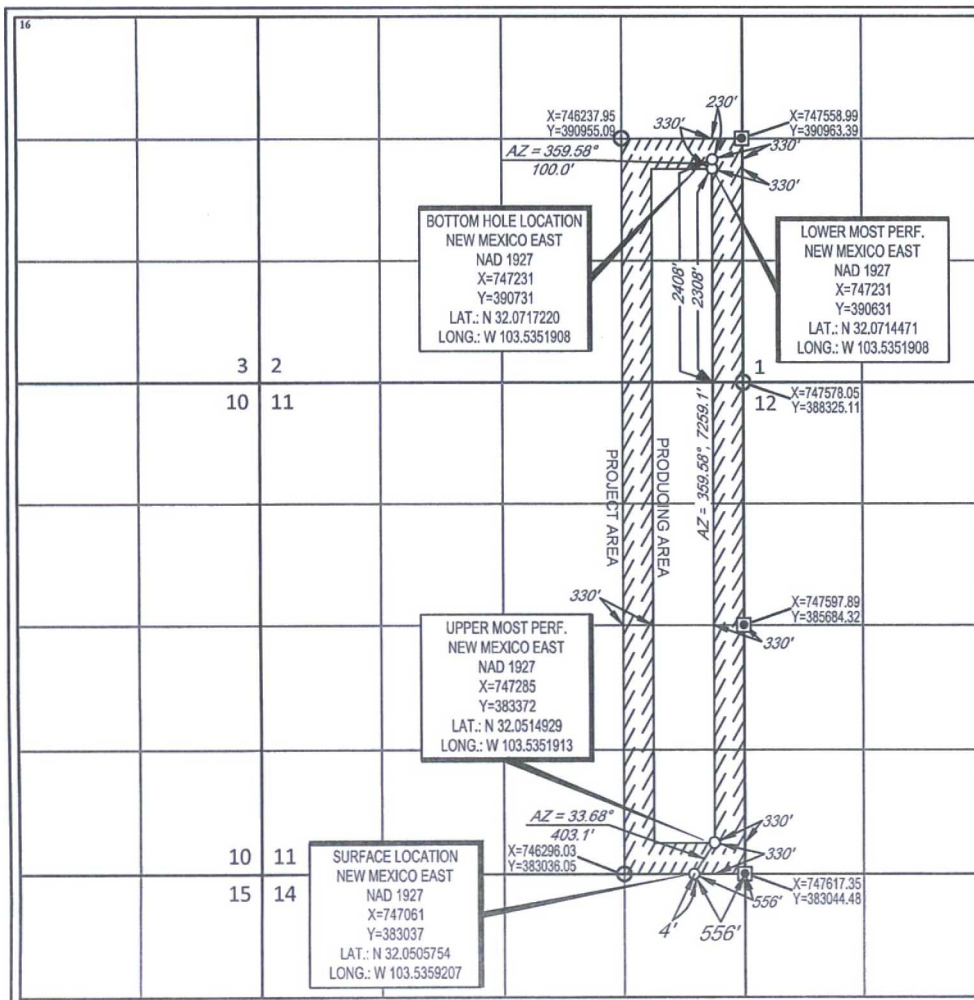
¹⁰Surface Location

UL or lot no. A	Section 14	Township 26-S	Range 33-E	Lot Idn -	Feet from the 4'	North/South line NORTH	Feet from the 556'	East/West line EAST	County LEA
---------------------------	----------------------	-------------------------	----------------------	---------------------	----------------------------	----------------------------------	------------------------------	-------------------------------	----------------------

UL or lot no. I	Section 2	Township 26-S	Range 33-E	Lot Idn -	Feet from the 2408'	North/South line SOUTH	Feet from the 328	East/West line EAST	County LEA
---------------------------	---------------------	-------------------------	----------------------	---------------------	-------------------------------	----------------------------------	-----------------------------	-------------------------------	----------------------

¹² Dedicated Acres 240.00	¹³ Joint or Infill	¹⁴ Consolidation Code	¹⁵ Order No.
--	-------------------------------	----------------------------------	-------------------------

No allowable will be assigned to this completion until all interests have been consolidated or a non-standard unit has been approved by the division.



¹⁷OPERATOR CERTIFICATION

I hereby certify that the information contained herein is true and complete to the best of my knowledge and belief, and that this organization either owns a working interest or unleased mineral interest in the land including the proposed bottom hole location or has a right to drill this well at this location pursuant to a contract with an owner of such a mineral or working interest, or to a voluntary pooling agreement or a compulsory pooling order heretofore entered by the division.

Stan Wagner 6/12/15
Signature Date

Stan Wagner

Printed Name

E-mail Address

¹⁸SURVEYOR CERTIFICATION

I hereby certify that the well location shown on this plat was plotted from field notes of actual surveys made by me or under my supervision, and that the same is true to the best of my belief.

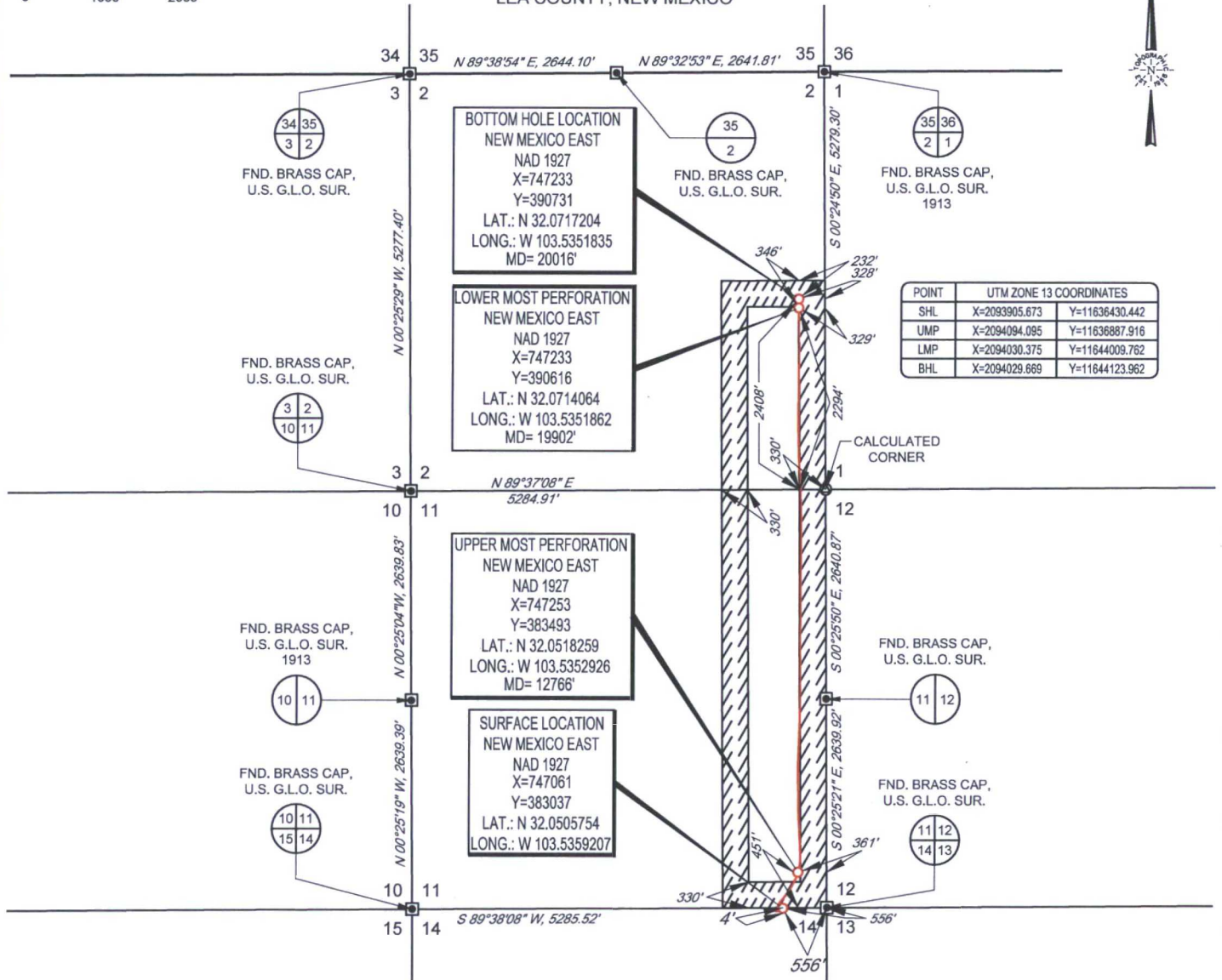
4/7/2015
Date of Survey
Signature and Seal of Professional Surveyor
MICHAEL BROWN
NEW MEXICO
18329
PROFESSIONAL SURVEYOR

Certificate Number

SCALE: 1" = 2000'

0' 1000' 2000'

SECTION 14, TOWNSHIP 26-S, RANGE 33-E, N.M.P.M.
LEA COUNTY, NEW MEXICO

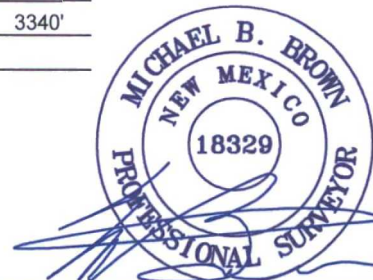


LEASE NAME & WELL NO.: WHIRLING WIND 14 FED COM #701H
SECTION 14 TWP 26-S RGE 33-E SURVEY N.M.P.M.
COUNTY LEA STATE NM ELEVATION 3340'
DESCRIPTION 4' FNL & 556' FEL



TOPOGRAPHIC
LOYALTY INNOVATION LEGACY

1400 EVERMAN PARKWAY, Ste. 197 • FT. WORTH, TEXAS 76140
TELEPHONE: (817) 744-7512 • FAX (817) 744-7548
2903 NORTH BIG SPRING • MIDLAND, TEXAS 79705
TELEPHONE: (432) 682-1653 OR (800) 767-1653 • FAX (432) 682-1743
WWW.TOPOGRAPHIC.COM



Michael Blake Brown, P.S. No. 18329
FEBRUARY 1, 2017



WHIRLING WIND 14 FED COM #701H AS-COMPLETED	REVISION:	<p>NOTES:</p> <ol style="list-style-type: none"> 1. ORIGINAL DOCUMENT SIZE: 8.5" X 11" 2. ALL BEARINGS, DISTANCES, AND COORDINATE VALUES CONTAINED HEREIN ARE GRID BASED UPON THE NEW MEXICO STATE PLANE COORDINATE SYSTEM, EAST ZONE, U.S. SURVEY FEET, NORTH AMERICAN DATUM 1927. 3. THIS WELL LOCATION SHOWN HEREON HAS BEEN SURVEYED ON THE GROUND UNDER MY SUPERVISION AND PREPARED ACCORDING TO THE EVIDENCE FOUND AT THE TIME OF SURVEY, AND DATA PROVIDED BY EOG RESOURCES, INC. THIS CERTIFICATION IS MADE AND LIMITED TO THOSE PERSONS OR ENTITIES SHOWN ON THE FACE OF THIS PLAT AND IS NON-TRANSFERABLE. THIS SURVEY IS CERTIFIED FOR THIS TRANSACTION ONLY.
DATE: 02/01/17		
FILE: AD_WHIRLINGWIND14FEDCOM_701H		
DRAWN BY: A.C.C.		
SHEET: 1 OF 1		