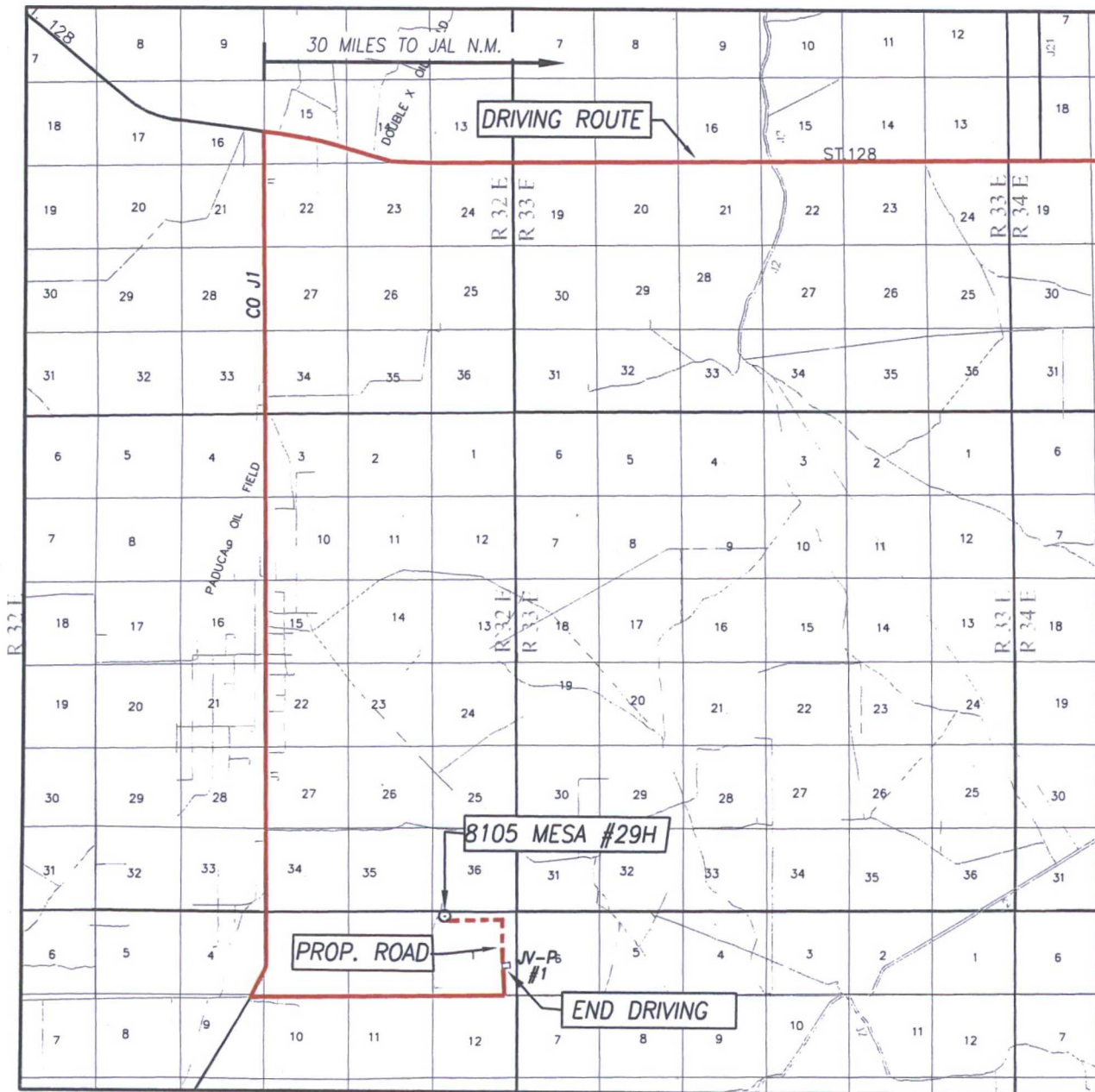
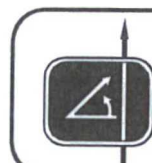


VICINITY MAP



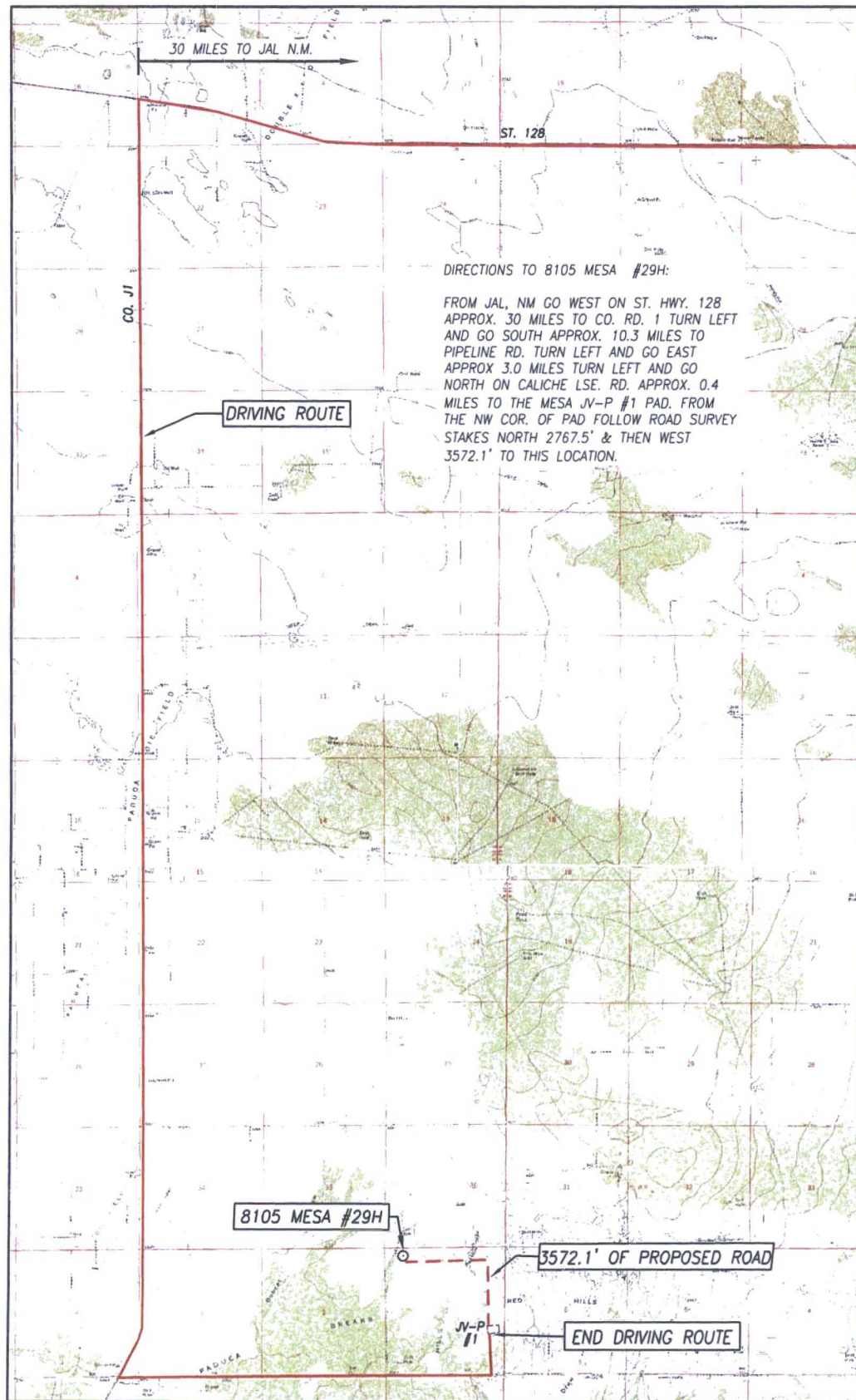
SCALE: 1" = 2 MILES
DRIVING ROUTE: SEE LOCATION VERIFICATION MAP

SEC. 1 TWP. 26-S RGE. 32-E
SURVEY N.M.P.M.
COUNTY LEA STATE NEW MEXICO
DESCRIPTION 330' FNL & 810' FWL
ELEVATION 3332'
OPERATOR BTA OIL PRODUCERS, LLC
LEASE 8105 MESA



PROVIDING SURVEYING SERVICES
SINCE 1946
JOHN WEST SURVEYING COMPANY
412 N. DAL PASO HOBBS, N.M. 88240
(575) 393-3117 www.jwsc.biz
TBPLS# 10021000

LOCATION VERIFICATION MAP

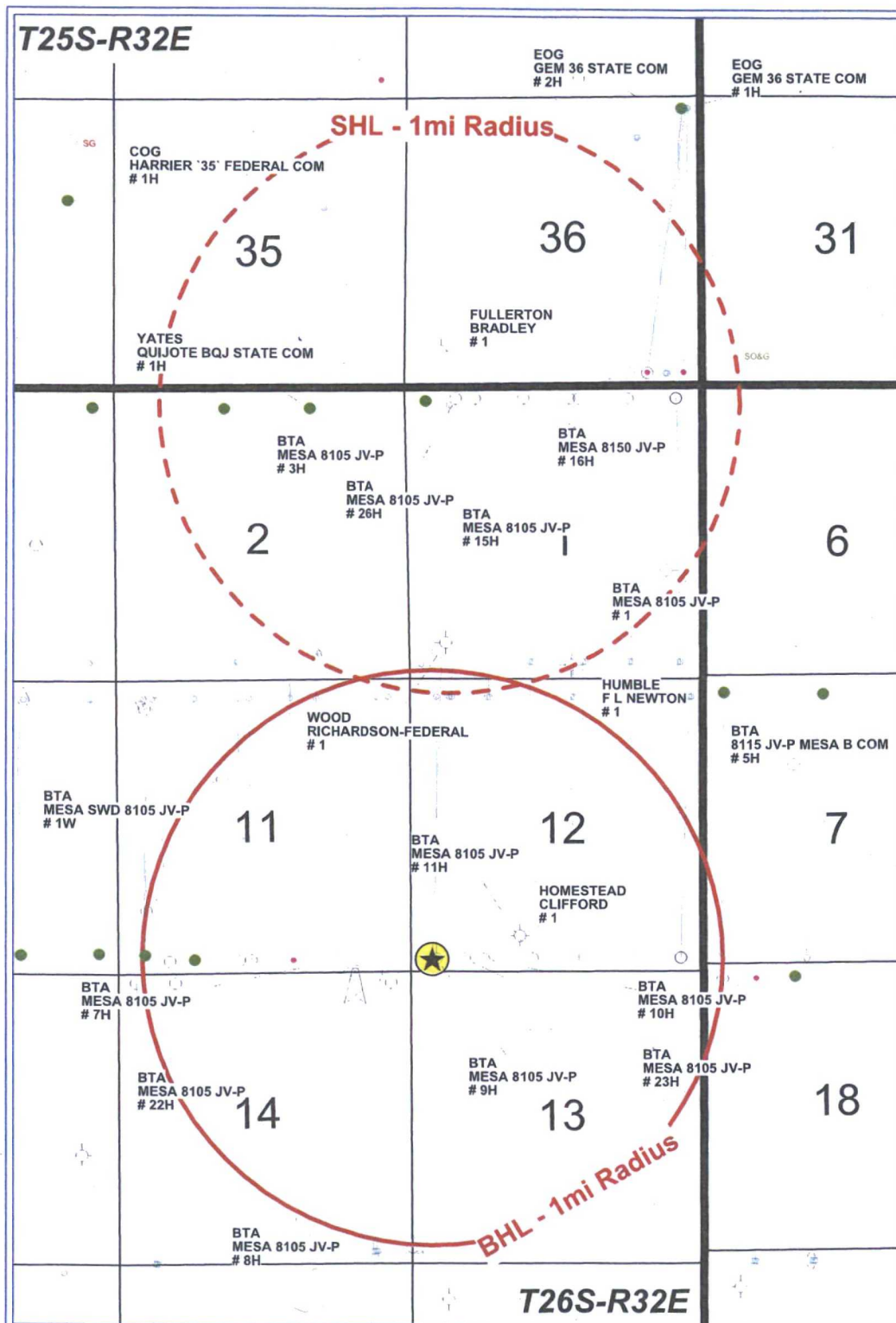


SEC. 1 TWP. 26-S RGE. 32-E
 COUNTY LEA STATE NEW MEXICO
 DESCRIPTION 330' FNL & 810' FWL
 ELEVATION 3332'
 OPERATOR BTA OIL PRODUCERS, LLC
 LEASE 8105 MESA
 U.S.G.S. TOPOGRAPHIC MAP
 PADUCA BREAKS EAST, N.M. SURVEY N.M.P.M.

SCALE: 1" = 5280'

CONTOUR INTERVAL: BELL, N.M. - 10'
 PADUCA BREAKS SW, N.M. - 10'
 PADUCA BREAKS EAST, N.M. - 10'

PROVIDING SURVEYING SERVICES
 SINCE 1946
JOHN WEST SURVEYING COMPANY
 412 N. DAL PASO HOBBS, N.M. 88240
 (575) 393-3117 www.jwsc.biz
 TBPLS# 10021000



BTA Oil Producers, LLC

8105 JV-P Mesa 29H - 1 Mile Radius Map

SHL: 330FNL&810FWL, Sec.1, T26S-R32E

BHL: 230FSL&380FWL, Sec.12, T26S-R32E

Lea, County, New Mexico

- WELL SYMBOLS**
- ★ Proposed Location
 - Location Only
 - ⬆ Drilling Well
 - ⬆ Drilled, Waiting on Completion
 - ⬆ Completing/Completed
 - Oil Well
 - Gas Well
 - ⬆ Dry Hole
 - ⬆ Service Well
 - Junked
 - SG Dry Hole With Gas Show
 - SO&G Dry Hole With Oil & Gas Show
 - ⬆ Pilot Hole

REMARKS

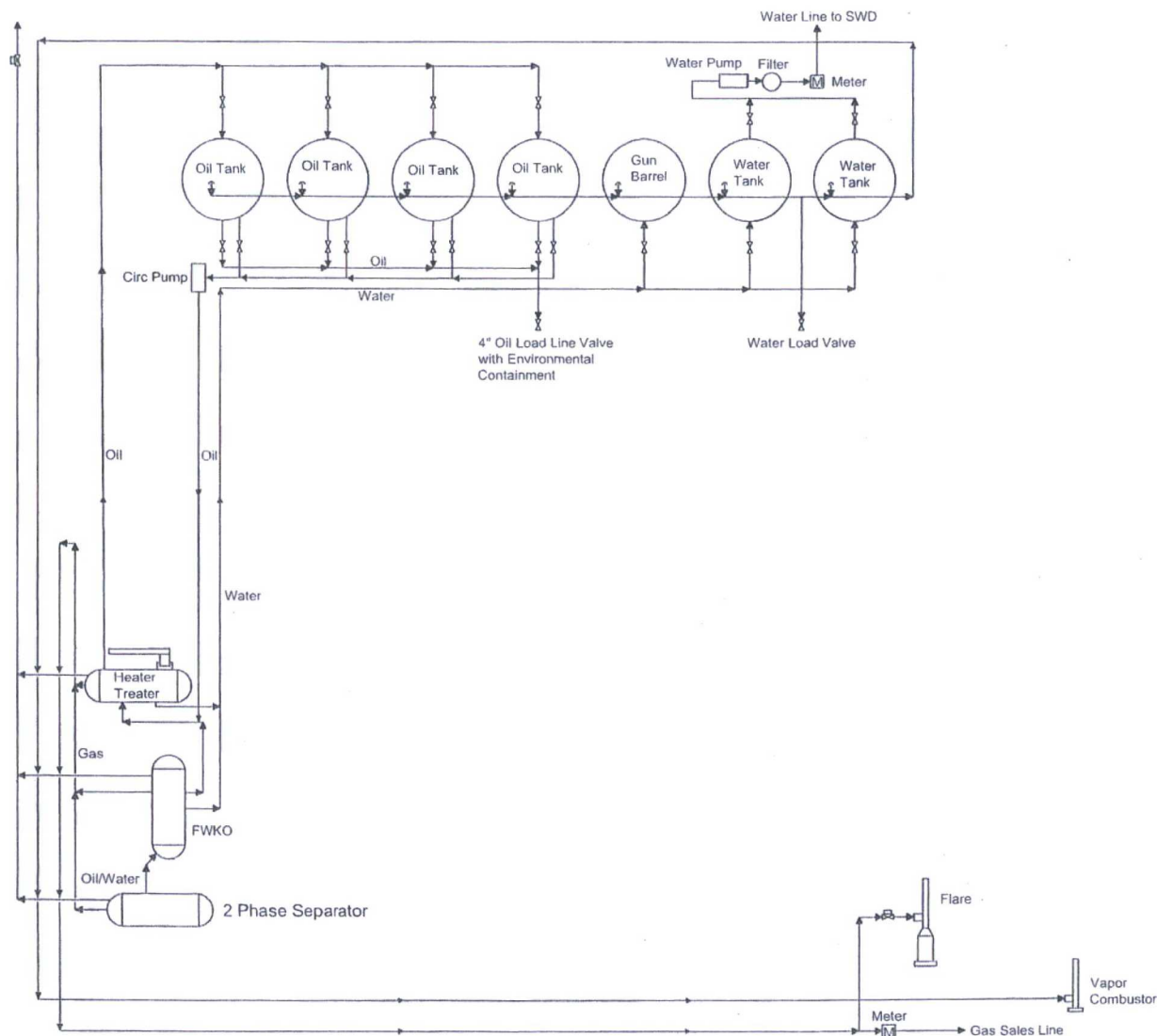
8105 JV-P Mesa 29H Highlighted in Yellow

BTA Acreage Highlighted in Lt. Blue

By: JHB



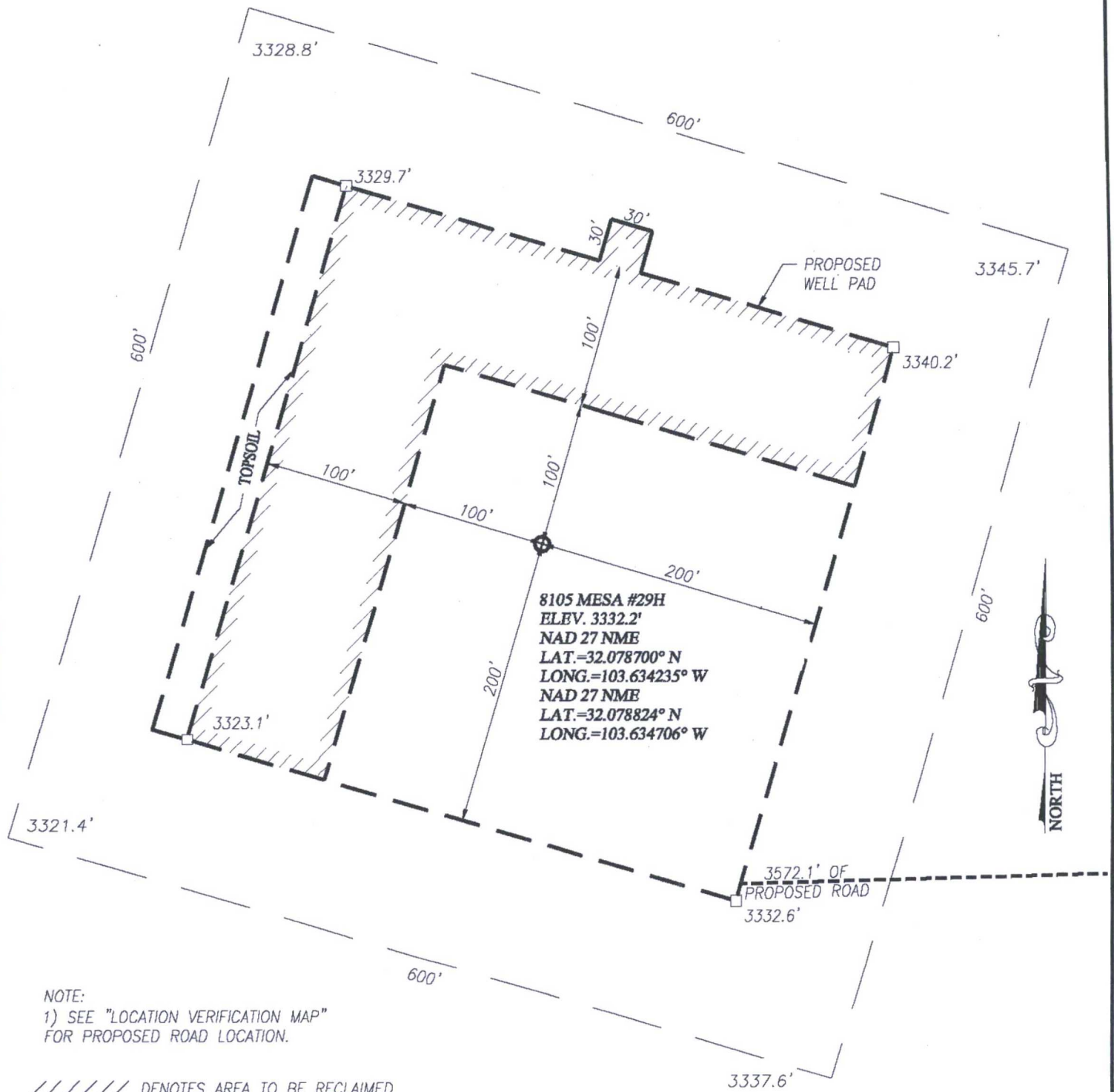
June 16, 2016



NOT TO SCALE

BTA Oil Producers, LLC

Mesa 8105 JV-P
-Proposed-
Central Tank Battery
 Section 1, T26S-R32E
 Lea County, NM



DIRECTIONS TO 8105 MESA #29H:

FROM JAL, NM GO WEST ON ST. HWY. 128 APPROX. 30 MILES TO CO. RD. 1 TURN LEFT AND GO SOUTH APPROX. 10.3 MILES TO PIPELINE RD. TURN LEFT AND GO EAST APPROX 3.0 MILES TURN LEFT AND GO NORTH ON CALICHE LSE. RD. APPROX. 0.4 MILES TO THE MESA JV-P #1 PAD. FROM THE NW COR. OF PAD FOLLOW ROAD SURVEY STAKES NORTH 2767.5' & THEN WEST 3572.1' TO THIS LOCATION.



Scale: 1"=100'

BTA OIL PRODUCERS, LLC

8105 MESA #29H WELL
LOCATED 330 FEET FROM THE NORTH LINE
AND 810 FEET FROM THE WEST LINE OF SECTION 1,
TOWNSHIP 26 SOUTH, RANGE 32 EAST, N.M.P.M.,
LEA COUNTY, NEW MEXICO

PROVIDING SURVEYING SERVICES
SINCE 1946

JOHN WEST SURVEYING COMPANY

412 N. DAL PASO HOBBS, N.M. 88240

(575) 393-3117 www.jwsc.biz

TBPLS# 10021000

Survey Date: 11/21/14

CAD Date: 12/31/14

Drawn By: LSL

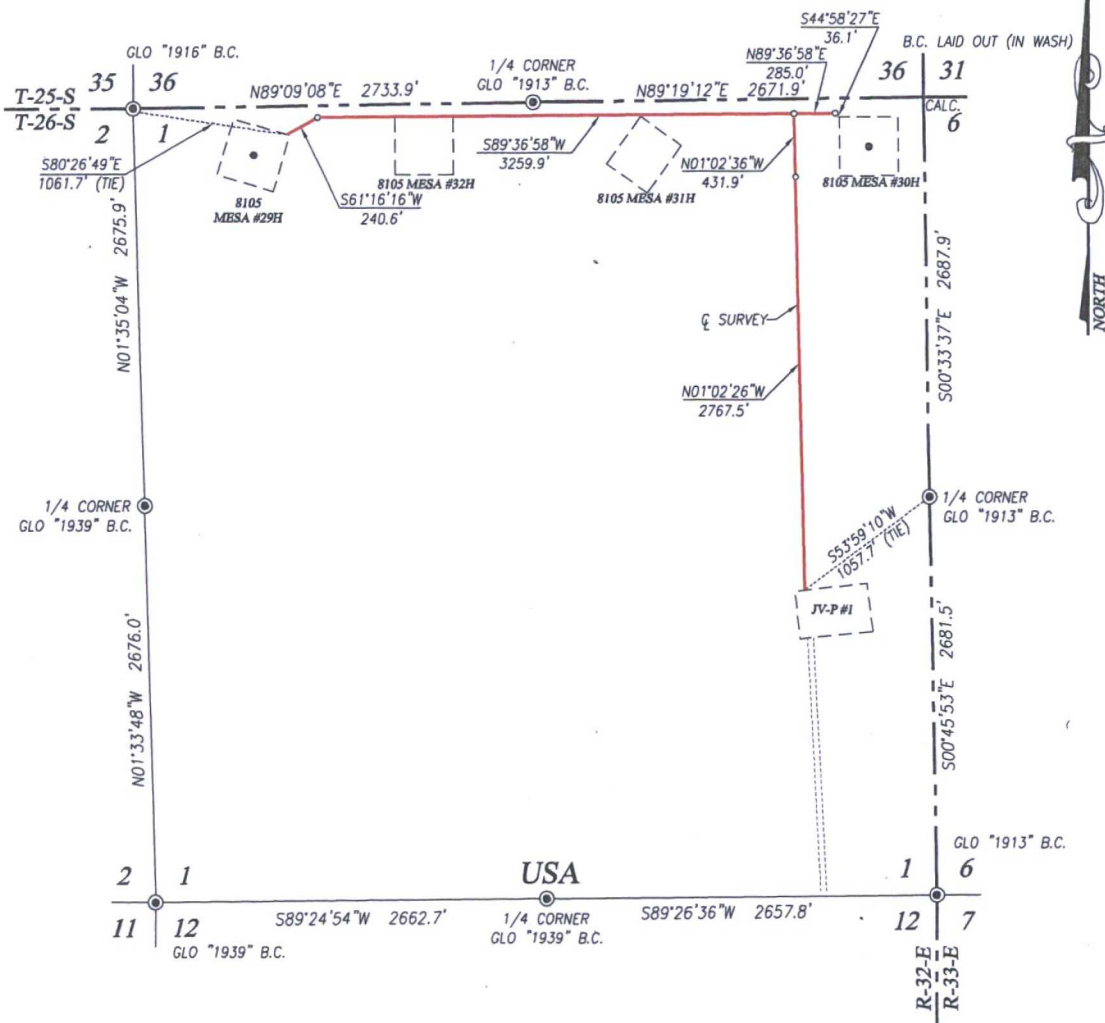
W.O. No.: 14111285

Rev.:

Rel. W.O.:

Sheet 1 of 1





DESCRIPTION

SURVEY OF A STRIP OF LAND 30.0 FEET WIDE AND 7019.0 FEET OR 1.329 MILES IN LENGTH CROSSING USA LAND IN SECTION 1, TOWNSHIP 26 SOUTH, RANGE 32 EAST, N.M.P.M., LEA COUNTY, NEW MEXICO, AND BEING 15.0 FEET LEFT AND 15.0 FEET RIGHT OF THE ABOVE PLATTED CENTERLINE SURVEY.

NOTE

BEARINGS SHOWN HEREON ARE MERCATOR GRID AND CONFORM TO THE NEW MEXICO COORDINATE SYSTEM NEW MEXICO EAST ZONE NORTH AMERICAN DATUM 1983. DISTANCES ARE SURFACE VALUES.

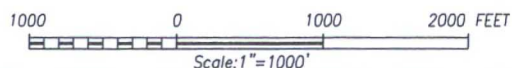
I, RONALD J. EIDSON, NEW MEXICO PROFESSIONAL SURVEYOR No. 3239, DO HEREBY CERTIFY THAT THE SURVEY PLAT AND THE ACTUAL SURVEY ON THE GROUND UPON WHICH IT IS BASED WERE PERFORMED BY ME OR UNDER MY DIRECT SUPERVISION; THAT I AM RESPONSIBLE FOR THIS SURVEY; THAT THIS SURVEY MEETS THE MINIMUM STANDARDS FOR SURVEYING IN NEW MEXICO; AND THAT IT IS TRUE AND CORRECT TO THE BEST OF MY KNOWLEDGE AND BELIEF.

RONALD J. EIDSON *Ronald J. Eidson*

DATE: 6/15/2016

LEGEND

● DENOTES FOUND CORNER AS NOTED



BTA OIL PRODUCERS, LLC

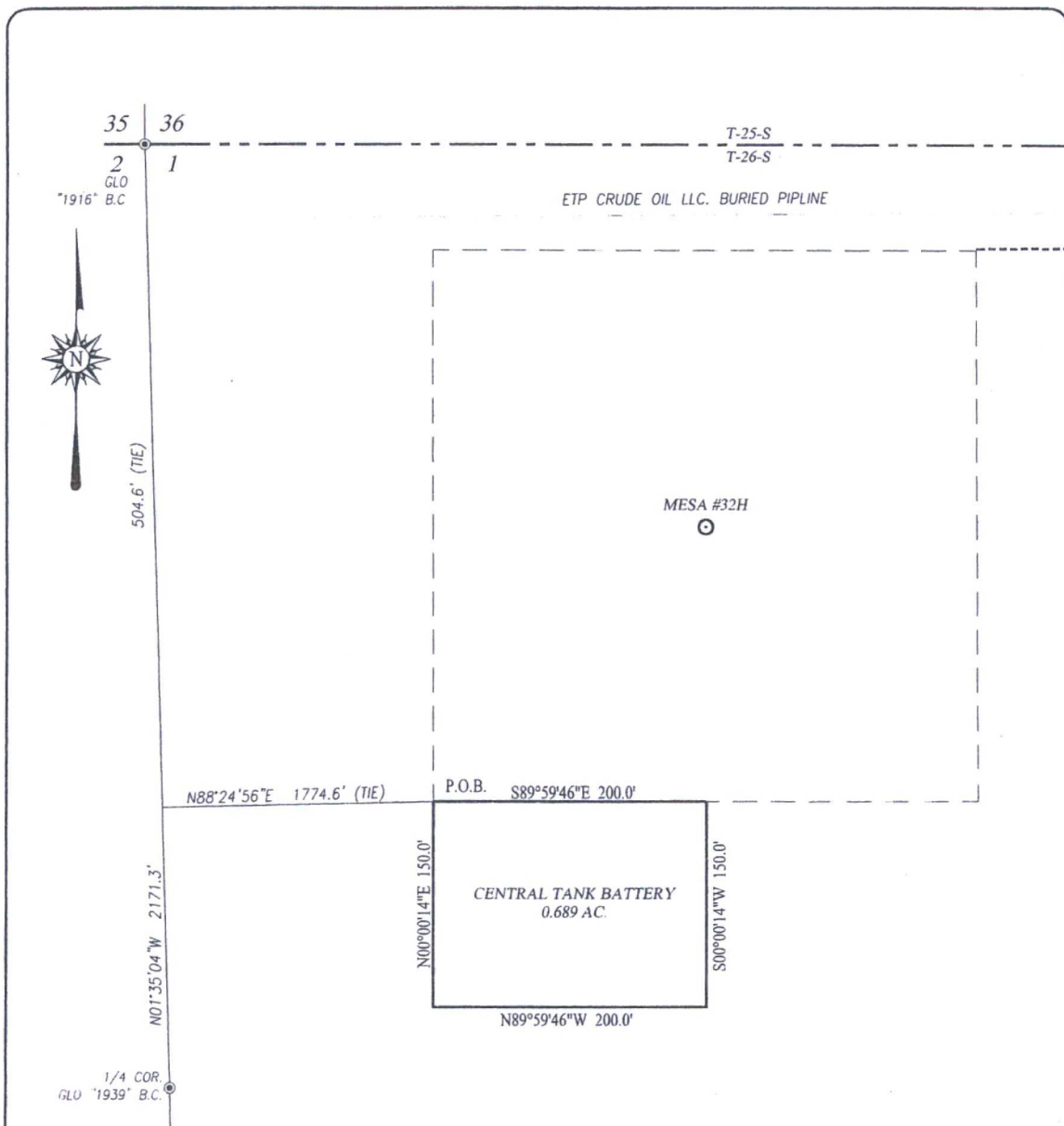
SURVEY FOR AN ACCESS ROAD
CROSSING SECTION 1,
TOWNSHIP 26 SOUTH, RANGE 32 EAST, N.M.P.M.
LEA COUNTY, NEW MEXICO



PROVIDING SURVEYING SERVICES
SINCE 1946
JOHN WEST SURVEYING COMPANY
412 N. DAL PASO HOBBS, N.M. 88240
(575) 393-3117 www.jwsc.biz
TBPLS# 10021000

Survey Date: 6/01/16	CAD Date: 6/14/15	Drawn By: ACK
W.O. No.: 16110430	Rev.:	Rel. W.O.: 14111286

Sheet 1 of 1



DESCRIPTION:

A TRACT SITUATED IN THE NORTHEAST QUARTER OF SECTION 1, TOWNSHIP 26 SOUTH, RANGE 32 EAST, N.M.P.M., LEA COUNTY, NEW MEXICO AND BEING MORE PARTICULARLY DESCRIBED AS FOLLOWS:

BEGINNING AT THE NORTHEAST CORNER WHICH LIES S01°35'04"E 504.6 FEET AND N88°24'56"E 1774.6 FEET FROM THE NORTHWEST CORNER; THEN S89°59'46"E 200.0 FEET; THEN S00°00'14"W 150.0 FEET; THEN N89°59'46"W 200.0 FEET; THEN N00°00'14"E 150.0 FEET TO THE POINT OF BEGINNING AND CONTAINING 0.689 ACRES MORE OR LESS.

NOTE

BEARINGS SHOWN HEREON ARE MERCATOR GRID AND CONFORM TO THE NEW MEXICO COORDINATE SYSTEM "NEW MEXICO EAST ZONE" NORTH AMERICAN DATUM 1983. DISTANCES ARE SURFACE VALUES.

I, RONALD J. EIDSON, NEW MEXICO PROFESSIONAL SURVEYOR No. 3239, DO HEREBY CERTIFY THAT THIS SURVEY PLAT AND THE ACTUAL SURVEY ON THE GROUND UPON WHICH IT IS BASED WERE PERFORMED BY ME OR UNDER MY DIRECT SUPERVISION; THAT I AM RESPONSIBLE FOR THIS SURVEY; THAT THIS SURVEY MEETS THE MINIMUM STANDARDS FOR SURVEYING IN NEW MEXICO; AND THAT IT IS TRUE AND CORRECT TO THE BEST OF MY KNOWLEDGE AND BELIEF.

RONALD J. EIDSON

DATE:

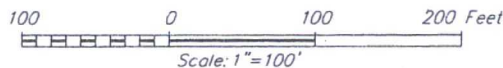
6/15/2016



PROVIDING SURVEYING SERVICES
SINCE 1946
JOHN WEST SURVEYING COMPANY
412 N. DAL PASO HOBBS, N.M. 88240
(575) 393-3117 www.jwsc.biz
TBPLS# 10021000

LEGEND

⊙ DENOTES FOUND CORNER AS NOTED



BTA OIL PRODUCERS, LLC

SURVEY FOR A TANK BATTERY FOR THE
8105 MESA #32H SITUATED IN THE NE/4 OF SECTION 1,
TOWNSHIP 26 SOUTH, RANGE 32 EAST, N.M.P.M.
LEA COUNTY, NEW MEXICO

Survey Date: 6/01/16	CAD Date: 6/14/16	Drawn By: ACK
W.O. No.: 16110430	Rev:	Rel. W.O.:

Sheet 1 of 1

Water Source and Transportation Map
Mesa 8105 JV-P #29H

Mesa 8105 JV-P #29H

Charger Pit - Lat 31.999127 Long. -103.716019

