

District I
1625 N. French Dr., Hobbs, NM 88240
Phone: (575) 393-6161 Fax: (575) 393-0720
District II
811 S. First St., Artesia, NM 88210
Phone: (575) 748-1283 Fax: (575) 748-9720
District III
1000 Rio Brazos Road, Aztec, NM 87410
Phone: (505) 334-6178 Fax: (505) 334-6170
District IV
1220 S. St. Francis Dr., Santa Fe, NM 87505
Phone: (505) 476-3460 Fax: (505) 476-3462

State of New Mexico
Energy, Minerals & Natural Resources
Department
OIL CONSERVATION DIVISION
1220 South St. Francis Dr.
Santa Fe, NM 87505

FORM C-102

Revised August 1, 2011

Submit one copy to appropriate

District Office

☐ AMENDED REPORT

WELL LOCATION AND ACREAGE DEDICATION PLAT

¹ API Number 30-025-43403	² Pool Code 98097	³ Pool Name WC-025 G-09 S263327G; Upper Wolfcamp
⁴ Property Code 316008	⁵ Property Name BRASWELL 16 STATE	⁶ Well Number #708H
⁷ OGRID No. 7377	⁸ Operator Name EOG RESOURCES, INC.	⁹ Elevation 3280'

¹⁰Surface Location

UL or lot no. D	Section 16	Township 26-S	Range 33-E	Lot Idn -	Feet from the 270'	North/South line NORTH	Feet from the 770'	East/West line WEST	County LEA
--------------------	---------------	------------------	---------------	--------------	-----------------------	---------------------------	-----------------------	------------------------	---------------

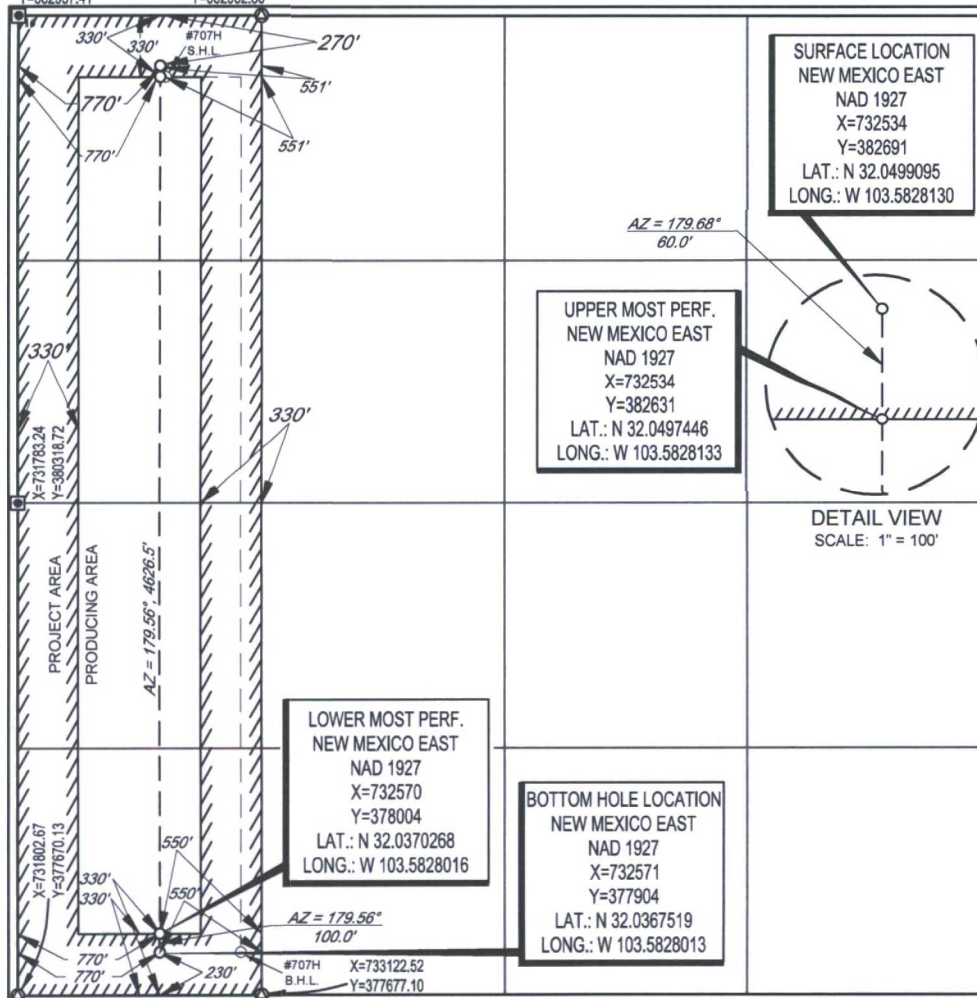
UL or lot no. M	Section 16	Township 26-S	Range 33-E	Lot Idn -	Feet from the 213	North/South line SOUTH	Feet from the 776	East/West line WEST	County LEA
--------------------	---------------	------------------	---------------	--------------	----------------------	---------------------------	----------------------	------------------------	---------------

¹² Dedicated Acres 160.00	¹³ Joint or Infill	¹⁴ Consolidation Code	¹⁵ Order No.
---	-------------------------------	----------------------------------	-------------------------

No allowable will be assigned to this completion until all interests have been consolidated or a non-standard unit has been approved by the division.

X=731781.78
Y=382957.41

X=733083.50
Y=382962.80



SURFACE LOCATION
NEW MEXICO EAST
NAD 1927
X=732534
Y=382691
LAT.: N 32.0499095
LONG.: W 103.5828130

UPPER MOST PERF.
NEW MEXICO EAST
NAD 1927
X=732534
Y=382631
LAT.: N 32.0497446
LONG.: W 103.5828133

DETAIL VIEW
SCALE: 1" = 100'

LOWER MOST PERF.
NEW MEXICO EAST
NAD 1927
X=732570
Y=378004
LAT.: N 32.0370268
LONG.: W 103.5828016

BOTTOM HOLE LOCATION
NEW MEXICO EAST
NAD 1927
X=732571
Y=377904
LAT.: N 32.0367519
LONG.: W 103.5828013

¹⁷OPERATOR CERTIFICATION

I hereby certify that the information contained herein is true and complete to the best of my knowledge and belief, and that this organization either owns a working interest or unleased mineral interest in the land including the proposed bottom hole location or has a right to drill this well at this location pursuant to a contract with an owner of such a mineral or working interest, or to a voluntary pooling agreement or a compulsory pooling order heretofore entered by the division.

Stan Wagner 9/7/16
Signature Date
Stan Wagner
Printed Name
E-mail Address

¹⁸SURVEYOR CERTIFICATION

I hereby certify that the well location shown on this plat was plotted from field notes of actual surveys made by me or under my supervision, and that the same is true to the best of my belief.

08/26/2016
Date of Survey
Signature and Seal of Professional Surveyor
MICHAEL B. BROWN
NEW MEXICO
18329
PROFESSIONAL SURVEYOR
Certificate Number