

Bureau of Land Management
Hobbs Field Office
414 W. Taylor
Hobbs, New Mexico
505.393.3612

WATER PRODUCTION & DISPOSAL INFORMATION

Well: RATTLESNAKE 28 FED COM #707H
NENW Sec 28 T26S, R33E
30-025-43525

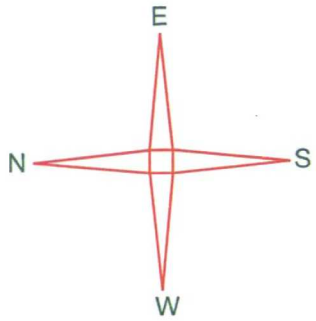
HOBBS FIELD OFFICE
MAY 24 2017
RECEIVED

1. Name of formations producing water on lease: WOLFCAMP
2. Amount of water produced from all formations in barrels per day 1000-6000 BWPD
3. How water is stored on lease Tanks 4-500 bbl tanks
4. How water is moved to disposal facility Pipeline/Trucked
5. Disposal Facility:
 - a. Facility Operators name EOG Resources
 - b. Name of facility or well name & number

Endurance 25 Federal #2
30-025-41067
Unit ltr E Sec 25, T26S, R33E
2310 FNL & 990 FWL
SWD – 1424

Also goes to EOG Water Gathering system

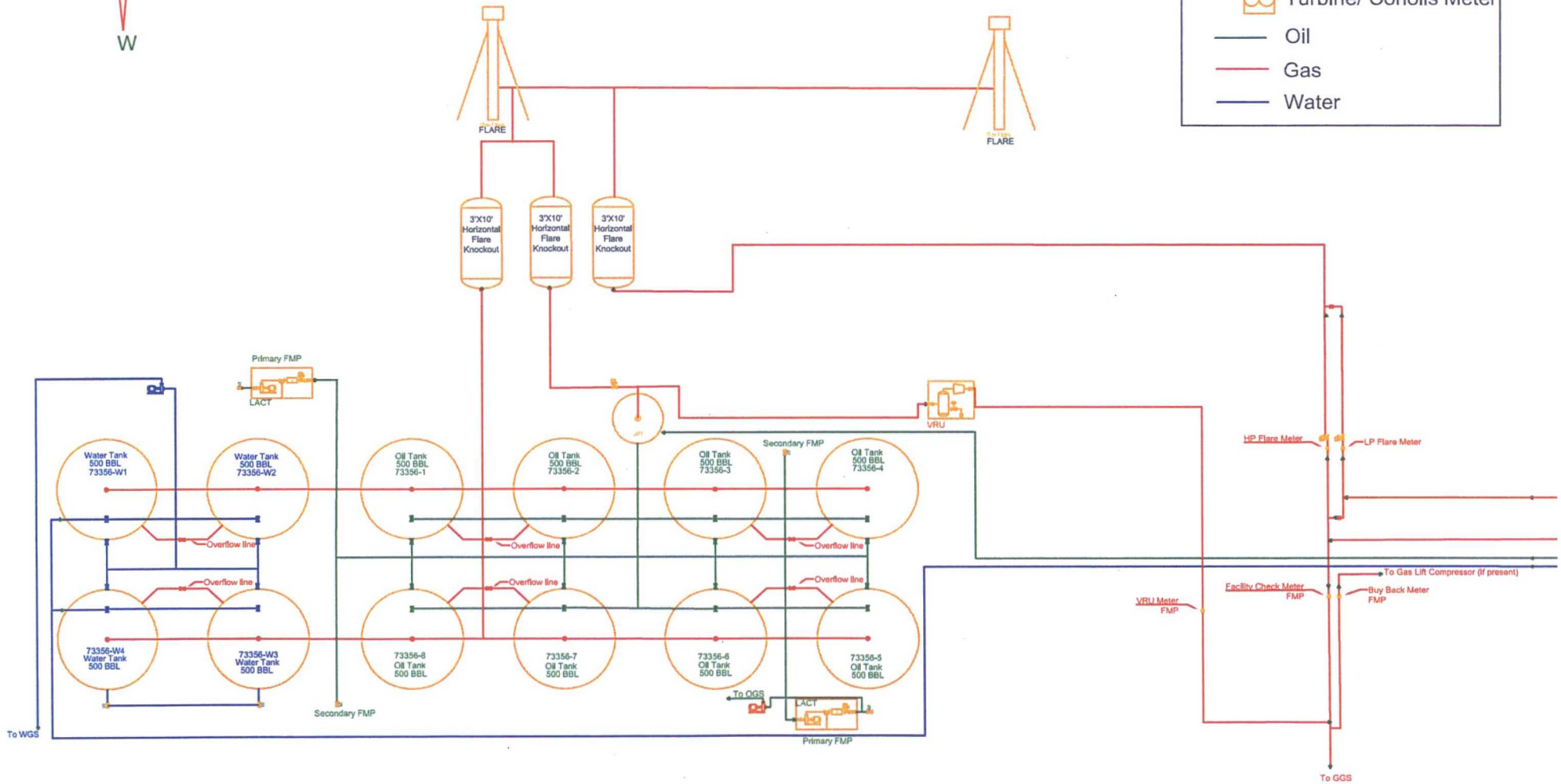
- c. Type of facility or wells SWD



EOG Resources, Inc.
Rattlesnake 28 West CTB
 Lease NM - #89519
 28-T26S-R33E

LEGEND

- Valve Open
- Valve Closed
- Valve Sealed
- Orifice Meter
- Turbine/ Coriolis Meter
- Oil
- Gas
- Water



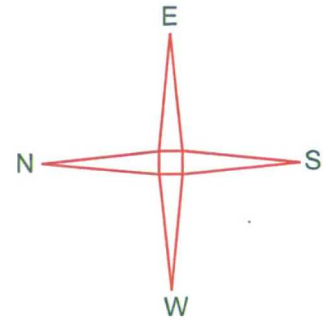
FACILITY DIAGRAM

Shown: Major equipment, vessels, process piping, and valves
 Not shown: Auxiliary process systems such as fuel/ pilot gas system, roll lines, recirculating lines, vent lines, and small drain lines

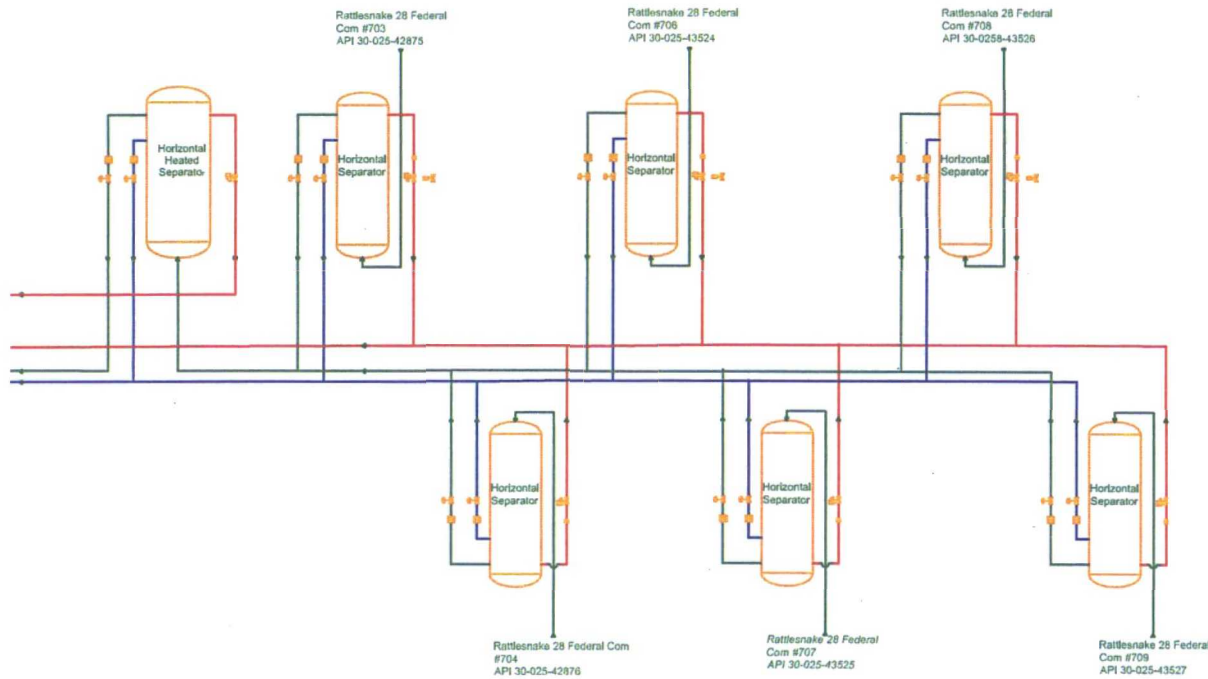
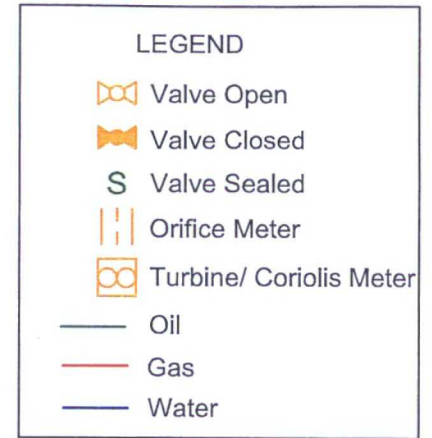
PRODUCTION PHASE: All valves that provide access to production are effectively sealed in the closed position.

SALES THROUGH LACT UNITS: Sale is measured through LACT units. All other valves that provide access to production (load-out valves) are effectively sealed in the closed position.

WATER TANKS: If the possibility for oil to enter water tanks exists through common recirculating or equalizing lines, oil tanks are isolated from water tanks by valves effectively sealed in the closed position.



EOG Resources, Inc.
 Rattlesnake 28 West CTB
 Lease NM - #89519
 28-T26S-R33E



FACILITY DIAGRAM

Shown: Major equipment, vessels, process piping, and valves
 Not shown: Auxiliary process systems such as fuel/ pilot gas system, roll lines, recirculating lines, vent lines, and small drain lines

PRODUCTION PHASE: All valves that provide access to production are effectively sealed in the closed position.

SALES THROUGH LACT UNITS: Sale is measured through LACT units. All other valves that provide access to production (load-out valves) are effectively sealed in the closed position.

WATER TANKS: If the possibility for oil to enter water tanks exists through common recirculating or equalizing lines, oil tanks are isolated from water tanks by valves effectively sealed in the closed position.