

Submit 1 Copy To Appropriate District Office
District I
1625 N. French Dr., Hobbs, NM 88240
District II
1301 W. Grand Ave., Artesia, NM 88210
District III
1000 Rio Brazos Rd., Aztec, NM 87410
District IV
1220 S. St. Francis Dr., Santa Fe, NM 87505

State of New Mexico
Energy, Minerals and Natural Resources

Form C-103
October 13, 2009

HOBBS

JUN 07 2017

RECEIVED

OIL CONSERVATION DIVISION

1220 South St. Francis Dr.
Santa Fe, NM 87505

WELL API NO. 30-025-32105
5. Indicate Type of Lease STATE <input checked="" type="checkbox"/> FEE <input type="checkbox"/>
6. State Oil & Gas Lease No. LG-2833
7. Lease Name or Unit Agreement Name Mobil Lea State
8. Well Number 3
9. OGRID Number 001092
10. Pool name or Wildcat Lea Delaware, NE

SUNDRY NOTICES AND REPORTS ON WELLS (DO NOT USE THIS FORM FOR PROPOSALS TO DRILL OR TO DEEPEN OR PLUG BACK TO A DIFFERENT RESERVOIR. USE "APPLICATION FOR PERMIT" (FORM C-101) FOR SUCH PROPOSALS.)	
1. Type of Well: Oil Well <input type="checkbox"/> Gas Well <input type="checkbox"/> Other <input type="checkbox"/> Injection well <input type="checkbox"/>	
2. Name of Operator Armstrong Energy Corporation	
3. Address of Operator P.O. Box 1973, Roswell, NM 88202-1973	
4. Well Location Unit Letter M : 990 feet from the South line and 870 feet from the West line Section 2 Township 20S Range 34E NMPM Lea County	
11. Elevation (Show whether DR, RKB, RT, GR, etc.)	

12. Check Appropriate Box to Indicate Nature of Notice, Report or Other Data

NOTICE OF INTENTION TO:

SUBSEQUENT REPORT OF:

PERFORM REMEDIAL WORK <input type="checkbox"/>	PLUG AND ABANDON <input type="checkbox"/>	REMEDIAL WORK <input checked="" type="checkbox"/>	ALTERING CASING <input type="checkbox"/>
TEMPORARILY ABANDON <input type="checkbox"/>	CHANGE PLANS <input type="checkbox"/>	COMMENCE DRILLING OPNS. <input type="checkbox"/>	P AND A <input type="checkbox"/>
PULL OR ALTER CASING <input type="checkbox"/>	MULTIPLE COMPL <input type="checkbox"/>	CASING/CEMENT JOB <input type="checkbox"/>	
DOWNHOLE COMMINGLE <input type="checkbox"/>			
OTHER: <input type="checkbox"/>		OTHER <input type="checkbox"/>	

13. Describe proposed or completed operations. (Clearly state all pertinent details, and give pertinent dates, including estimated date of starting any proposed work). SEE RULE 19.15.7.14 NMAC. For Multiple Completions: Attach wellbore diagram of proposed completion or recompletion.

4/17/17 RU PU, TOOHH with 2 3/8" , TIH w/4 3/4" mill tooth and tag bridge @ 6084' SISD.
4/18/17 RU PU and swivel and drill through bridge, tag bottom & circulate clean. TOOHH and stand back tbq. SISD.
4/19/17 PU retainer and set @ 5503', test backside and establish injection rate, pump 295sx "C" attempting to squeeze, no luck, over displace past retainer. Clean up and RD cementers, SISD.
4/20/17 SD WO cementers
4/21/17 RU cementers and attempt squeeze w/190sx "C" lead w/2% CaCl & tail "C" neat. Would not squeeze, over displace, SISD.
4/24/17 RU cementers and attempt squeeze w/190sx "C" lead w/2% CaCl & tail "C" neat. Would not squeeze, over displace, SISD.
4/25/17 RU cementers and attempt squeeze w/200sx "C" w/2% CaCl. Staged twice and well appeared to squeeze off and held. Sting out of retainer and reverse 96sx to pit. Clean up and RD cementers, SISD.
4/26/17 TOOHH w/WS and PU mill tooth TIH and tag cement at 5498' drill to top of retainer at 5503' SISD.

** (SEE PAGE 2) **

Spud Date:

Rig Release Date:

I hereby certify that the information above is true and complete to the best of my knowledge and belief.

SIGNATURE [Signature] TITLE Operations Manager DATE June 5, 2017

Type or print name Kyle Alpers E-mail address: kalpers@aecnrm.com PHONE: (575) 625-2222

For State Use Only

APPROVED BY: [Signature] TITLE AO/II DATE 6/13/2017

Conditions of Approval (if any):

RBDMS-CHART-✓

- 4/27/17 Drill on retainer no luck TOOH for broken bit. TIH w/new bit and drill retainer, circ clean on good cement at 5514', Sisd
- 4/28/17 Test squeeze at 5514', did not hold. Continue drill and test at 5546', 5624', and 5710' comparing bleed-offs. Sisd.
- 5/1/17 Break circ and drill to 5808' and test. Continue drill and fall out cement at 5959'. Tag bottom and circ, test hole, Sisd
- 5/2/17 TOOH and PU test packer and test casing at various depths, try to isolate leak. Sisd.
- 5/3/17 RU swab and check for fluid entry, rec 21BW and tbg swabbed down. TOH and LD test packer RU WL and run radial CBL. RD WL and TIH w/cement retainer, Sisd
- 5/4/17 Clear tbg and set cement retainer at 5496', RU cementers and establish injection rate and squeeze w/"C" w/2% CaCl. Achieved squeeze and sting out of retainer and reverse clean. RD cementers. Use RU to test small bleed off around 4911'. Bleed off from 550 psi to 450 psi in 10 minutes. Probably a very small collar leak but will not pass MIT test in future. Decide to extend length of liner above this spot to ensure well integrity.
- 5/5/17 TIH w/mill tooth and tag cement @ 5493' and on retainer at 5496', drill through retainer and cement to 5622', Sisd.
- 5/8/17 Drill cement to 5938', circ clean, Sisd.
- 5/9/17 Continue drill cement fell through at 5938'. Test casing and bleed offs indicate we're probably seeing the collar leak at 4911' (550# to 475# @ 10"). Tag bottom, circulate clean, TOOH and LD 39 jts 2 7/8" WS and stand back remainder prep to run liner. Sisd.
- 5/10/17 Run 2 jt 4" L80 10.9# FL4S liner w/float equipment (double shoe jt), 19 jts 4" C95 CR-13 10.9# FL4S liner, 14 jt L80 10.9# FL4S liner with nickel plated mechanical hanger and PBR. Liner top at 4826' liner bottom at 6243'. RU cementers and pump 80sx "C" w/FR. Displace at 1050 psi and land plug at 1928 psi, floats held, get off releasing tool pressure up on tbg and pump out of pack off. Tag liner and check set, good, LD 16 jts WS and reverse clean, no cement in returns. RD cementers, TOH, SI, use RU to load hole and pressure up to 1340 psi and leave pressure on well, SD.
- 5/11/17 WOC
- 5/12/17 PU mill tooth and TIH tag cement @ 4442', PU swivel and drill down to 4632', test to 1010 psi, no bleed off. SD for swivel repair
- 5/15/17 Drilling soft cement, cement hard at top of liner at 4826'. Pressure test at liner top, held. LD 41 jts and TOOH. PU 3 1/4" mill tooth and TIH to liner top, drill 5' cement, wash 4 jts down, LD swivel and TIH to bottom. Clean out to 6164' circulate. Sisd.
- 5/16/17 Test casing, held, circ clean w/ 2% KCL. LD 8 jts and TOH. RU WL and TIH w/Gamma, tie in and perforate 5918'-5936' 2 spf 60 deg phasing, 38 shots. RD WL and PU treating packer and TIH. Prep for acid, Sisd.
- 5/17/17 PU 4 jts and clear perfs, LD 4 jts and RU acidizers and spot 2 bbl 15% NEFE at 5926', set packer at 5600' and break down. Pump 2000 gal 15% NEFE w/ball sealers. ISIP 950#, 5"- 576#, 10"-201#, 15"-71#, 16" vac. RD acidizers, release pkr and TOOH. RU WL and perforate 5720'-26' 3 spf 9 holes, 5674'-96' 3 spf 33 holes, 5632'-46' 3 spf 21 holes. Top half of gun wired backward and fired when bottom gun did. Perforated 5610.1'-23.1' by mistake. Sisd.
- 5/18/17 SD and assess incorrect perfs. Determine perfs are in tight spot in same interval we intend to inject, will leave them alone.
- 5/19/17 Well on vac, RU WL, TIH and tie in, perf 5578'-5591' 3 spf 21 holes. RD WL, PU pkr and RBP and TIH, tight going into liner. Set RBP @ 5803', PU and set pkr, test RBP, good. Spot acid and SB 5 stands to set pkr. RU cementers and pump 4000 gal 15% NEFE w/200 ball sealers. Good ball action. Pump at 3.5 BPM & 1680 psi, when acid on increase to 4.5 BPM and 2000psi. ISIP 1100 psi, 5 min - 900 psi, 10 min - 860 psi, 15 min - 842 psi. RD acidizers and TIH w/13jts and tag. RU acid truck on csg and reverse circ to wash down onto RBP. Attempt to latch on, no luck. Sisd.
- 5/22/17 OW, no pressure. Start TOOH and well kicking with acid gas. SI, RU RU pump 70 bbl KCL down BS and work out bubble. SD, TOOH, LD treating pkr, PU Texas cut washover shoe and TIH to 4838'. Hang up inside liner. TOH, LD washover, Sisd.
- 5/23/17 Open well slight blow. PU tapered string mill and TIH. Did not tag, PU swivel and start milling at 4838'. Ream tight spots to 5497'. Circ clean and LD swivel. TOOH, LD tapered string mill, Sisd.
- 5/24/17 PU Texas cut washover shoe and TIH, tagged in releasing sleeve on liner hanger assembly. Work shoe through tight spot, start washing down to RBP, washed up 43 ball sealers. Circ clean, TOH, LD shoe and PU retrieving head and TIH. Latch up and TOH LD WS. Sisd.
- 5/25/17 Change out BOP rams to 2 3/8", RU tbg testers, PU 4" Arrowset nickel plated plastic coated packer and TIH testing. RD testers, ND BOP, PU hanger flange and circ 115bbl 2% KCL w/pkr fluid at 5533'. Set pkr at 5527' w/12 pts tension, NU flange and tree, test pkr and csg to 550psi for 35 minutes, held. Put well on injection at 391 BWPD @ 20 psi. SD

Amstar Energy Corp
Mch 7 Sea ST #3

API# 30-025-32105

ULM, Sec 2, TDS, 34K

990 FSL 870 FUL

Past War Power

Start: 550 PSI @ 4:50 AM

End: 550 PSI @ 5:25 PM

Meter Calibration D/L 3-6-17

1000# range, 60min

Today: 5-25-17

Top Ref. 5528

Packer depth 5527

Co. Mch 7 Sea ST #3

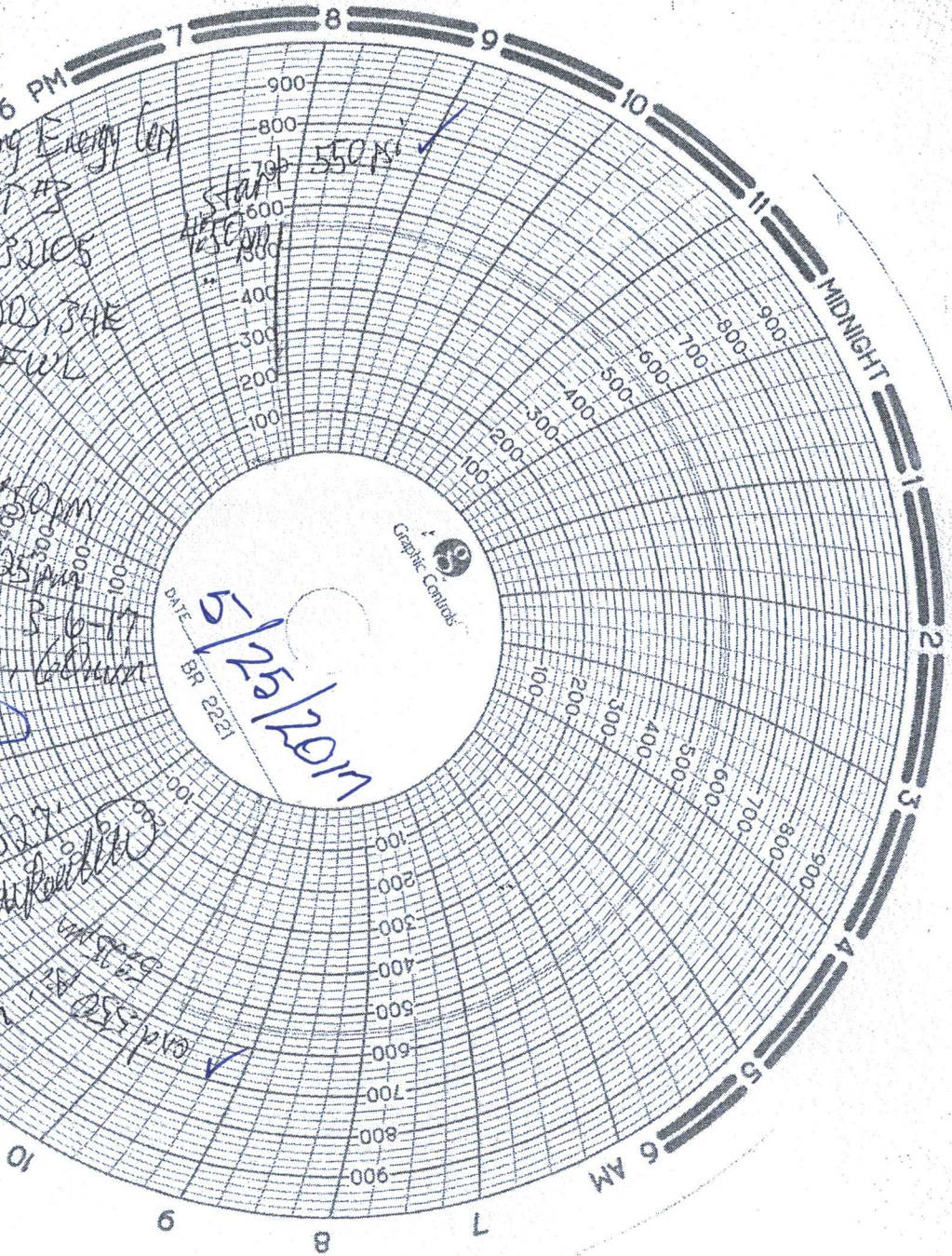
M&S Trucking

From Log

255 PSI ✓

Start 550 PSI ✓
4:50 AM

DATE 5/25/2017
BR 2221





500 North Main Street, Suite 200
P.O. Box 1973
Roswell, New Mexico 88202-1973
(575) 625-2222
Fax (575) 622-2512

June 5, 2017

HOBBS OCD
JUN 07 2017
RECEIVED

Mr. Paul Kautz
Oil Conservation Division
1625 N. French Drive
Hobbs, New Mexico 88240

Re: LG-2833
Mobil Lea State #3
Township 20 South, Range 34 East, NMPM
Section 2
Lea County, New Mexico

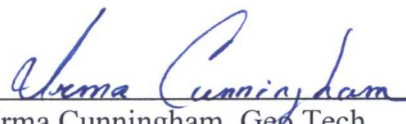
Dear Mr. Kautz:

Enclosed is a Sundry Notices and Reports on Wells, Subsequent Report, Liner, for the Mobil Lea State #3, to be filed with your office. .

If you have any questions, please contact Kyle Alpers at 575-625-2222.

Sincerely,

ARMSTRONG ENERGY CORPORATION

By: 
Irma Cunningham, Geo Tech

Enclosures