

Submit 1 Copy To Appropriate District Office
District I - (575) 393-6161
1625 N. French Dr., Hobbs, NM 88240
District II - (575) 748-1283
811 S. First St., Artesia, NM 88210
District III - (505) 334-6178
1000 Rio Brazos Rd., Aztec, NM 87410
District IV - (505) 476-3460
1220 S. St. Francis Dr., Santa Fe, NM 87505

State of New Mexico
Energy, Minerals and Natural Resources

Form C-103
Revised July 18, 2013

OIL CONSERVATION DIVISION
1220 South St. Francis Dr.
Santa Fe, NM 87505

WELL API NO. 30-025-29064
5. Indicate Type of Lease STATE <input type="checkbox"/> FEE <input checked="" type="checkbox"/>
6. State Oil & Gas Lease No. 19552
7. Lease Name or Unit Agreement Name North Hobbs Unit (G/SA)
8. Well Number 113
9. OGRID Number 157984
10. Pool name or Wildcat Hobbs (G/SA)
11. Elevation (Show whether DR, RKB, RT, GR, etc.) 3658' GR

SUNDRY NOTICES AND REPORTS ON WELLS
(DO NOT USE THIS FORM FOR PROPOSALS TO DRILL OR TO DEEPEN OR PLUG BACK TO A DIFFERENT RESERVOIR. USE "APPLICATION FOR PERMIT" (FORM C-104) FOR SUCH PROPOSALS.)

1. Type of Well: Oil Well ☐ Gas Well ☐ Other ☐ Injector

2. Name of Operator
Occidental Permian Ltd

3. Address of Operator
P.O. Box 4294, Houston, TX 77210

4. Well Location
Unit Letter D : 1310 feet from the North line and 195 feet from the West line
Section 30 Township 18S Range 38E NMPM County Lea

11. Elevation (Show whether DR, RKB, RT, GR, etc.)
3658' GR

12. Check Appropriate Box to Indicate Nature of Notice, Report or Other Data

NOTICE OF INTENTION TO:		SUBSEQUENT REPORT OF:	
PERFORM REMEDIAL WORK <input type="checkbox"/>	PLUG AND ABANDON <input type="checkbox"/>	REMEDIAL WORK <input checked="" type="checkbox"/>	ALTERING CASING <input type="checkbox"/>
TEMPORARILY ABANDON <input type="checkbox"/>	CHANGE PLANS <input type="checkbox"/>	COMMENCE DRILLING OPNS. <input type="checkbox"/>	P AND A <input type="checkbox"/>
PULL OR ALTER CASING <input type="checkbox"/>	MULTIPLE COMPL <input type="checkbox"/>	CASING/CEMENT JOB <input type="checkbox"/>	
DOWNHOLE COMMINGLE <input type="checkbox"/>			
CLOSED-LOOP SYSTEM <input type="checkbox"/>			
OTHER: <input type="checkbox"/>		OTHER: RTI <input type="checkbox"/>	

13. Describe proposed or completed operations. (Clearly state all pertinent details, and give pertinent dates, including estimated date of starting any proposed work). SEE RULE 19.15.7.14 NMAC. For Multiple Completions: Attach wellbore diagram of proposed completion or recompletion.

MIRU x NDWH x NUBOP. POOH 122 jts tbg x on&off tool x pkr. Circ well w/ 100 bbls BW getting some gas in returns. Retested tbg to 2000 psi which lost 70psi in 20 mins x retested csg to 600 psi, held ok. Circ w/ 100 bbls pkr fluid. RIH w/ new injection equipment x set pkr @ 4004' x 122 jts new tbg @ 4132' x on/off tool @ 3996'. Ran MIT x passed - Chart attached. RD x NDBOP x NUWH. Return well to injection.

Spud Date:

05/03/17

Rig Release Date:

05/08/17

I hereby certify that the information above is true and complete to the best of my knowledge and belief.

SIGNATURE April Hood TITLE Regulatory Specialist DATE 07/11/2017

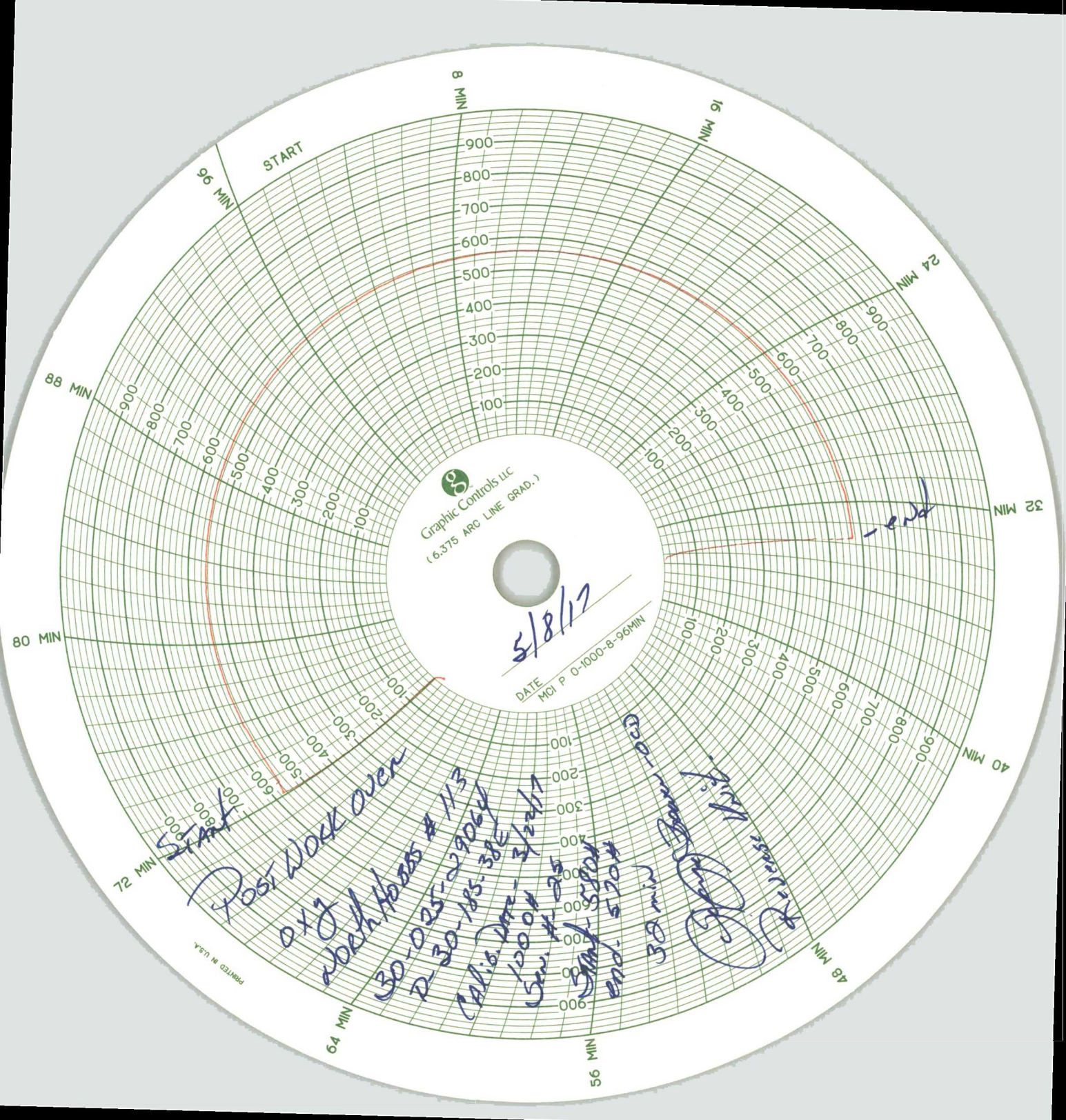
Type or print name April Hood E-mail address: April_Hood@Oxy.com PHONE: 713-366-5771

For State Use Only

APPROVED BY: Malay Brown TITLE AO/II DATE 7/13/2017

Conditions of Approval (if any):

R.B.M.S - CHART - ✓



Graphic Controls LLC
(6.375 ARC LINE GRAD.)

5/8/17

DATE MCI P 0-1000-8-90MM

POST WORK OVER
0x7
200016005 #113
D-30-025-29064
CALIF. DIVE - 3/24/17
1000#
SW. #125
START 5:00PM
END 5:20PM

30 min - 900
30 min - 500
30 min - 100
30 min - 50
30 min - 25
30 min - 10
30 min - 5
30 min - 2.5
30 min - 1.25
30 min - 0.625
30 min - 0.3125
30 min - 0.15625
30 min - 0.078125
30 min - 0.0390625
30 min - 0.01953125
30 min - 0.009765625
30 min - 0.0048828125
30 min - 0.00244140625
30 min - 0.001220703125
30 min - 0.0006103515625
30 min - 0.00030517578125
30 min - 0.000152587890625
30 min - 7.62939453125E-05
30 min - 3.814697265625E-05
30 min - 1.9073486328125E-05
30 min - 9.5367431640625E-06
30 min - 4.76837158203125E-06
30 min - 2.384185791015625E-06
30 min - 1.1920928955078125E-06
30 min - 5.9604644775390625E-07
30 min - 2.98023223876953125E-07
30 min - 1.4901161193847656E-07
30 min - 7.450580596923828E-08
30 min - 3.725290298461914E-08
30 min - 1.862645149230957E-08
30 min - 9.313225746154785E-09
30 min - 4.656612873077392E-09
30 min - 2.328306436538696E-09
30 min - 1.164153218269348E-09
30 min - 5.82076609134674E-10
30 min - 2.91038304567337E-10
30 min - 1.455191522836685E-10
30 min - 7.275957614183425E-11
30 min - 3.637978807091712E-11
30 min - 1.818989403545856E-11
30 min - 9.09494701772928E-12
30 min - 4.54747350886464E-12
30 min - 2.27373675443232E-12
30 min - 1.13686837721616E-12
30 min - 5.6843418860808E-13
30 min - 2.8421709430404E-13
30 min - 1.4210854715202E-13
30 min - 7.105427357601E-14
30 min - 3.5527136788005E-14
30 min - 1.77635683940025E-14
30 min - 8.88178419700125E-15
30 min - 4.440892098500625E-15
30 min - 2.2204460492503125E-15
30 min - 1.1102230246251562E-15
30 min - 5.551115123125781E-16
30 min - 2.7755575615628905E-16
30 min - 1.3877787807814452E-16
30 min - 6.938893903907226E-17
30 min - 3.469446951953613E-17
30 min - 1.7347234759768065E-17
30 min - 8.673617379884032E-18
30 min - 4.336808689942016E-18
30 min - 2.168404344971008E-18
30 min - 1.084202172485504E-18
30 min - 5.42101086242752E-19
30 min - 2.71050543121376E-19
30 min - 1.35525271560688E-19
30 min - 6.7762635780344E-20
30 min - 3.3881317890172E-20
30 min - 1.6940658945086E-20
30 min - 8.470329472543E-21
30 min - 4.2351647362715E-21
30 min - 2.11758236813575E-21
30 min - 1.058791184067875E-21
30 min - 5.293955920339375E-22
30 min - 2.6469779601696875E-22
30 min - 1.3234889800848437E-22
30 min - 6.617444900424219E-23
30 min - 3.3087224502121095E-23
30 min - 1.6543612251060547E-23
30 min - 8.271806125530273E-24
30 min - 4.1359030627651365E-24
30 min - 2.0679515313825682E-24
30 min - 1.0339757656912841E-24
30 min - 5.1698788284564205E-25
30 min - 2.5849394142282102E-25
30 min - 1.2924697071141051E-25
30 min - 6.4623485355705255E-26
30 min - 3.2311742677852627E-26
30 min - 1.6155871338926314E-26
30 min - 8.077935669463157E-27
30 min - 4.0389678347315785E-27
30 min - 2.0194839173657892E-27
30 min - 1.0097419586828946E-27
30 min - 5.048709793414473E-28
30 min - 2.5243548967072365E-28
30 min - 1.2621774483536182E-28
30 min - 6.310887241768091E-29
30 min - 3.1554436208840455E-29
30 min - 1.5777218104420227E-29
30 min - 7.8886090522101135E-30
30 min - 3.9443045261050567E-30
30 min - 1.9721522630525284E-30
30 min - 9.860761315262642E-31
30 min - 4.930380657631321E-31
30 min - 2.4651903288156605E-31
30 min - 1.2325951644078302E-31
30 min - 6.162975822039151E-32
30 min - 3.0814879110195755E-32
30 min - 1.5407439555097877E-32
30 min - 7.7037197775489385E-33
30 min - 3.8518598887744692E-33
30 min - 1.9259299443872346E-33
30 min - 9.629649721936173E-34
30 min - 4.8148248609680865E-34
30 min - 2.4074124304840432E-34
30 min - 1.2037062152420216E-34
30 min - 6.018531076210108E-35
30 min - 3.009265538105054E-35
30 min - 1.504632769052527E-35
30 min - 7.523163845262635E-36
30 min - 3.7615819226313175E-36
30 min - 1.8807909613156587E-36
30 min - 9.403954806578294E-37
30 min - 4.701977403289147E-37
30 min - 2.3509887016445735E-37
30 min - 1.1754943508222867E-37
30 min - 5.8774717541114335E-38
30 min - 2.9387358770557167E-38
30 min - 1.4693679385278584E-38
30 min - 7.346839692639292E-39
30 min - 3.673419846319646E-39
30 min - 1.836709923159823E-39
30 min - 9.183549615799115E-40
30 min - 4.5917748078995575E-40
30 min - 2.2958874039497787E-40
30 min - 1.1479437019748894E-40
30 min - 5.739718509874447E-41
30 min - 2.8698592549372235E-41
30 min - 1.4349296274686117E-41
30 min - 7.1746481373430585E-42
30 min - 3.5873240686715292E-42
30 min - 1.7936620343357646E-42
30 min - 8.968310171678823E-43
30 min - 4.4841550858394115E-43
30 min - 2.2420775429197057E-43
30 min - 1.1210387714598529E-43
30 min - 5.6051938572992645E-44
30 min - 2.8025969286496322E-44
30 min - 1.4012984643248161E-44
30 min - 7.0064923216240805E-45
30 min - 3.5032461608120402E-45
30 min - 1.7516230804060201E-45
30 min - 8.7581154020301005E-46
30 min - 4.3790577010150502E-46
30 min - 2.1895288505075251E-46
30 min - 1.0947644252537625E-46
30 min - 5.4738221262688125E-47
30 min - 2.7369110631344062E-47
30 min - 1.3684555315672031E-47
30 min - 6.8422776578360155E-48
30 min - 3.4211388289180077E-48
30 min - 1.7105694144590039E-48
30 min - 8.552847072295019E-49
30 min - 4.2764235361475095E-49
30 min - 2.1382117680737547E-49
30 min - 1.0691058840368774E-49
30 min - 5.345529420184387E-50
30 min - 2.6727647100921935E-50
30 min - 1.3363823550460967E-50
30 min - 6.6819117752304835E-51
30 min - 3.3409558876152417E-51
30 min - 1.6704779438076209E-51
30 min - 8.352389719038104E-52
30 min - 4.176194859519052E-52
30 min - 2.088097429759526E-52
30 min - 1.044048714879763E-52
30 min - 5.220243574398815E-53
30 min - 2.6101217871994075E-53
30 min - 1.3050608935997037E-53
30 min - 6.525304467998519E-54
30 min - 3.2626522339992595E-54
30 min - 1.6313261169996297E-54
30 min - 8.156630584998148E-55
30 min - 4.078315292499074E-55
30 min - 2.039157646249537E-55
30 min - 1.0195788231247685E-55
30 min - 5.0978941156238425E-56
30 min - 2.5489470578119212E-56
30 min - 1.2744735289059606E-56
30 min - 6.372367644529803E-57
30 min - 3.1861838222649015E-57
30 min - 1.5930919111324507E-57
30 min - 7.9654595556622535E-58
30 min - 3.9827297778311267E-58
30 min - 1.9913648889155634E-58
30 min - 9.956824444577817E-59
30 min - 4.9784122222889085E-59
30 min - 2.4892061111444542E-59
30 min - 1.2446030555722271E-59
30 min - 6.2230152778611355E-60
30 min - 3.1115076389305677E-60
30 min - 1.5557538194652839E-60
30 min - 7.778769097326419E-61
30 min - 3.8893845486632095E-61
30 min - 1.9446922743316047E-61
30 min - 9.7234613716580235E-62
30 min - 4.8617306858290117E-62
30 min - 2.4308653429145059E-62
30 min - 1.2154326714572529E-62
30 min - 6.0771633572862645E-63
30 min - 3.0385816786431322E-63
30 min - 1.5192908393215661E-63
30 min - 7.5964541966078305E-64
30 min - 3.7982270983039152E-64
30 min - 1.8991135491519576E-64
30 min - 9.495567745759788E-65
30 min - 4.747783872879894E-65
30 min - 2.373891936439947E-65
30 min - 1.1869459682199735E-65
30 min - 5.9347298410998675E-66
30 min - 2.9673649205499337E-66
30 min - 1.4836824602749669E-66
30 min - 7.4184123013748345E-67
30 min - 3.7092061506874172E-67
30 min - 1.8546030753437086E-67
30 min - 9.273015376718543E-68
30 min - 4.6365076883592715E-68
30 min - 2.3182538441796357E-68
30 min - 1.1591269220898179E-68
30 min - 5.7956346104490895E-69
30 min - 2.8978173052245447E-69
30 min - 1.4489086526122724E-69
30 min - 7.244543263061362E-70
30 min - 3.622271631530681E-70
30 min - 1.8111358157653405E-70
30 min - 9.055679078826702E-71
30 min - 4.527839539413351E-71
30 min - 2.2639197697066755E-71
30 min - 1.1319598848533377E-71
30 min - 5.6597994242666885E-72
30 min - 2.8298997121333442E-72
30 min - 1.4149498560666721E-72
30 min - 7.0747492803333605E-73
30 min - 3.5373746401666802E-73
30 min - 1.7686873200833401E-73
30 min - 8.8434366004167005E-74
30 min - 4.4217183002083502E-74
30 min - 2.2108591501041751E-74
30 min - 1.1054295750520876E-74
30 min - 5.527147875260438E-75
30 min - 2.763573937630219E-75
30 min - 1.3817869688151095E-75
30 min - 6.9089348440755475E-76
30 min - 3.4544674220377737E-76
30 min - 1.7272337110188869E-76
30 min - 8.636168555094434E-77
30 min - 4.318084277547217E-77
30 min - 2.1590421387736085E-77
30 min - 1.0795210693868042E-77
30 min - 5.397605346934021E-78
30 min - 2.6988026734670105E-78
30 min - 1.3494013367335052E-78
30 min - 6.747006683667526E-79
30 min - 3.373503341833763E-79
30 min - 1.6867516709168815E-79
30 min - 8.4337583545844075E-80
30 min - 4.2168791772922037E-80
30 min - 2.1084395886461019E-80
30 min - 1.0542197943230509E-80
30 min - 5.2710989716152545E-81
30 min - 2.6355494858076272E-81
30 min - 1.3177747429038136E-81
30 min - 6.588873714519068E-82
30 min - 3.294436857259534E-82
30 min - 1.647218428629767E-82
30 min - 8.236092143148835E-83
30 min - 4.1180460715744175E-83
30 min - 2.0590230357872087E-83
30 min - 1.0295115178936044E-83
30 min - 5.147557589468022E-84
30 min - 2.573778794734011E-84
30 min - 1.2868893973670055E-84
30 min - 6.4344469868350275E-85
30 min - 3.2172234934175137E-85
30 min - 1.6086117467087569E-85
30 min - 8.043058733543784E-86
30 min - 4.021529366771892E-86
30 min - 2.010764683385946E-86
30 min - 1.005382341692973E-86
30 min - 5.026911708464865E-87
30 min - 2.5134558542324325E-87
30 min - 1.2567279271162162E-87
30 min - 6.283639635581081E-88
30 min - 3.1418198177905405E-88
30 min - 1.5709099088952702E-88
30 min - 7.854549544476351E-89
30 min - 3.9272747722381755E-89
30 min - 1.9636373861190877E-89
30 min - 9.818186930595439E-90
30 min - 4.9090934652977195E-90
30 min - 2.4545467326488597E-90
30 min - 1.2272733663244299E-90
30 min - 6.136366831622149E-91
30 min - 3.0681834158110745E-91
30 min - 1.5340917079055372E-91
30 min - 7.670458539527686E-92
30 min - 3.835229269763843E-92
30 min - 1.9176146348819215E-92
30 min - 9.588073174409607E-93
30 min - 4.7940365872048035E-93
30 min - 2.3970182936024017E-93
30 min - 1.1985091468012009E-93
30 min - 5.9925457340060045E-94
30 min - 2.9962728670030022E-94
30 min - 1.4981364335015011E-94
30 min - 7.4906821675075055E-95
30 min - 3.7453410837537527E-95
30 min - 1.8726705418768764E-95
30 min - 9.363352709384382E-96
30 min - 4.681676354692191E-96
30 min - 2.3408381773460955E-96
30 min - 1.1704190886730477E-96
30 min - 5.8520954433652385E-97
30 min - 2.9260477216826192E-97
30 min - 1.4630238608413096E-97
30 min - 7.315119304206548E-98
30 min - 3.657559652103274E-98
30 min - 1.828779826051637E-98
30 min - 9.143899130258185E-99
30 min - 4.5719495651290925E-99
30 min - 2.2859747825645462E-99
30 min - 1.1429873912822731E-99
30 min - 5.7149369564113655E-100
30 min - 2.8574684782056827E-100
30 min - 1.4287342391028414E-100
30 min - 7.143671195514207E-101
30 min - 3.5718355977571035E-101
30 min - 1.7859177988785517E-101
30 min - 8.929588994392759E-102
30 min - 4.4647944971963795E-102
30 min - 2.2323972485981897E-102
30 min - 1.1161986242990949E-102
30 min - 5.580993121495474E-103
30 min - 2.790496560747737E-103
30 min - 1.3952482803738685E-103
30 min - 6.9762414018693425E-104
30 min - 3.4881207009346712E-104
30 min - 1.7440603504673356E-104
30 min - 8.720301752336678E-105
30 min - 4.360150876168339E-105
30 min - 2.1800754380841695E-105
30 min - 1.0900377190420847E-105
30 min - 5.4501885952104235E-106
30 min - 2.7250942976052117E-106
30 min - 1.3625471488026059E-106
30 min - 6.812735744013029E-107
30 min - 3.4063678720065145E-107
30 min - 1.7031839360032572E-107
30 min - 8.515919680016286E-108
30 min - 4.257959840008143E-108
30 min - 2.1289799200040715E-108
30 min - 1.0644899600020357E-108
30 min - 5.322449800010179E-109
30 min - 2.6612249000050895E-109
30 min - 1.3306124500025447E-109
30 min - 6.6530622500127235E-110
30 min - 3.3265311250063617E-110
30 min - 1.6632655625031809E-110
30 min - 8.3163278125159045E-111
30 min - 4.1581639062579522E-111
30 min - 2.0790819531289761E-111
30 min - 1.0395409765644881E-111
30 min - 5.1977048828224405E-112
30 min - 2.5988524414112202E-112
30 min - 1.2994262207056101E-112
30 min - 6.4971311035280505E-113
30 min - 3.2485655517640252E-113
30 min - 1.6242827758820126E-113
30 min - 8.121413879410063E-114
30 min - 4.0607069397050315E-114
30 min - 2.0303534698525157E-114
30 min - 1.0151767349262579E-114
30 min - 5.0758836746312895E-115
30 min - 2.5379418373156447E-115
30 min - 1.2689709186578224E-115
30 min - 6.344854593289112E-116
30 min - 3.172427296644556E-116
30 min - 1.586213648322278E-116
30 min - 7.93106824161139E-117
30 min - 3.965534120805695E-117
30 min - 1.9827670604028475E-117
30 min - 9.913835302014237E-118
30 min - 4.9569176510071185E-118
30 min - 2.4784588255035592E-118
30 min - 1.2392294127517796E-118
30 min - 6.196147063758898E-119
30 min - 3.098073531879449E-119
30 min - 1.5490367659397245E-119
30 min - 7.7451838296986225E-120
30 min - 3.8725919148493112E-120
30 min - 1.9362959574246556E-120
30 min - 9.681479787123278E-121
30 min - 4.840739893561639E-121
30 min - 2.4203699467808195E-121
30 min - 1.2101849733904097E-121
30 min - 6.0509248669520485E-122
30 min - 3.0254624334760242E-122
30 min - 1.5127312167380121E-122
30 min - 7.5636560836900605E-123
30 min - 3.7818280418450302E-123
30 min - 1.8909140209225151E-123
30 min - 9.454570104612576E-124
30 min - 4.727285052306288E-124
30 min - 2.363642526153144E-124
30 min - 1.181821263076572E-124
30 min - 5.90910631538286E-125