



APD ID: 10400007695

Submission Date: 11/18/2016

Operator Name: MEWBOURNE OIL COMPANY

Well Name: PRONGHORN 15 B3BO FED COM

Well Number: 1H

Well Type: OIL WELL

Well Work Type: Drill

Section 1 - Geologic Formations

Formation ID	Formation Name	Elevation	True Vertical Depth	Measured Depth	Lithologies	Mineral Resources	Producing Formation
17691	UNKNOWN	3394	27	27		NONE	No
17746	RUSTLER	1704	1690	1690	SALT	USEABLE WATER	No
17718	TOP SALT	489	2905	2905	SALT	NONE	No
17722	BASE OF SALT	-1296	4690	4690	SALT	NONE	No
17719	LAMAR	-1538	4932	4932	LIMESTONE	NATURAL GAS,OIL	No
15332	BELL CANYON	-1673	5067	5067	SANDSTONE	NATURAL GAS,OIL	No
15316	CHERRY CANYON	-2526	5920	5920	SANDSTONE	NATURAL GAS,OIL	No
17713	BRUSHY CANYON	-3757	7151	7151	SANDSTONE	NATURAL GAS,OIL	No
17688	BONE SPRING	-5081	8475	8475	SANDSTONE	NATURAL GAS,OIL	No
15338	BONE SPRING 1ST	-6236	9630	9630	SANDSTONE	NATURAL GAS,OIL	No
17737	BONE SPRING 2ND	-6693	10087	10087	SANDSTONE	NATURAL GAS,OIL	No
17738	BONE SPRING 3RD	-7581	10975	10975	SANDSTONE	NATURAL GAS,OIL	Yes

Section 2 - Blowout Prevention

Pressure Rating (PSI): 3M

Rating Depth: 4860

Equipment: Annular, Pipe Ram, Blind Ram

Requesting Variance? YES

Variance request: A variance is requested for the use of a flexible choke line from the BOP to Choke Manifold.

Testing Procedure: Test Annular to 1500#. Test Rams to 3000#.

Choke Diagram Attachment:

Operator Name: MEWBOURNE OIL COMPANY

Well Name: PRONGHORN 15 B3BO FED COM

Well Number: 1H

Pronghorn 15 B3BO Fed Com 1H_3M BOPE Choke Diagram_11-18-2016.pdf

BOP Diagram Attachment:

Pronghorn 15 B3BO Fed Com 1H_3M BOPE Schematic_11-18-2016.pdf

Pressure Rating (PSI): 3M

Rating Depth: 1750

Equipment: Annular

Requesting Variance? NO

Variance request:

Testing Procedure: Test to 1500#

Choke Diagram Attachment:

Pronghorn 15 B3BO Fed Com 1H_3M Surface BOPE Choke Diagram_11-18-2016.pdf

BOP Diagram Attachment:

Pronghorn 15 B3BO Fed Com 1H_3M Surface BOPE Schematic_11-18-2016.pdf

Pressure Rating (PSI): 5M

Rating Depth: 15870

Equipment: Annular, Pipe Ram, Blind Ram

Requesting Variance? YES

Variance request: A variance is requested for the use of a flexible choke line from the BOP to Choke Manifold.

Testing Procedure: Test Annular to 2500# Test Rams to 5000#

Choke Diagram Attachment:

Pronghorn 15 B3BO Fed Com 1H_Flex Line Specs_11-18-2016.pdf

BOP Diagram Attachment:

Pronghorn 15 B3BO Fed Com 1H_5M BOPE Schematic_11-18-2016.pdf

Operator Name: MEWBOURNE OIL COMPANY

Well Name: PRONGHORN 15 B3BO FED COM

Well Number: 1H

Section 3 - Casing

Casing ID	String Type	Hole Size	Csg Size	Condition	Standard	Tapered String	Top Set MD	Bottom Set MD	Top Set TVD	Bottom Set TVD	Top Set MSL	Bottom Set MSL	Calculated casing length MD	Grade	Weight	Joint Type	Collapse SF	Burst SF	Joint SF Type	Joint SF	Body SF Type	Body SF
1	SURFACE	17.5	13.375	NEW	API	Y	0	1715	0	1715	3394	1679	1715	H-40	48	STC	1.13	2.53	DRY	3.83	DRY	8.56
2	INTERMEDIATE	12.25	9.625	NEW	API	Y	0	4857	0	4857	3394	-1463	4857	J-55	36	LTC	1.13	1.96	DRY	2.51	DRY	4.54
3	PRODUCTION	8.75	7.0	NEW	API	N	0	11557	0	11284	3394	-7890	11557	P-110	26	LTC	1.33	1.7	DRY	2.17	DRY	2.76
4	LINER	6.125	4.5	NEW	API	N	7098	11910	7098	7677	-3704	-4283	4812	P-110	13.5	LTC	2.67	3.11	DRY	5.2	DRY	6.5

Casing Attachments

Casing ID: 1 **String Type:** SURFACE

Inspection Document:

Spec Document:

Taperd String Spec:

Pronghorn 15 B3BO_Surface Tapered String Diagram_11-18-2016.pdf

Casing Design Assumptions and Worksheet(s):

Pronghorn 15 B3BO Fed Com 1H_drilling program_11-18-2016.pdf

Operator Name: MEWBOURNE OIL COMPANY

Well Name: PRONGHORN 15 B3BO FED COM

Well Number: 1H

Casing Attachments

Casing ID: 2 **String Type:** INTERMEDIATE

Inspection Document:

Spec Document:

Taperd String Spec:

Pronghorn 15 B3BO_Intermediate Tapered String Diagram_11-18-2016.pdf

Casing Design Assumptions and Worksheet(s):

Pronghorn 15 B3BO Fed Com 1H_drilling program_11-18-2016.pdf

Casing ID: 3 **String Type:** PRODUCTION

Inspection Document:

Spec Document:

Taperd String Spec:

Casing Design Assumptions and Worksheet(s):

Pronghorn 15 B3BO Fed Com 1H_drilling program_11-18-2016.pdf

Casing ID: 4 **String Type:** LINER

Inspection Document:

Spec Document:

Taperd String Spec:

Casing Design Assumptions and Worksheet(s):

Pronghorn 15 B3BO Fed Com 1H_drilling program_11-18-2016.pdf

Section 4 - Cement

Operator Name: MEWBOURNE OIL COMPANY

Well Name: PRONGHORN 15 B3BO FED COM

Well Number: 1H

String Type	Lead/Tail	Stage Tool Depth	Top MD	Bottom MD	Quantity(sx)	Yield	Density	Cu Ft	Excess%	Cement type	Additives
SURFACE	Lead		0	1329	1000	2.12	12.5	2120	100	Class C	Salt, Gel, Extender, LCM
SURFACE	Tail		1329	1715	200	1.34	14.8	268	100	Class C	Retarder
INTERMEDIATE	Lead		0	4000	800	2.12	12.5	424	25	Class C	Salt, Gel, Extender, LCM
INTERMEDIATE	Tail		400	4857	200	1.34	14.8	268	25	Class C	Retarder
PRODUCTION	Lead		4657	8420	400	2.12	12.5	848		Class C	Gel, Retarder, Defoamer, Extender
PRODUCTION	Tail		8420	11557	400	1.18	15.6	472	25	Class H	Retarder, Fluid Loss, Defoamer
LINER	Lead		10806	15865	205	2.97	11.2	609		Class C	Salt, Gel, Fluid Loss, Retarder, Dispersant,

Section 5 - Circulating Medium

Mud System Type: Closed

Will an air or gas system be Used? NO

Description of the equipment for the circulating system in accordance with Onshore Order #2:

Diagram of the equipment for the circulating system in accordance with Onshore Order #2:

Describe what will be on location to control well or mitigate other conditions: Lost circulation material Sweeps Mud scavengers in surface hole

Describe the mud monitoring system utilized: Visual Monitoring

Circulating Medium Table

Top Depth	Bottom Depth	Mud Type	Min Weight (lbs/gal)	Max Weight (lbs/gal)	Density (lbs/cu ft)	Gel Strength (lbs/100 sqft)	PH	Viscosity (CP)	Salinity (ppm)	Filtration (cc)	Additional Characteristics
0	1715	SPUD MUD	8.6	8.8							

Operator Name: MEWBOURNE OIL COMPANY

Well Name: PRONGHORN 15 B3BO FED COM

Well Number: 1H

Top Depth	Bottom Depth	Mud Type	Min Weight (lbs/gal)	Max Weight (lbs/gal)	Density (lbs/cu ft)	Gel Strength (lbs/100 sqft)	PH	Viscosity (CP)	Salinity (ppm)	Filtration (cc)	Additional Characteristics
1715	4860	SALT SATURATED	10	10							
4860	1080 6	WATER-BASED MUD	8.6	9.5							
1080 6	1128 4	WATER-BASED MUD	8.6	9.5							

Section 6 - Test, Logging, Coring

List of production tests including testing procedures, equipment and safety measures:

Will run GR/CNL from KOP (10,806') to surface

List of open and cased hole logs run in the well:

CNL,DS,GR,MWD,MUDLOG

Coring operation description for the well:

None

Section 7 - Pressure

Anticipated Bottom Hole Pressure: 4890

Anticipated Surface Pressure: 2409.06

Anticipated Bottom Hole Temperature(F): 140

Anticipated abnormal pressures, temperatures, or potential geologic hazards? NO

Describe:

Contingency Plans geohazards description:

Contingency Plans geohazards attachment:

Hydrogen Sulfide drilling operations plan required? YES

Hydrogen sulfide drilling operations plan:

Pronghorn 15 B3BO Fed Com 1H_H2S Plan_11-18-2016.pdf

Operator Name: MEWBOURNE OIL COMPANY

Well Name: PRONGHORN 15 B3BO FED COM

Well Number: 1H

Section 8 - Other Information

Proposed horizontal/directional/multi-lateral plan submission:

Pronghorn 15 B3BO 1H_Plot_11-18-2016.pdf

Pronghorn 15 B3BO Fed Com 1H_Plan_11-18-2016.pdf

Other proposed operations facets description:

Other proposed operations facets attachment:

Other Variance attachment:

3M BOPE & Closed Loop Equipment Schematic

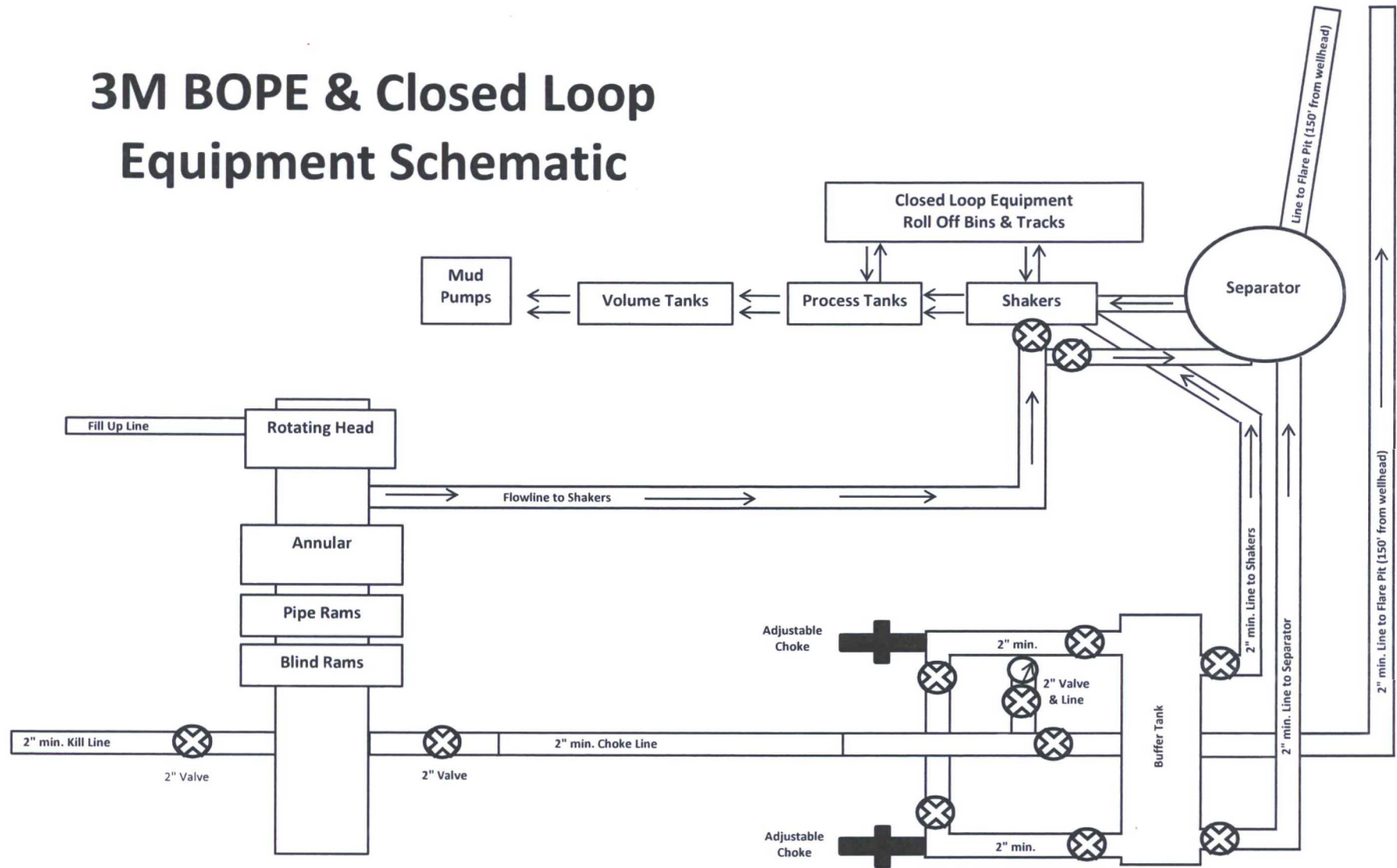


Exhibit "2"

3M BOPE & Closed Loop Equipment Schematic

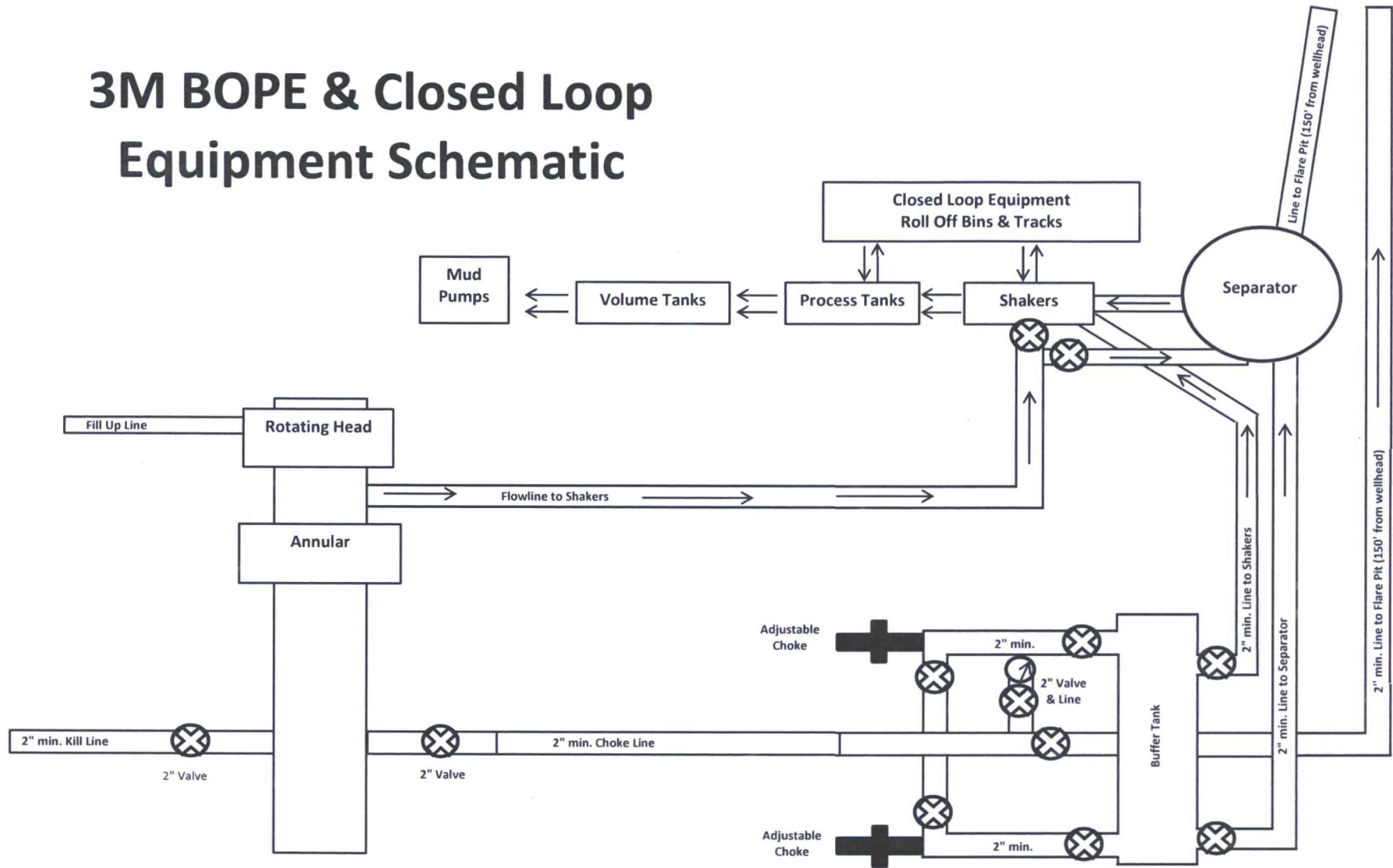


Exhibit "2"



GATES E & S NORTH AMERICA, INC.
134 44TH STREET
CORPUS CHRISTI, TEXAS 78405

PHONE: 361-887-9807
FAX: 361-887-0812
EMAIL: Tim.Cantu@gates.com
WEB: www.gates.com

10K CEMENTING ASSEMBLY PRESSURE TEST CERTIFICATE

Customer :	AUSTIN DISTRIBUTING	Test Date:	4/30/2015
Customer Ref. :	4060578	Hose Serial No.:	D-043015-7
Invoice No. :	500506	Created By:	JUSTIN CROPPER

Product Description: 10K3.548.0CK4.1/1610KFLGE/E LE

End Fitting 1 :	4 1/16 10K FLG	End Fitting 2 :	4 1/16 10K FLG
Gates Part No. :	4773-6290	Assembly Code :	L36554102914D-043015-7
Working Pressure :	10,000 PSI	Test Pressure :	15,000 PSI

Gates E & S North America, Inc. certifies that the following hose assembly has been tested to the Gates Oilfield Roughneck Agreement/Specification requirements and passed the 15 minute hydrostatic test per API Spec 7K/Q1, Fifth Edition, June 2010, Test pressure 9.6.7 and per Table 9 to 15,000 psi in accordance with this product number. Hose burst pressure 9.6.7.2 exceeds the minimum of 2.5 times the working pressure per Table 9.

Quality Manager :
Date :
Signature :

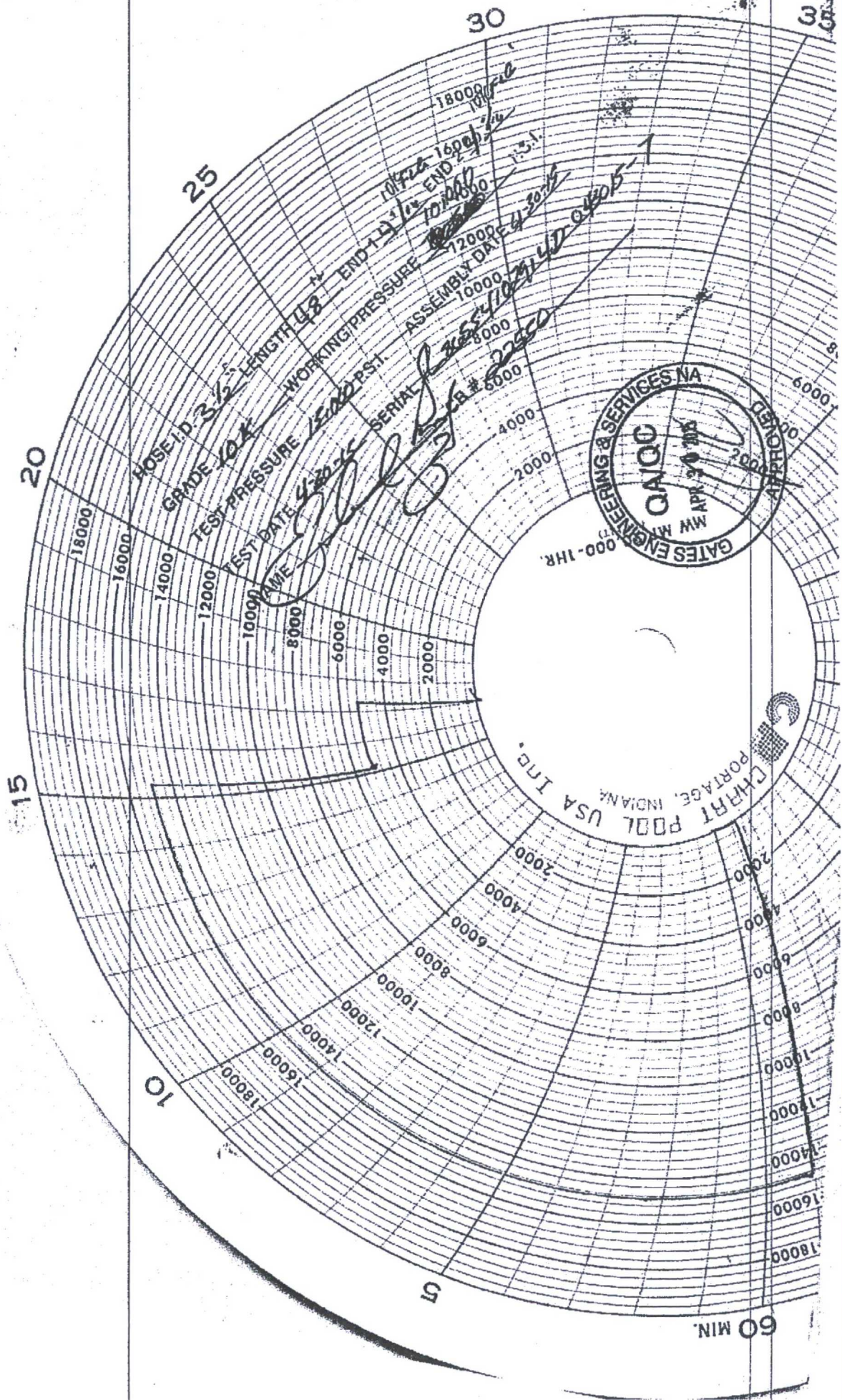
QUALITY
4/30/2015

Production:
Date :
Signature :

PRODUCTION
4/30/2015

Form PTC - 01 Rev.0/2



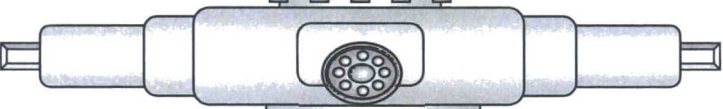


Hydril "GK"
13 5/8" 3M

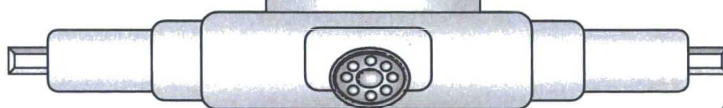


Hydril "GK"

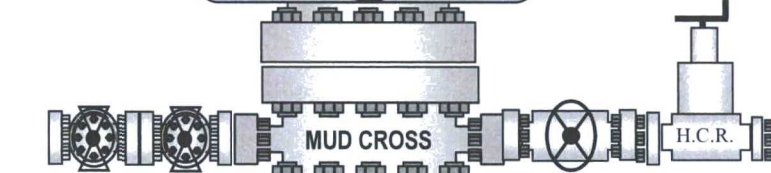
Cameron Type U
13 5/8" 3M



4 1/2"x 5 7/8" VBR



BLIND RAMS



MUD CROSS

H.C.R.

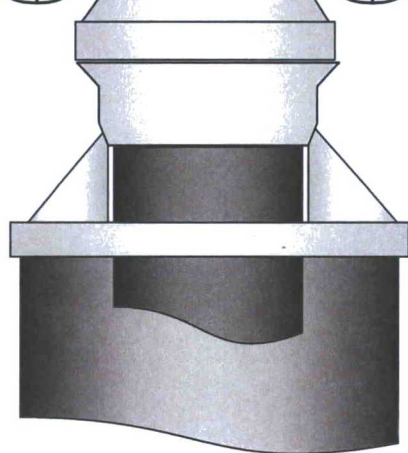


4 1/2"x 5 7/8" VBR

13 5/8" 3M

13 5/8" 3M

13 5/8" 3M



Mewbourne Oil Company
BOP Schematic for

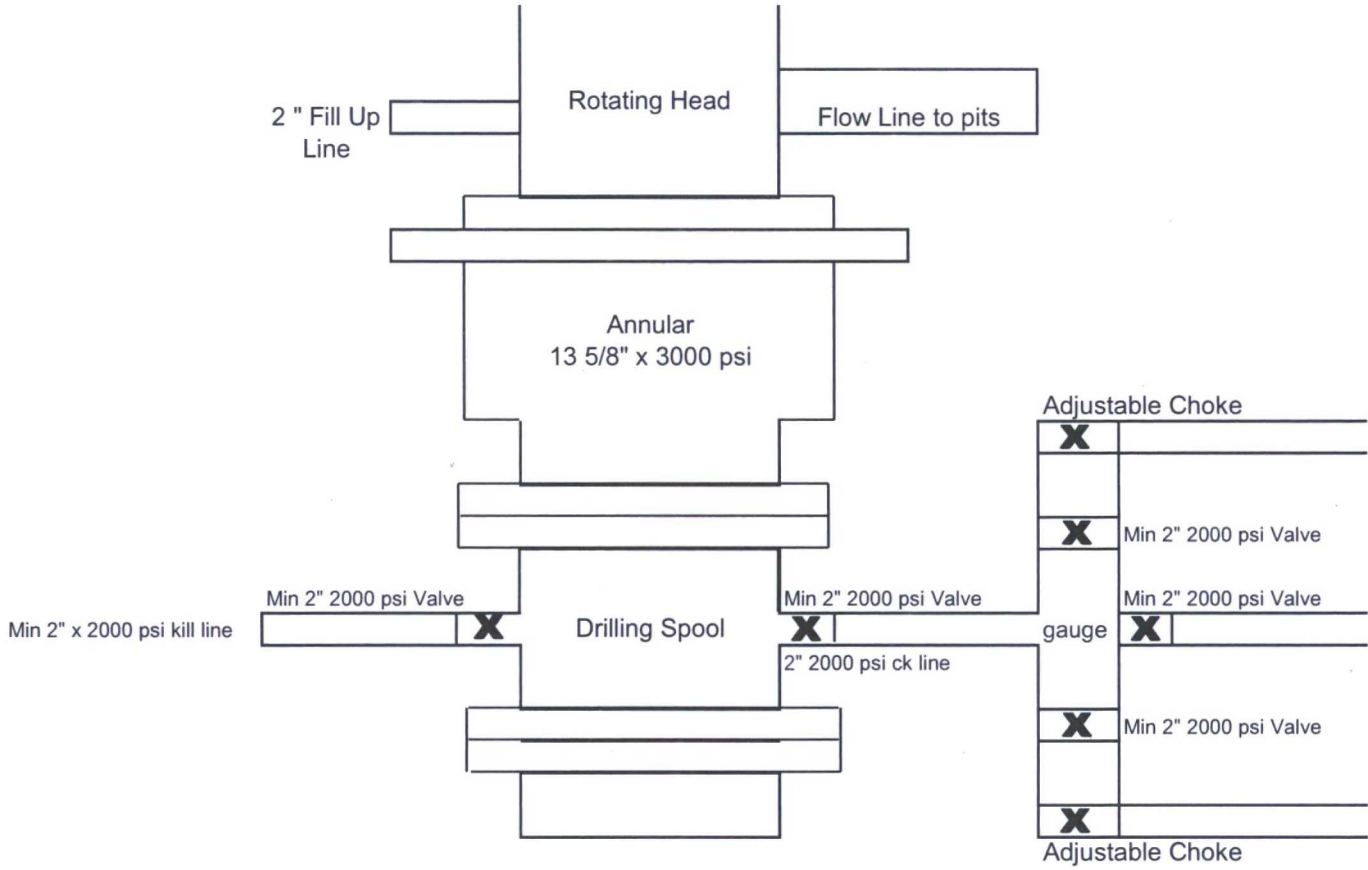
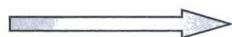


Exhibit #2

Hydril "GK"
13 5/8" 5M



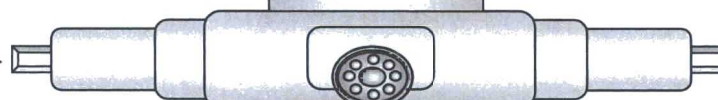
Hydril "GK"

Cameron Type U
13 5/8" 5M



4 1/2"x 5 7/8" VBR

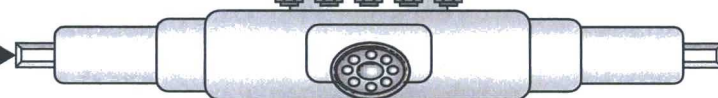
BLIND RAMS



MUD CROSS



H.C.R.

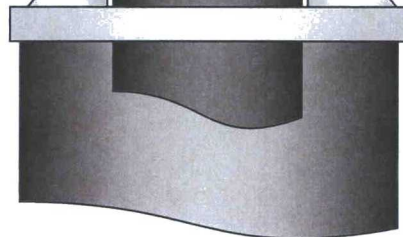


4 1/2"x 5 7/8" VBR

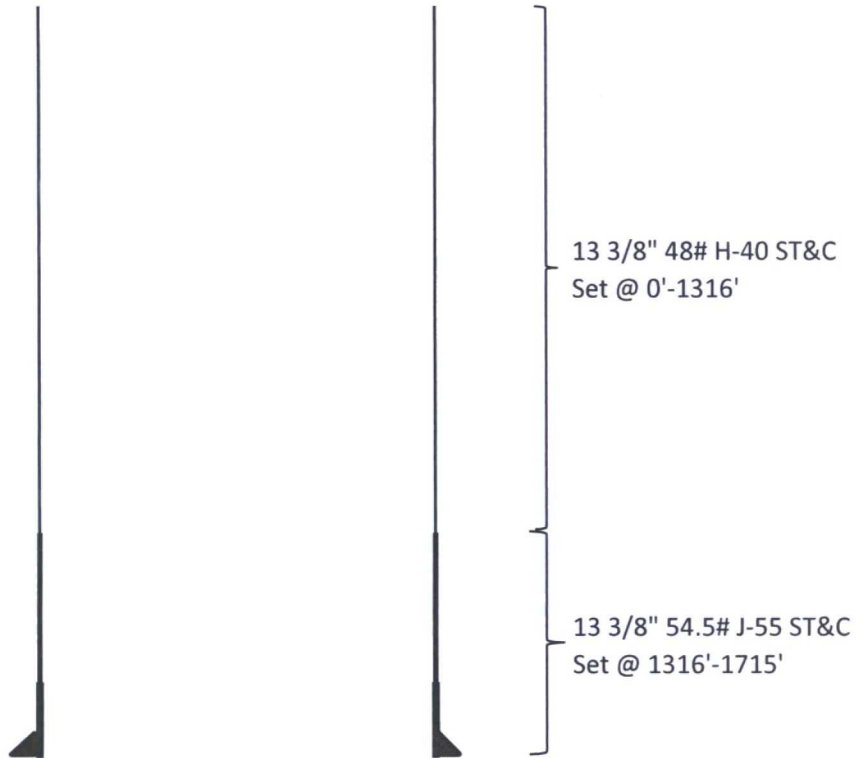
13 5/8" 5M

13 5/8" 5M

13 5/8" 5M

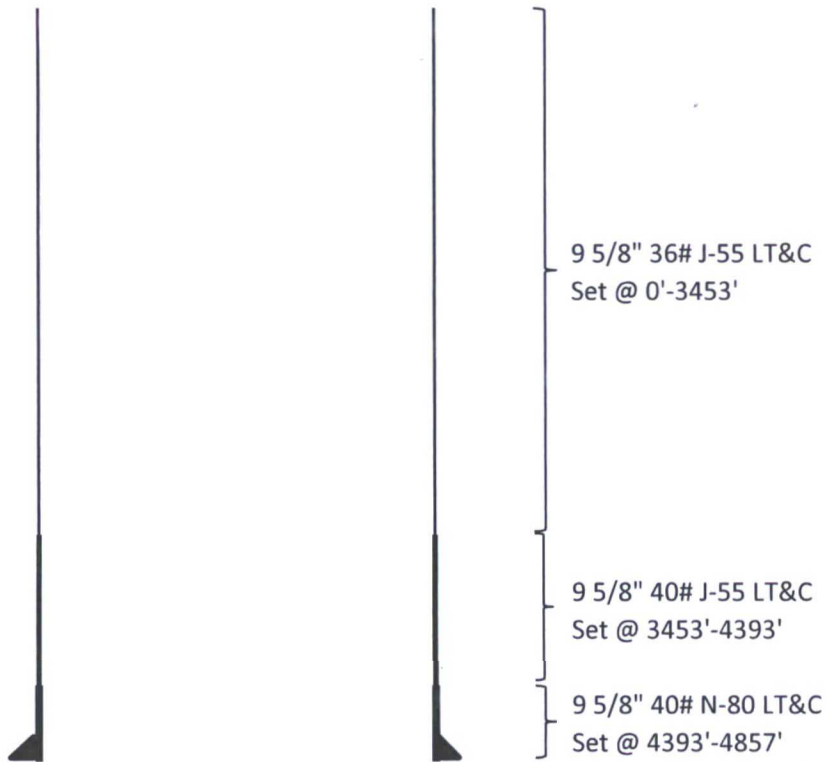


Pronghorn 15 B3BO Fed Com #1H
Surface Casing



Casing	SF Collapse	SF Burst	SF Jt Tension	SF Body Tension
48# H-40	1.13	2.53	3.79	8.56
54.5# J-55	1.27	3.06	23.65	39.25

Pronghorn 15 B3BO Fed Com #1H
Intermediate Casing



Casing	SF Collapse	SF Burst	SF Jt Tension	SF Body Tension
36# J-55	1.13	1.96	2.51	4.54
40# J-55	1.13	1.73	9.26	16.75
40# N-80	1.22	2.28	39.72	49.37