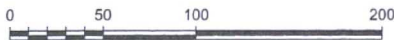
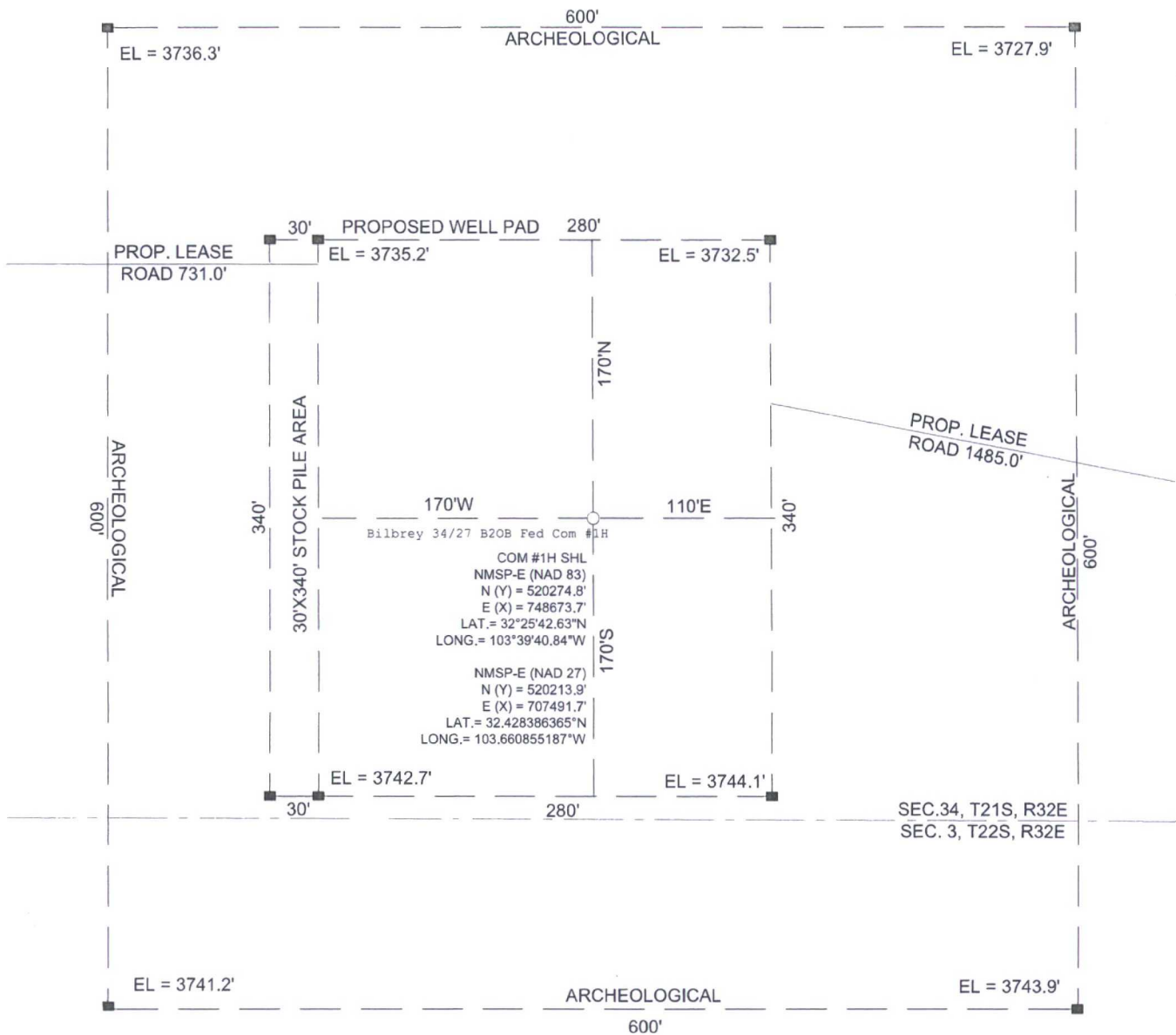


SITE LOCATION



GRAPHIC SCALE 1" = 100'

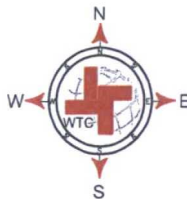
SECTION 34, T 21S, R 32E, N.M.P.M.

COUNTY: LEA STATE: NM

DESCRIPTION: 185' FSL & 2240' FEL

OPERATOR: MEWBOURNE OIL COMPANY

WELL NAME: BILBREY 34 B2OB FEDERAL COM #1H



DRIVING DIRECTIONS:

FROM THE INTERSECTION OF HWY 62-180 AND CAMPBELL ROAD, GO SOUTH ON CAMPBELL ROAD 5.8 MILES TURN LEFT ON LEASE ROAD, GO WEST 1 MILE AND TURN RIGHT, GO 1 MILE AND TURN RIGHT, GO 1.1 MILE AND TURN LEFT, GO 1 MILE AND TURN RIGHT, GO 1.6 MILES AND LATHE FOR PROPOSED ROAD IS ON THE WEST CORNER OF EXISTING PAD.



WTC, INC.
405 S.W. 1st. STREET
ANDREWS, TEXAS 79714
(432) 523-2181



MEWBOURNE OIL COMPANY

JOB No.: WTC49690

AERIAL MAP



0 1000 2000 4000

GRAPHIC SCALE 1" = 2000'

SECTION 34, T 21S, R 32E, N.M.P.M.

COUNTY: LEA STATE: NM

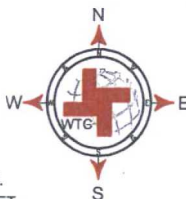
DESCRIPTION: 185' FSL & 2240' FEL

OPERATOR: MEWBOURNE OIL COMPANY

WELL NAME: BILBREY 34 B2OB FEDERAL
COM #1H



W T C, INC.
405 S.W. 1st. STREET
ANDREWS, TEXAS 79714
(432) 523-2181



DRIVING DIRECTIONS:

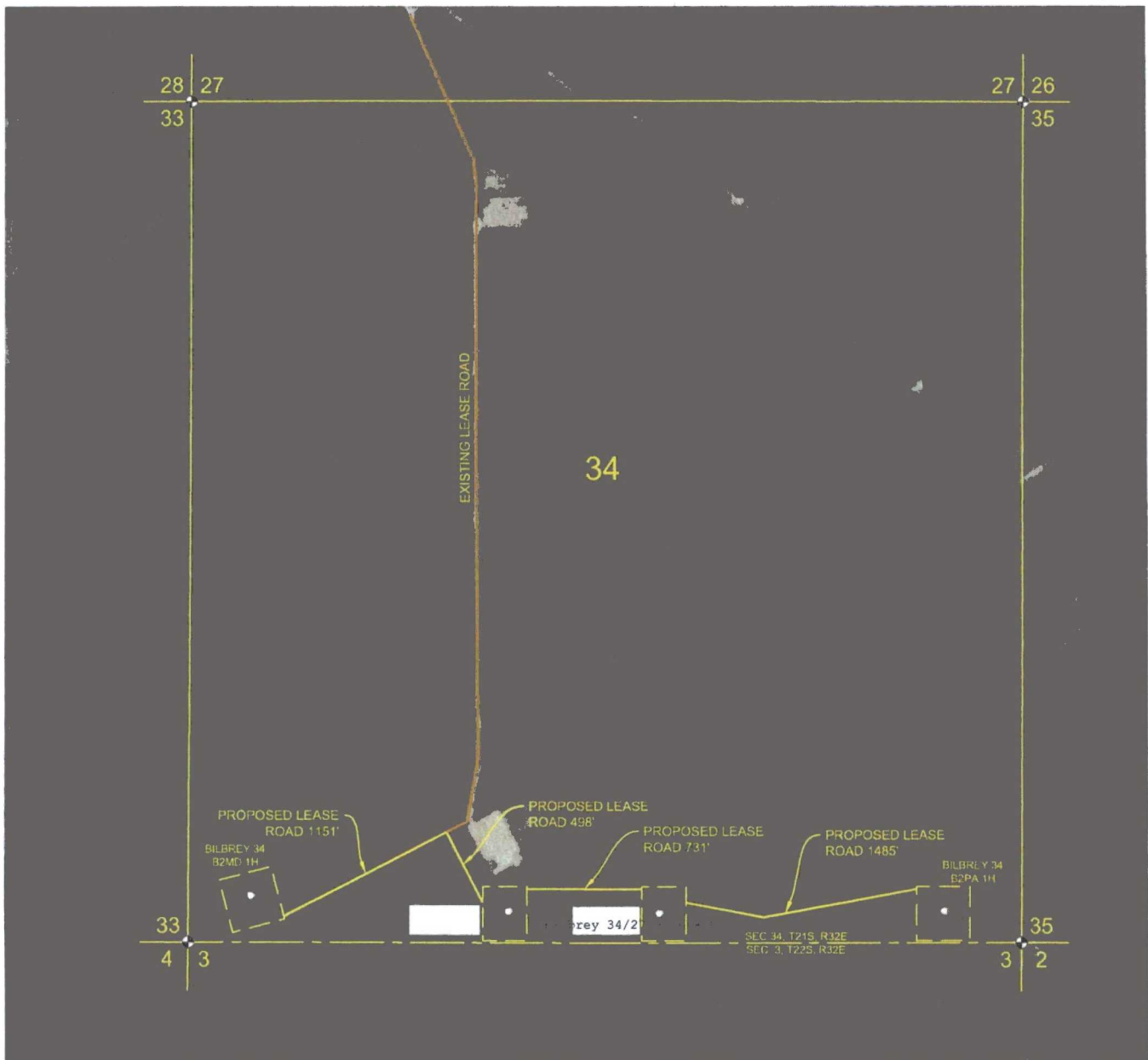
FROM THE INTERSECTION OF HWY 62-180 AND CAMPBELL ROAD, GO SOUTH ON CAMPBELL ROAD 5.8 MILES TURN LEFT ON LEASE ROAD, GO WEST 1 MILE AND TURN RIGHT, GO 1 MILE AND TURN RIGHT, GO 1.1 MILE AND TURN LEFT, GO 1 MILE AND TURN RIGHT, GO 1.6 MILES AND LATHE FOR PROPOSED ROAD IS ON THE WEST CORNER OF EXISTING PAD.



MEWBOURNE OIL COMPANY

JOB No.: WTC49690

[illegible]



0 50 100 200

GRAPHIC SCALE 1" = 100'

SECTION 34, T 21S, R 32E, N.M.P.M.

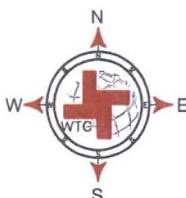
COUNTY: LEA STATE: NM

OPERATOR: MEWBOURNE OIL COMPANY

WELL NAME: BILBREY WELLS



WTC, INC.
405 S.W. 1st STREET
ANDREWS, TEXAS 79714
(432) 523-2181



ACCESS ROAD

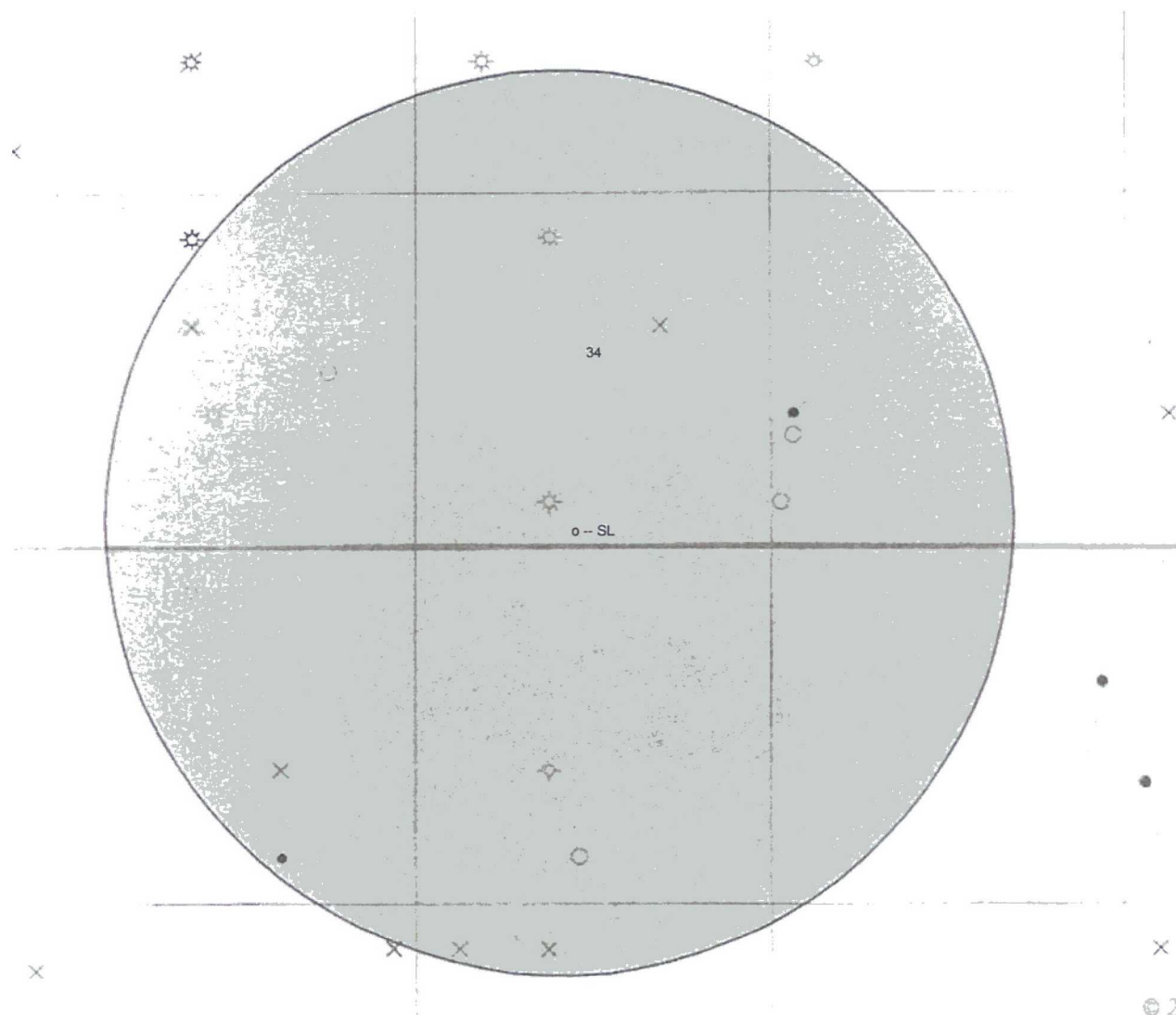
DRIVING DIRECTIONS:

FROM THE INTERSECTION OF HWY 62-180 AND CAMPBELL ROAD, GO SOUTH ON CAMPBELL ROAD 5.8 MILES TURN LEFT ON LEASE ROAD, GO WEST 1 MILE AND TURN RIGHT, GO 1 MILE AND TURN RIGHT, GO 1.1 MILE AND TURN LEFT, GO 1 MILE AND TURN RIGHT, GO 1.6 MILES AND LATHE FOR PROPOSED ROAD IS ON THE WEST CORNER OF EXISTING PAD.



MEWBOURNE OIL COMPANY

JOB No.: WTC49690



- o Drilling (Well Start)
- x Abandoned Location (Permit)
- ☆ Gas Well
- Oil Well
- ☆ Oil and Gas Well
- Other (Observation, etc)
- ☆ Injection Well
- o Suspended
- ☆ Plugged Gas Well
- ☆ Plugged Oil Well
- ☆ Plugged Oil and Gas
- ◇ Dry Hole (No Shows)
- ◇ Dry Hole w/Gas Show
- ◇ Dry Hole w/Oil Show
- ☆ Dry Hole w/Oil and Gas Show

