

District I  
1625 N. French Dr., Hobbs, NM 88240  
Phone: (575) 393-6161 Fax: (575) 393-0720  
District II  
811 S. First St., Artesia, NM 88210  
Phone: (575) 748-1283 Fax: (575) 748-9720  
District III  
1000 Rio Brazos Road, Aztec, NM 87410  
Phone: (505) 334-6178 Fax: (505) 334-6170  
District IV  
1220 S. St. Francis Dr., Sante Fe, NM 87505  
Phone: (505) 476-3460 Fax: (505) 476-3462

State of New Mexico  
Energy, Minerals & Natural Resources  
Department  
OIL CONSERVATION DIVISION  
1220 South St. Francis Dr.  
Sante Fe, NM 87505

**HOBBS OCD**  
AUG 23 2017  
**RECEIVED**

FORM C-102

Revised August 1, 2011

Submit one copy to appropriate

District Office

AMENDED REPORT

**WELL LOCATION AND ACREAGE DEDICATION PLAT**

<sup>1</sup> API Number 30-025- <b>43933</b>	<sup>2</sup> Pool Code 96658	<sup>3</sup> Pool Name Hardin Tank; Wolfcamp
<sup>4</sup> Property Code	<sup>5</sup> Property Name RUBY 2 FED COM	<sup>6</sup> Well Number #705H
<sup>7</sup> GRID No. 7377	<sup>8</sup> Operator Name EOG RESOURCES, INC.	<sup>9</sup> Elevation 3295'

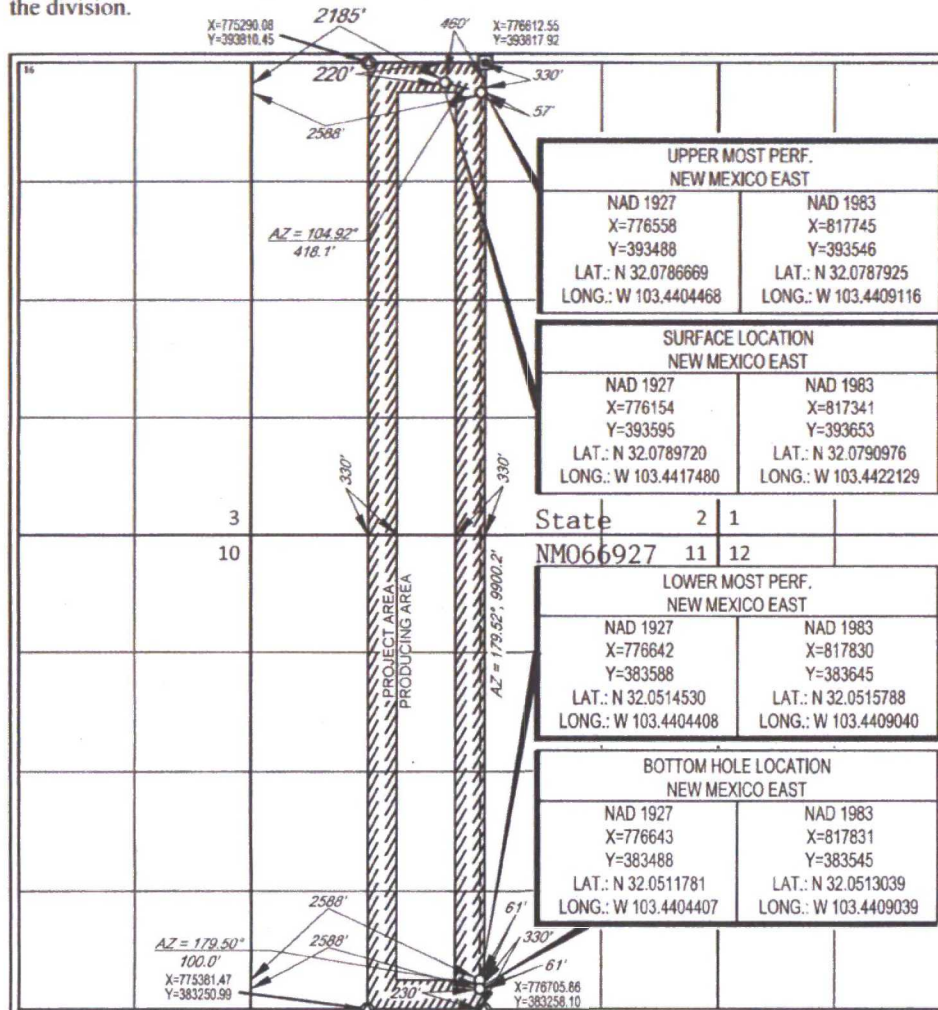
<sup>10</sup>Surface Location

UL or lot no.	Section	Township	Range	Lot Idn	Feet from the	North/South line	Feet from the	East/West line	County
C	2	26-S	34-E	-	220'	NORTH	2185'	WEST	LEA

UL or lot no.	Section	Township	Range	Lot Idn	Feet from the	North/South line	Feet from the	East/West line	County
N	11	26-S	34-E	-	230'	SOUTH	2588'	WEST	LEA

<sup>11</sup> Dedicated Acres 320.00	<sup>12</sup> Joint or Infill	<sup>13</sup> Consolidation Code	<sup>14</sup> Order No.
---	-------------------------------	----------------------------------	-------------------------

No allowable will be assigned to this completion until all interests have been consolidated or a non-standard unit has been approved by the division.



UPPER MOST PERF. NEW MEXICO EAST	
NAD 1927 X=776558 Y=393488 LAT.: N 32.0786669 LONG.: W 103.4404468	NAD 1983 X=817745 Y=393546 LAT.: N 32.0787925 LONG.: W 103.4409116

SURFACE LOCATION NEW MEXICO EAST	
NAD 1927 X=776154 Y=393595 LAT.: N 32.0789720 LONG.: W 103.4417480	NAD 1983 X=817341 Y=393653 LAT.: N 32.0790976 LONG.: W 103.4422129

State	2	1
NM066927	11	12

LOWER MOST PERF. NEW MEXICO EAST	
NAD 1927 X=776642 Y=383588 LAT.: N 32.0514530 LONG.: W 103.4404408	NAD 1983 X=817830 Y=383645 LAT.: N 32.0515788 LONG.: W 103.4409040

BOTTOM HOLE LOCATION NEW MEXICO EAST	
NAD 1927 X=776643 Y=383488 LAT.: N 32.0511781 LONG.: W 103.4404407	NAD 1983 X=817831 Y=383545 LAT.: N 32.0513039 LONG.: W 103.4409039

<sup>17</sup>OPERATOR CERTIFICATION  
I hereby certify that the information contained herein is true and complete to the best of my knowledge and belief, and that this organization either owns a working interest or unleased mineral interest in the land including the proposed bottom hole location or has a right to drill this well at this location pursuant to a contract with an owner of such a mineral or working interest, or to a voluntary pooling agreement or a compulsory pooling order heretofore entered by the division.

*Stan Wagner* 1/24/17  
Signature Date  
Stan Wagner  
Printed Name  
E-mail Address

<sup>18</sup>SURVEYOR CERTIFICATION  
I hereby certify that the well location shown on this plat was plotted from field notes of actual surveys made by me or under my supervision, and that the same is true to the best of my belief.

12/09/2016  
Date of Survey  
Signature and Title of Professional Surveyor  
M. C. BROWN  
NEW MEXICO  
18329  
PROFESSIONAL SURVEYOR  
Certificate Number