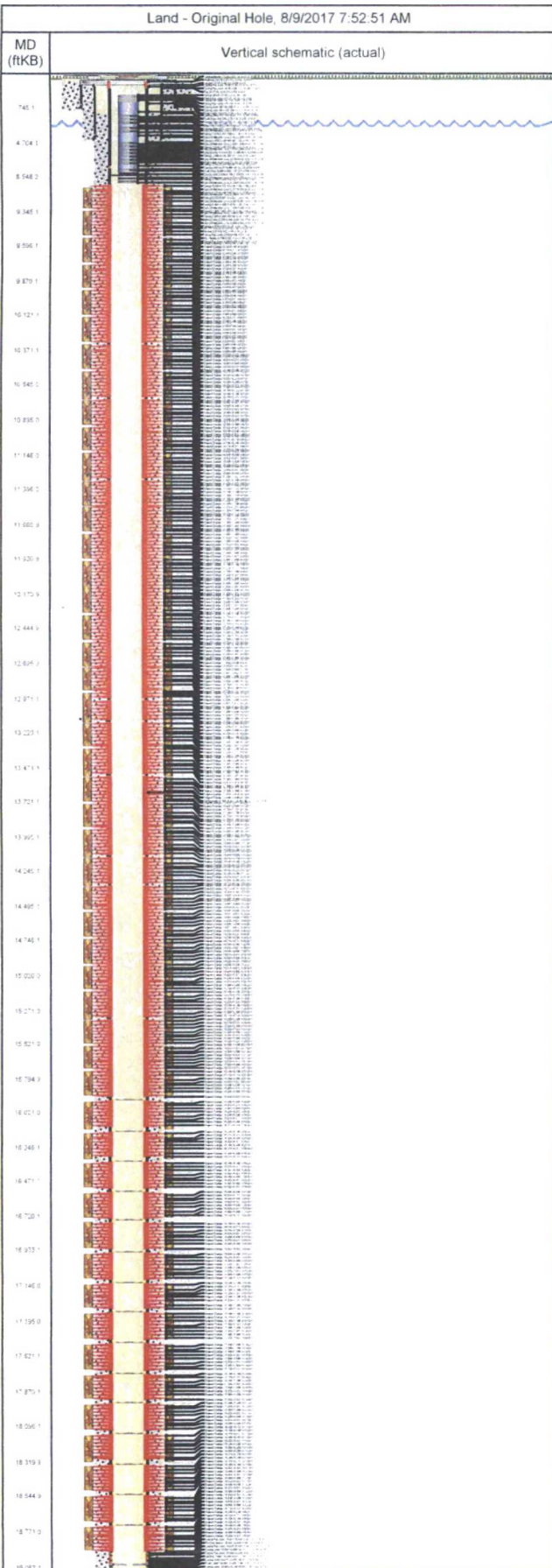




Wellbore Schematic

Well Name SALADO DRAW WE 23 FED P25 002H	Lease NMNM118723	Field Name JENNINGS	Business Unit Mid-Continent
---	---------------------	------------------------	--------------------------------



Job Details						
Job Category		Start Date		Rig/Unit End Date		
Completion		5/2/2017				
Completion		5/6/2017				
Completion		7/12/2017				
Casing Strings						
Csg Des	OD (in)	Wt/Len (lb/ft)	Grade	Top Thread	Set Depth (MD) (ftKB)	
Surface	13 3/8	54.50	J-55	ST&C	745	
Intermediate Casing 1	9 5/8	40.00	J-55	LT&C	4,500	
Production Casing	5 1/2	20.00	HCP-110	TXP-BTC-S	19,147	
Tubing Strings						
Tubing set at 8,556.2ftKB on 7/13/2017 12:00						
Tubing Description		Run Date		String Length (ft)	Set Depth (MD) (ftKB)	
Tubing		7/13/2017		8,491.07	8,556.2	
Item Des	Jts	OD (in)	Wt (lb/ft)	Grade	Len (ft)	Btm (ftKB)
Tubing Hanger					0.50	65.7
Tubing		2 7/8	6.50	N-80	31.42	97.1
Tubing Pup Joint		2 7/8			10.10	107.2
Tubing Pup Joint		2 7/8			8.05	115.2
Tubing Pup Joint		2 7/8			4.10	119.3
Tubing		2 7/8	6.50	N-80	1,752.23	1,871.6
Gas Lift Mandrel - Live		2 7/8			4.10	1,875.7
Tubing		2 7/8	6.50	N-80	596.02	2,471.7
Gas Lift Mandrel - Live		2 7/8			4.10	2,475.8
Tubing		2 7/8	6.50	N-80	563.69	3,039.5
Gas Lift Mandrel - Live		2 7/8			4.10	3,043.6
Tubing		2 7/8	6.50	N-80	532.40	3,576.0
Gas Lift Mandrel - Live		2 7/8			4.10	3,580.1
Tubing		2 7/8	6.50	N-80	557.87	4,137.9
Gas Lift Mandrel - Live		2 7/8			4.10	4,142.0
Tubing		2 7/8	6.50	N-80	562.00	4,704.0
Gas Lift Mandrel - Live		2 7/8			4.10	4,708.1
Tubing		2 7/8	6.50	N-80	530.74	5,238.9
Gas Lift Mandrel - Live		2 7/8			4.10	5,243.0
Tubing		2 7/8	6.50	N-80	533.79	5,776.8
Gas Lift Mandrel - Live		2 7/8			4.10	5,780.9
Tubing		2 7/8	6.50	N-80	568.10	6,349.0
Gas Lift Mandrel - Live		2 7/8			4.10	6,353.1
Tubing		2 7/8	6.50	N-80	533.62	6,886.7
Gas Lift Mandrel - Live		2 7/8			4.10	6,890.8
Tubing		2 7/8	6.50	N-80	534.79	7,425.6
Gas Lift Mandrel - Live		2 7/8			4.10	7,429.7
Tubing		2 7/8	6.50	N-80	563.31	7,993.0
Gas Lift Mandrel - Live		2 7/8			4.10	7,997.1
Tubing		2 7/8	6.50	N-80	500.48	8,497.6
Gas Lift Mandrel - Live		2 7/8			4.10	8,501.7
Tubing		2 7/8	6.50	N-80	31.25	8,532.9
On-Off Tool		2 7/8			1.50	8,534.4
Packer		2 7/8			7.74	8,542.2
Tubing Pup Joint		2 7/8			6.23	8,548.4
XN - Nipple		2 7/8			1.17	8,549.6
Tubing Pup Joint		2 7/8			6.23	8,555.8
Shear Coupling		2 7/8			0.44	8,556.2
Perforations						
Date	Top (ftKB)	Btm (ftKB)	Shot Dens (shots/ft)	Entered Shot Total	Linked Zone	
6/10/2017	9,144.0	9,145.0	6.0	6	Avalon, Original Hole	
6/10/2017	9,170.0	9,171.0	5.0	5	Avalon, Original Hole	
6/10/2017	9,195.0	9,196.0	5.0	5	Avalon, Original Hole	
6/10/2017	9,220.0	9,221.0	4.0	4	Avalon, Original Hole	



Wellbore Schematic

Well Name
SALADO DRAW WE 23 FED P25 002H

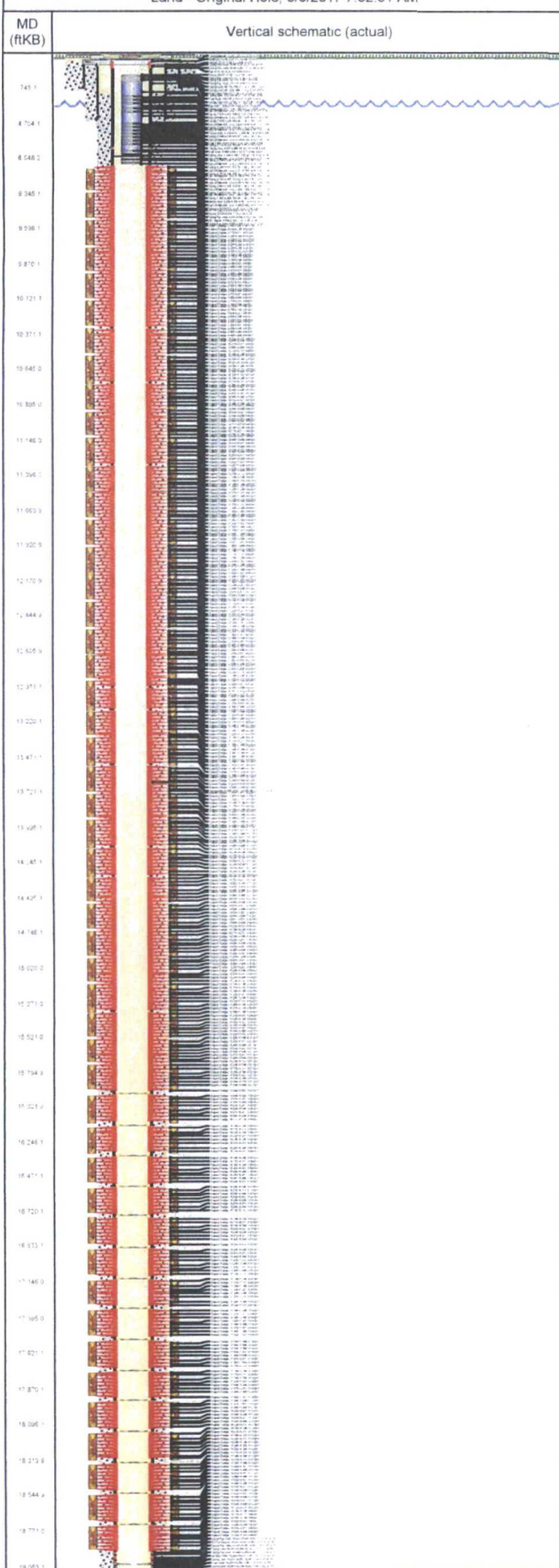
Lease
NMNM118723

Field Name
JENNINGS

Business Unit
Mid-Continent

Land - Original Hole, 8/9/2017 7:52:51 AM

Perforations



Date	Top (ftKB)	Btm (ftKB)	Shot Dens (shots/ft)	Entered Shot Total	Linked Zone
6/10/2017	9,245.0	9,246.0	4.0	4	Avalon, Original Hole
6/10/2017	9,265.0	9,266.0	4.0	4	Avalon, Original Hole
6/10/2017	9,295.0	9,296.0	4.0	4	Avalon, Original Hole
6/10/2017	9,320.0	9,321.0	3.0	3	Avalon, Original Hole
6/9/2017	9,345.0	9,346.0	6.0	6	Avalon, Original Hole
6/9/2017	9,370.0	9,371.0	5.0	5	Avalon, Original Hole
6/9/2017	9,395.0	9,396.0	5.0	5	Avalon, Original Hole
6/9/2017	9,420.0	9,421.0	4.0	4	Avalon, Original Hole
6/9/2017	9,445.0	9,446.0	4.0	4	Avalon, Original Hole
6/9/2017	9,470.0	9,471.0	4.0	4	Avalon, Original Hole
6/9/2017	9,495.0	9,496.0	4.0	4	Avalon, Original Hole
6/9/2017	9,520.0	9,521.0	3.0	3	Avalon, Original Hole
6/9/2017	9,545.0	9,546.0	6.0	6	Avalon, Original Hole
6/9/2017	9,570.0	9,571.0	5.0	5	Avalon, Original Hole
6/9/2017	9,595.0	9,596.0	5.0	5	Avalon, Original Hole
6/9/2017	9,620.0	9,621.0	4.0	4	Avalon, Original Hole
6/9/2017	9,645.0	9,646.0	4.0	4	Avalon, Original Hole
6/9/2017	9,670.0	9,671.0	4.0	4	Avalon, Original Hole
6/9/2017	9,695.0	9,696.0	4.0	4	Avalon, Original Hole
6/9/2017	9,720.0	9,721.0	3.0	3	Avalon, Original Hole
6/8/2017	9,745.0	9,746.0	6.0	6	Avalon, Original Hole
6/8/2017	9,770.0	9,771.0	5.0	5	Avalon, Original Hole
6/8/2017	9,795.0	9,796.0	5.0	5	Avalon, Original Hole
6/8/2017	9,820.0	9,821.0	4.0	4	Avalon, Original Hole
6/8/2017	9,845.0	9,846.0	4.0	4	Avalon, Original Hole
6/8/2017	9,870.0	9,871.0	4.0	4	Avalon, Original Hole
6/8/2017	9,895.0	9,896.0	4.0	4	Avalon, Original Hole
6/8/2017	9,920.0	9,921.0	3.0	3	Avalon, Original Hole
6/8/2017	9,945.0	9,946.0	6.0	6	Avalon, Original Hole
6/8/2017	9,965.0	9,966.0	5.0	5	Avalon, Original Hole
6/8/2017	9,995.0	9,996.0	5.0	5	Avalon, Original Hole
6/8/2017	10,020.0	10,021.0	4.0	4	Avalon, Original Hole
6/8/2017	10,045.0	10,046.0	4.0	4	Avalon, Original Hole
6/8/2017	10,070.0	10,071.0	4.0	4	Avalon, Original Hole
6/8/2017	10,095.0	10,096.0	4.0	4	Avalon, Original Hole
6/8/2017	10,120.0	10,121.0	3.0	3	Avalon, Original Hole
6/7/2017	10,145.0	10,146.0	6.0	6	Avalon, Original Hole
6/7/2017	10,170.0	10,171.0	5.0	5	Avalon, Original Hole
6/7/2017	10,195.0	10,196.0	5.0	5	Avalon, Original Hole
6/7/2017	10,223.0	10,224.0	4.0	4	Avalon, Original Hole
6/7/2017	10,245.0	10,246.0	4.0	4	Avalon, Original Hole
6/7/2017	10,270.0	10,271.0	4.0	4	Avalon, Original Hole
6/7/2017	10,295.0	10,296.0	4.0	4	Avalon, Original Hole
6/7/2017	10,320.0	10,321.0	3.0	3	Avalon, Original Hole
6/7/2017	10,348.0	10,349.0	6.0	6	Avalon, Original Hole
6/7/2017	10,370.0	10,371.0	5.0	5	Avalon, Original Hole
6/7/2017	10,395.0	10,396.0	5.0	5	Avalon, Original Hole
6/7/2017	10,420.0	10,421.0	4.0	4	Avalon, Original Hole
6/7/2017	10,445.0	10,446.0	4.0	4	Avalon, Original Hole
6/7/2017	10,470.0	10,471.0	4.0	4	Avalon, Original Hole
6/7/2017	10,495.0	10,496.0	4.0	4	Avalon, Original Hole
6/7/2017	10,520.0	10,521.0	3.0	3	Avalon, Original Hole
6/6/2017	10,545.0	10,546.0	6.0	6	Avalon, Original Hole
6/6/2017	10,570.0	10,571.0	5.0	5	Avalon, Original Hole
6/6/2017	10,595.0	10,596.0	5.0	5	Avalon, Original Hole
6/6/2017	10,620.0	10,621.0	4.0	4	Avalon, Original Hole
6/6/2017	10,645.0	10,646.0	4.0	4	Avalon, Original Hole
6/6/2017	10,670.0	10,671.0	4.0	4	Avalon, Original Hole



Wellbore Schematic

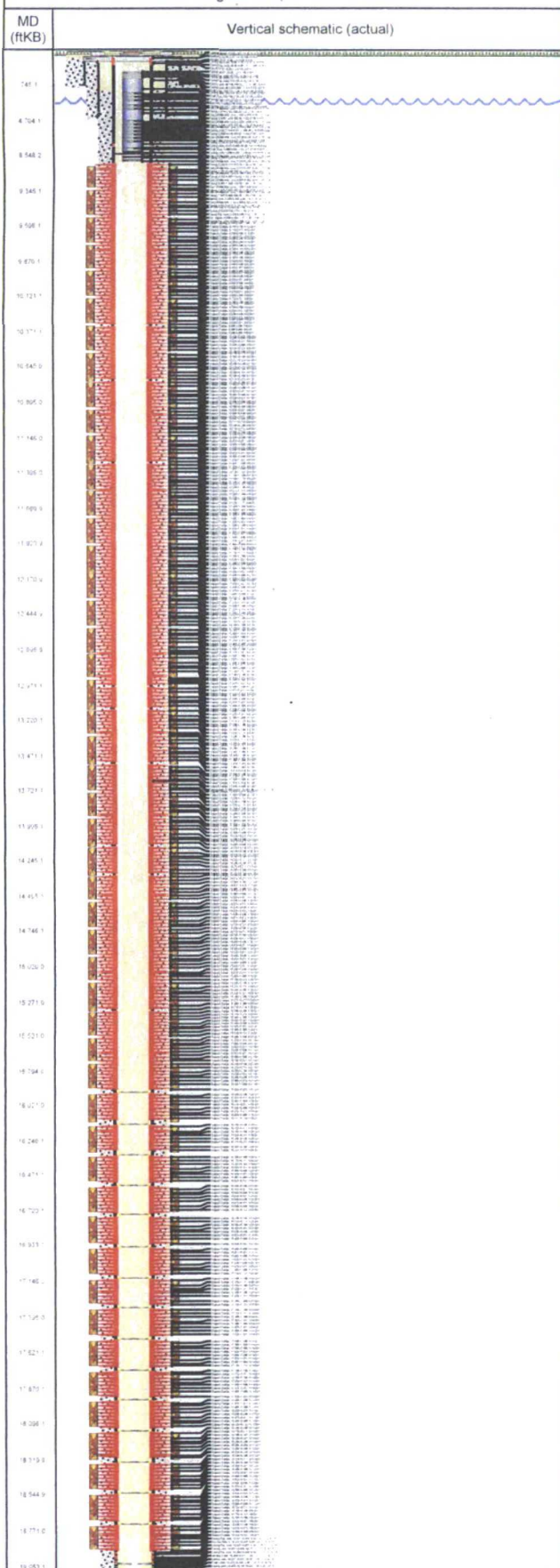
Well Name
SALADO DRAW WE 23 FED P25 002H

Lease
NMNM118723

Field Name
JENNINGS

Business Unit
Mid-Continent

Land - Original Hole, 8/9/2017 7:52:52 AM



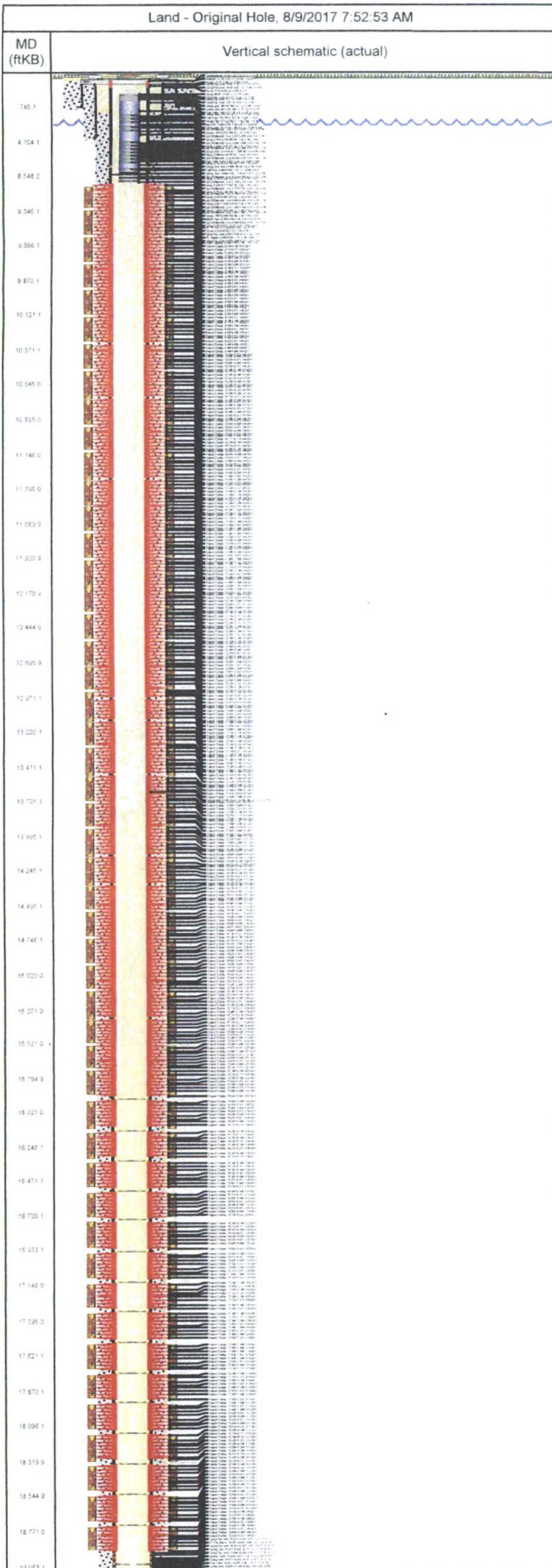
Perforations

Date	Top (ftKB)	Btm (ftKB)	Shot Dens (shots/ft)	Entered Shot Total	Linked Zone
6/6/2017	10,695.0	10,696.0	4.0	4	Avalon, Original Hole
6/6/2017	10,717.0	10,718.0	3.0	3	Avalon, Original Hole
6/6/2017	10,745.0	10,746.0	6.0	6	Avalon, Original Hole
6/6/2017	10,770.0	10,771.0	5.0	5	Avalon, Original Hole
6/6/2017	10,795.0	10,796.0	5.0	5	Avalon, Original Hole
6/6/2017	10,820.0	10,821.0	4.0	4	Avalon, Original Hole
6/6/2017	10,845.0	10,846.0	4.0	4	Avalon, Original Hole
6/6/2017	10,870.0	10,871.0	4.0	4	Avalon, Original Hole
6/6/2017	10,895.0	10,896.0	4.0	4	Avalon, Original Hole
6/6/2017	10,920.0	10,921.0	3.0	3	Avalon, Original Hole
6/5/2017	10,945.0	10,946.0	6.0	6	Avalon, Original Hole
6/5/2017	10,970.0	10,971.0	5.0	5	Avalon, Original Hole
6/5/2017	10,995.0	10,996.0	5.0	5	Avalon, Original Hole
6/5/2017	11,020.0	11,021.0	4.0	4	Avalon, Original Hole
6/5/2017	11,047.0	11,048.0	4.0	4	Avalon, Original Hole
6/5/2017	11,070.0	11,071.0	4.0	4	Avalon, Original Hole
6/5/2017	11,095.0	11,096.0	4.0	4	Avalon, Original Hole
6/5/2017	11,120.0	11,121.0	3.0	3	Avalon, Original Hole
6/5/2017	11,145.0	11,146.0	0.0	0	Avalon, Original Hole
6/5/2017	11,169.0	11,170.0	0.0	0	Avalon, Original Hole
6/5/2017	11,195.0	11,196.0	0.0	0	Avalon, Original Hole
6/5/2017	11,220.0	11,221.0	0.0	0	Avalon, Original Hole
6/5/2017	11,245.0	11,246.0	0.0	0	Avalon, Original Hole
6/5/2017	11,270.0	11,271.0	0.0	0	Avalon, Original Hole
6/5/2017	11,295.0	11,296.0	0.0	0	Avalon, Original Hole
6/5/2017	11,316.0	11,317.0	0.0	0	Avalon, Original Hole
6/4/2017	11,345.0	11,346.0	6.0	6	Avalon, Original Hole
6/4/2017	11,370.0	11,371.0	5.0	5	Avalon, Original Hole
6/4/2017	11,395.0	11,396.0	5.0	5	Avalon, Original Hole
6/4/2017	11,420.0	11,421.0	4.0	4	Avalon, Original Hole
6/4/2017	11,445.0	11,446.0	4.0	4	Avalon, Original Hole
6/4/2017	11,470.0	11,471.0	4.0	4	Avalon, Original Hole
6/4/2017	11,493.0	11,494.0	4.0	4	Avalon, Original Hole
6/4/2017	11,520.0	11,521.0	3.0	3	Avalon, Original Hole
6/4/2017	11,545.0	11,546.0	6.0	6	Avalon, Original Hole
6/4/2017	11,570.0	11,571.0	5.0	5	Avalon, Original Hole
6/4/2017	11,595.0	11,596.0	5.0	5	Avalon, Original Hole
6/4/2017	11,620.0	11,621.0	4.0	4	Avalon, Original Hole
6/4/2017	11,645.0	11,646.0	4.0	4	Avalon, Original Hole
6/4/2017	11,670.0	11,671.0	4.0	4	Avalon, Original Hole
6/4/2017	11,695.0	11,696.0	4.0	4	Avalon, Original Hole
6/4/2017	11,720.0	11,721.0	3.0	3	Avalon, Original Hole
6/4/2017	11,745.0	11,746.0	6.0	6	Avalon, Original Hole
6/4/2017	11,770.0	11,771.0	5.0	5	Avalon, Original Hole
6/4/2017	11,795.0	11,796.0	5.0	5	Avalon, Original Hole
6/4/2017	11,820.0	11,821.0	4.0	4	Avalon, Original Hole
6/4/2017	11,845.0	11,846.0	4.0	4	Avalon, Original Hole
6/4/2017	11,870.0	11,871.0	4.0	4	Avalon, Original Hole
6/4/2017	11,895.0	11,896.0	4.0	4	Avalon, Original Hole
6/4/2017	11,920.0	11,921.0	3.0	3	Avalon, Original Hole
6/3/2017	11,945.0	11,946.0	6.0	6	Avalon, Original Hole
6/3/2017	11,970.0	11,971.0	5.0	5	Avalon, Original Hole
6/3/2017	11,995.0	11,996.0	5.0	5	Avalon, Original Hole
6/3/2017	12,020.0	12,021.0	4.0	4	Avalon, Original Hole
6/3/2017	12,045.0	12,046.0	4.0	4	Avalon, Original Hole
6/3/2017	12,070.0	12,071.0	4.0	4	Avalon, Original Hole
6/3/2017	12,095.0	12,096.0	4.0	4	Avalon, Original Hole
6/3/2017	12,117.0	12,118.0	3.0	3	Avalon, Original Hole



Wellbore Schematic

Well Name SALADO DRAW WE 23 FED P25 002H	Lease NMNM118723	Field Name JENNINGS	Business Unit Mid-Continent
---	---------------------	------------------------	--------------------------------



Perforations					
Date	Top (ftKB)	Btm (ftKB)	Shot Dens (shots/ft)	Entered Shot Total	Linked Zone
6/3/2017	12,145.0	12,146.0	6.0	6	Avalon, Original Hole
6/3/2017	12,170.0	12,171.0	5.0	5	Avalon, Original Hole
6/3/2017	12,195.0	12,196.0	5.0	5	Avalon, Original Hole
6/3/2017	12,220.0	12,221.0	4.0	4	Avalon, Original Hole
6/3/2017	12,243.0	12,244.0	4.0	4	Avalon, Original Hole
6/3/2017	12,270.0	12,271.0	4.0	4	Avalon, Original Hole
6/3/2017	12,295.0	12,296.0	4.0	4	Avalon, Original Hole
6/3/2017	12,320.0	12,321.0	3.0	3	Avalon, Original Hole
6/3/2017	12,345.0	12,346.0	6.0	6	Avalon, Original Hole
6/3/2017	12,374.0	12,375.0	5.0	5	Avalon, Original Hole
6/3/2017	12,395.0	12,396.0	5.0	5	Avalon, Original Hole
6/3/2017	12,420.0	12,421.0	4.0	4	Avalon, Original Hole
6/3/2017	12,445.0	12,446.0	4.0	4	Avalon, Original Hole
6/3/2017	12,470.0	12,471.0	4.0	4	Avalon, Original Hole
6/3/2017	12,495.0	12,496.0	4.0	4	Avalon, Original Hole
6/3/2017	12,520.0	12,521.0	3.0	3	Avalon, Original Hole
6/2/2017	12,545.0	12,546.0	6.0	6	Avalon, Original Hole
6/2/2017	12,570.0	12,571.0	5.0	5	Avalon, Original Hole
6/2/2017	12,595.0	12,596.0	5.0	5	Avalon, Original Hole
6/2/2017	12,621.0	12,622.0	4.0	4	Avalon, Original Hole
6/2/2017	12,645.0	12,646.0	4.0	4	Avalon, Original Hole
6/2/2017	12,670.0	12,671.0	4.0	4	Avalon, Original Hole
6/2/2017	12,695.0	12,696.0	4.0	4	Avalon, Original Hole
6/2/2017	12,720.0	12,721.0	3.0	3	Avalon, Original Hole
6/2/2017	12,745.0	12,746.0	6.0	6	Avalon, Original Hole
6/2/2017	12,770.0	12,771.0	5.0	5	Avalon, Original Hole
6/2/2017	12,795.0	12,796.0	5.0	5	Avalon, Original Hole
6/2/2017	12,820.0	12,821.0	4.0	4	Avalon, Original Hole
6/2/2017	12,845.0	12,846.0	4.0	4	Avalon, Original Hole
6/2/2017	12,871.0	12,872.0	4.0	4	Avalon, Original Hole
6/2/2017	12,895.0	12,896.0	4.0	4	Avalon, Original Hole
6/2/2017	12,920.0	12,921.0	3.0	3	Avalon, Original Hole
6/2/2017	12,945.0	12,946.0	6.0	6	Avalon, Original Hole
6/2/2017	12,970.0	12,971.0	5.0	5	Avalon, Original Hole
6/2/2017	12,998.0	12,999.0	5.0	5	Avalon, Original Hole
6/2/2017	13,020.0	13,021.0	4.0	4	Avalon, Original Hole
6/2/2017	13,045.0	13,046.0	4.0	4	Avalon, Original Hole
6/2/2017	13,070.0	13,071.0	4.0	4	Avalon, Original Hole
6/2/2017	13,095.0	13,096.0	4.0	4	Avalon, Original Hole
6/2/2017	13,116.0	13,117.0	3.0	3	Avalon, Original Hole
6/2/2017	13,145.0	13,146.0	6.0	6	Avalon, Original Hole
6/2/2017	13,170.0	13,171.0	5.0	5	Avalon, Original Hole
6/2/2017	13,195.0	13,196.0	5.0	5	Avalon, Original Hole
6/2/2017	13,220.0	13,221.0	4.0	4	Avalon, Original Hole
6/2/2017	13,245.0	13,246.0	4.0	4	Avalon, Original Hole
6/2/2017	13,270.0	13,271.0	4.0	4	Avalon, Original Hole
6/2/2017	13,295.0	13,296.0	4.0	4	Avalon, Original Hole
6/2/2017	13,320.0	13,321.0	3.0	3	Avalon, Original Hole
6/1/2017	13,345.0	13,346.0	6.0	6	Avalon, Original Hole
6/1/2017	13,367.0	13,368.0	5.0	5	Avalon, Original Hole
6/1/2017	13,395.0	13,396.0	5.0	5	Avalon, Original Hole
6/1/2017	13,420.0	13,421.0	4.0	4	Avalon, Original Hole
6/1/2017	13,445.0	13,446.0	4.0	4	Avalon, Original Hole
6/1/2017	13,470.0	13,471.0	4.0	4	Avalon, Original Hole
6/1/2017	13,493.0	13,494.0	4.0	4	Avalon, Original Hole
6/1/2017	13,518.0	13,519.0	3.0	3	Avalon, Original Hole
6/1/2017	13,545.0	13,546.0	6.0	6	Avalon, Original Hole
6/1/2017	13,570.0	13,571.0	5.0	5	Avalon, Original Hole



Wellbore Schematic

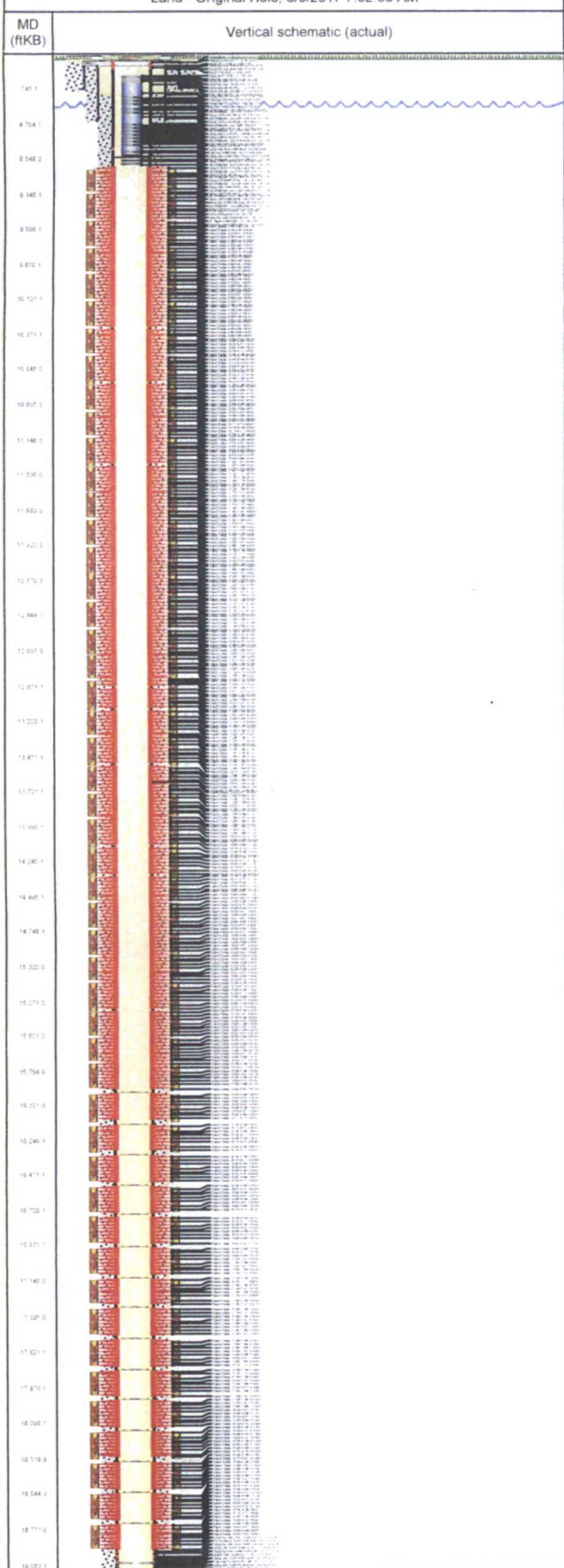
Well Name
SALADO DRAW WE 23 FED P25 002H

Lease
NMNM118723

Field Name
JENNINGS

Business Unit
Mid-Continent

Land - Original Hole, 8/9/2017 7:52:53 AM



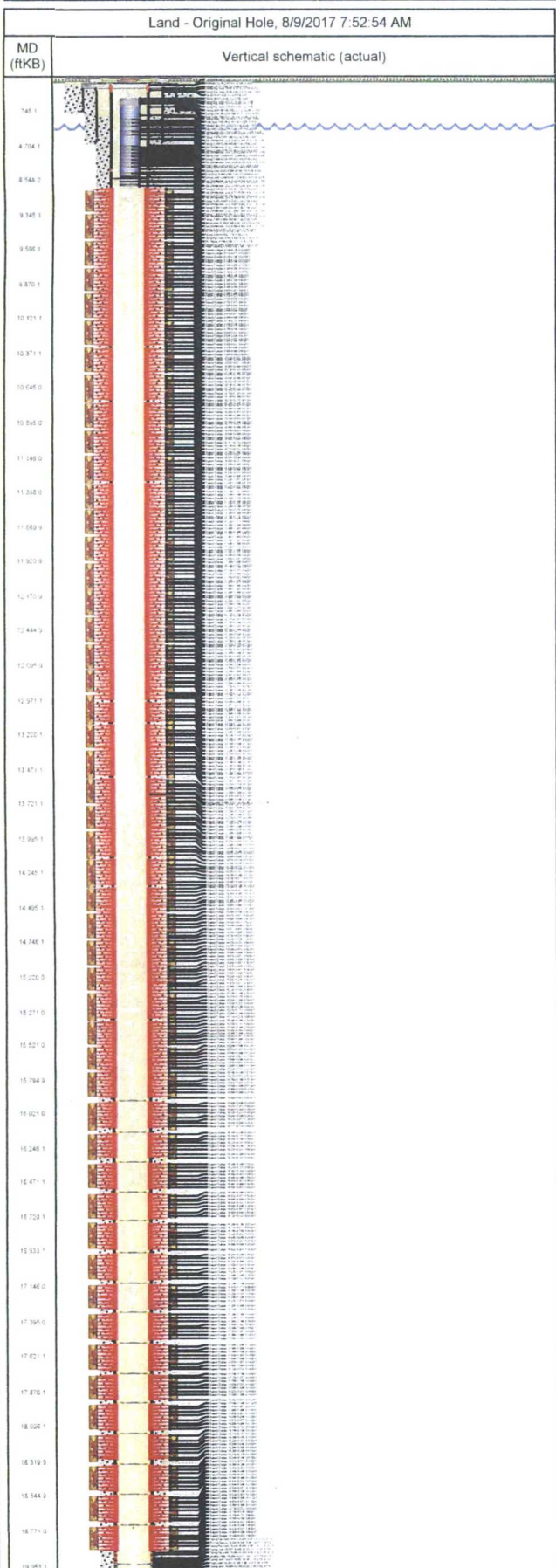
Perforations

Date	Top (ftKB)	Btm (ftKB)	Shot Dens (shots/ft)	Entered Shot Total	Linked Zone
6/1/2017	13,595.0	13,596.0	5.0	5	Avalon, Original Hole
6/1/2017	13,618.0	13,619.0	4.0	4	Avalon, Original Hole
6/1/2017	13,645.0	13,646.0	4.0	4	Avalon, Original Hole
6/1/2017	13,670.0	13,671.0	4.0	4	Avalon, Original Hole
6/1/2017	13,695.0	13,696.0	4.0	4	Avalon, Original Hole
6/1/2017	13,720.0	13,721.0	3.0	3	Avalon, Original Hole
6/1/2017	13,745.0	13,746.0	6.0	6	Avalon, Original Hole
6/1/2017	13,770.0	13,771.0	5.0	5	Avalon, Original Hole
6/1/2017	13,795.0	13,796.0	5.0	5	Avalon, Original Hole
6/1/2017	13,820.0	13,821.0	4.0	4	Avalon, Original Hole
6/1/2017	13,845.0	13,846.0	4.0	4	Avalon, Original Hole
6/1/2017	13,869.0	13,870.0	4.0	4	Avalon, Original Hole
6/1/2017	13,895.0	13,896.0	4.0	4	Avalon, Original Hole
6/1/2017	13,920.0	13,921.0	3.0	3	Avalon, Original Hole
5/31/2017	13,945.0	13,946.0	6.0	6	Avalon, Original Hole
5/31/2017	13,970.0	13,971.0	5.0	5	Avalon, Original Hole
5/31/2017	13,995.0	13,996.0	5.0	5	Avalon, Original Hole
5/31/2017	14,020.0	14,021.0	4.0	4	Avalon, Original Hole
5/31/2017	14,045.0	14,046.0	4.0	4	Avalon, Original Hole
5/31/2017	14,070.0	14,071.0	4.0	4	Avalon, Original Hole
5/31/2017	14,095.0	14,096.0	4.0	4	Avalon, Original Hole
5/31/2017	14,118.0	14,119.0	3.0	3	Avalon, Original Hole
5/30/2017	14,145.0	14,146.0	6.0	6	Avalon, Original Hole
5/31/2017	14,170.0	14,171.0	5.0	5	Avalon, Original Hole
5/31/2017	14,195.0	14,196.0	5.0	5	Avalon, Original Hole
5/31/2017	14,220.0	14,221.0	4.0	4	Avalon, Original Hole
5/31/2017	14,245.0	14,246.0	4.0	4	Avalon, Original Hole
5/31/2017	14,270.0	14,271.0	4.0	4	Avalon, Original Hole
5/31/2017	14,295.0	14,296.0	4.0	4	Avalon, Original Hole
5/31/2017	14,317.0	14,318.0	3.0	3	Avalon, Original Hole
5/31/2017	14,345.0	14,346.0	6.0	6	Avalon, Original Hole
5/31/2017	14,370.0	14,371.0	5.0	5	Avalon, Original Hole
5/31/2017	14,394.0	14,395.0	5.0	5	Avalon, Original Hole
5/31/2017	14,418.0	14,419.0	4.0	4	Avalon, Original Hole
5/31/2017	14,445.0	14,446.0	4.0	4	Avalon, Original Hole
5/31/2017	14,470.0	14,471.0	4.0	4	Avalon, Original Hole
5/31/2017	14,495.0	14,496.0	4.0	4	Avalon, Original Hole
5/31/2017	14,520.0	14,521.0	3.0	3	Avalon, Original Hole
5/30/2017	14,545.0	14,546.0	6.0	6	Avalon, Original Hole
5/30/2017	14,570.0	14,571.0	5.0	5	Avalon, Original Hole
5/30/2017	14,595.0	14,596.0	5.0	5	Avalon, Original Hole
5/30/2017	14,620.0	14,621.0	4.0	4	Avalon, Original Hole
5/30/2017	14,645.0	14,646.0	4.0	4	Avalon, Original Hole
5/30/2017	14,671.0	14,672.0	4.0	4	Avalon, Original Hole
5/30/2017	14,695.0	14,696.0	4.0	4	Avalon, Original Hole
5/30/2017	14,720.0	14,721.0	3.0	3	Avalon, Original Hole
5/30/2017	14,745.0	14,746.0	6.0	6	Avalon, Original Hole
5/30/2017	14,770.0	14,771.0	5.0	5	Avalon, Original Hole
5/30/2017	14,795.0	14,796.0	5.0	5	Avalon, Original Hole
5/30/2017	14,820.0	14,821.0	4.0	4	Avalon, Original Hole
5/30/2017	14,845.0	14,846.0	4.0	4	Avalon, Original Hole
5/30/2017	14,870.0	14,871.0	4.0	4	Avalon, Original Hole
5/30/2017	14,895.0	14,896.0	4.0	4	Avalon, Original Hole
5/30/2017	14,920.0	14,921.0	3.0	3	Avalon, Original Hole
5/30/2017	14,945.0	14,946.0	6.0	6	Avalon, Original Hole
5/30/2017	14,970.0	14,971.0	5.0	5	Avalon, Original Hole
5/30/2017	14,995.0	14,996.0	5.0	5	Avalon, Original Hole
5/30/2017	15,020.0	15,021.0	4.0	4	Avalon, Original Hole



Wellbore Schematic

Well Name SALADO DRAW WE 23 FED P25 002H	Lease NMNM118723	Field Name JENNINGS	Business Unit Mid-Continent
---	---------------------	------------------------	--------------------------------



Perforations					
Date	Top (ftKB)	Btm (ftKB)	Shot Dens (shots/ft)	Entered Shot Total	Linked Zone
5/30/2017	15,045.0	15,046.0	4.0	4	Avalon, Original Hole
5/30/2017	15,070.0	15,071.0	4.0	4	Avalon, Original Hole
5/30/2017	15,095.0	15,096.0	4.0	4	Avalon, Original Hole
5/30/2017	15,120.0	15,121.0	3.0	3	Avalon, Original Hole
5/29/2017	15,145.0	15,146.0	6.0	6	Avalon, Original Hole
5/29/2017	15,174.0	15,175.0	5.0	5	Avalon, Original Hole
5/29/2017	15,195.0	15,196.0	5.0	5	Avalon, Original Hole
5/29/2017	15,220.0	15,221.0	4.0	4	Avalon, Original Hole
5/29/2017	15,245.0	15,246.0	4.0	4	Avalon, Original Hole
5/29/2017	15,270.0	15,271.0	4.0	4	Avalon, Original Hole
5/29/2017	15,295.0	15,296.0	4.0	4	Avalon, Original Hole
5/29/2017	15,318.0	15,319.0	3.0	3	Avalon, Original Hole
5/28/2017	15,345.0	15,346.0	6.0	6	Avalon, Original Hole
5/28/2017	15,370.0	15,371.0	5.0	5	Avalon, Original Hole
5/28/2017	15,395.0	15,396.0	5.0	5	Avalon, Original Hole
5/28/2017	15,420.0	15,421.0	4.0	4	Avalon, Original Hole
5/28/2017	15,445.0	15,446.0	4.0	4	Avalon, Original Hole
5/28/2017	15,470.0	15,471.0	4.0	4	Avalon, Original Hole
5/28/2017	15,495.0	15,496.0	4.0	4	Avalon, Original Hole
5/28/2017	15,520.0	15,521.0	3.0	3	Avalon, Original Hole
5/27/2017	15,545.0	15,546.0	6.0	6	Avalon, Original Hole
5/27/2017	15,570.0	15,571.0	5.0	5	Avalon, Original Hole
5/27/2017	15,595.0	15,596.0	5.0	5	Avalon, Original Hole
5/27/2017	15,620.0	15,621.0	4.0	4	Avalon, Original Hole
5/27/2017	15,645.0	15,646.0	4.0	4	Avalon, Original Hole
5/27/2017	15,670.0	15,671.0	4.0	4	Avalon, Original Hole
5/27/2017	15,695.0	15,696.0	4.0	4	Avalon, Original Hole
5/27/2017	15,720.0	15,721.0	3.0	3	Avalon, Original Hole
5/27/2017	15,745.0	15,746.0	6.0	6	Avalon, Original Hole
5/27/2017	15,770.0	15,771.0	5.0	5	Avalon, Original Hole
5/27/2017	15,795.0	15,796.0	5.0	5	Avalon, Original Hole
5/27/2017	15,820.0	15,821.0	4.0	4	Avalon, Original Hole
5/27/2017	15,845.0	15,846.0	4.0	4	Avalon, Original Hole
5/27/2017	15,869.0	15,870.0	4.0	4	Avalon, Original Hole
5/27/2017	15,895.0	15,896.0	4.0	4	Avalon, Original Hole
5/27/2017	15,920.0	15,921.0	3.0	3	Avalon, Original Hole
5/26/2017	15,945.0	15,946.0	6.0	6	Avalon, Original Hole
5/26/2017	15,970.0	15,971.0	5.0	5	Avalon, Original Hole
5/26/2017	15,993.0	15,994.0	5.0	5	Avalon, Original Hole
5/26/2017	16,020.0	16,021.0	4.0	4	Avalon, Original Hole
5/26/2017	16,045.0	16,046.0	4.0	4	Avalon, Original Hole
5/26/2017	16,070.0	16,071.0	4.0	4	Avalon, Original Hole
5/26/2017	16,095.0	16,096.0	4.0	4	Avalon, Original Hole
5/26/2017	16,117.0	16,118.0	3.0	3	Avalon, Original Hole
5/26/2017	16,145.0	16,146.0	6.0	6	Avalon, Original Hole
5/26/2017	16,170.0	16,171.0	5.0	5	Avalon, Original Hole
5/26/2017	16,195.0	16,196.0	5.0	5	Avalon, Original Hole
5/26/2017	16,220.0	16,221.0	4.0	4	Avalon, Original Hole
5/26/2017	16,245.0	16,246.0	4.0	4	Avalon, Original Hole
5/26/2017	16,270.0	16,271.0	4.0	4	Avalon, Original Hole
5/26/2017	16,295.0	16,296.0	4.0	4	Avalon, Original Hole
5/26/2017	16,316.0	16,317.0	3.0	3	Avalon, Original Hole
5/26/2017	16,345.0	16,346.0	6.0	6	Avalon, Original Hole
5/26/2017	16,370.0	16,371.0	5.0	5	Avalon, Original Hole
5/26/2017	16,393.0	16,394.0	5.0	5	Avalon, Original Hole
5/26/2017	16,420.0	16,421.0	4.0	4	Avalon, Original Hole
5/26/2017	16,445.0	16,446.0	4.0	4	Avalon, Original Hole
5/26/2017	16,470.0	16,471.0	4.0	4	Avalon, Original Hole



Wellbore Schematic

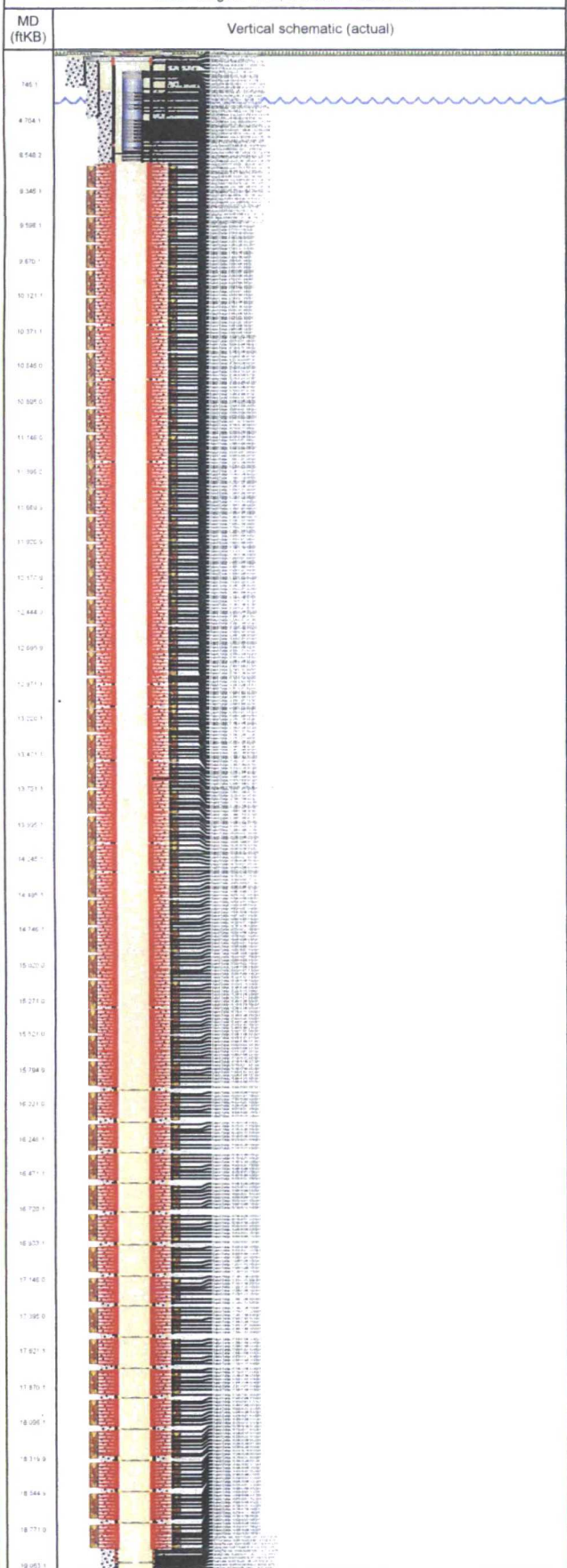
Well Name
SALADO DRAW WE 23 FED P25 002H

Lease
NMNM118723

Field Name
JENNINGS

Business Unit
Mid-Continent

Land - Original Hole, 8/9/2017 7:52:55 AM



Perforations

Date	Top (ftKB)	Btm (ftKB)	Shot Dens (shots/ft)	Entered Shot Total	Linked Zone
5/26/2017	16,497.0	16,498.0	4.0	4	Avalon, Original Hole
5/26/2017	16,520.0	16,521.0	3.0	3	Avalon, Original Hole
5/25/2017	16,545.0	16,546.0	6.0	6	Avalon, Original Hole
5/25/2017	16,570.0	16,571.0	5.0	5	Avalon, Original Hole
5/25/2017	16,595.0	16,596.0	5.0	5	Avalon, Original Hole
5/25/2017	16,620.0	16,621.0	4.0	4	Avalon, Original Hole
5/25/2017	16,645.0	16,646.0	4.0	4	Avalon, Original Hole
5/25/2017	16,670.0	16,671.0	4.0	4	Avalon, Original Hole
5/25/2017	16,695.0	16,696.0	4.0	4	Avalon, Original Hole
5/25/2017	16,720.0	16,721.0	3.0	3	Avalon, Original Hole
5/25/2017	16,748.0	16,749.0	6.0	6	Avalon, Original Hole
5/25/2017	16,770.0	16,771.0	5.0	5	Avalon, Original Hole
5/25/2017	16,795.0	16,796.0	5.0	5	Avalon, Original Hole
5/25/2017	16,820.0	16,821.0	4.0	4	Avalon, Original Hole
5/25/2017	16,845.0	16,846.0	4.0	4	Avalon, Original Hole
5/25/2017	16,870.0	16,871.0	4.0	4	Avalon, Original Hole
5/25/2017	16,895.0	16,896.0	4.0	4	Avalon, Original Hole
5/25/2017	16,920.0	16,921.0	3.0	3	Avalon, Original Hole
5/25/2017	16,945.0	16,946.0	6.0	6	Avalon, Original Hole
5/25/2017	16,970.0	16,971.0	5.0	5	Avalon, Original Hole
5/25/2017	16,995.0	16,996.0	5.0	5	Avalon, Original Hole
5/25/2017	17,020.0	17,021.0	4.0	4	Avalon, Original Hole
5/25/2017	17,045.0	17,046.0	4.0	4	Avalon, Original Hole
5/25/2017	17,070.0	17,071.0	4.0	4	Avalon, Original Hole
5/25/2017	17,095.0	17,096.0	4.0	4	Avalon, Original Hole
5/25/2017	17,120.0	17,121.0	3.0	3	Avalon, Original Hole
5/25/2017	17,145.0	17,146.0	6.0	6	Avalon, Original Hole
5/25/2017	17,170.0	17,171.0	5.0	5	Avalon, Original Hole
5/25/2017	17,195.0	17,196.0	5.0	5	Avalon, Original Hole
5/25/2017	17,220.0	17,221.0	4.0	4	Avalon, Original Hole
5/25/2017	17,245.0	17,246.0	4.0	4	Avalon, Original Hole
5/25/2017	17,270.0	17,271.0	4.0	4	Avalon, Original Hole
5/25/2017	17,295.0	17,296.0	4.0	4	Avalon, Original Hole
5/25/2017	17,320.0	17,321.0	3.0	3	Avalon, Original Hole
5/24/2017	17,345.0	17,346.0	6.0	6	Avalon, Original Hole
5/24/2017	17,370.0	17,371.0	5.0	5	Avalon, Original Hole
5/24/2017	17,395.0	17,396.0	5.0	5	Avalon, Original Hole
5/24/2017	17,420.0	17,421.0	4.0	4	Avalon, Original Hole
5/24/2017	17,448.0	17,449.0	4.0	4	Avalon, Original Hole
5/24/2017	17,470.0	17,471.0	4.0	4	Avalon, Original Hole
5/24/2017	17,495.0	17,496.0	4.0	4	Avalon, Original Hole
5/24/2017	17,520.0	17,521.0	3.0	3	Avalon, Original Hole
5/14/2017	17,545.0	17,546.0	6.0	6	Avalon, Original Hole
5/14/2017	17,568.0	17,569.0	5.0	5	Avalon, Original Hole
5/14/2017	17,595.0	17,596.0	5.0	5	Avalon, Original Hole
5/14/2017	17,620.0	17,621.0	4.0	4	Avalon, Original Hole
5/14/2017	17,645.0	17,646.0	4.0	4	Avalon, Original Hole
5/14/2017	17,670.0	17,671.0	4.0	4	Avalon, Original Hole
5/14/2017	17,693.0	17,694.0	4.0	4	Avalon, Original Hole
5/14/2017	17,720.0	17,721.0	3.0	3	Avalon, Original Hole
5/14/2017	17,745.0	17,746.0	6.0	6	Avalon, Original Hole
5/14/2017	17,770.0	17,771.0	5.0	5	Avalon, Original Hole
5/14/2017	17,795.0	17,796.0	5.0	5	Avalon, Original Hole
5/14/2017	17,820.0	17,821.0	4.0	4	Avalon, Original Hole
5/14/2017	17,845.0	17,846.0	4.0	4	Avalon, Original Hole
5/14/2017	17,870.0	17,871.0	4.0	4	Avalon, Original Hole
5/14/2017	17,895.0	17,896.0	4.0	4	Avalon, Original Hole
5/14/2017	17,920.0	17,921.0	3.0	3	Avalon, Original Hole



Wellbore Schematic

Well Name SALADO DRAW WE 23 FED P25 002H	Lease NMNM118723	Field Name JENNINGS	Business Unit Mid-Continent
---	---------------------	------------------------	--------------------------------

Land - Original Hole, 8/9/2017 7:52:56 AM



Perforations					
Date	Top (ftKB)	Btm (ftKB)	Shot Dens (shots/ft)	Entered Shot Total	Linked Zone
5/13/2017	17,945.0	17,946.0	6.0	6	Avalon, Original Hole
5/13/2017	17,970.0	17,971.0	5.0	5	Avalon, Original Hole
5/13/2017	17,995.0	17,996.0	5.0	5	Avalon, Original Hole
5/13/2017	18,020.0	18,021.0	4.0	4	Avalon, Original Hole
5/13/2017	18,045.0	18,046.0	4.0	4	Avalon, Original Hole
5/13/2017	18,070.0	18,071.0	4.0	4	Avalon, Original Hole
5/13/2017	18,095.0	18,096.0	4.0	4	Avalon, Original Hole
5/13/2017	18,120.0	18,121.0	3.0	3	Avalon, Original Hole
5/13/2017	18,145.0	18,146.0	6.0	6	Avalon, Original Hole
5/13/2017	18,170.0	18,171.0	5.0	5	Avalon, Original Hole
5/13/2017	18,196.0	18,197.0	5.0	5	Avalon, Original Hole
5/13/2017	18,220.0	18,221.0	4.0	4	Avalon, Original Hole
5/13/2017	18,245.0	18,246.0	4.0	4	Avalon, Original Hole
5/13/2017	18,268.0	18,269.0	4.0	4	Avalon, Original Hole
5/13/2017	18,295.0	18,296.0	4.0	4	Avalon, Original Hole
5/13/2017	18,315.0	18,316.0	3.0	3	Avalon, Original Hole
5/13/2017	18,345.0	18,346.0	6.0	6	Avalon, Original Hole
5/13/2017	18,370.0	18,371.0	5.0	5	Avalon, Original Hole
5/13/2017	18,395.0	18,396.0	5.0	5	Avalon, Original Hole
5/13/2017	18,420.0	18,421.0	4.0	4	Avalon, Original Hole
5/13/2017	18,445.0	18,446.0	4.0	4	Avalon, Original Hole
5/13/2017	18,470.0	18,471.0	4.0	4	Avalon, Original Hole
5/13/2017	18,495.0	18,496.0	4.0	4	Avalon, Original Hole
5/13/2017	18,520.0	18,521.0	3.0	3	Avalon, Original Hole
5/12/2017	18,545.0	18,546.0	6.0	6	Avalon, Original Hole
5/12/2017	18,570.0	18,571.0	5.0	5	Avalon, Original Hole
5/12/2017	18,595.0	18,596.0	5.0	5	Avalon, Original Hole
5/12/2017	18,620.0	18,621.0	4.0	4	Avalon, Original Hole
5/12/2017	18,645.0	18,646.0	4.0	4	Avalon, Original Hole
5/12/2017	18,670.0	18,671.0	4.0	4	Avalon, Original Hole
5/12/2017	18,695.0	18,696.0	4.0	4	Avalon, Original Hole
5/12/2017	18,720.0	18,721.0	3.0	3	Avalon, Original Hole
5/6/2017	18,745.0	18,746.0	3.0	3	Avalon, Original Hole
5/6/2017	18,770.0	18,771.0	4.0	4	Avalon, Original Hole
5/6/2017	18,795.0	18,796.0	4.0	4	Avalon, Original Hole
5/6/2017	18,820.0	18,821.0	4.0	4	Avalon, Original Hole
5/6/2017	18,845.0	18,846.0	4.0	4	Avalon, Original Hole
5/6/2017	18,870.0	18,871.0	5.0	5	Avalon, Original Hole
5/6/2017	18,895.0	18,896.0	5.0	5	Avalon, Original Hole
5/6/2017	18,920.0	18,921.0	6.0	6	Avalon, Original Hole

Other Strings					
Run Date	Pull Date	Set Depth (ftKB)	Com		
Other In Hole					
Des	Top (ftKB)	Btm (ftKB)	Run Date	Pull Date	Com
Tubing Hanger	32.4	33.4	6/23/2017		
BPV	32.4	32.9	6/23/2017		
Composite Frac Plug (drop ball)	9,333.0	9,334.0	6/10/2017	6/18/2017	Stage 49
Composite Frac Plug (drop ball)	9,533.0	9,534.0	6/9/2017	6/18/2017	Stage 48
Composite Frac Plug (drop ball)	9,733.0	9,734.0	6/9/2017	6/18/2017	Stage 47
Composite Frac Plug (drop ball)	9,934.0	9,935.0	6/8/2017	6/18/2017	Stage 46
Composite Frac Plug (drop ball)	10,133.0	10,134.0	6/8/2017	6/18/2017	Stage 45
Composite Frac Plug (drop ball)	10,333.0	10,334.0	6/7/2017	6/18/2017	Stage 44



Wellbore Schematic

Well Name SALADO DRAW WE 23 FED P25 002H	Lease NMNM118723	Field Name JENNINGS	Business Unit Mid-Continent
---	---------------------	------------------------	--------------------------------

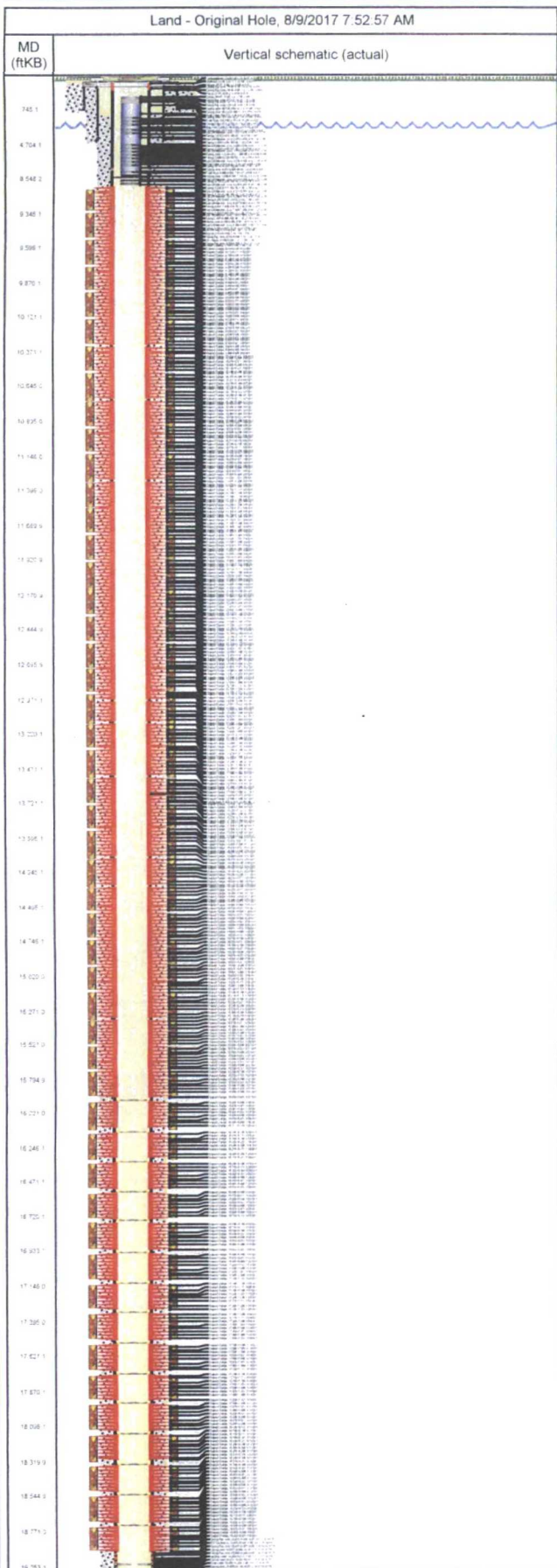


Other In Hole					
Des	Top (ftKB)	Btm (ftKB)	Run Date	Pull Date	Com
Composite Frac Plug (drop ball)	10,533.0	10,534.0	6/7/2017	6/18/2017	Stage 43
Composite Frac Plug (drop ball)	10,733.0	10,734.0	6/6/2017	6/18/2017	Stage 42
Composite Frac Plug (drop ball)	10,933.0	10,934.0	6/6/2017	6/18/2017	Stage 41
Composite Frac Plug (drop ball)	11,134.0	11,135.0	6/5/2017	6/18/2017	Stage 40
Composite Frac Plug (drop ball)	11,329.0	11,330.0	6/5/2017	6/18/2017	Stage 39
Composite Frac Plug (drop ball)	11,532.0	11,533.0	6/4/2017	6/18/2017	Stage 38
Composite Frac Plug (drop ball)	11,733.0	11,734.0	6/4/2017	6/18/2017	Stage 37
Composite Frac Plug (drop ball)	11,933.0	11,934.0	6/4/2017	6/18/2017	Stage 36
Composite Frac Plug (drop ball)	12,133.0	12,134.0	6/3/2017	6/18/2017	Stage 35
Composite Frac Plug (drop ball)	12,333.0	12,334.0	6/3/2017	6/18/2017	Stage 34
Composite Frac Plug (drop ball)	12,533.0	12,534.0	6/3/2017	6/18/2017	Stage 33
Composite Frac Plug (drop ball)	12,733.0	12,734.0	6/2/2017	6/18/2017	Stage 32
Composite Frac Plug (drop ball)	12,933.0	12,934.0	6/2/2017	6/18/2017	Stage 31
Composite Frac Plug (drop ball)	13,133.0	13,134.0	6/2/2017	6/18/2017	Stage 30
Composite Frac Plug (drop ball)	13,333.0	13,334.0	6/2/2017	6/18/2017	Stage 29
Composite Frac Plug (drop ball)	13,531.0	13,532.0	6/1/2017	6/18/2017	Stage 28
Composite Frac Plug (drop ball)	13,733.0	13,734.0	6/1/2017	6/18/2017	Stage 27
Composite Frac Plug (drop ball)	13,933.0	13,934.0	6/1/2017	6/18/2017	Stage 26
Composite Frac Plug (drop ball)	14,133.0	14,134.0	5/31/2017	6/18/2017	Stage 25
Composite Frac Plug (drop ball)	14,330.0	14,331.0	5/31/2017	6/18/2017	Stage 24
Composite Frac Plug (drop ball)	14,533.0	14,534.0	5/31/2017	6/18/2017	Stage 23
Composite Frac Plug (drop ball)	14,733.0	14,734.0	5/30/2017	6/18/2017	Stage 22
Composite Frac Plug (drop ball)	14,933.0	14,934.0	5/30/2017	6/18/2017	Stage 21
Composite Frac Plug (drop ball)	15,133.0	15,134.0	5/30/2017	6/18/2017	Stage 20
Composite Frac Plug (drop ball)	15,330.0	15,331.0	5/29/2017	6/18/2017	Stage 19
Composite Frac Plug (drop ball)	15,533.0	15,534.0	5/27/2017	6/18/2017	Stage 18
Composite Frac Plug (drop ball)	15,733.0	15,734.0	5/27/2017	6/18/2017	Stage 17
Composite Frac Plug (drop ball)	15,933.0	15,934.0	5/27/2017		Stage 16
Composite Frac Plug (drop ball)	16,133.0	16,134.0	5/26/2017		Stage 15
Composite Frac Plug (drop ball)	16,333.0	16,334.0	5/26/2017		Stage 14
Composite Frac Plug (drop ball)	16,534.0	16,535.0	5/26/2017		Stage 13
Composite Frac Plug (drop ball)	16,733.0	16,734.0	5/25/2017		Stage 12



Wellbore Schematic

Well Name SALADO DRAW WE 23 FED P25 002H	Lease NMNM118723	Field Name JENNINGS	Business Unit Mid-Continent
---	---------------------	------------------------	--------------------------------



Other In Hole					
Des	Top (ftKB)	Btm (ftKB)	Run Date	Pull Date	Com
Composite Frac Plug (drop ball)	16,933.0	16,934.0	5/25/2017		Stage 11
Composite Frac Plug (drop ball)	17,133.0	17,134.0	5/25/2017		Stage 10
Composite Frac Plug (drop ball)	17,333.0	17,334.0	5/25/2017		Stage 9
Composite Frac Plug (drop ball)	17,533.0	17,534.0	5/24/2017		Stage 8
Composite Frac Plug (drop ball)	17,732.0	17,733.0	5/14/2017		Stage 7
Composite Frac Plug (drop ball)	17,933.0	17,934.0	5/14/2017		Stage 6
Composite Frac Plug (drop ball)	18,133.0	18,134.0	5/13/2017		Stage 5
Composite Frac Plug (drop ball)	18,333.0	18,334.0	5/13/2017		Stage 4
Composite Frac Plug (drop ball)	18,533.0	18,534.0	5/13/2017		Stage 3
Composite Frac Plug (drop ball)	18,733.0	18,734.0	5/12/2017		Stage 2