

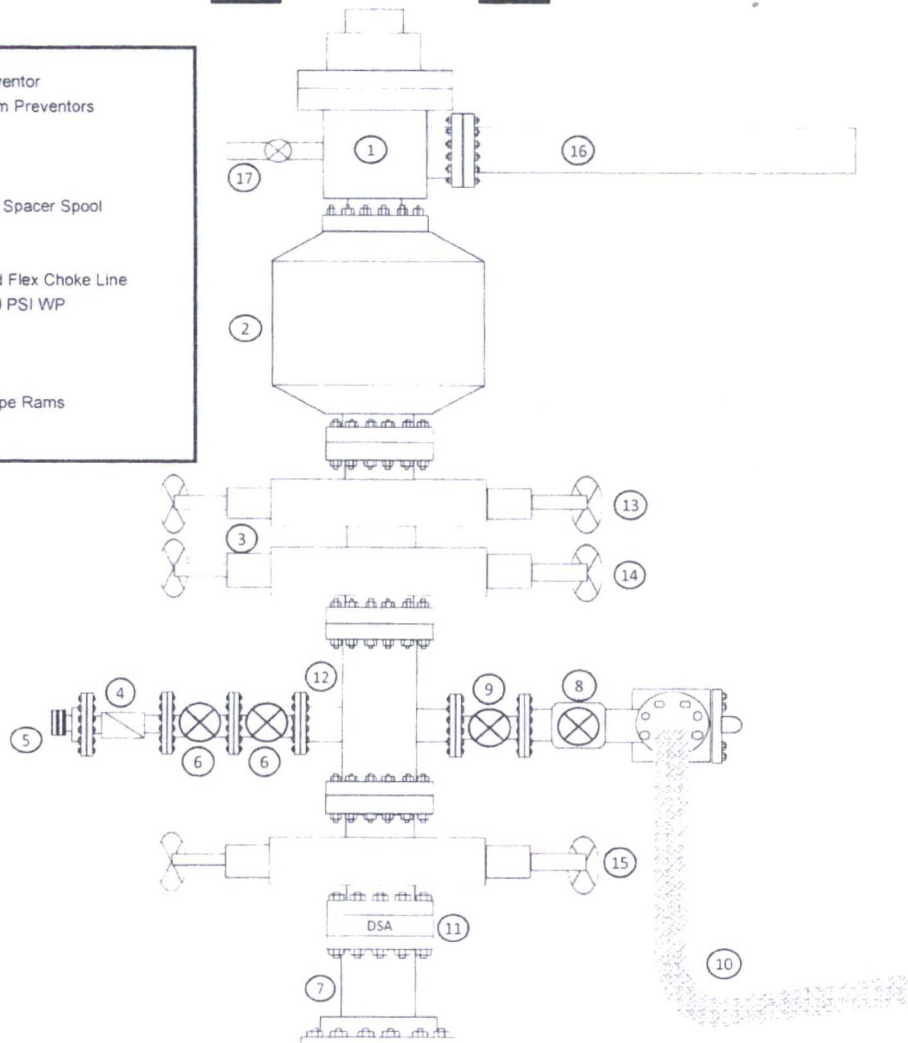
# Exhibit 1

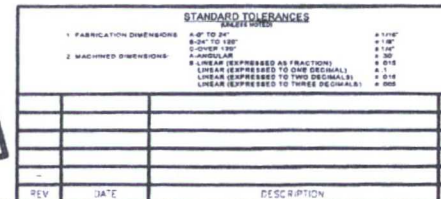
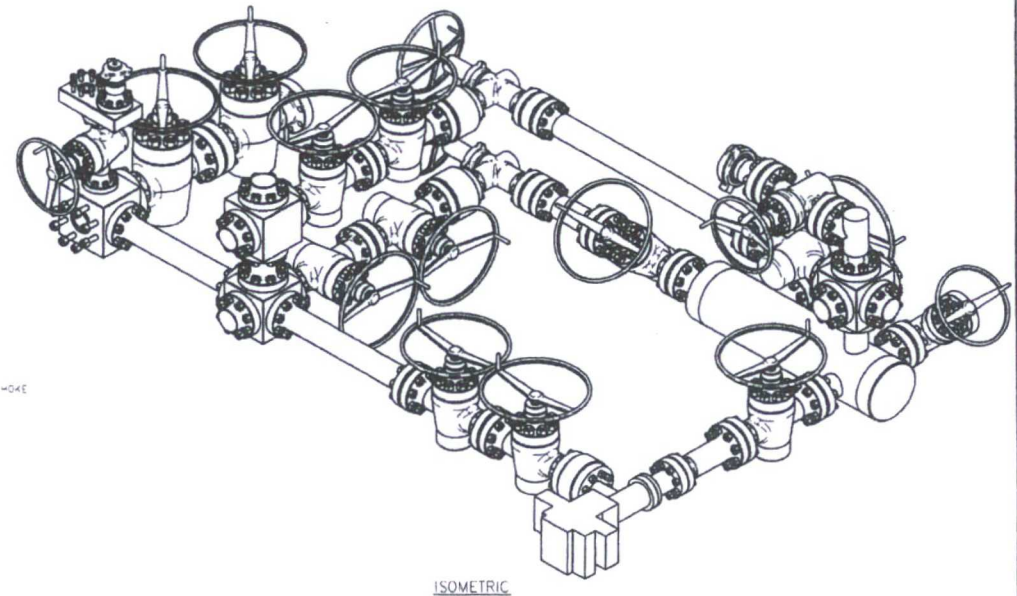
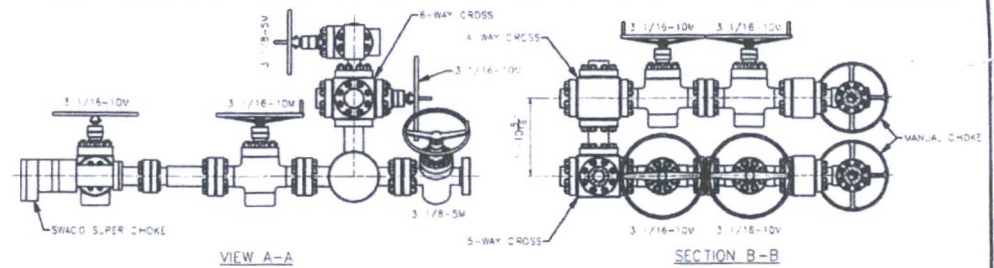
## EOG Resources

### 10M BOPE

Rig Floor

- 1 13 5/8" Rotating Head
- 2 Hydril 13 5/8" 10,000 PSI WP GK Annular Preventor
- 3 13 5/8" Cameron Type "U" 10,000 PSI WP Ram Preventors
- 4 2 1/16" - 10,000 PSI WP Check Valve
- 5 10,000 PSI WP - 1502 Union to kill line
- 6 2 1/16" - 10,000 PSI WP Manual Valves
- 7 13 5/8" 3,000 PSI WP x 13 5/8" 5,000 PSI WP Spacer Spool
- 8 4 1/16" 10,000 PSI WP HCR Valve
- 9 4 1/16" 10,000 PSI WP Manual Valve
- 10 6" OD x 3" ID 10,000 PSI WP Steel Armoured Flex Choke Line
- 11 DSA - 13 5/8" 10,000 PSI WP x 13 5/8" 5,000 PSI WP
- 12 Mud Cross - 13 5/8" 10,000 PSI WP
- 13 Blind Rams
- 14 Pipe Rams
- 15 13 5/8" Cameron Type "U" 10,000 PSI WP Pipe Rams
- 16 Flow Line
- 17 2" Fill Line





THIS DRAWING AND THE IDEAS AND INFORMATION INCLUDED IN THIS  
DRAWING ARE PROPRIETARY AND ARE NOT TO BE REPRODUCED,  
DISTRIBUTED OR DISCLOSED IN ANY MANNER, WITHOUT THE PRIOR  
WRITTEN CONSENT OF A DULY AUTHORIZED OFFICER  
OF HELMERICH & PAYNE INT'L DRILLING CO.

ISSUED FOR  
FABRICATION  
February-10-2014  
DRAFTSMAN *MW*  
ENGINEER *td*

DRAWN: MWL	DATE 2/10/2014	DWG. NO.: HP-D1254	REV: —
SCALE: 3/4"=1'-0"	SHEET 1 OF 1		