

**APD ID:** 10400008128

**Submission Date:** 03/07/2017

Highlighted data  
reflects the most  
recent changes

**Operator Name:** OXY USA INCORPORATED

**Well Name:** MESA VERDE 17-8 FEDERAL COM

**Well Number:** 6H

[Show Final Text](#)
**Well Type:** OIL WELL

**Well Work Type:** Drill

## Section 1 - Geologic Formations

Formation ID	Formation Name	Elevation	True Vertical Depth	Measured Depth	Lithologies	Mineral Resources	Producing Formation
17746	RUSTLER	3561	942	942	SHALE,DOLOMITE,ANHYDRITE	USEABLE WATER	No
18574	SALADO	1899	1028	1028	SHALE,DOLOMITE,HALITE,ANHYDRITE	OTHER : SALT	No
17762	CASTILE	-409	3336	3336	ANHYDRITE	OTHER : salt	No
17719	LAMAR	-1724	4651	4651	LIMESTONE,SANDSTONE,SILTSTONE	NATURAL GAS,OIL,OTHER : BRINE	No
15332	BELL CANYON	-1739	4666	4666	SANDSTONE,SILTSTONE	NATURAL GAS,OIL,OTHER : BRINE	No
15316	CHERRY CANYON	-2591	5518	5518	SANDSTONE,SILTSTONE	NATURAL GAS,OIL,OTHER : BRINE	No
17713	BRUSHY CANYON	-4008	6935	6940	LIMESTONE,SANDSTONE,SILTSTONE	NATURAL GAS,OIL,OTHER : BRINE	No
17688	BONE SPRING	-5576	8503	8532	LIMESTONE,SANDSTONE,SILTSTONE	NATURAL GAS,OIL	No
15338	BONE SPRING 1ST	-6620	9547	9592	LIMESTONE,SANDSTONE,SILTSTONE	NATURAL GAS,OIL	No
17737	BONE SPRING 2ND	-7011	9938	9985	LIMESTONE,SANDSTONE,SILTSTONE	NATURAL GAS,OIL	No

## Section 2 - Blowout Prevention

**Pressure Rating (PSI):** 5M

**Rating Depth:** 10603

**Equipment:** 13-5/8" 5M Annular, Blind Ram, Double Ram

**Requesting Variance?** YES

**Variance request:** Request for the use of a flexible choke line from the BOP to Choke Manifold.

**Testing Procedure:** BOP/BOPE will be tested by an independent service company to 250 psi low and the high pressure indicated above per Onshore Order 2 requirements. The System may be upgraded to a higher pressure but still tested to the working pressure listed in the table above. If the system is upgraded all the components installed will be functional and tested. Pipe rams will be operationally checked each 24 hour period. Blind rams will be operationally checked on each trip out of the hole. These checks will be noted on the daily tour sheets. Other accessories to the BOP equipment will include a Kelly cock and floor safety valve (inside BOP) and choke lines and choke manifold. A multibowl wellhead or a unionized multibowl wellhead system will be employed. The wellhead and connection to the BOPE will meet all API 6A requirements. The BOP will be tested per Onshore Order #2 after installation on the surface casing which will cover testing requirements for a

Operator Name: OXY USA INCORPORATED

Well Name: MESA VERDE 17-8 FEDERAL COM

Well Number: 6H

maximum of 30 days. If any seal subject to test pressure is broken the system will be tested. We will test the flange connection of the wellhead with a test port that is directly in the flange. We are proposing that we will run the wellhead through the rotary prior to cementing surface casing as discussed with the BLM on October 8, 2015.

**Choke Diagram Attachment:**

MesaVerde17\_8FdCom6H\_ChkManifold\_5M\_\_03-07-2017.pdf

**BOP Diagram Attachment:**

MesaVerde17\_8FdCom6H\_FlexHoseCert\_03-07-2017.pdf

MesaVerde17\_8FdCom6H\_BOP\_5M13\_58\_\_03-07-2017.pdf

### Section 3 - Casing

Casing ID	String Type	Hole Size	Csg Size	Condition	Standard	Tapered String	Top Set MD	Bottom Set MD	Top Set TVD	Bottom Set TVD	Top Set MSL	Bottom Set MSL	Calculated casing length MD	Grade	Weight	Joint Type	Collapse SF	Burst SF	Joint SF Type	Joint SF	Body SF Type	Body SF
1	SURFACE	17.5	13.375	NEW	API	N	0	993	0	993	-7042	-8035	993	J-55	54.5	BUTT	2.19	1.31	BUOY	2.59	BUOY	2.41
2	PRODUCTI ON	12.2 5	9.625	NEW	API	N	0	7500	0	7487	-7042	- 14529	7500	L-80	47	BUTT	1.21	1.43	BUOY	1.93	BUOY	1.84
3	PRODUCTI ON	12.2 5	9.625	NEW	API	N	7500	9974	7487	9930	- 14529	- 16972	2474	HCL -80	47	BUTT	1.19	1.48	BUOY	4.39	BUOY	3.54
4	LINER	8.5	5.5	NEW	API	N	9874	20635	9830	10603	- 16872	- 17645	10761	P- 110	20	OTHER - DQX	1.98	1.2	BUOY	2.54	BUOY	2.31

**Casing Attachments**

Casing ID: 1 String Type: SURFACE

Inspection Document:

Spec Document:

Tapered String Spec:

Casing Design Assumptions and Worksheet(s):

MesaVerde17\_8FdCom6H\_CsgCriteria\_03-07-2017.pdf

**Operator Name:** OXY USA INCORPORATED

**Well Name:** MESA VERDE 17-8 FEDERAL COM

**Well Number:** 6H

#### Casing Attachments

---

**Casing ID:** 2      **String Type:** PRODUCTION

**Inspection Document:**

**Spec Document:**

**Tapered String Spec:**

**Casing Design Assumptions and Worksheet(s):**

MesaVerde17\_8FdCom6H\_CsgCriteria\_03-07-2017.pdf

---

**Casing ID:** 3      **String Type:** PRODUCTION

**Inspection Document:**

**Spec Document:**

**Tapered String Spec:**

**Casing Design Assumptions and Worksheet(s):**

MesaVerde17\_8FdCom6H\_CsgCriteria\_03-07-2017.pdf

---

**Casing ID:** 4      **String Type:** LINER

**Inspection Document:**

**Spec Document:**

**Tapered String Spec:**

**Casing Design Assumptions and Worksheet(s):**

MesaVerde17\_8FdCom6H\_CsgCriteria\_03-07-2017.pdf

MesaVerde17\_8FdCom6H\_5.5\_20\_P110\_DQX\_03-07-2017.pdf

---

## Section 4 - Cement



Operator Name: OXY USA INCORPORATED

Well Name: MESA VERDE 17-8 FEDERAL COM

Well Number: 6H

String Type	Lead/Tail	Stage Tool Depth	Top MD	Bottom MD	Quantity(sx)	Yield	Density	Cu Ft	Excess%	Cement type	Additives
SURFACE	Lead		0	993	794	1.35	14.8	1072	50	Class C Cement	Accelerator
PRODUCTION	Lead	4702	0	4202	1146	1.85	12.9	2120	75	Class C Cement	Accelerator, Retarder
PRODUCTION	Tail		4202	4702	265	1.33	14.8	352	125	Class C Cement	none
PRODUCTION	Lead		0	8974	1553	3.05	10.2	4737	75	Class C Cement	Retarder
PRODUCTION	Tail		8974	9974	239	1.65	13.2	394	20	Class H Cement	Retarder, Dispersant, Salt
LINER	Lead		9874	2063 5	1740	1.63	13.2	2836	15	Class H Cement	Retarder, Low Fluid Loss Control, Dispersant, Salt

## Section 5 - Circulating Medium

Mud System Type: Closed

Will an air or gas system be Used? NO

Description of the equipment for the circulating system in accordance with Onshore Order #2:

Diagram of the equipment for the circulating system in accordance with Onshore Order #2:

**Describe what will be on location to control well or mitigate other conditions:** Sufficient mud materials to maintain mud properties and meet minimum lost circulation and weight increase requirements. The following is a general list of products: Barite, Bentonite, Gypsum, Lime, Soda Ash, Caustic Soda, Nut Plug, Cedar Fiber, Cotton Seed Hulls, Drilling Paper, Salt Water Clay, CaCl<sub>2</sub>. Oxy proposes to drill out the 13-3/8" surface casing shoe with a saturated brine system from 993-4702', which is the base of the salt system. At this point we will swap fluid systems to a high viscosity mixed metal hydroxide system. We will drill with this system to the Production Casing TD @ 9974'.

**Describe the mud monitoring system utilized:** PVT/MD Totco/Visual Monitoring

## Circulating Medium Table

Top Depth	Bottom Depth	Mud Type	Min Weight (lbs/gal)	Max Weight (lbs/gal)	Density (lbs/cu ft)	Gel Strength (lbs/100 sqft)	PH	Viscosity (CP)	Salinity (ppm)	Filtration (cc)	Additional Characteristics
0	993	WATER-BASED MUD	8.4	8.6							



**Operator Name:** OXY USA INCORPORATED

**Well Name:** MESA VERDE 17-8 FEDERAL COM

**Well Number:** 6H

Top Depth	Bottom Depth	Mud Type	Min Weight (lbs/gal)	Max Weight (lbs/gal)	Density (lbs/cu ft)	Gel Strength (lbs/100 sqft)	PH	Viscosity (CP)	Salinity (ppm)	Filtration (cc)	Additional Characteristics
993	4702	OTHER : Brine	9.8	10							
4702	9974	WATER-BASED MUD	8.8	9.6							
9974	2063 5	OIL-BASED MUD	8.8	9.6							

## Section 6 - Test, Logging, Coring

**List of production tests including testing procedures, equipment and safety measures:**

GR from TD to surface (horizontal well – vertical portion of hole). Mud Log from Intermediate Shoe to TD.

**List of open and cased hole logs run in the well:**

GR,MUDLOG

**Coring operation description for the well:**

No coring is planned at this time.

## Section 7 - Pressure

**Anticipated Bottom Hole Pressure:** 5293

**Anticipated Surface Pressure:** 2960.34

**Anticipated Bottom Hole Temperature(F):** 165

**Anticipated abnormal pressures, temperatures, or potential geologic hazards?** NO

**Describe:**

**Contingency Plans geohazards description:**

**Contingency Plans geohazards attachment:**

**Hydrogen Sulfide drilling operations plan required?** YES

**Hydrogen sulfide drilling operations plan:**

MesaVerde17\_8FdCom6H\_H2S1\_03-07-2017.pdf

MesaVerde17\_8FdCom6H\_H2S2\_03-07-2017.pdf

**Operator Name:** OXY USA INCORPORATED

**Well Name:** MESA VERDE 17-8 FEDERAL COM

**Well Number:** 6H

## Section 8 - Other Information

### **Proposed horizontal/directional/multi-lateral plan submission:**

MesaVerde17\_8FdCom6H\_DirectPlan\_03-07-2017.pdf

MesaVerde17\_8FdCom6H\_DirectPlot\_03-07-2017.pdf

### **Other proposed operations facets description:**

Well will be drilled with a walking/skidding operation. Plan to drill the two well pad in batch by section: all surface sections, intermediate sections and production sections. The wellhead will be secured with a night cap whenever the rig is not over the well.

OXY requests the option to set casing shallower yet still below the salts if losses or hole conditions require this. Cement volumes may be adjusted if casing is set shallower and a DV tool will be run in case a contingency second stage is required for cement to reach surface. If cement circulated to surface during first stage we will drop a cancellation cone and not pump the second stage.

Cement Top and Liner Overlap -

a. OXY is requesting permission to have minimum fill of cement behind the 5-1/2" production liner to be 100 ft into previous casing string. The reason for this is so that we can come back and develop shallower benches from the same 9.625" mainbore in the future.

b. Our plan is to use a whipstock for our exit through the mainbore. Based on our lateral target, we are planning a whipstock cased/hole exit so that kick-off point will allow for roughly 10deg/100' doglegs needed for the curve.

c. Cement will be brought to the top of this liner hanger

OXY requests the option to contract a Surface Rig to drill, set surface casing, and cement for this well. If the timing between rigs is such that OXY would not be able to preset surface, the Primary Rig will MIRU and drill the well in its entirety per the APD. See attached for additional spudder rig information.

### **Other proposed operations facets attachment:**

MesaVerde17\_8FdCom6H\_CsgTieBackDetail\_03-07-2017.pdf

MesaVerde17\_8FdCom6H\_DrillPlan\_03-07-2017.docx

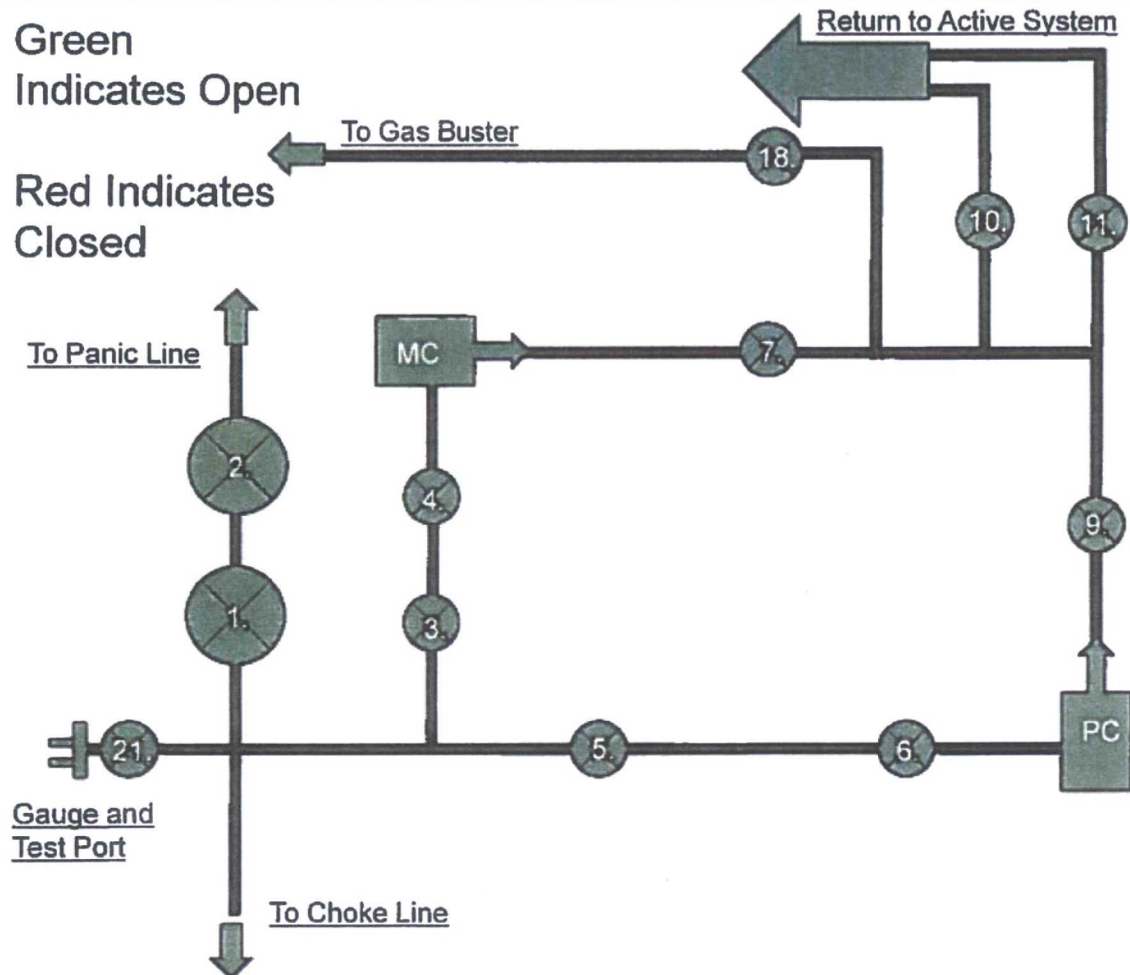
MesaVerde17\_8FdCom6H\_SpudRigData\_07-24-2017.pdf

### **Other Variance attachment:**

# 5M Choke Panel

Green  
Indicates Open

Red Indicates  
Closed



1. 4" Choke Manifold Valve
2. 4" Choke Manifold Valve
3. 3" Choke Manifold Valve
4. 3" Choke Manifold Valve
5. 3" Choke Manifold Valve
6. 3" Choke Manifold Valve
7. 3" Choke Manifold Valve
8. PC – Power Choke
9. 3" Choke Manifold Valve
10. 3" Choke Manifold Valve
11. Choke Manifold Valve
12. MC – Manual Choke

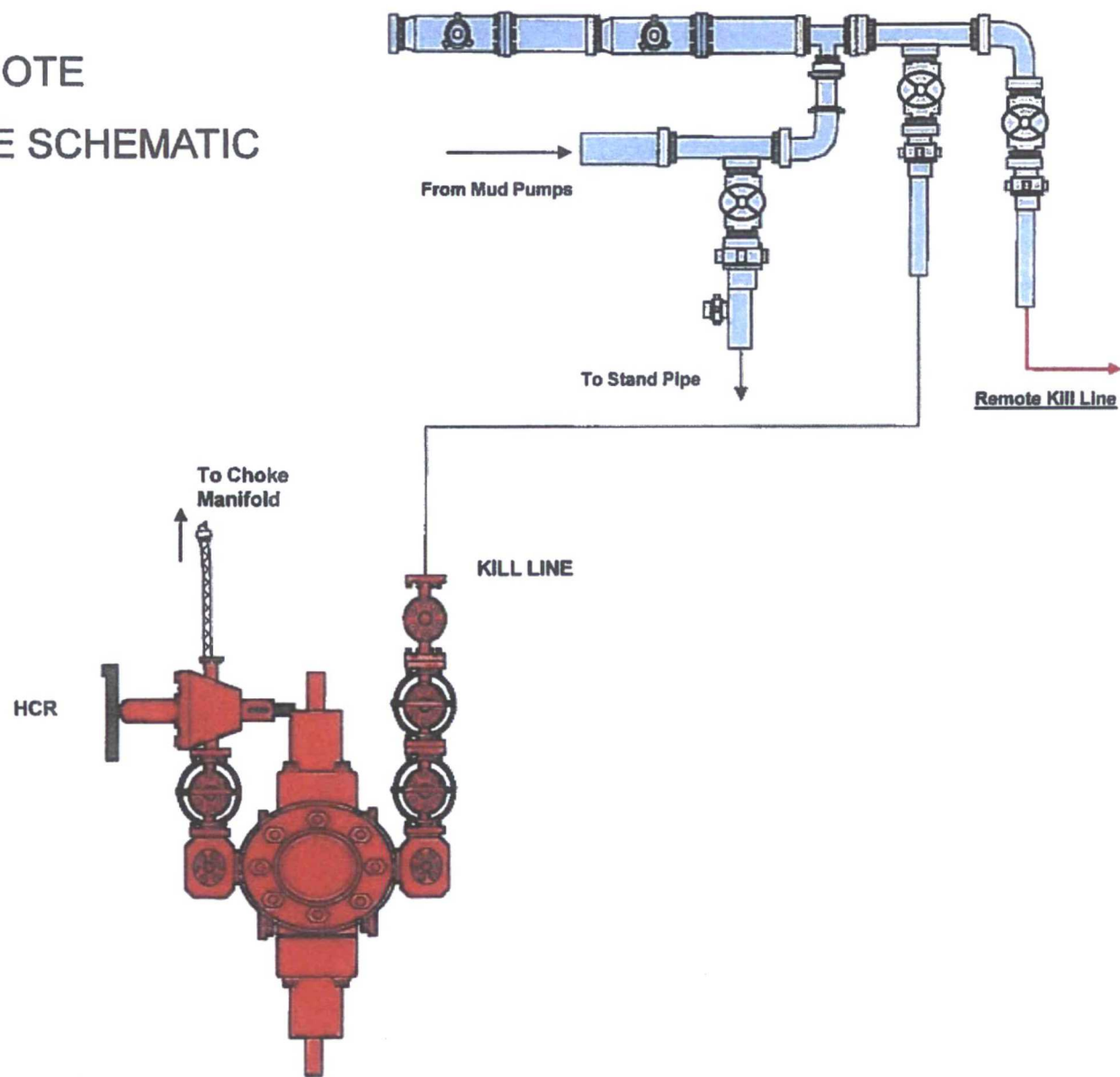
18. Choke Manifold Valve

21. Vertical Choke Manifold  
Valve

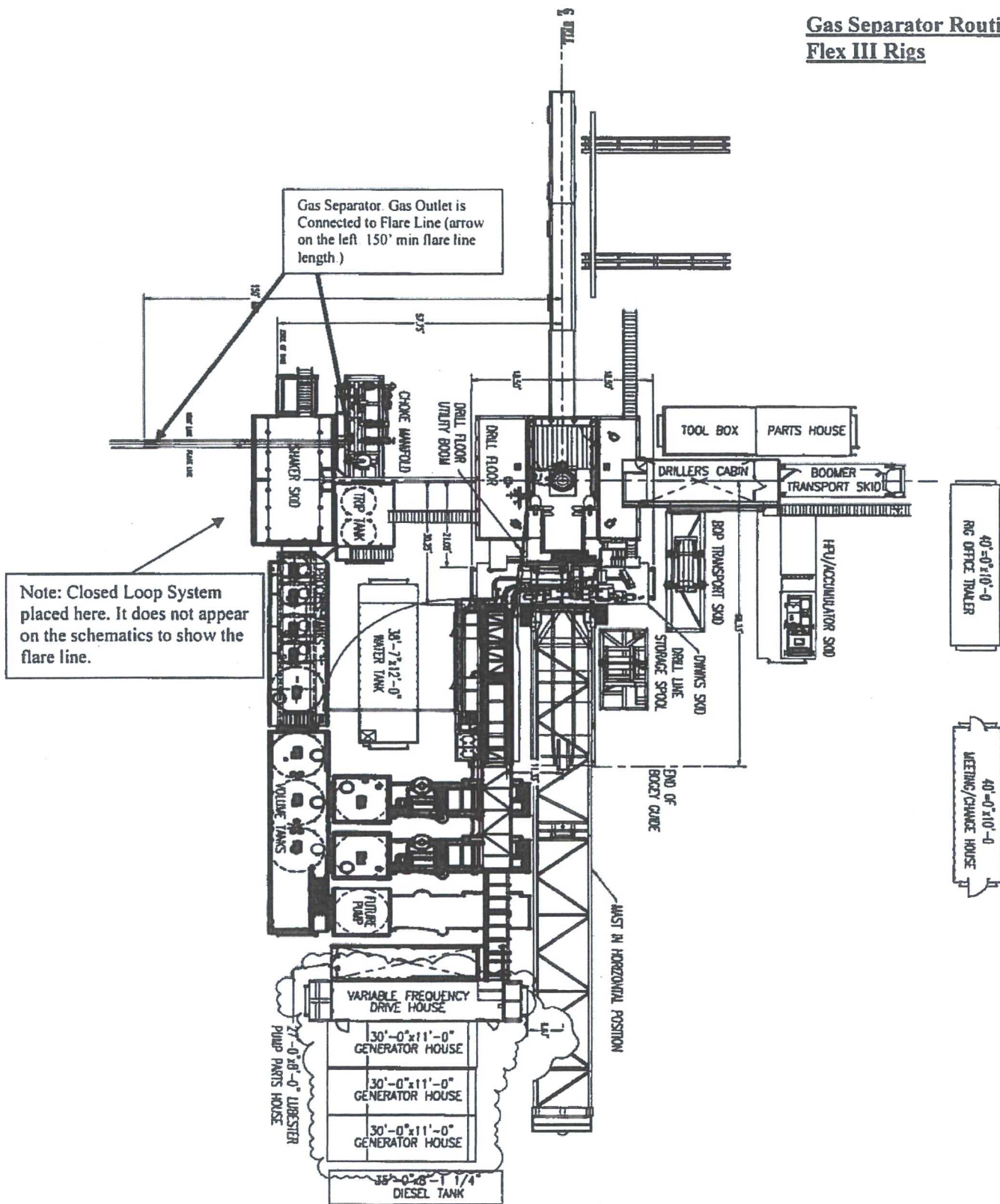
**\*All Valves 3" minimum**



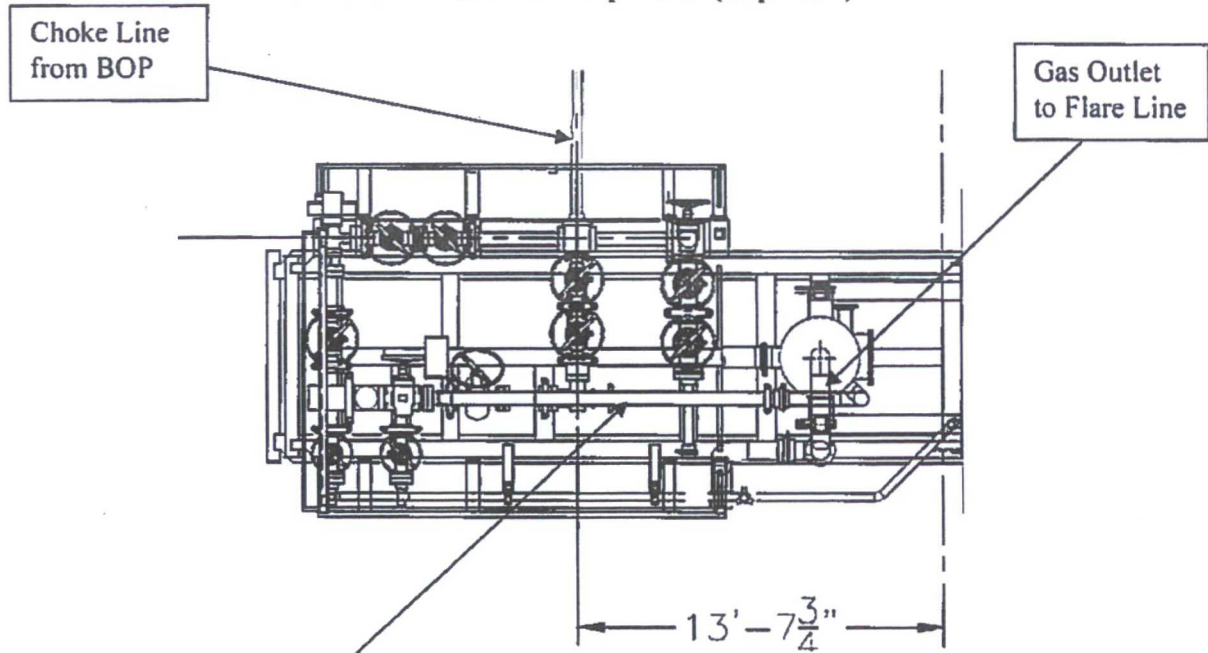
# 10M REMOTE KILL LINE SCHEMATIC



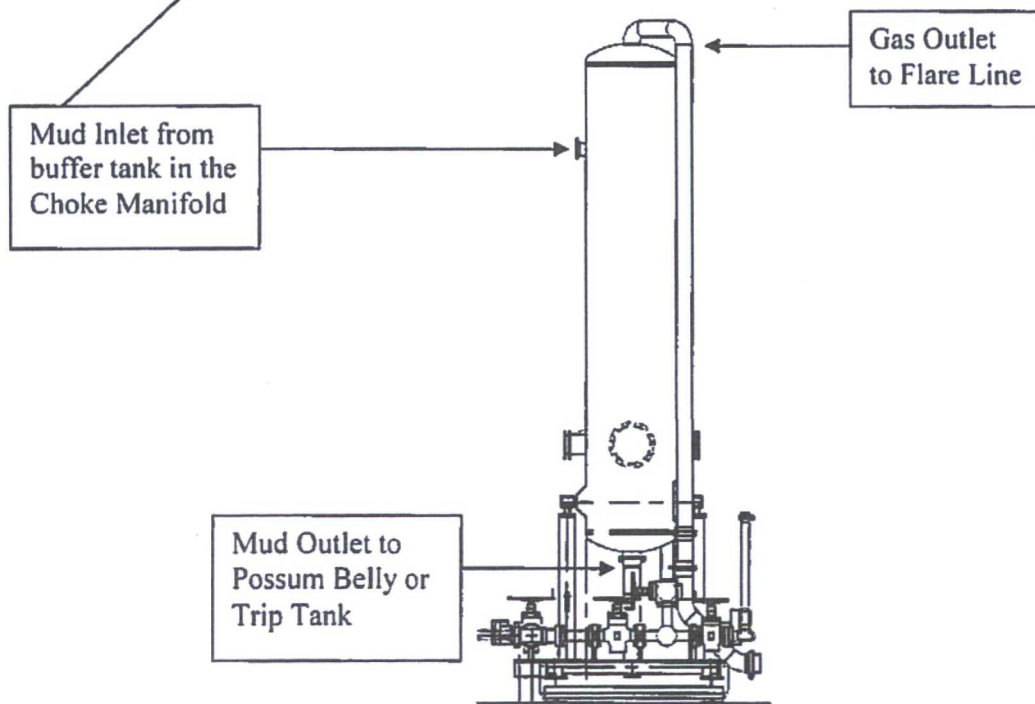
# Gas Separator Routing Flex III Rigs



**Choke Manifold – Gas Separator (Top View)**



**Choke Manifold – Gas Separator (Side View)**







Fluid Technology

Quality Document

QUALITY CONTROL INSPECTION AND TEST CERTIFICATE				CERT. N°: 746	
PURCHASER: Phoenix Beattie Co.			P.O. N°: 002491		
CONTITECH ORDER N°: 412638		HOSE TYPE: 3" ID Choke and Kill Hose			
HOSE SERIAL N°: 52777		NOMINAL / ACTUAL LENGTH: 10,67 m			
W.P. 68,96 MPa 10000 psi		T.P. 103,4 MPa 15000 psi		Duration: 60 ~ min.	
Pressure test with water at ambient temperature  <p style="text-align: center;">See attachment. (1 page)</p>					
↑ 10 mm = 10 Min. → 10 mm = 25 MPa					
COUPLINGS					
Type	Serial N°		Quality	Heat N°	
3" coupling with 4 1/16" Flange end	917	913	AISI 4130	T7998A	
			AISI 4130	26984	
INFOCHIP INSTALLED			API Spec 16 C Temperature rate: "B"		
All metal parts are flawless					
WE CERTIFY THAT THE ABOVE HOSE HAS BEEN MANUFACTURED IN ACCORDANCE WITH THE TERMS OF THE ORDER AND PRESSURE TESTED AS ABOVE WITH SATISFACTORY RESULT.					
Date:	Inspector		Quality Control		
04. April. 2008			Contitech Rubber Industrial Kft. Quality Control Dept. (1)		

## Coflex Hose Certification

Page: 1/1

[illegible]

Coflex Hose Certification

Form No 100/12

**Phoenix Beattie Corp**

11535 Britton Park Drive  
Houston, TX 77041  
Tel: (832) 327-0141  
Fax: (832) 327-0148  
E-mail: [sales@phoenixbeattie.com](mailto:sales@phoenixbeattie.com)  
[www.phoenixbeattie.com](http://www.phoenixbeattie.com)

**Delivery Note**

<b>Customer Order Number</b>	370-369-001	<b>Delivery Note Number</b>	003078	<b>Page</b>	1
<b>Customer / Invoice Address</b> HELMERICH & PAYNE INT'L DRILLING CO 1437 SOUTH BOULDER TULSA, OK 74119		<b>Delivery / Address</b> HELMERICH & PAYNE IDC ATTN: JOE STEPHENSON - RIG 370 13609 INDUSTRIAL ROAD HOUSTON, TX 77015			

<b>Customer Acc No</b>	<b>Phoenix Beattie Contract Manager</b>	<b>Phoenix Beattie Reference</b>	<b>Date</b>
H01	JJL	006330	05/23/2008

Item No	Beattie Part Number / Description	Qty Ordered	Qty Sent	Qty To Follow
1	HP10CK3A-35-4F1 3" 10K 16C C&K HOSE x 35ft OAL CW 4.1/16" API SPEC FLANGE E/ End 1: 4.1/16" 10Kpsi API Spec 6A Type 6BX Flange End 2: 4.1/16" 10Kpsi API Spec 6A Type 6BX Flange c/w BX155 Standard ring groove at each end Suitable for H2S Service Working pressure: 10,000psi Test pressure: 15,000psi Standard: API 16C Full specification Armor Guarding: Included Fire Rating: Not Included Temperature rating: -20 Deg C to +100 Deg C	1	1	0
2	SECK3-HPF3 LIFTING & SAFETY EQUIPMENT TO SUIT HP10CK3-35-F1 2 x 160mm ID Safety Clamps 2 x 244mm ID Lifting Collars & element C's 2 x 7ft Stainless Steel wire rope 3/4" OD 4 x 7.75t Shackles	1	1	0
3	SC725-200CS SAFETY CLAMP 200MM 7.25T C/S GALVANISED	1	1	0

Continued...

All goods remain the property of Phoenix Beattie until paid for in full. Any damage or shortage on this delivery must be advised within 5 days.  
Returns may be subject to a handling charge.





## Phoenix Beattie Corp

11535 Brittmoore Park Drive  
Houston, TX 77041  
Tel: (832) 327-0141  
Fax: (832) 327-0148  
E-mail: [sa1@phoenixbeattie.com](mailto:sa1@phoenixbeattie.com)  
[www.phoenixbeattie.com](http://www.phoenixbeattie.com)

## Delivery Note

Customer Order Number	370-369-001	Delivery Note Number	003078	Page	2
Customer / Invoice Address HELMERICH & PAYNE INT'L DRILLING CO 1437 SOUTH BOULDER TULSA, OK 74119		Delivery / Address HELMERICH & PAYNE IDC ATTN: JOE STEPHENSON - RIG 370 13609 INDUSTRIAL ROAD HOUSTON, TX 77015			

Customer Acc No	Phoenix Beattie Contract Manager	Phoenix Beattie Reference	Date
H01	JJL	006330	05/23/2008

Item No	Beattie Part Number / Description	Qty Ordered	Qty Sent	Qty To Follow
4	SC725-132CS SAFETY CLAMP 132MM 7.25T C/S GALVANIZED C/W BOLTS	1	1	0
5	00CERT-HYDRO HYDROSTATIC PRESSURE TEST CERTIFICATE	1	1	0
6	00CERT-LOAD LOAD TEST CERTIFICATES	1	1	0
7	00FREIGHT INBOUND / OUTBOUND FREIGHT PRE-PAY & ADD TO FINAL INVOICE NOTE: MATERIAL MUST BE ACCOMPANIED BY PAPERWORK INCLUDING THE PURCHASE ORDER, RIG NUMBER TO ENSURE PROPER PAYMENT	1	1	0

Phoenix Beattie Inspection Signature :

Received In Good Condition : Signature

Print Name

Date

All goods remain the property of Phoenix Beattie until paid for in full. Any damage or shortage on this delivery must be advised within 5 days.  
Returns may be subject to a handling charge.



## Material Identification Certificate

PA No	006330	Client	HELMERICH & PAYNE INT'L DRILLING	Client Ref	370-369-001	Page	1
-------	--------	--------	----------------------------------	------------	-------------	------	---

[illegible]

We hereby certify that these goods have been inspected by our Quality Management System, and to the best of our knowledge are found to conform to relevant industry standards within the requirements of the purchase order as issued to Phoenix Beattie Corporation.

05/23/09

## Coffex Hose Certification

Flt-5

## CERTIFICATE OF CONFORMITY

Supplier : CONTITECH RUBBER INDUSTRIAL KFT.  
Equipment : 6 pcs. Choke and Kill Hose with installed couplings  
Type : 3" x 10,67 m WP: 10000 psi  
Supplier File Number : 412638  
Date of Shipment : April. 2008  
Customer : Phoenix Beattie Co.  
Customer P.o. : 002491  
Referenced Standards  
/ Codes / Specifications : API Spec 16 C  
Serial No.: 52754,52755,52776,52777,52778,52782

### STATEMENT OF CONFORMITY

We hereby certify that the above items/equipment supplied by us are in conformity with the terms, conditions and specifications of the above Purchaser Order and that these items/equipment were fabricated inspected and tested in accordance with the referenced standards, codes and specifications and meet the relevant acceptance criteria and design requirements.

COUNTRY OF ORIGIN HUNGARY/EU

Signed :



ContiTech Rubber  
Industrial Kft.  
Quality Control Dept.  
(1)

Date: 04. April. 2008

Position: Q.C. Manager

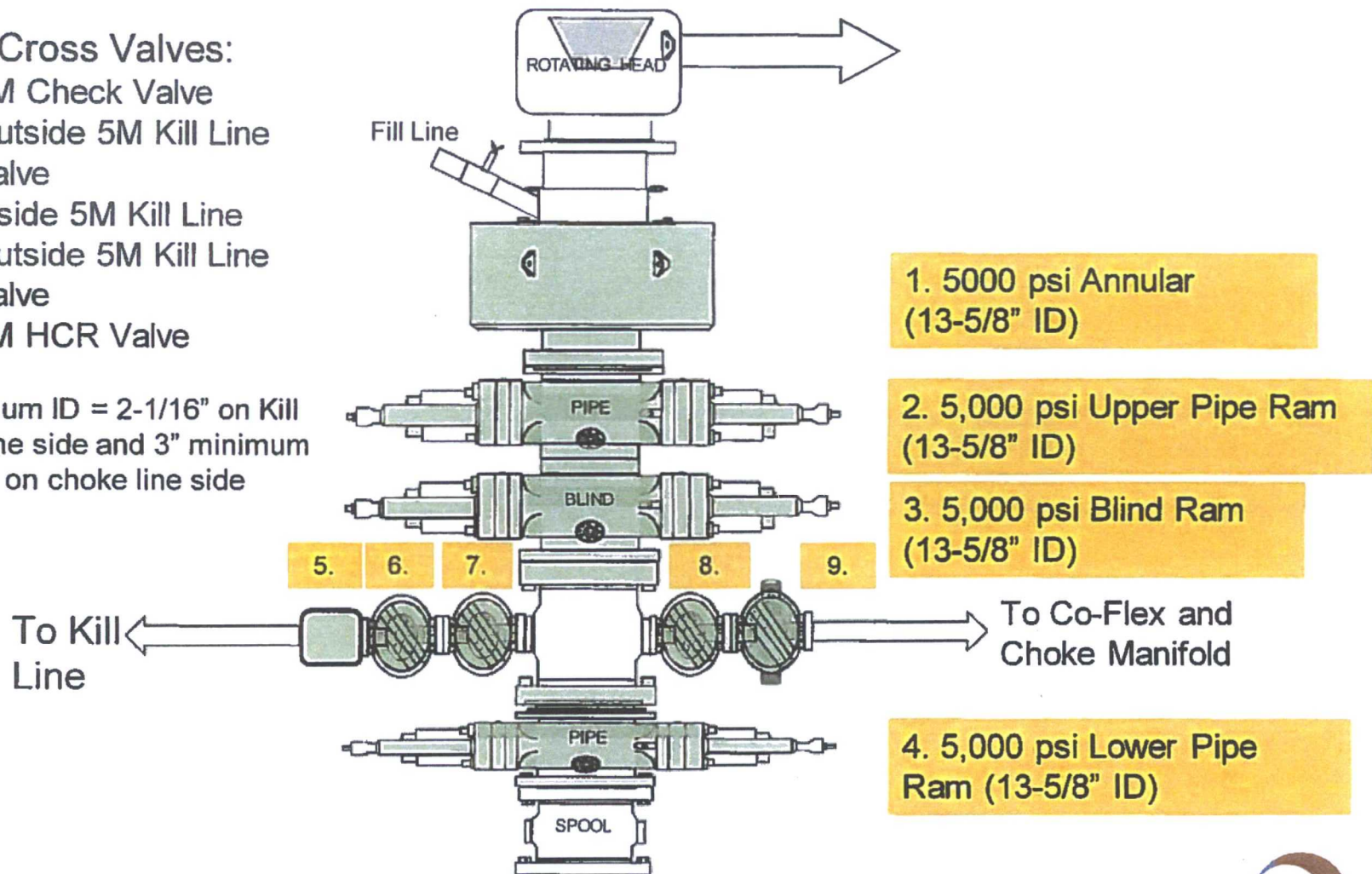


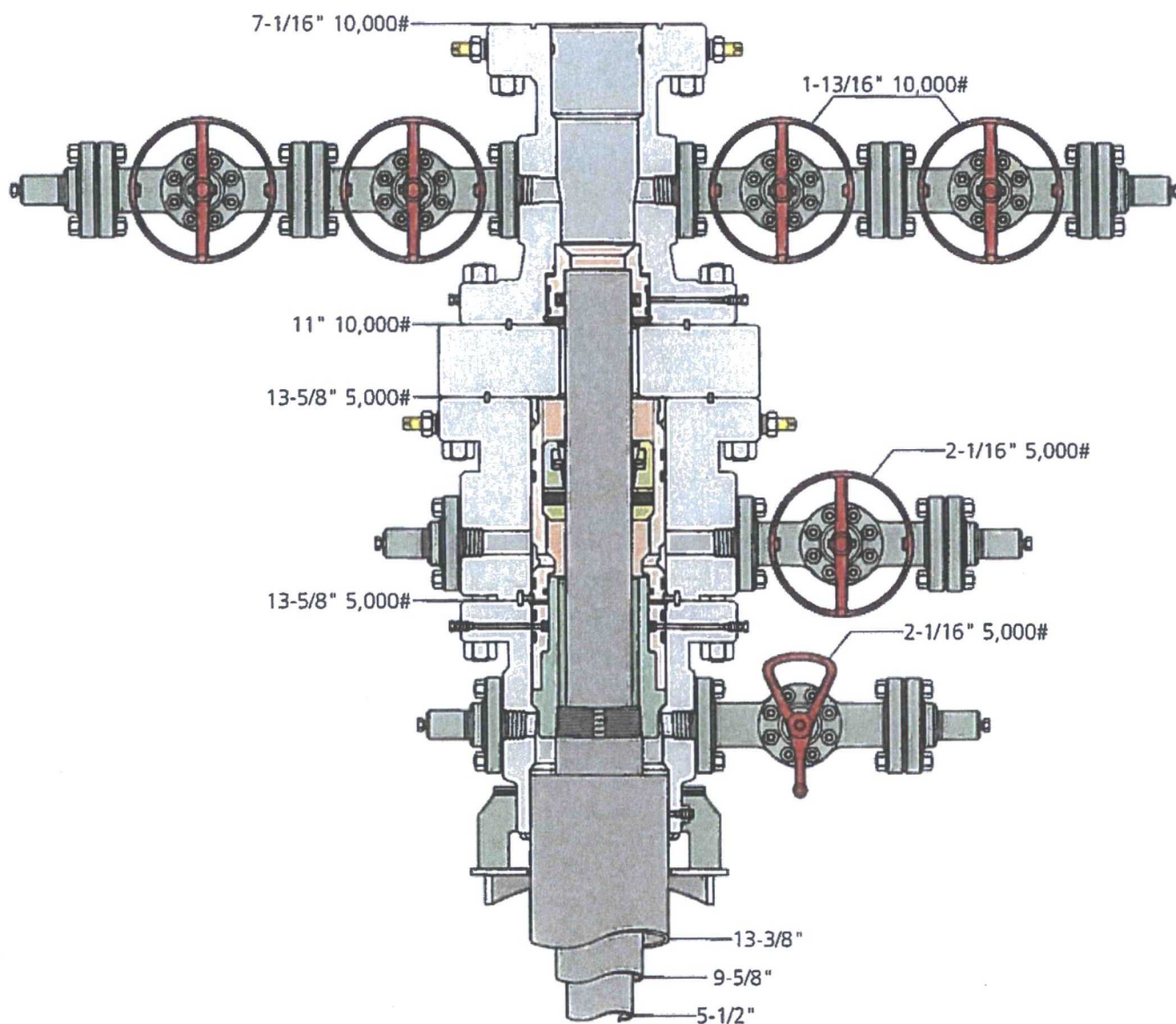
# 5M BOP Stack

## Mud Cross Valves:

5. 5M Check Valve
6. Outside 5M Kill Line Valve
7. Inside 5M Kill Line Valve
8. Outside 5M Kill Line Valve
9. 5M HCR Valve

\*Minimum ID = 2-1/16" on Kill Line side and 3" minimum ID on choke line side





13" 5K MBS SL2 Wellhead



Scale	Jeanette	Date	7-12-16	Working Pressure	#	J-9786-4
-------	----------	------	---------	------------------	---	----------



## OXY's Minimum Design Criteria

Burst, Collapse, and Tensile SF are calculated using Landmark's Stress Check (Casing Design) software. A sundry will be requested if any lesser grade or different size casing is substituted.

### 1) Casing Design Assumptions

#### a) Burst Loads

##### CSG Test (Surface)

- Internal: Displacement fluid + pressure required to comply with regulatory casing test pressures. This will comply with both Onshore Oil and Gas Order No. 2 and 19.15.16 of the OCD Rules.
- External: Pore pressure in open hole.

##### CSG Test (Intermediate)

- Internal: Displacement fluid + pressure required to comply with regulatory casing test pressures. This will comply with both Onshore Oil and Gas Order No. 2 and 19.15.16 of the OCD Rules.
- External: Mud Weight to TOC, cement mix water gradient (8.4 ppg) below TOC, and pore pressure in open hole.

##### CSG Test (Production)

- Internal:
  - For Drilling: Displacement fluid + pressure required to comply with regulatory casing test pressures. This will comply with both Onshore Oil and Gas Order No. 2 and 19.15.16 of the OCD Rules.
  - For Production: The design pressure test should be the greater of (1) the planned test pressure prior to stimulation down the casing. (2) the regulatory test pressure, and (3) the expected gas lift system pressure. The design test fluid should be the fluid associated with pressure test having the greatest pressure.
- External:
  - For Drilling: Mud Weight to TOC, cement mix water gradient (8.4 ppg) below TOC, and pore pressure in open hole.
  - For Production: Mud base-fluid density to TOC, cement mix water gradient (8.4 ppg) below TOC, and pore pressure in open hole.

##### Gas Column (Surface)

- Internal: Assumes a full column of gas in the casing with a Gas/Oil Gradient of 0.1 psi/ft in the absence of better information. It is limited to the controlling pressure based on the fracture pressure at the shoe or the maximum expected pore pressure within the next drilling interval, whichever results in a lower surface pressure.
- External: Fluid gradient below TOC, pore pressure from the TOC to the Intermediate CSG shoe (if applicable), and MW of the drilling mud that was in the hole when the CSG was run from Intermediate CSG shoe to surface.

##### Bullheading (Surface / Intermediate)

- Internal: The string must be designed to withstand a pressure profile based on the fracture pressure at the casing shoe with a column of water above the shoe plus an additional surface pressure (in psi) of  $0.02 \times MD$  of the shoe to account for pumping friction pressure.
- External: Mud weight to TOC, cement mix water gradient (8.4 ppg) below TOC, and pore pressure in open hole.



• **Gas Kick (Intermediate)**

- The string must be designed to at least a gas kick load case unless the rig is unable to detect a kick. For the gas kick load case, the internal pressure profile must be based on a minimum volume of 50 bbl or the minimum kick detection capability of the rig, whichever is greater, and a kick intensity of 2.0 ppg for Class 1, 1.0 ppg of Class 2, and 0.5 ppg for Class 3 and 4 wells.
- Internal: Influx depth of the maximum pore pressure of 0.55 "gas kick gravity" of gas to surface while drilling the next hole section.
- External: Mud weight to the TOC, cement mix water gradient below TOC, and pore pressure in open hole.

**Tubing Leak Near Surface While Producing (Production)**

- Internal: SITP plus a packer fluid gradient to the shoe or top of packer.
- External: Mud base-fluid density to TOC, cement mix water gradient (8.4 ppg) below TOC, and pore pressure in open hole.

**Tubing Leak Near Surface While Stimulating (Production)**

- Internal: Surface pressure or pressure-relief system pressure, whichever is lower plus packer fluid gradient.
- External: Mud base-fluid density to TOC, cement mix water gradient (8.4 ppg) below TOC, and pore pressure in open hole.

**Injection / Stimulation Down Casing (Production)**

- Internal: Surface pressure plus injection fluid gradient.
- External: Mud base-fluid density to TOC, cement mix water gradient (8.4 ppg) below TOC, and pore pressure in open hole.

**b) Collapse Loads**

**Lost Circulation (Surface / Intermediate)**

- Internal: Lost circulation at the TD of the next hole section, and the fluid level falls to a depth where the hydrostatic of the mud equals pore pressure at the depth of the lost circulation zone.
- External: MW of the drilling mud that was in the hole when the casing was run.

**Cementing (Surface / Intermediate / Production)**

- Internal: Displacement fluid density.
- External: Mud weight from TOC to surface and cement slurry weight from TOC to casing shoe.

**Full Evacuation (Production)**

- Internal: Full void pipe.
- External: MW of drilling mud in the hole when the casing was run.

**c) Tension Loads**

**Running Casing (Surface / Intermediate / Production)**

- Axial: Buoyant weight of the string plus the lesser of 100,000 lb or the string weight in air.

**Green Cement (Surface / Intermediate / Production)**

- Axial: Buoyant weight of the string plus cement plug bump pressure load.

# PERFORMANCE DATA

TMK UP DQX  
Technical Data Sheet

5.500 in

20.00 lbs/ft

P-110

## Tubular Parameters

Size	5.500	in	Minimum Yield	110,000	psi
Nominal Weight	20.00	lbs/ft	Minimum Tensile	125,000	psi
Grade	P-110		Yield Load	641,000	lbs
PE Weight	19.81	lbs/ft	Tensile Load	729,000	lbs
Wall Thickness	0.361	in	Min. Internal Yield Pressure	12,600	psi
Nominal ID	4.778	in	Collapse Pressure	11,100	psi
Drift Diameter	4.653	in			
Nom. Pipe Body Area	5.828	in <sup>2</sup>			

## Connection Parameters

Connection OD	6.050	in
Connection ID	4.778	in
Make-Up Loss	4.122	in
Critical Section Area	5.828	in <sup>2</sup>
Tension Efficiency	100.0	%
Compression Efficiency	100.0	%
Yield Load In Tension	641,000	lbs
Min. Internal Yield Pressure	12,600	psi
Collapse Pressure	11,100	psi

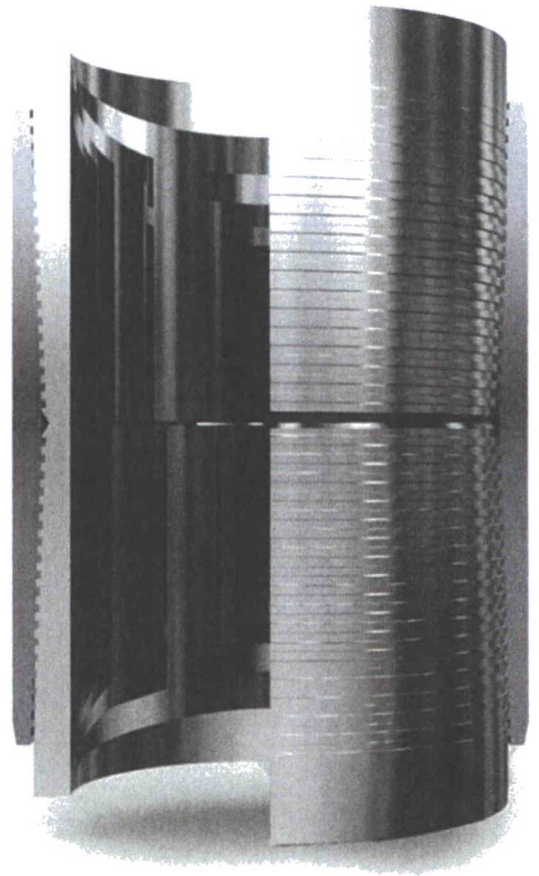
## Make-Up Torques

Min. Make-Up Torque	11,600	ft-lbs
Opt. Make-Up Torque	12,900	ft-lbs
Max. Make-Up Torque	14,100	ft-lbs
Yield Torque	20,600	ft-lbs

Printed on: July-29-2014

### NOTE

The content of this Technical Data Sheet is for general information only and does not guarantee performance or imply fitness for a particular purpose, which only a competent drilling professional can determine considering the specific installation and operation parameters. Information that is printed or downloaded is no longer controlled by TMK IPSCO and might not be the latest information. Anyone using the information herein does so at their own risk. To verify that you have the latest TMK IPSCO technical information, please contact TMK IPSCO Technical Sales toll-free at 1-888-256-2000.



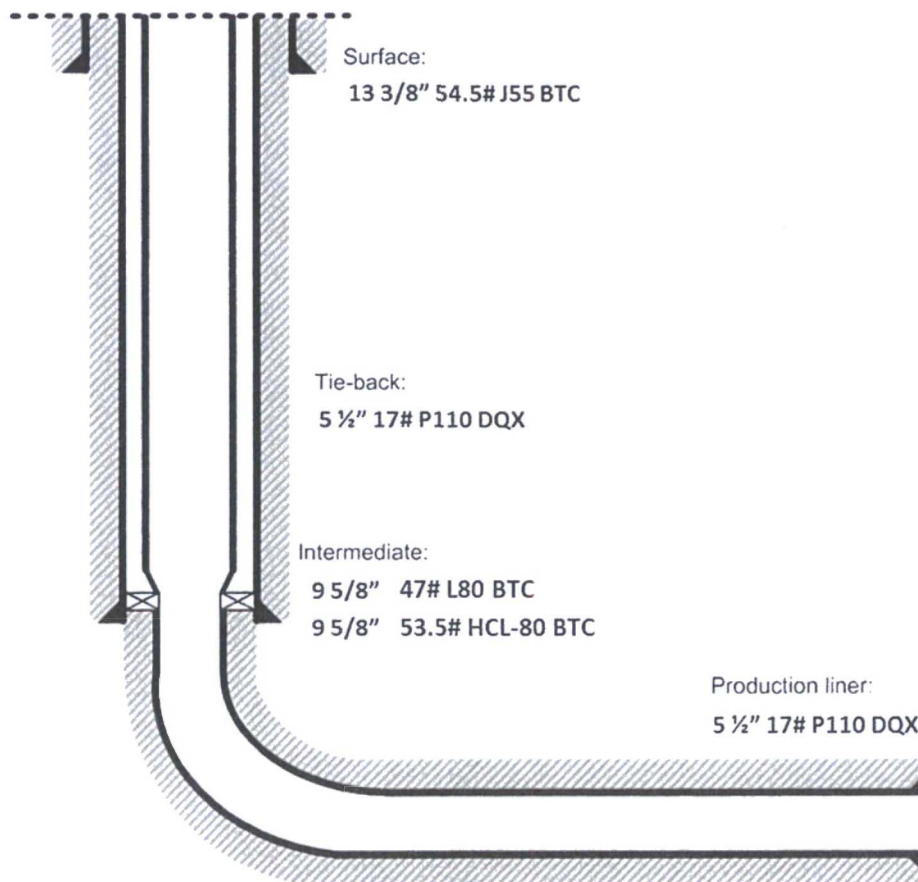
**OXY USA Inc.**  
**Mesa Verde 17-8 Federal Com #6H**

Below is a summary that describes the general operational steps to drill and complete this well:

- Drill 17-1/2" hole x 13-3/8" casing for surface section. Cement to surface.
- Drill 12-1/4" hole x 9-5/8" casing for intermediate section. Cement to surface.
- Drill 8-1/2" hole x 5-1/2" liner for production section. Cement to top of liner, 100' inside 9-5/8" shoe.
- Release drilling rig from location.
- Move in workover rig and run a 5-1/2" 17# P110 DQX tie-back frack string and seal assembly (see connection specs below). Tie into liner hanger Polished Bore Receptacle (PBR) with seal assembly.
- Pump hydraulic fracture job.
- Flowback and produce well.

When a decision is made to develop a secondary bench from this wellbore, a workover rig will be moved to location. The workover rig will then retrieve the tie-back frack string and seal assembly before temporarily abandoning the initial lateral.

General well schematic:





# OXY USA Inc. - Mesa Verde 17-8 Federal Com #6H

## 1. Geologic Formations

TVD of target	10603'	Pilot Hole Depth	N/A
MD at TD:	20635'	Deepest Expected fresh water:	942'

## Delaware Basin

Formation	TVD - RKB	Expected Fluids
Rustler	942	
Salado	1028	
Castile	3336	
Lamar/Delaware	4651	Oil/Gas
Bell Canyon*	4666	Water/Oil/Gas
Cherry Canyon*	5518	Oil/Gas
Brushy Canyon*	6935	Oil/Gas
Bone Spring	8503	Oil/Gas
1st Bone Spring	9547	Oil/Gas
<b>2nd Bone Spring</b>	<b>9938</b>	<b>Oil/Gas</b>
3rd Bone Spring	10833	Oil/Gas

\*H<sub>2</sub>S, water flows, loss of circulation, abnormal pressures, etc.

## 2. Casing Program

Hole Size (in)	Casing Interval		Csg. Size (in)	Weight (lbs)	Grade	Conn.	SF Collapse	SF Burst	Buoyant	Buoyant
	From (ft)	To (ft)							Body SF Tension	Joint SF Tension
17.5	0	993	13.375	54.5	J55	BTC	2.19	1.31	2.41	2.59
12.25	0	7500	9.625	47	L80	BTC	1.21	1.43	1.84	1.93
12.25	7500	9974	9.625	47	HPL80	BTC	1.19	1.48	3.54	4.39
8.5	9874	20635	5.5	20	P-110	DQX	1.98	1.20	2.31	2.54

All casing strings will be tested in accordance with Onshore Oil and Gas Order #2 III.B.1.h

\*Oxy requests the option to set casing shallower yet still below the salts if losses or hole conditions require this. Cement volumes may be adjusted if casing is set shallower and a DV tool will be run in case a contingency second stage is required for cement to reach surface. If cement circulated to surface during first stage we will drop a cancellation cone and not pump the second stage.

	Y or N
Is casing new? If used, attach certification as required in Onshore Order #1	Y
Does casing meet API specifications? If no, attach casing specification sheet.	Y
Is premium or uncommon casing planned? If yes attach casing specification sheet.	Y
Does the above casing design meet or exceed BLM's minimum standards? If not provide justification (loading assumptions, casing design criteria).	Y

**OXY USA Inc. - Mesa Verde 17-8 Federal Com #6H**

Will the intermediate pipe be kept at a minimum 1/3 fluid filled to avoid approaching the collapse pressure rating of the casing?	Y
Is well located within Capitan Reef?	N
If yes, does production casing cement tie back a minimum of 50' above the Reef?	
Is well within the designated 4 string boundary.	
Is well located in SOPA but not in R-111-P?	N
If yes, are the first 2 strings cemented to surface and 3 <sup>rd</sup> string cement tied back 500' into previous casing?	
Is well located in R-111-P and SOPA?	N
If yes, are the first three strings cemented to surface?	
Is 2 <sup>nd</sup> string set 100' to 600' below the base of salt?	
Is well located in high Cave/Karst?	N
If yes, are there two strings cemented to surface?	
(For 2 string wells) If yes, is there a contingency casing if lost circulation occurs?	
Is well located in critical Cave/Karst?	N
If yes, are there three strings cemented to surface?	

**3. Cementing Program**

Casing	# Sks	Wt. lb/ gal	Yld ft3/ sack	H2O gal/sk	500# Comp. Strength (hours)	Slurry Description
Surface	794	14.8	1.35	6.53	6:50	Class C Cement, Accelerator
Production	1553	10.2	3.05	15.63	15:07	Class C Cement, Retarder
Casing	239	13.2	1.65	8.45	12:57	Class H Cement, Retarder, Dispersant, Salt
DV/ECP Tool @ 4702 (We request the option to cancel the second stage if cement is circulated to surface during the first stage of cement operations)						
2nd Stage	1146	12.9	1.85	9.86	12:44	Class C Cement, Accelerator, Retarder
Production	265	14.8	1.33	6.34	6:31	Class C cement
Casing						
Production	1740	13.2	1.631	8.37	15:15	Class H Cement, Retarder, Dispersant, Salt
Liner						

Casing String	Top of Lead (ft)	Bottom of Lead (ft)	Top of Tail (ft)	Bottom of Tail (ft)	% Excess Lead	% Excess Tail
Surface	N/A	N/A	0	993		50%
Production Casing	0	8974	8974	9974	75%	20%
2nd Stage Production Casing	0	4202	4202	4702	75%	125%
Production Liner	N/A	N/A	9874	20635		15%



• **Cement Top and Liner Overlap**

- Oxy is requesting permission to have minimum fill of cement behind the 4-1/2" production liner to be 100 ft into previous casing string. The reason for this is so that we can come back and develop shallower benches from the same 9.625" mainbore in the future
- Our plan is to use a whipstock for our exit through the mainbore. Based on our lateral target, we are planning a whipstock cased/hole exit so that kick-off point will allow for roughly 10deg/100' doglegs needed for the curve
- Cement will be brought to the top of this liner hanger
- See attached for additional casing tie-back information

**4. Pressure Control Equipment**

BOP installed and tested before drilling which hole?	Size?	Min. Required WP	Type	✓	Tested to:
12.25" Intermediate	13-5/8"	5M	Annular	✓	70% of working pressure
			Blind Ram	✓	250/5000psi
			Pipe Ram		
			Double Ram	✓	
			Other*		

\*Specify if additional ram is utilized.

BOP/BOPE will be tested by an independent service company to 250 psi low and the high pressure indicated above per Onshore Order 2 requirements. The System may be upgraded to a higher pressure but still tested to the working pressure listed in the table above. If the system is upgraded all the components installed will be functional and tested.

Pipe rams will be operationally checked each 24 hour period. Blind rams will be operationally checked on each trip out of the hole. These checks will be noted on the daily tour sheets. Other accessories to the BOP equipment will include a Kelly cock and floor safety valve (inside BOP) and choke lines and choke manifold. See attached schematics.

	Formation integrity test will be performed per Onshore Order #2. On Exploratory wells or on that portion of any well approved for a 5M BOPE system or greater, a pressure integrity test of each casing shoe shall be performed. Will be tested in accordance with Onshore Oil and Gas Order #2 III.B.1.i.
	A variance is requested for the use of a flexible choke line from the BOP to Choke Manifold. See attached for specs and hydrostatic test chart.
Y	Are anchors required by manufacturer?
	A multibowl wellhead is being used. The BOP will be tested per Onshore Order #2 after



	<p>installation on the surface casing which will cover testing requirements for a maximum of 30 days. If any seal subject to test pressure is broken the system must be tested. We will test the flange connection of the wellhead with a test port that is directly in the flange. We are proposing that we will run the wellhead through the rotary prior to cementing surface casing as discussed with the BLM on October 8, 2015. See attached schematic.</p>
--	---

## 5. Mud Program

Depth		Type	Weight (ppg)	Viscosity	Water Loss
From (ft)	To (ft)				
0	993	EnerSeal (MMH)	8.4-8.6	40-60	N/C
993	4702	Brine	9.8-10.0	35-45	N/C
4702	9974	EnerSeal (MMH)	8.8-9.6	38-50	N/C
9974	20635	Oil-Based Mud	8.8-9.6	35-50	N/C

Sufficient mud materials to maintain mud properties and meet minimum lost circulation and weight increase requirements will be kept on location at all times. The following is a general list of products: Barite, Bentonite, Gypsum, Lime, Soda Ash, Caustic Soda, Nut Plug, Cedar Fiber, Cotton Seed Hulls, Drilling Paper, Salt Water Clay, CACL2. Oxy will use a closed mud system.

Oxy proposes to drill out the 13.375" surface casing shoe with a saturated brine system from 993' - 4702', which is the base of the salt system. At this point we will swap fluid systems to a high viscosity mixed metal hydroxide system. We will drill with this system to the Production Casing TD @ 9974'.

What will be used to monitor the loss or gain of fluid?	PVT/MD Totco/Visual Monitoring
---	--------------------------------

## 6. Logging and Testing Procedures

Logging, Coring and Testing.	
Yes	Will run GR from TD to surface (horizontal well – vertical portion of hole). Stated logs run will be in the Completion Report and submitted to the BLM.
No	Logs are planned based on well control or offset log information.
No	Drill stem test? If yes, explain
No	Coring? If yes, explain

Additional logs planned	Interval
No	Resistivity
No	Density
No	CBL
Yes	Mud log
No	PEX
	Intermediate Shoe - TD

## 7. Drilling Conditions

Condition	Specify what type and where?
BH Pressure at deepest TVD	5293 psi
Abnormal Temperature	No
BH Temperature at deepest TVD	165°F

Pump high viscosity sweeps as needed for hole cleaning. The mud system will be monitored visually/manually as well as with an electronic PVT. The necessary mud products for additional weight and fluid loss control will be on location at all times. Appropriately weighted mud will be used to isolate potential gas, oil, and water zones until such time as casing can be cemented into place for zonal isolation.

Hydrogen Sulfide (H2S) monitors will be installed prior to drilling out the surface shoe. If H2S is detected in concentrations greater than 100 ppm, the operator will comply with the provisions of Onshore Oil and Gas Order #6. If Hydrogen Sulfide is encountered, measured values and formations will be provided to the BLM.	
N	H2S is present
Y	H2S Plan attached

## 8. Other facets of operation

	Yes/No
Will the well be drilled with a walking/skidding operation? If yes, describe. <ul style="list-style-type: none"> <li>We plan to drill the two well pad in batch by section: all surface sections, intermediate sections and production sections. The wellhead will be secured with a night cap whenever the rig is not over the well.</li> </ul>	Yes
Will more than one drilling rig be used for drilling operations? If yes, describe.	No

Total estimated cuttings volume: 2353.3 bbls.

## 9. Company Personnel

**OXY USA Inc. - Mesa Verde 17-8 Federal Com #6H**

<u>Name</u>	<u>Title</u>	<u>Office Phone</u>	<u>Mobile Phone</u>
Ludwing Franco	Drilling Engineer	713-366-5174	832-523-6392
Tim Barnard	Drilling Engineer Team Lead	713-366-5706	281-740-3084
Amrut Athavale	Drilling Engineer Supervisor	713-350-4747	281-740-4448
Simon Benavides	Drilling Superintendent	713-522-8652	281-684-6897
Angie Contreras	Drilling & Completions Manager	713-497-2012	832-605-4882
Daniel Holderman	Drilling Manager	713-497-2006	832-525-9029



**OXY USA Inc**  
**APD ATTACHMENT: SPUDDER RIG DATA**

**OPERATOR NAME / NUMBER:** OXY USA Inc

**1. SUMMARY OF REQUEST:**

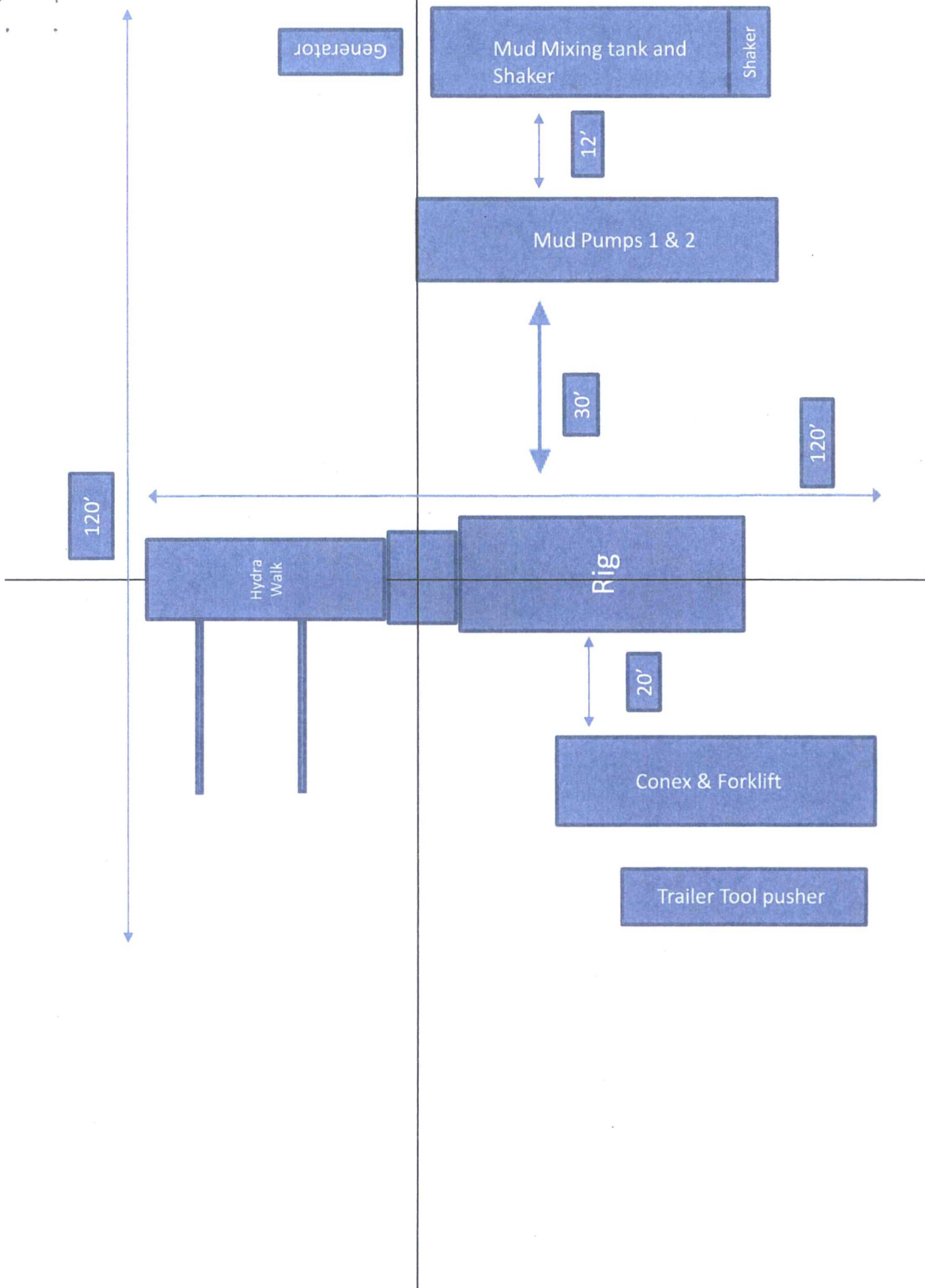
Oxy USA respectfully requests approval for the following operations for the surface hole in the drill plan:

1. Utilize a spudder rig to pre-set surface casing for time and cost savings.

**2. Description of Operations**

1. Spudder rig will move in to drill the surface hole and pre-set surface casing on the well.
  - a. After drilling the surface hole section, the spudder rig will run casing and cement following all of the applicable rules and regulations (OnShore Order 2, all COAs and NMOCD regulations).
  - b. The spudder rig will utilize fresh water-based mud to drill the surface hole to TD. Solids control will be handled entirely on a closed loop basis. No earth pits will be used.
2. The wellhead will be installed and tested as soon as the surface casing is cut off and the WOC time has been reached.
3. A blind flange at the same pressure rating as the wellhead will be installed to seal the wellbore. Pressure will be monitored with needle valves installed on two wingvalves.
  - a. A means for intervention will be maintained while the drilling rig is not over the well.
4. Spudder rig operations are expected to take 2-3 days per well on the pad.
5. The BLM will be contacted and notified 24 hours prior to commencing spudder rig operations.
6. Drilling operations will begin with a larger rig and a BOP stack equal to or greater than the pressure rating that was permitted will be nipped up and tested on the wellhead before drilling operations resume on each well.
  - a. The larger rig will move back onto the location within 90 days from the point at which the wells are secured and the spudder rig is moved off location.
  - b. The BLM will be contacted / notified 24 hours before the larger rig moves back on the pre-set locations.
7. Oxy will have supervision on the rig to ensure compliance with all BLM and NMOCD regulations and to oversee operations.
8. Once the rig is removed, Oxy will secure the wellhead area by placing a guard rail around the cellar area.

# Spudder Rig Layout



## **Mesa Verde Development – Surface Production Facilities – 02/13/2017**

### **CTB Site**

All wells will route to the Mesa Verde Unit CTB which will be composed of (3) tracts with the following dimensions: 600'x600', 200'x30', and 150'x150'.

Reference Plats:

(3) John West Surveying Company W.O. No: 16110946 Survey: 12/12/16 CAD: 1/13/17

### **Production Flowlines**

Each well will have (2) surface laid flowlines operating at less than 75% of the MAWP of the flowline per the survey plats from the well site to the CTB following access roads.

Reference plats per well APD package

### **Electrical Lines**

Power lines will be routed from PME to well sites and surface facilities per referenced survey plats.

Reference Plats:

(1) John West Surveying Company W.O. No: 16.11.0949 Survey: 12/15/16-1/3/2017 CAD: 1/24/17

(1) John West Surveying Company W.O. No: 16111047 Survey: 1/10/17 CAD: 2/01/17

### **Buried Lines (General)**

Mesa Verde development will have a 100' "pipeline corridor" that buried lines will be consolidated to where possible as to minimize disturbances. Pipelines within corridor are described below. Certain interconnections outside of the pipeline corridor are required but have been minimized.

Reference Plat:

(1) John West Surveying Company W.O. No: 16.11.0947 Survey: 12/13/16 CAD: 1/19/17 Rev: 2/03/17

### **Gas Lift Compressor Site, Suction, and Injection Lines**

Wells with gas lift as their artificial lift mechanism in the Mesa Verde development will be supported by a centralized gas lift compressor station. This gas lift compressor station will be located on a 400'x200' pad in Section 18 Township 24 South Range 32 East and will be fed by a buried 20" HDPE line, laid in the pipeline corridor, from the Mesa Verde unit CTB operating at less than 125 PSIG. The discharge of the compressors will feed into (1) 6" gas injection trunk line operating < 1,500 PSIG running the length of the pipeline corridor connecting to each well pad. An access road will be required to access this pad per the associated plat.

Reference Plat:

(1) John West Surveying Company W.O. No: 16.11.0947 Survey: 12/13/16 CAD: 1/19/17 Rev: 2/03/17

(2) John West Surveying Company W.O. No: 16110948 Survey: 12/14/16 CAD: 1/13/17

(1) John West Surveying Company W.O. No: 16111041 Survey: 1/4/17 CAD: 1/13/17

### **Salt Water Disposal**

Produced water will be pumped into (2) 16" HDPE buried lines operating at less than 300 PSIG in the pipeline corridor. This produced water line will also connect to the McCloy SWD and Bran SWD through routes outside of the pipeline corridor per the attached plats.

Reference Plats:

(1) John West Surveying Company W.O. No: 16.11.0947 Survey: 12/13/16 CAD: 1/19/17 Rev: 2/03/17

(1) John West Surveying Company W.O. No: 16110099 Survey: 2/2/16 CAD: 2/17/16

(1) John West Surveying Company W.O. No: 16110113 Survey: 2/5/16 CAD: 2/17/16

(4) John West Surveying Company W.O. No: 16110102 Survey: 2/3&4/16 CAD: 2/22/16



#### Oil Sales

Oil will be pumped into (1) 6" steel buried line operating at less than 750 PSIG in the pipeline corridor. This oil line will interconnect to the Mesa Verde oil gathering point through a route outside of the pipeline corridor per the attached plat.

Reference Plat:

(1) John West Surveying Company W.O. No: 16.11.0947 Survey: 12/13/16 CAD: 1/19/17 Rev: 2/03/17

(1) John West Surveying Company W.O. No: 16111047 Survey: 1/10/17 CAD: 2/01/17

#### Gas Sales

Gas will flow into (1) 20" HDPE buried line operating at less than 125 PSIG in the pipeline corridor. This gas line will interconnect to the Enlink (3<sup>rd</sup> Party Processor) tie-in point through a route outside of the pipeline corridor per the attached plat. This 20" HDPE line will also interconnect to the Sand Dunes development to provide more takeaway capacity. To allow movement of higher volumes of gas (1) 12" steel line operating less than 1,500 PSIG will also be installed along these routes.

Reference Plat:

(1) John West Surveying Company W.O. No: 16.11.0947 Survey: 12/13/16 CAD: 1/19/17 Rev: 2/03/17

(1) John West Surveying Company W.O. No: 17110042 Survey: 1/27/17 CAD: 2/1/17

Prepared by:  
Dave Andersen  
GRR Land Department

GRR, INC. WATER SOURCES  
FOR OXY CERTAIN POND LOCATIONS

08/26/2016

Pond Name	Water Source1	Water Source2	Water Source3	Water Source4
Cedar Canyon	<u>Mine Industrial</u>	<u>C-3478</u>	<u>C-2772</u>	<u>C-1360</u>
Corral Fly	<u>C-1360</u>	<u>C-1361</u>	<u>C-3358</u>	<u>C-3836</u>
Cypress	<u>Mine Industrial</u>	<u>C-3478</u>	<u>C-2772</u>	<u>C-1361</u>
Mesa Verde	<u>C-2571</u>	<u>C-2574</u>	<u>J-27</u>	<u>J-5</u>
Peaches	<u>C-906</u>	<u>C-3200</u>	<u>SP-55 &amp; SP-1279</u> <u>A</u>	<u>C-100</u>

## GRR Inc.

NMOSE WELL NUMBER	WELL COMMON NAME	LAND OWNERSHIP	GPS LOCATION
C-100	Tres Rios - Next to well shack	PRIVATE	32.201921° -104.254317°
C-100-A	Tres Rios - Center of turnaround	PRIVATE	32.201856° -104.254443°
C-272-B	Tres Rios - Northwest	PRIVATE	32.202315° -104.254812°
C-906	Whites City Commercial	PRIVATE	32.176949° -104.374371°
C-1246-AC & C-1246-AC-S	Lackey	PRIVATE	32.266978° -104.271212°
C-1886	1886 Tank	BLM	32.229316° -104.312930°
C-1083	Petska	PRIVATE	32.30904° -104.16979°
C-1142	Winston West	BLM	32.507845-104.177410
C-1360	ENG#1	PRIVATE	32.064922° -103.908818°
C-1361	ENG#2	PRIVATE	32.064908° -103.906266°
C-1573	Cooksey	PRIVATE	32.113463° -104.108092°
C-1575	ROCKHOUSE Ranch Well - Wildcat	BLM	32.493190° -104.444163°
C-2270	CW#1 (Oliver Kiehne)	PRIVATE	32.021440° -103.559208°
C-2242	Walterscheid	PRIVATE	32.39199° -104.17694°
C-2492POD2	Stacy Mills	PRIVATE	32.324203° -103.812472°
C-2569	Paduca well #2	BLM	32.160588 -103.742051
C-2569POD2	Paduca well replacement	BLM	32.160588 -103.742051
C-2570	Paduca (tank) well #4	BLM	32.15668 -103.74114
C-2571	Paduca (road) well	BLM	32.163993° -103.745457°
C-2572	Paduca well #6	BLM	32.163985 -103.7412
C-2573	Paduca (in the bush) well	BLM	32.16229 -103.74363
C-2574	Paduca well (on grid power)	BLM	32.165777° -103.747590°
C-2701	401 Water Station	BLM	32.458767° -104.528097°
C-2772	Mobley Alternate	BLM	32.305220° -103.852360°
C-3011	ROCKY ARROYO - MIDDLE	BLM	32.409046° -104.452045°
C-3060	Max Vasquez	PRIVATE	32.31291° -104.17033°
C-3095	ROCKHOUSE Ranch Well - North of Rockcrusher	PRIVATE	32.486794° -104.426227°
C-3200	Beard East	PRIVATE	32.168720 -104.276600
C-3260	Hayhurst	PRIVATE	32.227110° -104.150925°
C-3350	Winston Barn	PRIVATE	32.511871° -104.139094°
C-3358	Branson	PRIVATE	32.19214° -104.06201°
C-3363	Watts#2	PRIVATE	32.444637° -103.931313°
C-3453	ROCKY ARROYO - FIELD	PRIVATE	32.458657° -104.460804°
C-3478	Mobley Private	PRIVATE	32.294937° -103.888656°
C-3483pod1	ENG#3	BLM	32.065556° -103.894722°
C-3483pod3	ENG#5	BLM	32.06614° -103.89231°
C-3483POD4	CW#4 (Oliver Kiehne)	PRIVATE	32.021803° -103.559030°
C-3483POD5	CW#5 (Oliver Kiehne)	PRIVATE	32.021692° -103.560158°
C-3554	Jesse Baker #1 well	PRIVATE	32.071937° -103.723030°
C-3577	CW#3 (Oliver Kiehne)	PRIVATE	32.021773° -103.559738°
C-3581	ENG#4	BLM	32.066083° -103.895024°
C-3595	Oliver Kiehne house well #2	PRIVATE	32.025484° -103.682529°
C-3596	CW#2 (Oliver Kiehne)	PRIVATE	32.021793° -103.559018°



## GRR Inc.

NMOSE WELL NUMBER	WELL COMMON NAME	LAND OWNERSHIP	GPS LOCATION
C-3614	Dale Hood #2 well	PRIVATE	32.449290° -104.214500°
C-3639	Jesse Baker #2 well	PRIVATE	32.073692° -103.727121°
C-3679	McCloy-Batty	PRIVATE	32.215790° -103.537690°
C-3689	Winston Barn_South	PRIVATE	32.511504° -104.139073°
C-3731	Ballard Construction	PRIVATE	32.458551° -104.144219°
C-3764	Watts#4	PRIVATE	32.443360° -103.942890°
C-3795	Beckham#6	BLM	32.023434° -103.321968°
C-3821	Three River Trucking	PRIVATE	32.34636° -104.21355
C-3824	Collins	PRIVATE	32.224053° -104.090129°
C-3829	Jesse Baker #3 well	PRIVATE	32.072545° -103.722258°
C-3830	Paduca	BLM	32.156400° -103.742060°
C-3836	Granger	PRIVATE	32.10073° -104.10284°
C-384	ROCKHOUSE Ranch Well - Rockcrusher	PRIVATE	32.481275° -104.420706°
C-459	Walker	PRIVATE	32.3379° -104.1498°
C-496pod2	Munoz #3 Trash Pit Well	PRIVATE	32.34224° -104.15365°
C-496pod3&4	Munoz #2 Corner of Porter & Derrick	PRIVATE	32.34182° -104.15272°
C-552	Dale Hood #1 well	PRIVATE	32.448720° -104.214330°
C-764	Mike Vasquez	PRIVATE	32.230553° -104.083518°
C-766(old)	Grandi	PRIVATE	32.32352° -104.16941°
C-93-S	Don Kidd well	PRIVATE	32.344876 -104.151793
C-987	ROCKY ARROYO - HOUSE	PRIVATE	32.457049° -104.461506°
C-98-A	Bindel well	PRIVATE	32.335125° -104.187255°
CP-1170POD1	Beckham#1	PRIVATE	32.065889° -103.312583°
CP-1201	Winston Ballard	BLM	32.580380° -104.115980°
CP-1202	Winston Ballard	BLM	32.538178° -104.046024°
CP-1231	Winston Ballard	PRIVATE	32.618968° -104.122690°
CP-1263POD5	Beckham#5	PRIVATE	32.065670° -103.307530°
CP-1414	Crawford #1	PRIVATE	32.238380° -103.260890°
CP-1414 POD 1	RRR	PRIVATE	32.23911° -103.25988°
CP-1414 POD 2	RRR	PRIVATE	32.23914° -103.25981°
CP-519	Bond_Private	PRIVATE	32.485546 -104.117583
CP-556	Jimmy Mills (Stacy)	STATE	32.317170° -103.495080°
CP-626	Oi Loco (W)	STATE	32.692660° -104.068064°
CP-626-S	Beach Exploration/ Oi Loco (E)	STATE	32.694229° -104.064759°
CP-73	Laguna #1	BLM	32.615015° -103.747615°
CP-74	Laguna #2	BLM	32.615255° -103.747688°
CP-741	Jimmy Richardson	BLM	32.61913° -104.06101°
CP-742	Jimmy Richardson	BLM	32.614061° -104.017211°
CP-742	Hidden Well	BLM	32.614061 -104.017211
CP-745	Leaning Tower of Pisa	BLM	32.584619° -104.037179°
CP-75	Laguna #3	BLM	32.615499° -103.747715°
CP-924	Winston Ballard	BLM	32.545888° -104.110114°
CP-926	Winchester well (Winston)	BLM	32.601125° -104.128358°

## GRR Inc.

NMOSE WELL NUMBER	WELL COMMON NAME	LAND OWNERSHIP	GPS LOCATION
J-27	Beckham	PRIVATE	32.020403° -103.299333°
J-5	EPNG Jal Well	PRIVATE	32.050232° -103.313117°
J-33	Beckham	PRIVATE	32.016443° -103.297714°
J-34	Beckham	PRIVATE	32.016443° -103.297714°
J-35	Beckham	PRIVATE	32.016443° -103.297714°
L-10167	Angell Ranch well	PRIVATE	32.785847° -103.644705°
L-10613	Northcutt3 (2nd House well)	PRIVATE	32.687922° -103.472452°
L-11281	Northcutt4	PRIVATE	32.687675° -103.471512°
L-12459	Northcutt1 (House well)	PRIVATE	32.689498° -103.472697°
L-12462	Northcutt8 Private Well	PRIVATE	32.686238° -103.435409°
L-13049	EPNG Maljamar well	PRIVATE	32.81274° -103.67730°
L-13129	Pearce State	STATE	32.726305° -103.553172°
L-13179	Pearce Trust	STATE	32.731304° -103.548461°
L-13384	Northcutt7 (State) CAZA	STATE	32.694651° -103.434997°
L-1880S-2	HB Intrepid well #7	PRIVATE	32.842212° -103.621299°
L-1880S-3	HB Intrepid well #8	PRIVATE	32.852415° -103.620405°
L-1881	HB Intrepid well #1	PRIVATE	32.829124° -103.624139°
L-1883	HB Intrepid well #4	PRIVATE	32.828041° -103.607654°
L-3887	Northcutt2 (Tower or Pond well)	PRIVATE	32.689036° -103.472437°
L-5434	Northcutt5 (State)	STATE	32.694074° -103.405111°
L-5434-S	Northcutt6 (State)	STATE	32.693355° -103.407004°
RA-14	Horner Can	PRIVATE	32.89348° -104.37208°
RA-1474	Irvin Smith	PRIVATE	32.705773° -104.393043°
RA-1474-B	NLake WS / Jack Clayton	PRIVATE	32.561221° -104.293095°
RA-9193	Angell Ranch North Hummingbird	PRIVATE	32.885162° -103.676376°
SP-55 & SP-1279-A	Blue Springs Surface POD	PRIVATE	32.181358° -104.294009°
SP-55 & SP-1279 (Bounds)	Bounds Surface POD	PRIVATE	32.203875° -104.247076°
SP-55 & SP-1279 (Wilson)	Wilson Surface POD	PRIVATE	32.243010° -104.052197°
City Treated Effluent	City of Carlsbad Waste Treatment Plant	PRIVATE	32.411122° -104.177030°
Mine Industrial	Mosaic Industrial Water	PRIVATE	32.370286° -103.947839°
Mobley State Well (NO OSE)	Mobley Ranch	STATE	32.308859° -103.891806°
EPNG Industrial	Monument Water Well Pipeline (Oil Center, Eunice)	PRIVATE	32.512943° -103.290300°
MCOX Commercial	Matt Cox Commercial	PRIVATE	32.529431° -104.188017°
AMAX Mine Industrial	Mosaic Industrial Water	N/A	VARIOUS TAPS
WAG Mine Industrial	Mosaic Industrial Water	N/A	VARIOUS TAPS
HB Mine Industrial	Intrepid Industrial Water	N/A	VARIOUS TAPS

## **Mesquite**

### **Cedar Canyon**

Major Source: C464 (McDonald) Sec. 13 T24S R28E

Secondary Source: C-00738 (McDonald/Faulk) Sec. 12 T24S R28E

### **Corral Fly – South of Cedar Canyon**

Major Source: C464 (McDonald) Sec. 13 T24S R28E

Secondary Source: C-00738 (McDonald/Faulk) Sec. 12 T24S R28E

### **Cypress – North of Cedar Canyon**

Major Source: Caviness B: C-501-AS2 Sec 23 T28S R15E

Secondary Source: George Arnis; C-1303

### **Sand Dunes – new frac pond**

Major Source: 128 Fresh Water Pond (Mesquite/Mosaic) – located at MM 4 on 128; 240,000 bbl pond

Secondary Source: George Arnis; C-1303

### **Mesa Verde – east of Sand Dunes**

Major Source: 128 Fresh Water Pond (Mesquite/Mosaic) – located at MM 4 on 128; 240,000 bbl pond

Secondary Source: Unknown at this time; needs coordinates to determine secondary source

### **Smokey Bits/Ivove/Misty – had posiden tanks before**

Major Source: Unknown at this time; need coordinates to determine major source

Secondary Source: Unknown at this time; needs coordinates to determine secondary source

### **Red Tank/Lost Tank**

Major Source: Unknown at this time; need coordinates to determine major source

Secondary Source: Unknown at this time; needs coordinates to determine secondary source

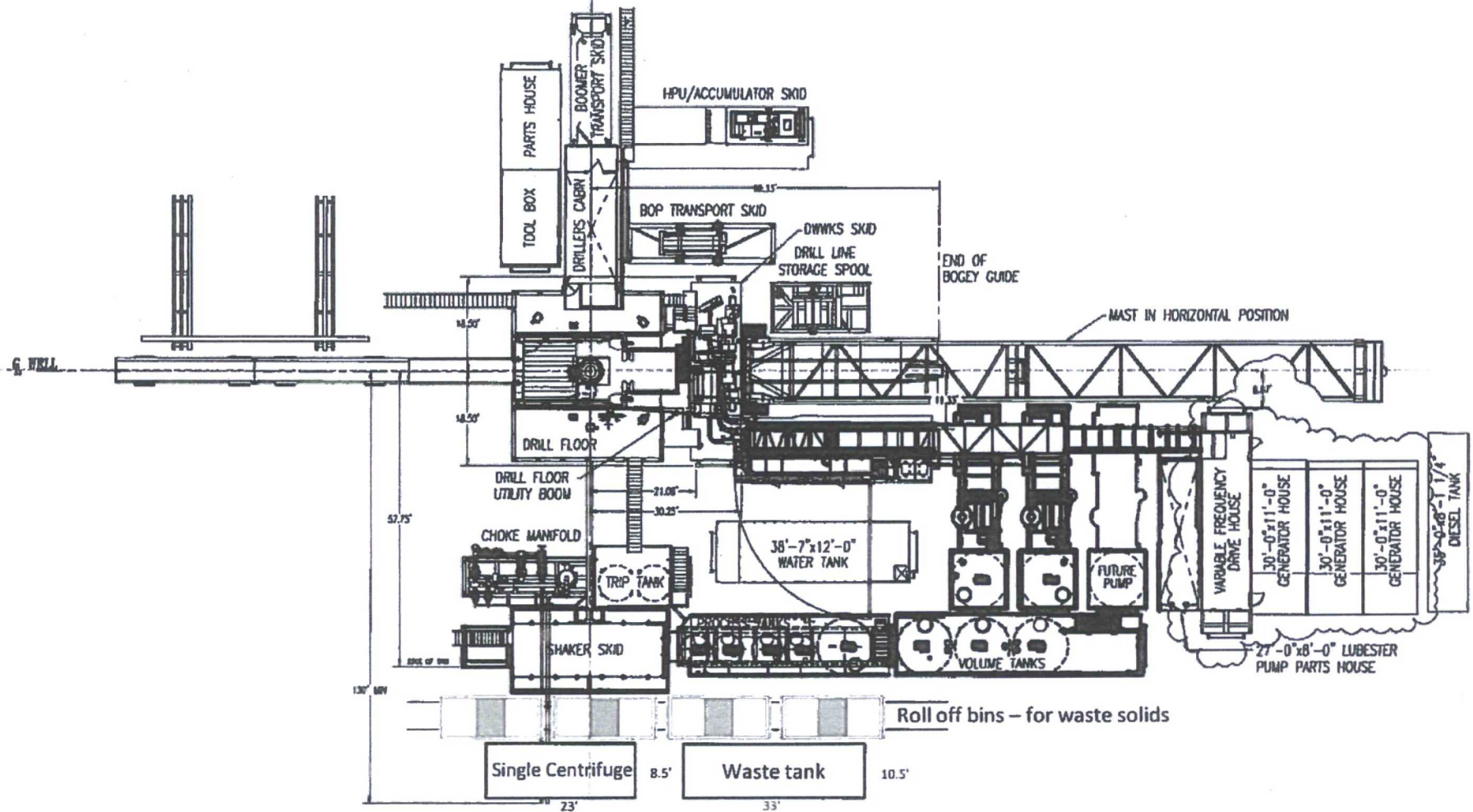
### **Peaches**

Major Source: Unknown at this time; need coordinates to determine major source

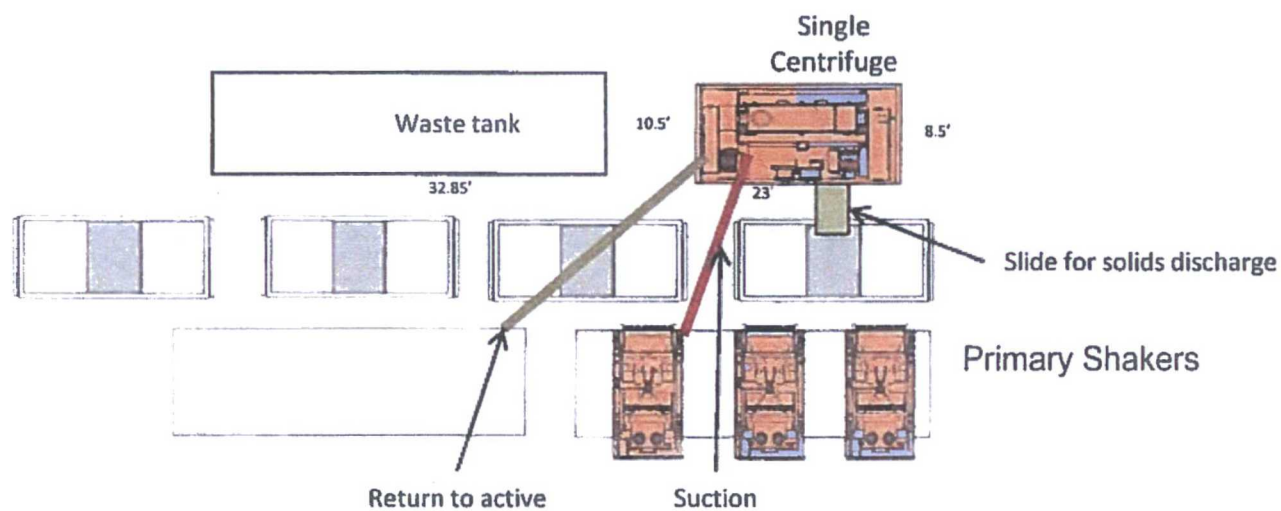
Secondary Source: Unknown at this time; needs coordinates to determine secondary source



Oxy Single Centrifuge  
Closed Loop System – New  
Mexico Flex III  
May 28, 2013



Oxy



Oxy Single Centrifuge  
Closed Loop System – New  
Mexico Flex III  
May 28, 2013