

District I
1625 N. French Dr., Hobbs, NM 88240
Phone: (575) 393-6161 Fax: (575) 393-0720
District II
811 S. First St., Artesia, NM 88210
Phone: (575) 748-1283 Fax: (575) 748-9720
District III
1000 Rio Brazos Road, Aztec, NM 87410
Phone: (505) 334-6178 Fax: (505) 334-6170
District IV
1220 S. St. Francis Dr., Santa Fe, NM 87505
Phone: (505) 476-3460 Fax: (505) 476-3462

State of New Mexico
Energy, Minerals & Natural Resources Department
OIL CONSERVATION DIVISION
1220 South St. Francis Dr.
Santa Fe, NM 87505

Form C-102
Revised August 1, 2011
Submit one copy to appropriate
District Office

HOBBS OCD
DEC 26 2017
RECEIVED

☐ AMENDED REPORT

WELL LOCATION AND ACREAGE DEDICATION PLAT

¹ API Number 30-025- 44386	² Pool Code 96111	³ Pool Name SWD;Grayburg-San Andres-Glorieta
⁴ Property Code 320649	⁵ Property Name Snyder SWD 28	
⁷ OGRID No. 372311	⁸ Operator Name Goodnight Midstream Permian, LLC	⁶ Well Number 1
		⁹ Elevation 3,606.3'

¹⁰ Surface Location

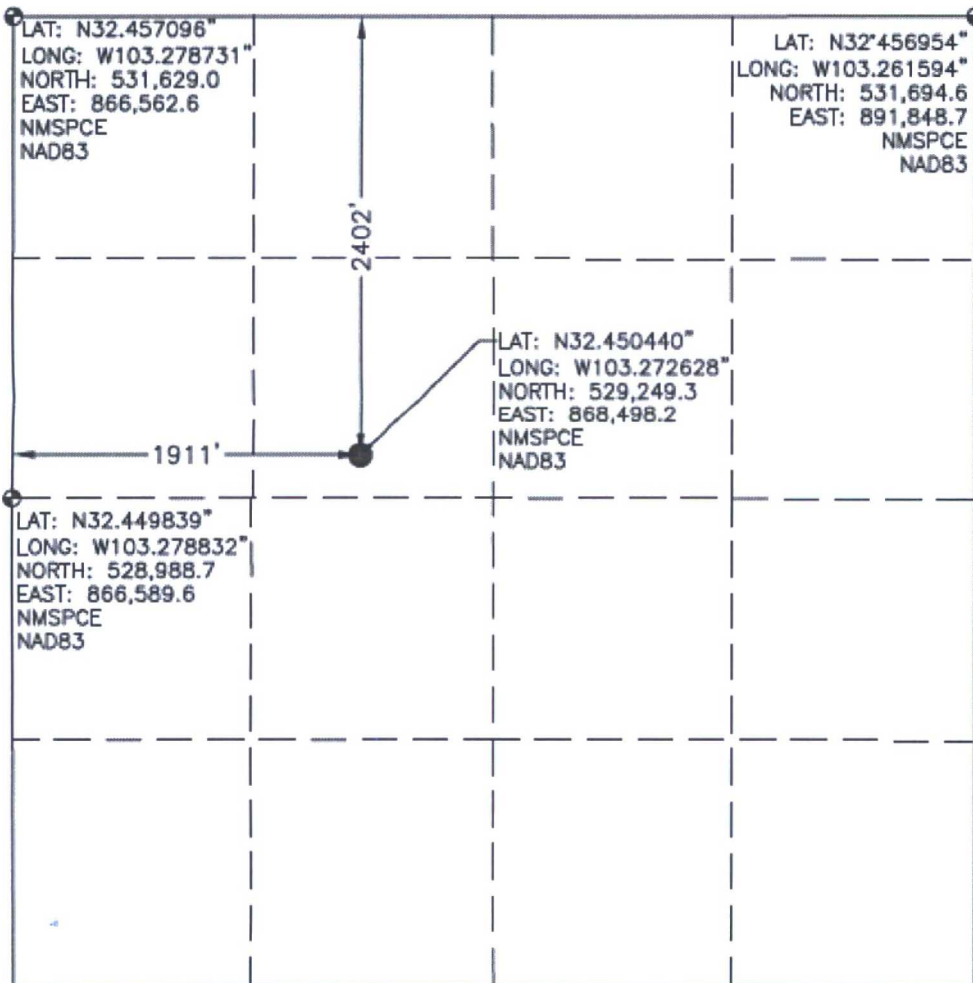
UL or lot no.	Section	Township	Range	Lot Idn	Feet from the	North/South line	Feet from the	East/West line	County
F	28	21S	36E		2,402'	NORTH	1,911'	WEST	LEA

¹¹ Bottom Hole Location If Different From Surface

UL or lot no.	Section	Township	Range	Lot Idn	Feet from the	North/South line	Feet from the	East/West line	County

¹² Dedicated Acres	¹³ Joint or Infill	¹⁴ Consolidation Code	¹⁵ Order No.

No allowable will be assigned to this completion until all interests have been consolidated or a non-standard unit has been approved by the division.



¹⁷ OPERATOR CERTIFICATION

I hereby certify that the information contained herein is true and complete to the best of my knowledge and belief, and that this organization either owns a working interest or unleased mineral interest in the land including the proposed bottom hole location or has a right to drill this well at this location pursuant to a contract with an owner of such a mineral or working interest, or to a voluntary pooling agreement or a compulsory pooling order heretofore entered by the division.

Brian Wood
Signature Date
Brian Wood
Printed Name
brian@permitswest.com
E-mail Address
(505) 466-8120

¹⁸ SURVEYOR CERTIFICATION

I hereby certify that the well location shown on this plat was plotted from field notes of actual surveys made by me or under my supervision, and that the same is true and correct to the best of my belief.

September 12, 2017
Date of Survey
Signature and Seal of Professional Surveyor

Alton S. Geisendorff Jr.
PROFESSIONAL SURVEYOR
16005
Certificate Number

CONDITIONS OF APPROVAL

API #	Operator	Well name & Number
30-025-44386	GOODNIGHT MIDSTREAM	SNYDER SWD 28 # 001

Applicable conditions of approval marked with **XXXXXX**

Administrative Orders Required

XXXXXXX	Will require administrative order for injection or disposal prior to injection or disposal

Other wells

Drilling

XXXXXXX	Once the well is spud, to prevent ground water contamination through whole or partial conduits from the surface, the operator shall drill without interruption through the fresh water zone or zones and shall immediately set in cement the water protection string

Casing

XXXXXXX	SURFACE & PRODUCTION CASING - Cement must circulate to surface --
XXXXXXX	Surface casing must be set 25' below top of Rustler Anhydrite in order to seal off protectable water

Lost Circulation

XXXXXXX	Must notify OCD Hobbs Office if lost circulation is encountered at 575-370-3186

Water flows

XXXXXXX	Must notify OCD Hobbs Office of any water flow in the Salado formation at 575-370-3186. Report depth and flow rate.

Stage Tool

XXXXXXX	Must notify OCD Hobbs Office prior to running Stage Tool at 575-370-3186
XXXXXXX	If using Stage Tool on Surface casing, Stage Tool must be greater than 350' and a minimum 200 feet above surface shoe.
XXXXXXX	When using a Stage Tool on Intermediate or Production Casing Stage must be a minimum of 50 feet below previous casing shoe.

Completion & Production

XXXXXXX	Will require a deviational survey with the C-105
	Must notify Hobbs OCD office prior to conducting MIT (575) 393-6161 ext. 114
	Must conduct & pass MIT prior to any injection