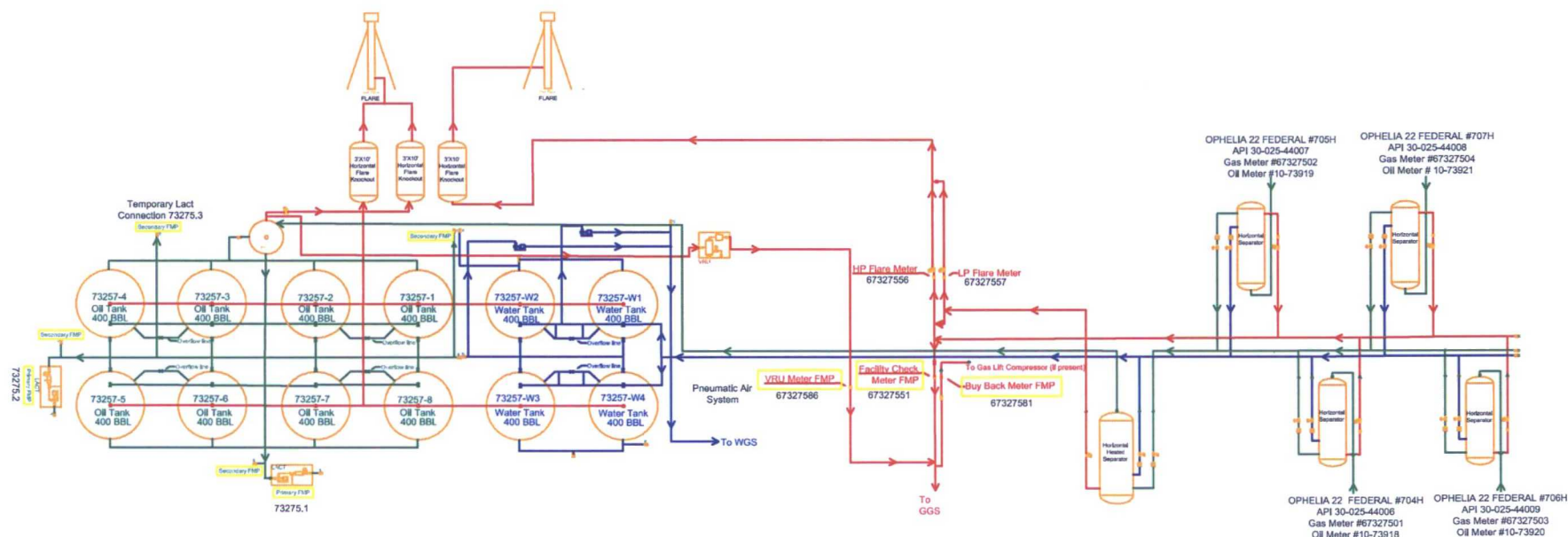
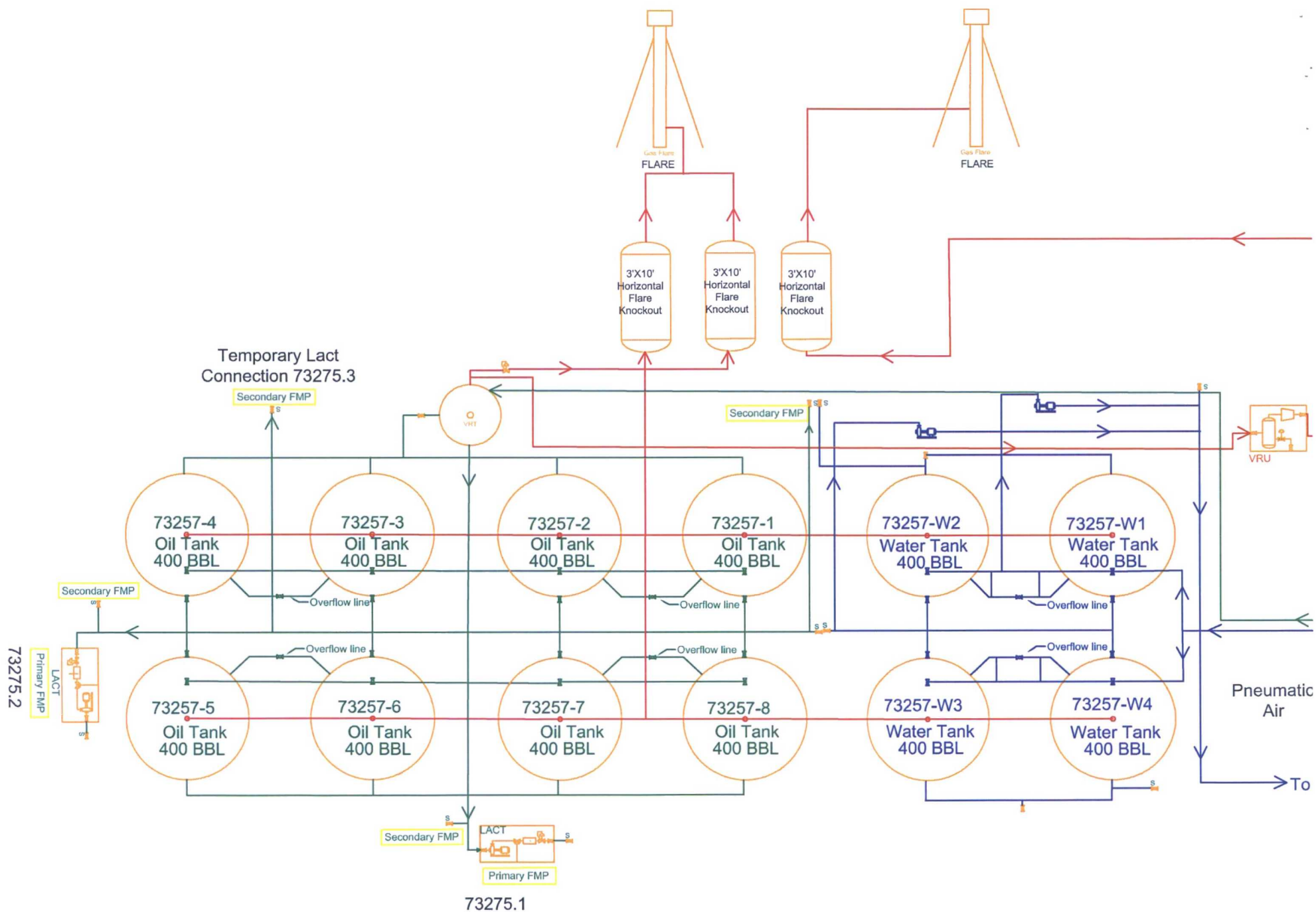


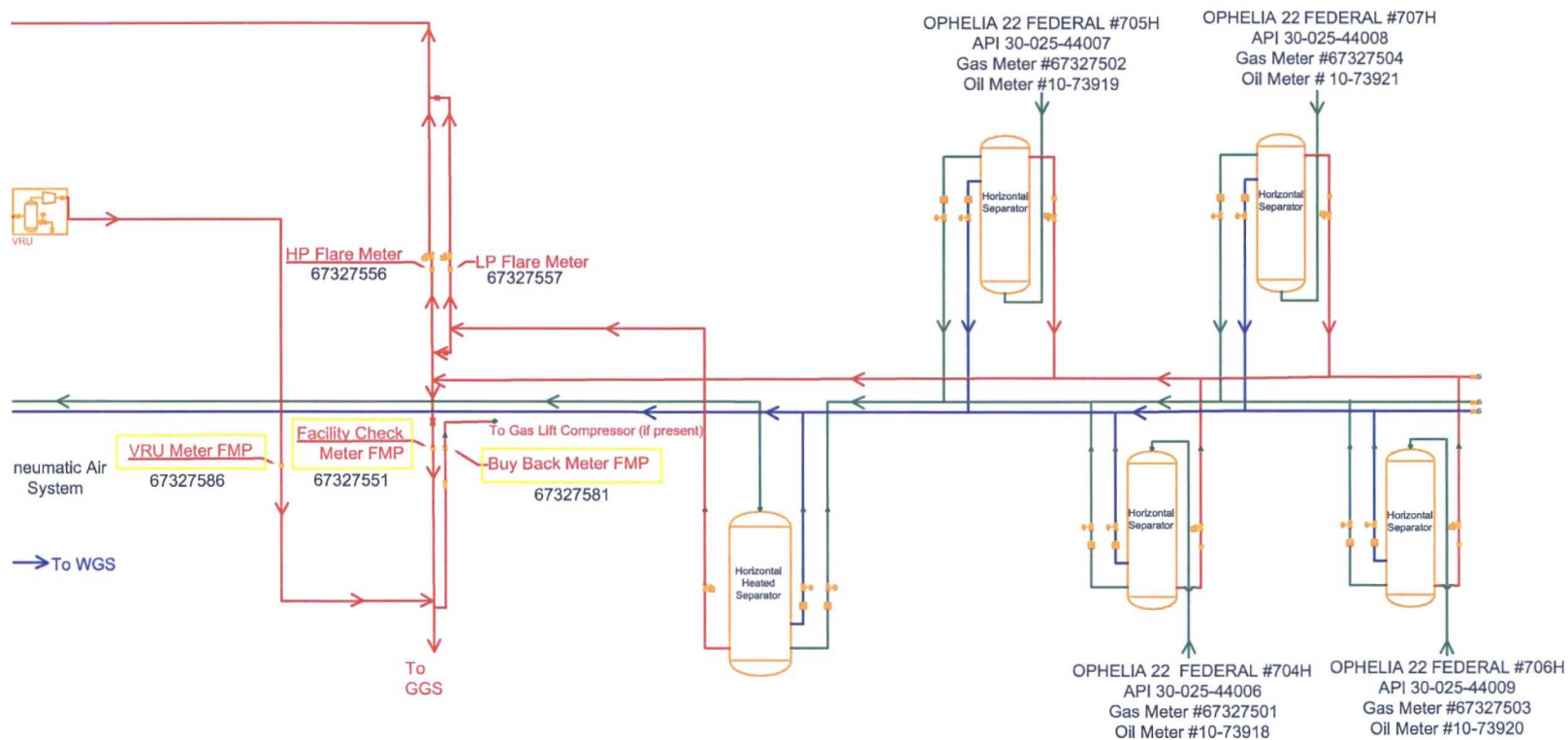
30-025-44009

<div data-bbox="97 113 226 251"> </div> <div data-bbox="301 113 711 284"> <p><b>EOG Resources, Inc.</b></p> <p><b>OPHELIA 22 W CTB</b></p> <p><b>D-22-26S-33E</b></p> </div> <div data-bbox="97 316 215 349"> <p>1/4/2018</p> </div>	<p><b>LEGEND</b></p> <table border="0"> <tr> <td></td> <td>Valve Open</td> <td></td> <td>Turbine/ Coriolis Meter</td> </tr> <tr> <td></td> <td>Valve Closed</td> <td></td> <td>Oil</td> </tr> <tr> <td></td> <td>Valve Sealed</td> <td></td> <td>Gas</td> </tr> <tr> <td></td> <td>Orifice Meter</td> <td></td> <td>Water</td> </tr> </table>		Valve Open		Turbine/ Coriolis Meter		Valve Closed		Oil		Valve Sealed		Gas		Orifice Meter		Water	<p><b>FACILITY DIAGRAM</b></p> <p>Shown: Major equipment, vessels, process piping, and valves</p> <p>Not shown: Auxiliary process systems such as pneumatic air system, gas lift system, roll lines, recirculating lines vent lines, and small drain lines</p> <p><b>PRODUCTION PHASE:</b> All valves that provide access to production are effectively sealed in the closed position.</p> <p><b>SALES THROUGH LACT UNITS:</b> Sale is measured through LACT units. All other valves that provide access to production (load-out valves) are effectively sealed in the closed position.</p> <p><b>WATER TANKS:</b> If the possibility for oil to enter water tanks exists through common recirculating or equalizing lines, oil tanks are isolated from water tanks by valves effectively sealed in the closed position.</p> <p><b>WELL SPECIFIC MEASUREMENT:</b> The production from each well will flow into a dedicated 3-phase separator. The production stream will be separated into 3 independent streams (gas, oil, and water) by the separator and each stream will be measured individually after it exits the separator. The gas will be measured using a senior orifice meter and used to allocate total volume measured at the facility check meter, high pressure flare meter, and low pressure flare meter.</p>
	Valve Open		Turbine/ Coriolis Meter															
	Valve Closed		Oil															
	Valve Sealed		Gas															
	Orifice Meter		Water															



**Facility Overview:** Please see pages 2 and 3 for details.





Bureau of Land Management

Hobbs Field Office

414 W. Taylor

Hobbs, New Mexico

505.393.3612

**WATER PRODUCTION & DISPOSAL INFORMATION**

Well: OPHELIA 22 FEDERAL COM #706H

NWNW Sec 22 T26S, R33E

30-025-44009

1. Name of formations producing water on lease: WOLFCAMP
2. Amount of water produced from all formations in barrels per day 3000-4000 BWPD
3. How water is stored on lease Tanks 4-400 bbl tanks
4. How water is moved to disposal facility Pipeline/Trucked
5. Disposal Facility:
  - a. Facility Operators name MACK ENERGY CORP
  - b. Name of facility or well name & number  
**Owl State #001**  
30-025-29025  
P-15-18S-35E  
Permit No 1134-0  
Water also goes to EOG Water gathering system

Type of facility or wells SWD