

Submit 1 Copy To Appropriate District Office
District I - (575) 393-6161
1625 N. French Dr., Hobbs, NM 88240
District II - (575) 748-1283
811 S. First St., Artesia, NM 88210
District III - (505) 334-6178
1000 Rio Brazos Rd., Aztec, NM 87410
District IV - (505) 476-3460
1220 S. St. Francis Dr., Santa Fe, NM 87505

State of New Mexico
Energy, Minerals and Natural Resources

Form C-103
Revised August 1, 2011

OIL CONSERVATION DIVISION
1220 South St. Francis Dr.
Santa Fe, NM 87505

WELL API NO.	
30-025-20228	✓
5. Indicate Type of Lease STATE XX FEE	✓
6. State Oil & Gas Lease No. B-3196	
7. Lease Name or Unit Agreement Name State 30 H 35	✓
8. Well Number 009	✓
9. OGRID Number 220397	✓
10. Pool name or Wildcat Vacuum; Abo North	
11. Elevation (Show whether DR, RKB, RT, GR, etc.)	

SUNDRY NOTICES AND REPORTS ON WELLS
(DO NOT USE THIS FORM FOR PROPOSALS TO DRILL OR TO DEEPEN OR PLUG BACK TO A DIFFERENT RESERVOIR. USE "APPLICATION FOR PERMIT" (FORM C-101) FOR SUCH PROPOSALS.)

1. Type of Well: Oil Well XX Gas Well Other **HOBBS OCD**

2. Name of Operator
McGowan Working Partners, Inc.

FEB 19 2018

3. Address of Operator
PO Box 55809, Jackson, MS 39296-5809

RECEIVED

4. Well Location

Unit Letter H: 1980 feet from the North line and 460 feet from the East line
Section 35 Township 17S Range 34E NMPM Lea County

12. Check Appropriate Box to Indicate Nature of Notice, Report or Other Data

NOTICE OF INTENTION TO:

PERFORM REMEDIAL WORK ☐ PLUG AND ABANDON ☒
TEMPORARILY ABANDON ☐ CHANGE PLANS ☐
PULL OR ALTER CASING ☐ MULTIPLE COMPL ☐
DOWNHOLE COMMINGLE ☐

SUBSEQUENT R'

REMEDIAL WORK ☐
COMMENCE DRILLING OPNS. ☐ INT TO PA **KS**
CASING/CEMENT JOB ☐ P&A NR
P&A R

OTHER: ☐

OTHER:

13. Describe proposed or completed operations. (Clearly state all pertinent details, and give pertinent dates, including estimated date of starting any proposed work). SEE RULE 19.15.7.14 NMAC. For Multiple Completions: Attach wellbore diagram of proposed completion or recompletion.

SEE ATTACHED

**NOTIFY OCD 24 HOURS PRIOR TO
BEGINNING PLUGGING OPERATIONS**

I hereby certify that the information above is true and complete to the best of my knowledge and belief.

SIGNATURE [Signature] TITLE Agent DATE 2/19/2018

Type or print name John Stearns E-mail address: bobbystearns1c@yahoo.com PHONE: 505-760-2482
For State Use Only

APPROVED BY: [Signature] TITLE Petroleum Engnr Specialist DATE 02-19-2018

Conditions of Approval (if any):

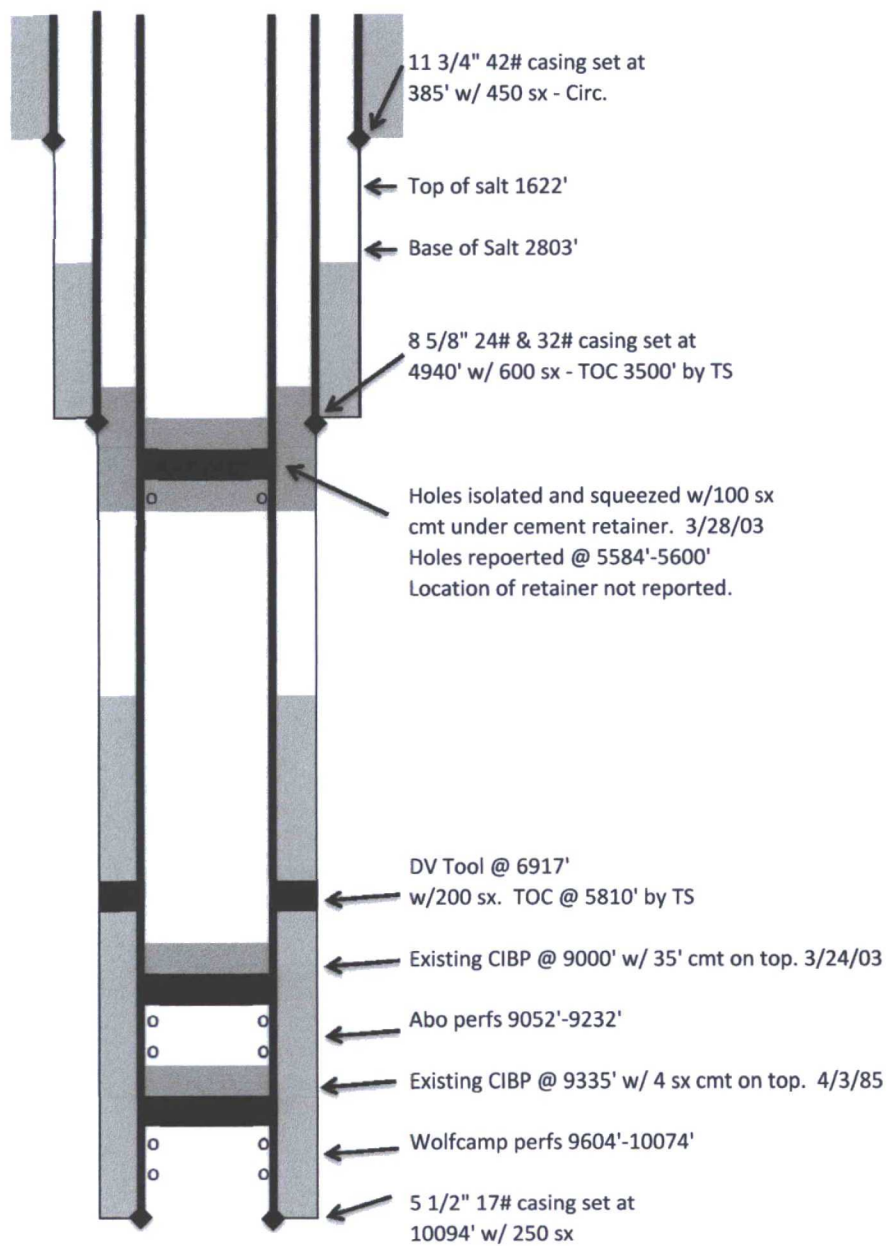
**C103 INTENT TO P&A EXPIRES
02-19-2019**

Proposed Plugging Procedures
State 35 H #9
API: 30-025-20228

1. Move in equipment and rig up. Pick up WS and tag existing cement retainer that is estimated to be at 5500'. Circulated MLF and test casing to 500#. Spot ~~65~~ sx cement on top of cement retainer. WOC and tag above ~~4890'~~ **25' SX**
2. Perforate casing at 2853' and squeeze with ~~50~~ sx cement. WOC and tag above 2753'. **65 SX**
3. Perforate casing at 1572' and squeeze with ~~50~~ sx cement. WOC and tag above 1472'. **65 SX**
4. Perforate casing at 435'. Pump cement down 5 1/2" casing to perfs at 435' and circulate cement to surface between the 5 1/2" casing and the 8 5/8" casing. Close intermediate head and circulate cement to surface between the 8 5/8" casing and the 11 3/4" casing. Estimate 220 sx of cement.
5. Cut off wellhead and verify cement is to surface in all strings of casing. Install marker and cut off anchors.

→ Perforate 5 1/2 @ 4990'. SQZ w/ 30 sx. WOC & TAG (Shoe Plug)

McGowan Working Partners, Inc
State 35 H #9
API 30-025-20228
WBD Before P&A



McGowan Working Partners, Inc
State 35 H #9
API 30-025-20228
WBD After P&A

Perforate casing at 435'
and circulate cement to
surface in all casing strings

Perf @ 1572' and squeeze
with 50 sx. Top salt plug

Perf @ 2853' and squeeze
with 50 sx. Base of salt plug.

Tag existing retainer and spot
enough cement to cover the int shoe.
Estimate 60 sx. WOC and tag above 4890'.

11 3/4" 42# casing set at
385' w/ 450 sx - Circ.

Top of salt 1622'

Base of Salt 2803'

8 5/8" 24# & 32# casing set at
4940' w/ 600 sx - TOC 3500' by TS

Holes isolated and squeezed w/100 sx
cmt under cement retainer. 3/28/03
Holes reported @ 5584'-5600'
Location of retainer not reported.
Estimate retainer @ 5500'

DV Tool @ 6917'
w/200 sx. TOC @ 5810' by TS

Existing CIBP @ 9000' w/ 35' cmt on top. 3/24/03

Abo perms 9052'-9232'

Existing CIBP @ 9335' w/ 4 sx cmt on top. 4/3/85

Wolfcamp perms 9604'-10074'

5 1/2" 17# casing set at
10094' w/ 250 sx

Perf 8 5/8 shoe &
attempt to SQZ

