

UNITED STATES  
DEPARTMENT OF THE INTERIOR  
BUREAU OF LAND MANAGEMENT

FORM APPROVED  
OMB No. 1004-0137  
Expires: July 31, 2010

WELL COMPLETION OR RECOMPLETION REPORT AND LOG

5. Lease Serial No.  
NMNM90161

6. If Indian, Allottee or Tribe Name

7. Unit or CA Agreement Name and No  
NMNM120042X

8. Lease Name and Well No.  
WEST BLINEBRY DRINKARD UNIT 184

9. API Well No.  
30-025-43804

10. Field and Pool, or Exploratory  
EUNICE; B-T-D, NORTH

11. Sec., T., R., M., or Block and Survey  
or Area Sec 8 T21S R37E Mer

12. County or Parish  
LEA COUNTY

13. State  
NM

14. Date Spudded  
05/16/2017

15. Date T.D. Reached  
05/22/2017

16. Date Completed  
☐ D & A ☒ Ready to Prod.  
06/21/2017

17. Elevations (DF, KB, RT, GL)\*  
3519 GL

18. Total Depth: MD 6955  
TVD

19. Plug Back T.D.: MD 6955  
TVD

20. Depth Bridge Plug Set: MD  
TVD

21. Type Electric & Other Mechanical Logs Run (Submit copy of each)  
RCBL/GR/CCL

22. Was well cored? ☒ No ☐ Yes (Submit analysis)  
Was DST run? ☒ No ☐ Yes (Submit analysis)  
Directional Survey? ☐ No ☒ Yes (Submit analysis)

23. Casing and Liner Record (Report all strings set in well)

Hole Size	Size/Grade	Wt (#/ft.)	Top (MD)	Bottom (MD)	Stage Cementer Depth	No. of Sk. & Type of Cement	Slurry Vol. (BBL)	Cement Top*	Amount Pulled
11.000	8.625 J-55	24.0	0	1347		575		0	
7.875	5.500 L-80	17.0	0	6955		1870		0	

24. Tubing Record

Size	Depth Set (MD)	Packer Depth (MD)	Size	Depth Set (MD)	Packer Depth (MD)	Size	Depth Set (MD)	Packer Depth (MD)
2.375	6613	6593						

25. Producing Intervals

26. Perforation Record

Formation	Top	Bottom	Perforated Interval	Size	No. Holes	Perf. Status
A) DRINKARD	6655	6771	6655 TO 6771		168	INJECTING, PENDING INJECTION
B)						
C)						
D)						

27. Acid, Fracture, Treatment, Cement Squeeze, Etc.

Depth Interval	Amount and Type of Material
6655 TO 6771	10,000 GAL ACID

28. Production - Interval A

Date First Produced	Test Date	Hours Tested	Test Production	Oil BBL	Gas MCF	Water BBL	Oil Gravity Corr API	Gas Gravity	Production Method
			→						
Choke Size	Tbg Press Flwg SI	Csg Press	24 Hr Rate	Oil BBL	Gas MCF	Water BBL	Gas Oil Ratio	Well Status	
			→						

28a. Production - Interval B

Date First Produced	Test Date	Hours Tested	Test Production	Oil BBL	Gas MCF	Water BBL	Oil Gravity Corr API	Gas Gravity	Production Method
			→						
Choke Size	Tbg Press Flwg SI	Csg Press	24 Hr Rate	Oil BBL	Gas MCF	Water BBL	Gas Oil Ratio	Well Status	
			→						

(See Instructions and spaces for additional data on reverse side)

ELECTRONIC SUBMISSION #385132 VERIFIED BY THE BLM WELL INFORMATION SYSTEM

\*\* OPERATOR-SUBMITTED \*\* OPERATOR-SUBMITTED \*\* OPERATOR-SUBMITTED \*\*

Redemption was due: 12/21/2017

ACCEPTED FOR RECORD

FEB 7 2018

BUREAU OF LAND MANAGEMENT  
CARLSBAD FIELD OFFICE

K5

K2

## 28b. Production - Interval C

Date First Produced	Test Date	Hours Tested	Test Production	Oil BBL	Gas MCF	Water BBL	Oil Gravity Corr API	Gas Gravity	Production Method
			→						
Choke Size	Tbg Press Flwg SI	Csg Press	24 Hr Rate	Oil BBL	Gas MCF	Water BBL	Gas Oil Ratio	Well Status	
			→						

## 28c. Production - Interval D

Date First Produced	Test Date	Hours Tested	Test Production	Oil BBL	Gas MCF	Water BBL	Oil Gravity Corr API	Gas Gravity	Production Method
			→						
Choke Size	Tbg Press Flwg SI	Csg Press	24 Hr Rate	Oil BBL	Gas MCF	Water BBL	Gas Oil Ratio	Well Status	
			→						

29. Disposition of Gas(Sold, used for fuel, vented, etc.)  
UNKNOWN

## 30. Summary of Porous Zones (Include Aquifers):

Show all important zones of porosity and contents thereof. Cored intervals and all drill-stem tests, including depth interval tested, cushion used, time tool open, flowing and shut-in pressures and recoveries.

## 31. Formation (Log) Markers

Formation	Top	Bottom	Descriptions, Contents, etc.	Name	Top
					Meas. Depth
RUSTLER	1304	2533	LIMESTONE, SALT W	RUSTLER	1304
TANSILL	2533	2666	DOLOMITE O/G/W	TANSILL	2533
YATES	2666	2918	SANDSTONE O/G/W	YATES	2666
SEVEN RIVERS	2918	3451	SALT, DOLOMITE O/G/W	SEVEN RIVERS	2918
QUEEN	3451	3561	DOLOMITE O/G/W	QUEEN	3451
PENROSE	3561	3728	SILT	PENROSE	3561
GRAYBURG	3728	3952	SANDSTONE, LIMESTONE O/G/W	GRAYBURG	3728
SAN ANDRES	3952	5204	DOLOMITE O/G/W	SAN ANDRES	3952

## 32. Additional remarks (include plugging procedure):

Glorieta 5204 5281 Dolomite O/G/W Glorieta 5204  
Paddock 5281 5726 Limestone O/G/W Paddock 5281  
Blaine 5726 6209 Limestone O/G/W Blaine 5726  
Tubb 6209 6554 Limestone, Dolomite, Silt O/G/W Tubb 6209  
Drinkard 6554 6831 Limestone, Dolomite O/G/W Drinkard 6554  
Abo 6831 6955 Limestone O/G/W Abo 6831

## 33. Circle enclosed attachments:

1. Electrical/Mechanical Logs (1 full set req'd.)
2. Geologic Report
3. DST Report
4. Directional Survey
5. Sundry Notice for plugging and cement verification
6. Core Analysis
7. Other:

## 34. I hereby certify that the foregoing and attached information is complete and correct as determined from all available records (see attached instructions):

Electronic Submission #385132 Verified by the BLM Well Information System.  
For APACHE CORPORATION, sent to the Hobbs

Name (please print) REESA FISHER

Title SR STAFF REGULATORY ANALYST

Signature (Electronic Submission)

Date 08/17/2017

Title 18 U.S.C. Section 1001 and Title 43 U.S.C. Section 1212, make it a crime for any person knowingly and willfully to make to any department or agency of the United States any false, fictitious or fraudulent statements or representations as to any matter within its jurisdiction.

\*\* ORIGINAL \*\* ORIGINAL \*\* ORIGINAL \*\* ORIGINAL \*\* ORIGINAL \*\* ORIGINAL \*\* ORIGINAL \*\*

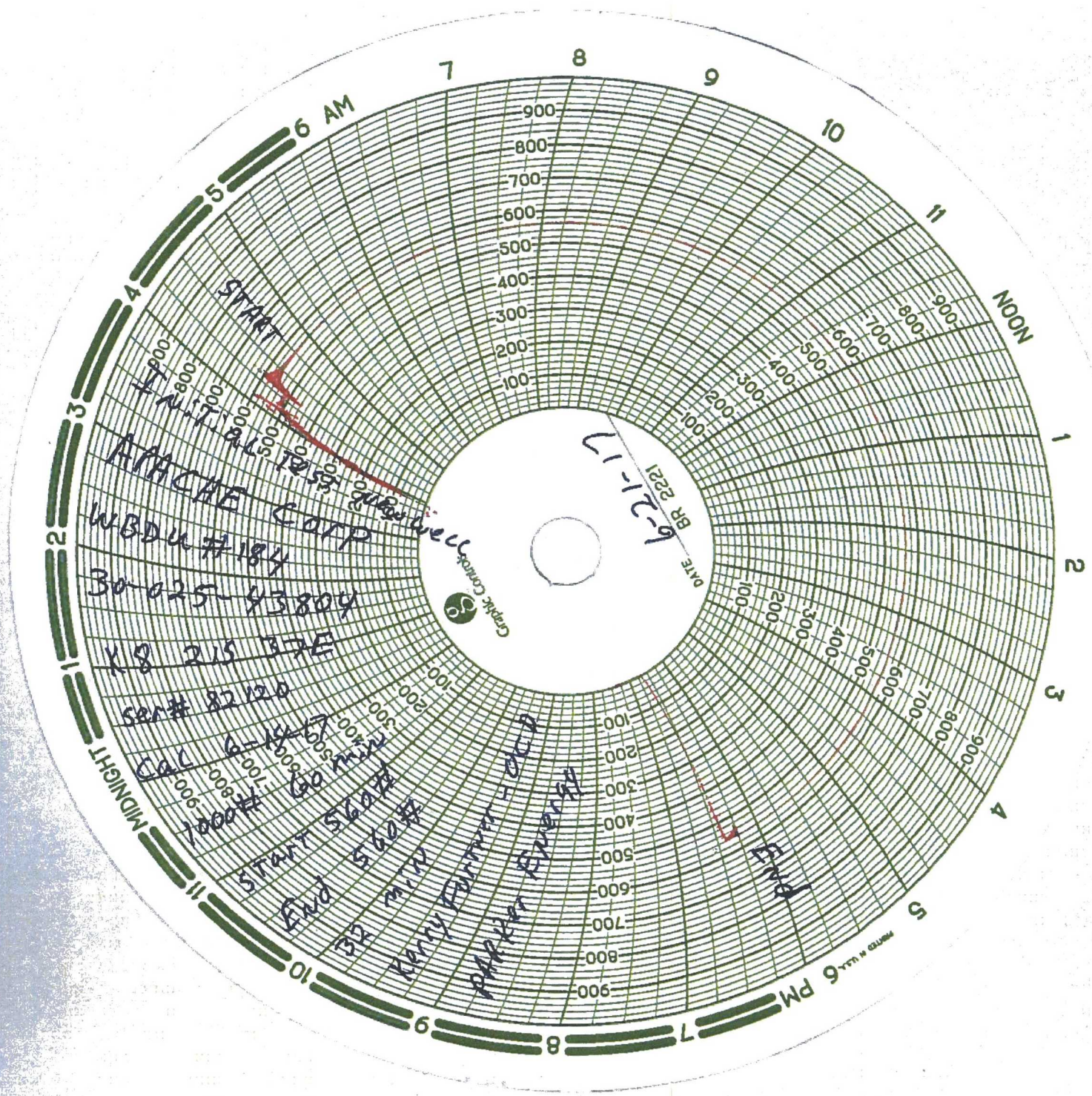
**Additional data for transaction #385132 that would not fit on the form**

32. Additional remarks, continued

RR 5/23/2017

Will begin injection as soon as WFX Order issued by OCD.





START  
APACHE CORP  
WBDU #184  
30-025-43804

X8 215 37E  
6-18-17  
CAL 60 min  
1000 ft  
START 560 ft  
END 560 ft  
32 min

Kerry Farmer - DCD  
Parker Energy

DATE 6-17-17  
BR 2221



END



State of New Mexico  
Energy, Minerals and Natural Resources Department  
Oil Conservation Division Hobbs District Office

**BRADENHEAD TEST REPORT**

Operator Name <b>APACHE CORP</b>		API Number <b>30-025-43804-0000</b>
Property Name <b>WBDU</b>		Well No. <b>184</b>

**Surface Location**

UL - Lot <b>K</b>	Section <b>8</b>	Township <b>21-S</b>	Range <b>37-E</b>	Feet from <b>1820</b>	N/S Line <b>S</b>	Feet From <b>2300</b>	E/W Line <b>W</b>	County <b>LEA</b>
----------------------	---------------------	-------------------------	----------------------	--------------------------	----------------------	--------------------------	----------------------	----------------------

**Well Status**

TA'D Well YES <b>NO</b>	SHUT-IN YES <b>NO</b>	INJECTOR <b>INJ</b> SWD	PRODUCER OIL GAS	DATE <b>6-21-17</b>
----------------------------	--------------------------	----------------------------	---------------------	------------------------

**OBSERVED DATA**

	(A)Surf-Interm	(B)Interm(1)	(C)Interm(2)	(D)Prod Csg	(E)Tubing
Pressure	<b>0</b>	<b>—</b>	<b>—</b>	<b>0</b>	<b>0</b>
Flow Characteristics					<b>NOT INS</b>
Puff	<b>Y/N</b>	<b>Y/N</b>	<b>Y/N</b>	<b>Y/N</b>	CO2 <b>—</b>
Steady Flow	<b>Y/N</b>	<b>Y/N</b>	<b>Y/N</b>	<b>Y/N</b>	WTR <b>—</b>
Surges	<b>Y/N</b>	<b>Y/N</b>	<b>Y/N</b>	<b>Y/N</b>	GAS <b>—</b>
Down to nothing	<b>Y/N</b>	<b>Y/N</b>	<b>Y/N</b>	<b>Y/N</b>	If applicable type
Gas or Oil	<b>Y/N</b>	<b>Y/N</b>	<b>Y/N</b>	<b>Y/N</b>	fluid injected for
Water	<b>Y/N</b>	<b>Y/N</b>	<b>Y/N</b>	<b>Y/N</b>	Waterflood

Remarks: Please state for each string (A,B,C,D,E) pertinent information regarding bleed down or continuous build up if applies.

Signature:		<b>OIL CONSERVATION DIVISION</b>
Printed name:		Entered into RBDMS
Title:		Re-test
E-mail Address:		
Date: <b>6-21-17</b>	Phone:	
Witness: <b>KERRY FORTNER-OCD 575-399-3221</b>		