

DISTRICT I
1625 N. French Dr., Hobbs, NM 88240
Phone: (575) 393-6161 Fax: (575) 393-0720

DISTRICT II
811 S. First St., Artesia, NM 88210
Phone: (575) 748-1283 Fax: (575) 748-9720

DISTRICT III
1000 Rio Brazos Road, Aztec, NM 87410
Phone: (505) 334-6178 Fax: (505) 334-6170

DISTRICT IV
1220 S. St. Francis Dr., Santa Fe, NM 87505
Phone: (505) 476-3460 Fax: (505) 476-3462

State of New Mexico
Energy, Minerals & Natural Resources Department
OIL CONSERVATION DIVISION
1220 South St. Francis Dr.
Santa Fe, New Mexico 87505

Form C-102
Revised August 1, 2011
Submit one copy to appropriate
District Office

AMENDED REPORT

WELL LOCATION AND ACREAGE DEDICATION PLAT

API Number 30-025-44395	Pool Code 13350	Pool Name CORMAN / SAN ANDRES
Property Code 320661	Property Name ANGEL EYES 17 STATE	Well Number 1H
OGRID No. 147404	Operator Name COBRA OIL & GAS CORPORATION	Elevation 4204'

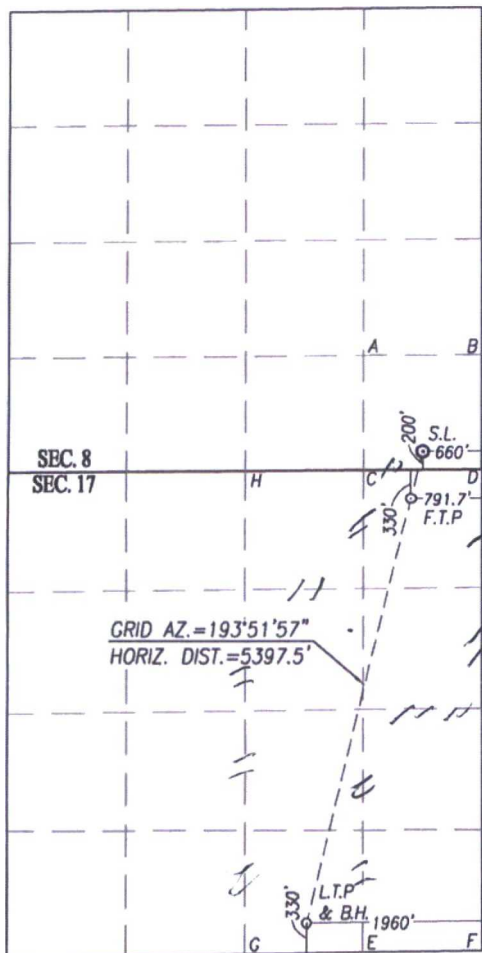
Surface Location

UL or lot No. P	Section 8	Township 10-S	Range 33-E	Lot Idn	Feet from the 200	North/South line SOUTH	Feet from the 660	East/West line EAST	County LEA
---------------------------	---------------------	-------------------------	----------------------	---------	-----------------------------	----------------------------------	-----------------------------	-------------------------------	----------------------

Last Take Point/Bottom Hole Location If Different From Surface

UL or lot No. O	Section 17	Township 10-S	Range 33-E	Lot Idn	Feet from the 330	North/South line SOUTH	Feet from the 1960	East/West line EAST	County LEA
Dedicated Acres	Joint or Infill	Consolidation Code	Order No.						

NO ALLOWABLE WILL BE ASSIGNED TO THIS COMPLETION UNTIL ALL INTERESTS HAVE BEEN CONSOLIDATED OR A NON-STANDARD UNIT HAS BEEN APPROVED BY THE DIVISION



SCALE: 1"=2000'

<p>GEODETIC COORDINATES NAD 83 NME SURFACE LOCATION Y= 893752.7 N X= 769811.1 E LAT.=33.454577° N LONG.=103.584235° W FIRST TAKE POINT NAD 83 NME Y=893221.8 N X=769680.1 E LAT.=33.453120° N LONG.=103.584677° W</p>	<p>GEODETIC COORDINATES NAD 27 NME SURFACE LOCATION Y= 893687.1 N X= 728634.5 E LAT.=33.454472° N LONG.=103.583725° W FIRST TAKE POINT NAD 27 NME Y=893156.2 N X=728503.4 E LAT.=33.453016° N LONG.=103.584167° W</p>
---	---

CORNER COORDINATES TABLE

NAD 27 NME

A - Y= 894772.8 N, X= 727970.1 E
B - Y= 894784.1 N, X= 729293.0 E
C - Y= 893482.1 N, X= 727971.3 E
D - Y= 893492.1 N, X= 729294.6 E
E - Y= 888128.2 N, X= 727976.2 E
F - Y= 888149.3 N, X= 729301.2 E
G - Y= 888107.1 N, X= 726651.2 E
H - Y= 893472.1 N, X= 726648.1 E

CORNER COORDINATES TABLE

NAD 83 NME

A - Y= 894838.4 N, X= 769146.8 E
B - Y= 894849.7 N, X= 770469.6 E
C - Y= 893547.7 N, X= 769148.0 E
D - Y= 893557.7 N, X= 770471.2 E
E - Y= 888193.8 N, X= 769152.8 E
F - Y= 888214.9 N, X= 770477.8 E
G - Y= 888172.7 N, X= 767827.8 E
H - Y= 893537.6 N, X= 767824.7 E

<p>LAST TAKE POINT & BOTTOM HOLE LOCATION NAD 83 NME Y=888513.6 N X=768517.9 E LAT.=33.440205° N LONG.=103.588598° W</p>	<p>LAST TAKE POINT & BOTTOM HOLE LOCATION NAD 27 NME Y=888448.0 N X=727341.3 E LAT.=33.440099° N LONG.=103.588088° W</p>
--	--

OPERATOR CERTIFICATION

I hereby certify that the information herein is true and complete to the best of my knowledge and belief, and that this organization either owns a working interest or unleased mineral interest in the land including the proposed bottom hole location or has a right to drill this well at this location pursuant to a contract with an owner of such mineral or working interest, or to a voluntary pooling agreement or a compulsory pooling order heretofore entered by the division.

Kyle Gardner 2/22/18
Signature Date
Kyle Gardner
Printed Name
Kgardner@cobroag.com
E-mail Address

SURVEYOR CERTIFICATION

I hereby certify that the well location shown on this plat was plotted from field notes of actual surveys made by me or under my supervision, and that the same is true and correct to the best of my belief.

AUGUST 28, 2017

Date of Survey
Signature of Registered Professional Surveyor:

Ronald J. Eidson
NEW MEXICO
REGISTERED SURVEYOR
3239
Certificate Number
Gary C. Eidson 12641
Ronald J. Eidson 3239
ACK REL. W.O.:18130025 JWSC W.O.: 18.13.0035