

DISTRICT I
1625 N. French Dr., Hobbs, NM 88240
Phone: (575) 393-6161 Fax: (575) 393-0720

DISTRICT II
811 S. First St., Artesia, NM 88210
Phone: (575) 748-1283 Fax: (575) 748-9720

DISTRICT III
1000 Rio Brazos Road, Aztec, NM 87410
Phone: (505) 334-6178 Fax: (505) 334-6170

DISTRICT IV
1220 S. St. Francis Dr., Santa Fe, NM 87505
Phone: (505) 476-3460 Fax: (505) 476-3462

State of New Mexico
Energy, Minerals & Natural Resources Department
OIL CONSERVATION DIVISION
1220 South St. Francis Dr.
Santa Fe, New Mexico 87505

Form C-102
Revised August 1, 2011
Submit one copy to appropriate
District Office

AMENDED REPORT

WELL LOCATION AND ACREAGE DEDICATION PLAT

API Number 30-005-29217	Pool Code 96101	Pool Name SWD; Devonian
Property Code 321004	Property Name STATE WISHBONE SWD	Well Number 1
OGRID No. 147404	Operator Name COBRA OIL & GAS CORPORATION	Elevation 4503'

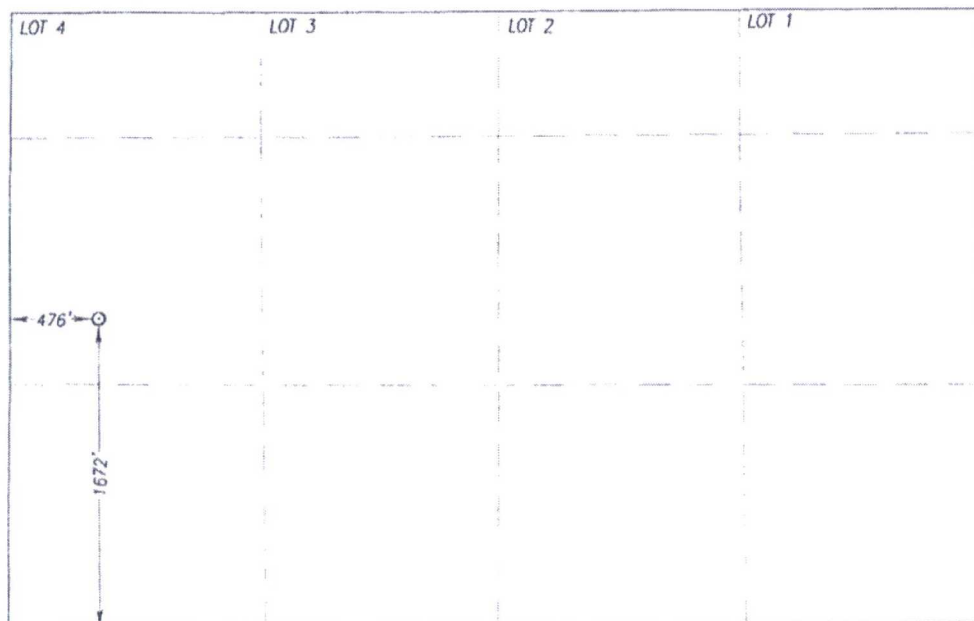
Surface Location

UL or lot No. L	Section 1	Township 11-S	Range 31-E	Lot Idn	Feet from the 1672	North/South line SOUTH	Feet from the 476	East/West line WEST	County CHAVES
---------------------------	---------------------	-------------------------	----------------------	---------	------------------------------	----------------------------------	-----------------------------	-------------------------------	-------------------------

Bottom Hole Location If Different From Surface

UL or lot No.	Section	Township	Range	Lot Idn	Feet from the	North/South line	Feet from the	East/West line	County				
<table border="1"> <tr> <td>Dedicated Acres 0</td> <td>Joint or Infill</td> <td>Consolidation Code</td> <td>Order No.</td> </tr> </table>										Dedicated Acres 0	Joint or Infill	Consolidation Code	Order No.
Dedicated Acres 0	Joint or Infill	Consolidation Code	Order No.										

NO ALLOWABLE WILL BE ASSIGNED TO THIS COMPLETION UNTIL ALL INTERESTS HAVE BEEN CONSOLIDATED OR A NON-STANDARD UNIT HAS BEEN APPROVED BY THE DIVISION



GEODETIC COORDINATES
NAD 27 NME
SURFACE LOCATION
Y=870096.0 N
X=668408.7 E
LAT.=33.390673° N
LONG.=103.781584° W

GEODETIC COORDINATES
NAD 83 NME
SURFACE LOCATION
Y=870161.8 N
X=709586.2 E
LAT.=33.390779° N
LONG.=103.782096° W

OPERATOR CERTIFICATION

I hereby certify that the information herein is true and complete to the best of my knowledge and belief, and that this organization either owns a working interest or unleased mineral interest in the land including the proposed bottom hole location or has a right to drill this well at this location pursuant to a contract with an owner of such mineral or working interest, or to a voluntary pooling agreement or a compulsory pooling order heretofore entered by the division.

Kyle Gardner 03/07/18
Signature Date
Kyle Gardner
Printed Name
kgardner@cobraogc.com
E-mail Address

SURVEYOR CERTIFICATION

I hereby certify that the well location shown on this plat was plotted from field notes of actual surveys made by me or under my supervision, and that the same is true and correct to the best of my belief.

DECEMBER 11, 2017

Date of Survey
Signature & Seal of Professional Surveyor

Ronald J. Eidson
Certificate Number 3239
Gary G. Eidson 12641
Ronald J. Eidson 3239
ACK JWSC W O 17.11.1143

DISTRICT I
1625 N. French Dr. Hobbs, NM 88240
Phone: (575) 795-6161 Fax: (575) 795-6720

DISTRICT II
811 S. First St. Artesia, NM 88210
Phone: (575) 748-1287 Fax: (575) 748-9720

DISTRICT III
1000 Rio Brazos Road, Artesia, NM 88210
Phone: (505) 334-6178 Fax: (505) 334-6170

DISTRICT IV
1220 S. St. Francis Dr. Santa Fe, NM 87505
Phone: (505) 476-3460 Fax: (505) 476-3462

State of New Mexico
Energy, Minerals & Natural Resources Department
OIL CONSERVATION DIVISION
1220 South St. Francis Dr.
Santa Fe, New Mexico 87505

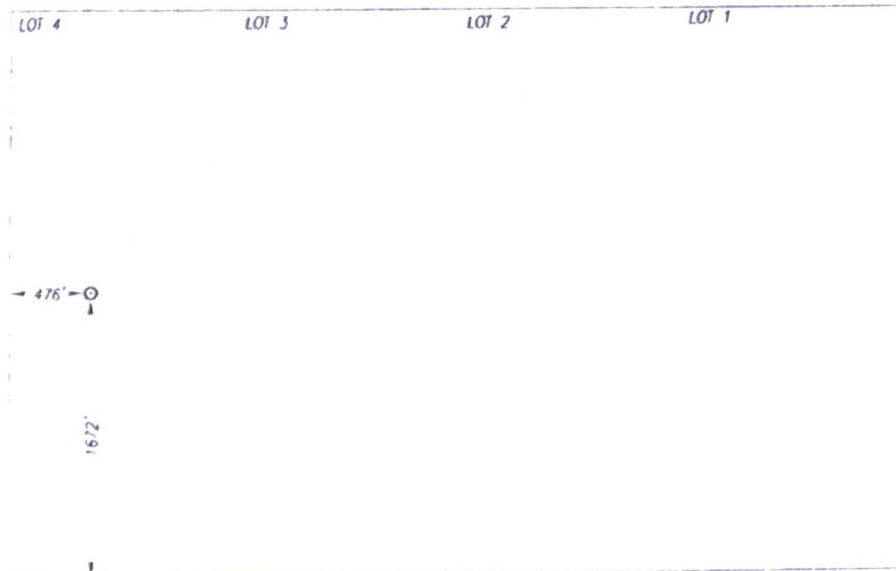
Form C-102
Revised August 1, 2011
Submit one copy to appropriate
District Office

☐ AMENDED REPORT

WELL LOCATION AND ACREAGE DEDICATION PLAT

API Number 30-005-29217		Pool Code 96101		Pool Name SWD; Devonian	
Property Code 321004		Property Name STATE WISHBONE SWD			Well Number 1
GRID No. 147404		Operator Name COBRA OIL & GAS CORPORATION			Elevation 4503'
Surface Location					
TL or Lot No. L	Section 1	Township 11-S	Range 31-E	Lot Idn	Feet from the 1672
		North/South line SOUTH		Feet from the 476	East West line WEST
					County CHAVES
Bottom Hole Location If Different From Surface					
TL or Lot No.	Section	Township	Range	Lot Idn	Feet from the
		North/South line		Feet from the	East West line
					County
Dedicated Acres		Joint or Infill	Consolidation Code	Order No	

NO ALLOWABLE WILL BE ASSIGNED TO THIS COMPLETION UNTIL ALL INTERESTS HAVE BEEN CONSOLIDATED OR A NON-STANDARD UNIT HAS BEEN APPROVED BY THE DIVISION



GEODETIC COORDINATES NAD 27 NME SURFACE LOCATION Y=870096.0 N X=668408.7 E LAT = 33.390673° N LONG = 103.781584° W	GEODETIC COORDINATES NAD 83 NME SURFACE LOCATION Y=870161.8 N X=709586.2 E LAT = 33.390779° N LONG = 103.782096° W
--	--

OPERATOR CERTIFICATION

I hereby certify that the information herein is true and complete to the best of my knowledge and belief, and that this organization either owns a working interest or unleased mineral interest in the land including the proposed bottom hole location or has a right to drill this well at this location pursuant to a contract with an owner of such mineral or working interest, or to a voluntary pooling agreement or a compulsory pooling order heretofore entered by the division

Kyle Gardner
Signature

01/31/2018
Date

Kyle Gardner
Printed Name

kgardner@cobraogc.com
E-mail Address

SURVEYOR CERTIFICATION

I hereby certify that the well location shown on this plat was plotted from field notes of actual surveys made by me or under my supervision, and that the same is true and correct to the best of my belief

DECEMBER 11, 2017

Date of Survey
Signature & Seal of Professional Surveyor

Ronald J. Edson
Certificate Number
Gary O. Edson 12641
Ronald J. Edson 3239

ACK

JWSC W.O. 17111043