

District I
1625 N. French Dr., Hobbs, NM 88240
Phone: (575) 393-6161 Fax: (575) 393-0720
District II
811 S. First St., Artesia, NM 88210
Phone: (575) 748-1283 Fax: (575) 748-9720
District III
1000 Rio Hondo Road, Aztec, NM 87410
Phone: (505) 334-6178 Fax: (505) 334-6170
District IV
1220 S. St. Francis Dr., Santa Fe, NM 87505
Phone: (505) 476-3460 Fax: (505) 476-3462

State of New Mexico
Minerals & Natural Resources Department
OIL CONSERVATION DIVISION
400 South St. Francis Dr.
Santa Fe, NM 87505

Form C-102
Revised August 1, 2011
Submit one copy to appropriate
District Office

☐ AMENDED REPORT

RECEIVED

WELL LOCATION AND ACREAGE DEDICATION PLAT

API Number 30-025-44289	Pool Code 90553	Pool Name Ojo Chiso, Bone Spring
Property Code 318034	Property Name TOUR BUS 23 STATE	Well Number 301H
OGUID No. 312105	Operator Name CENTENNIAL RESOURCE PRODUCTION, LLC	Elevation 3489.3'

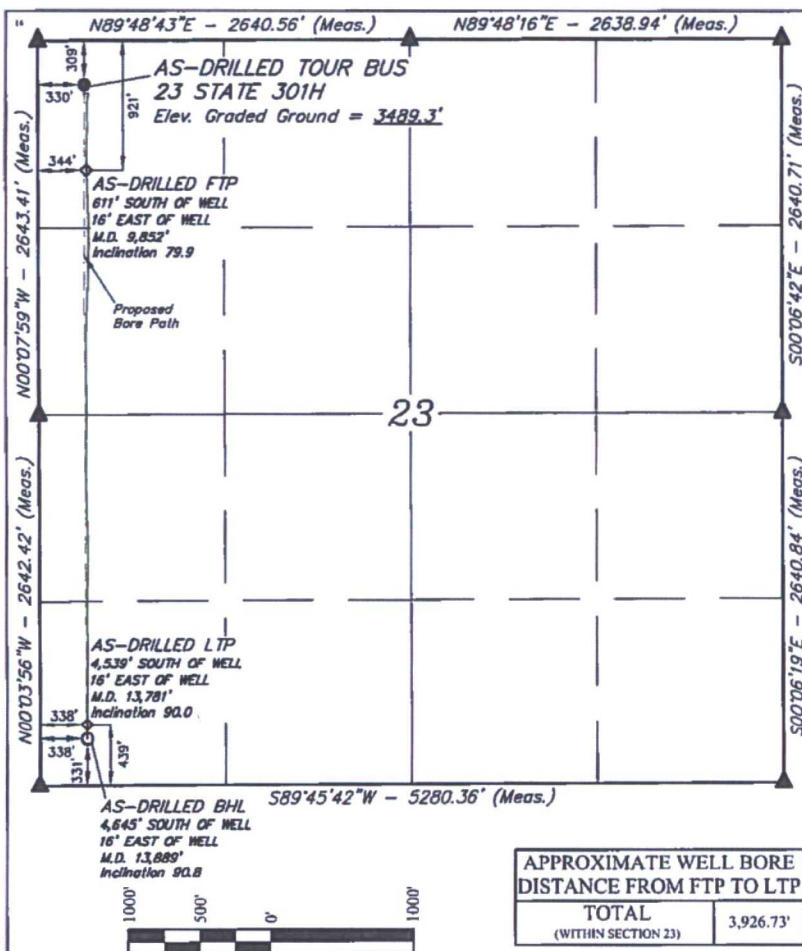
Surface Location

UL or lot no.	Section	Township	Range	Lot Idn	Feet from the	North/South line	Feet from the	East/West line	County
D	23	22S	34E		309	NORTH	330	WEST	LEA

Bottom Hole Location If Different From Surface

UL or lot no.	Section	Township	Range	Lot Idn	Feet from the	North/South line	Feet from the	East/West line	County
M	23	22S	34E		331	SOUTH	338	WEST	LEA
Dedicated Acres 160	Joint or Infill	Consolidation Code	Order No.						

No allowable will be assigned to this completion until all interests have been consolidated or a non-standard unit has been approved by the division.



APPROXIMATE WELL BORE DISTANCE FROM FTP TO LTP

TOTAL	3,926.73'
(WITHIN SECTION 23)	

SCALE
DRAWN BY: C.D. 04-30-18

NAD 83 (AS-DRILLED SHL) LATITUDE = 32°22'01.01" (32.36813°) LONGITUDE = 103°26'53.64" (103.448234°) STATE PLANE NAD 83 (NM EAST) Y: 504428.13' X: 814563.79' UTM, NAD 83 (ZONE 13) Y: 11758560.36' X: 2119309.02'	NAD 83 (AS-DRILLED FTP) LATITUDE = 32°22'54.96" (32.381933°) LONGITUDE = 103°26'53.49" (103.448191°) STATE PLANE NAD 83 (NM EAST) Y: 503809.18' X: 814582.10' UTM, NAD 83 (ZONE 13) Y: 11757949.61' X: 2119331.14'
NAD 83 (AS-DRILLED LTP) LATITUDE = 32°22'16.12" (32.371144°) LONGITUDE = 103°26'53.67" (103.448242°) STATE PLANE NAD 83 (NM EAST) Y: 499884.03' X: 814599.07' UTM, NAD 83 (ZONE 13) Y: 11754025.16' X: 2119372.57'	NAD 83 (AS-DRILLED BHL) LATITUDE = 32°22'15.05" (32.370848°) LONGITUDE = 103°26'53.67" (103.448243°) STATE PLANE NAD 83 (NM EAST) Y: 499776.05' X: 814599.68' UTM, NAD 83 (ZONE 13) Y: 11753917.30' X: 2119371.85'

NOTE:

- Distances referenced on plat to section lines are perpendicular
- Basis of Bearing is a Transverse Mercator Projection with a Central Meridian of W103°53'00"

- = AS-DRILLED SURFACE HOLE LOCATION
- ◇ = AS-DRILLED FIRST TAKE POINT/LAST TAKE POINT
- = AS-DRILLED BOTTOM HOLE
- ▲ = SECTION CORNER LOCATED

OPERATOR CERTIFICATION

I hereby certify that the information contained herein is true and complete to the best of my knowledge and belief, and that this organization either owns a working interest or unleased mineral interest in the land including the proposed bottom hole location or has a right to drill this well at this location pursuant to a contract with an owner of such a mineral or working interest, or to a voluntary pooling agreement or a compulsory pooling order hereby approved by the division.

Signature: *Melissa Luke* Date: *12/18*

Printed Name: *Melissa Luke*

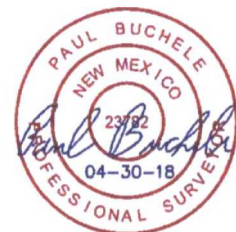
E-mail Address: *melissa.luke@cedarline.com*

SURVEYOR CERTIFICATION

I hereby certify that the well location shown on this plat was plotted from field notes of actual surveys made by me or under my supervision, and that the same is true and correct to the best of my belief.

January 12, 2018

Date of Survey
Signature and Seal of Professional Surveyor:



Certificate Number: