

Submit 1 Copy To Appropriate District Office
District I - (575) 393-6161
1625 N. French Dr., Hobbs, NM 88240
District II - (575) 748-1283
811 S. First St., Artesia, NM 88210
District III - (505) 334-6178
1000 Rio Brazos Rd., Aztec, NM 87410
District IV - (505) 476-3460
1220 S. St. Francis Dr., Santa Fe, NM 87505

State of New Mexico
Energy, Minerals and Natural Resources
HOBBS OCD
OIL CONSERVATION DIVISION
MAY 16 2018
RECEIVED
1220 South St. Francis Dr.
Santa Fe, NM 87505

Form C-103
Revised August 1, 2011

| |
|---|
| WELL API NO. 30-025-38576 and 30-025-42139 |
| 5. Indicate Type of Lease STATE <input checked="" type="checkbox"/> FEE <input type="checkbox"/> |
| 6. State Oil & Gas Lease No. V07530-0001 |
| 7. Lease Name or Unit Agreement Name Linam AGI |
| 8. Wells Number 1 and 2 |
| 9. OGRID Number 36785 |
| 10. Pool name or Wildcat Wildcat |
| 11. Elevation (Show whether DR, RKB, RT, GR, etc.) 3736 GR |

AGI: WOLF CAMP
97756

SUNDRY NOTICES AND REPORTS ON WELLS
(DO NOT USE THIS FORM FOR PROPOSALS TO DRILL OR TO DEEPEN OR PLUG BACK TO A DIFFERENT RESERVOIR. USE "APPLICATION FOR PERMIT" (FORM C-101) FOR SUCH PROPOSALS.)

1. Type of Well: Oil Well ☐ Gas Well ☒ Other *Inj*
2. Name of Operator
DCP Midstream LP
3. Address of Operator
370 17th Street, Suite 2500, Denver CO 80202
4. Well Location
Unit Letter K; 1980 feet from the South line and 1980 feet from the West line
Section 30 Township 18S Range 37E NMPM County Lea

12. Check Appropriate Box to Indicate Nature of Notice, Report or Other Data

NOTICE OF INTENTION TO:

PERFORM REMEDIAL WORK ☐ PLUG AND ABANDON ☐
TEMPORARILY ABANDON ☐ CHANGE PLANS ☐
PULL OR ALTER CASING ☐ MULTIPLE COMPL ☐
DOWNHOLE COMMINGLE ☐
OTHER: ☐

SUBSEQUENT REPORT OF:

REMEDIAL WORK ☐ ALTERING CASING ☐
COMMENCE DRILLING OPNS. ☐ P AND A ☐
CASING/CEMENT JOB ☐
OTHER: Monthly Report pursuant to Workover C-103 ☒

13. Describe proposed or completed operations. (Clearly state all pertinent details, and give pertinent dates, including estimated date of starting any proposed work). SEE RULE 19.15.7.14 NMAC. For Multiple Completions: Attach wellbore diagram of proposed completion or recompletion.

Report for the Month ending April 30, 2018 Pursuant to Workover C-103 for Linam AGI#1 and AGI#2

This is the seventy-second monthly submittal of data as agreed to between DCP and OCD relative to injection pressure, TAG temperature and casing annulus pressure for Linam AGI#1. Since the data for both wells provides the overall picture of the performance of the AGI system, the data for both wells is analyzed and presented herein even though that analysis is required only on a quarterly basis for AGI #2. The average TAG injection rate for AGI#1 for the operating period was 222,527 scf/hr (see Figure #1) and AGI#2 had no flow the entire month. The injection parameters being monitored for AGI #1 were as follows (see Figures #2, #3 & #4): Average TAG Injection Pressure: 1,618 psig, Average TAG Temperature: 95 °F, Average Annulus Pressure: 95 psig, Average Pressure Differential: 1,523 psig. Bottom Hole measuring sensors data provided the average BH pressure for the period of 4,080 psig and BH temperature was 131 °F.

Although AGI#2 was not operated in January, values representing static TAG in the inactive well are as follows (see Figures #5, #6 & #7): Average Injection Pressure: 1158 psig, Average TAG Temperature: 63 °F, Average Annulus Pressure: 224 psig, Average Pressure Differential: 934 psig.

The Linam AGI#1 and AGI #2 wells are serving as safe, effective and environmentally-friendly system to dispose of Class II wastes consisting of H₂S and CO₂. The two wells provide the required redundancy to the plant that allows for operation with disposal to either or both wells. I hereby certify that the information above is true and complete to the best of my knowledge and belief.

SIGNATURE *Alberto A. Gutierrez* TITLE Consultant to DCP Midstream/ Geolex, Inc. DATE 5/8/2018
Type or print name Alberto A. Gutierrez, RG E-mail address: aag@geolex.com PHONE: 505-842-8000

For State Use Only

APPROVED BY: *MS Brown* TITLE Accepted for Record Only DATE 5/16/2018
Conditions of Approval (if any):

Figure #1: Linam AGI#1 and #2 Combined TAG Injection Flow Rate

For the month of April 2018, AGI #1 was used exclusively, and AGI #2 was shut-in. Replacement flow meters to allow accurate flow measurements of each well when both are operating are still on order and until such time as they are installed, only one well will be operated at a time.

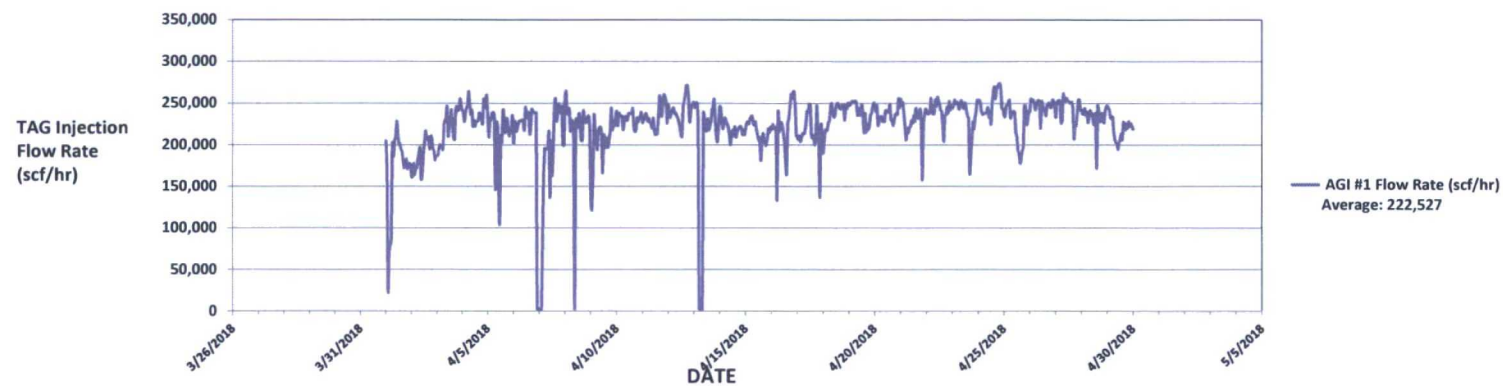


Figure #2: Linam AGI #1 Surface TAG Injection Pressure and Annular Pressure

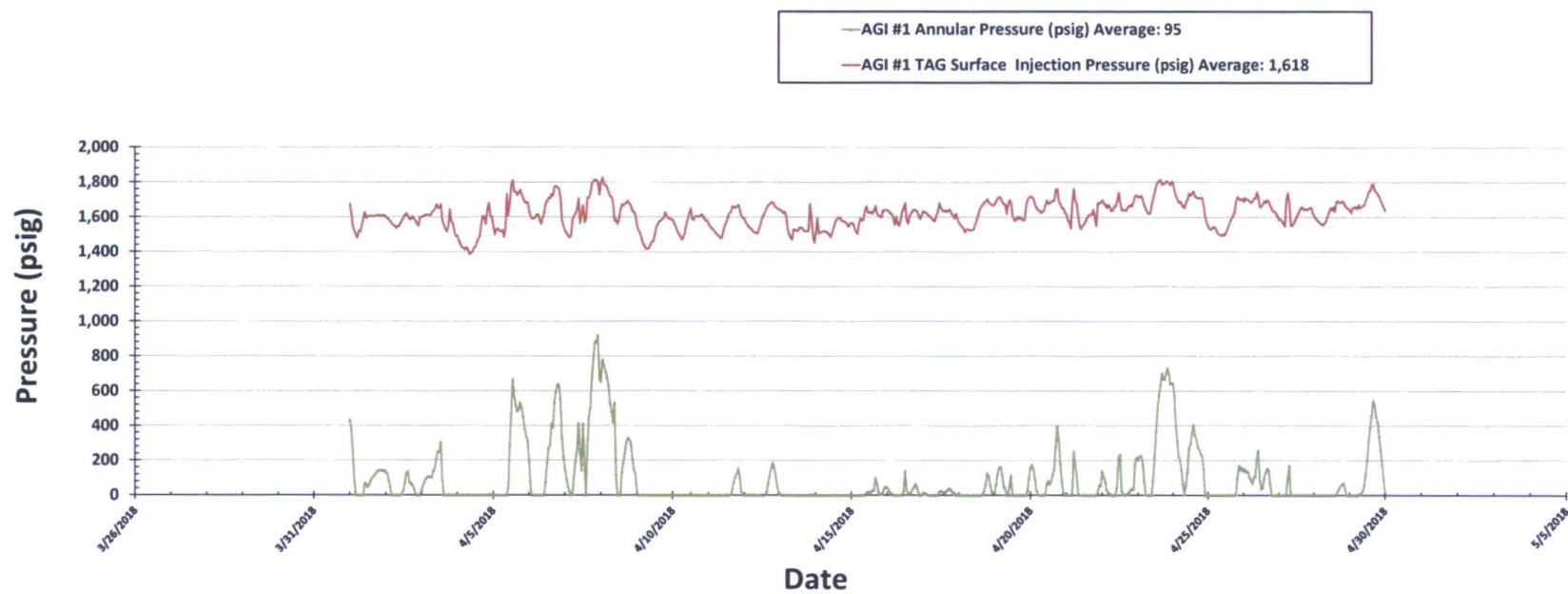


Figure #3: Linam AGI #1 TAG Injection Pressure, Casing Annulus Pressure and TAG Injection Temperature

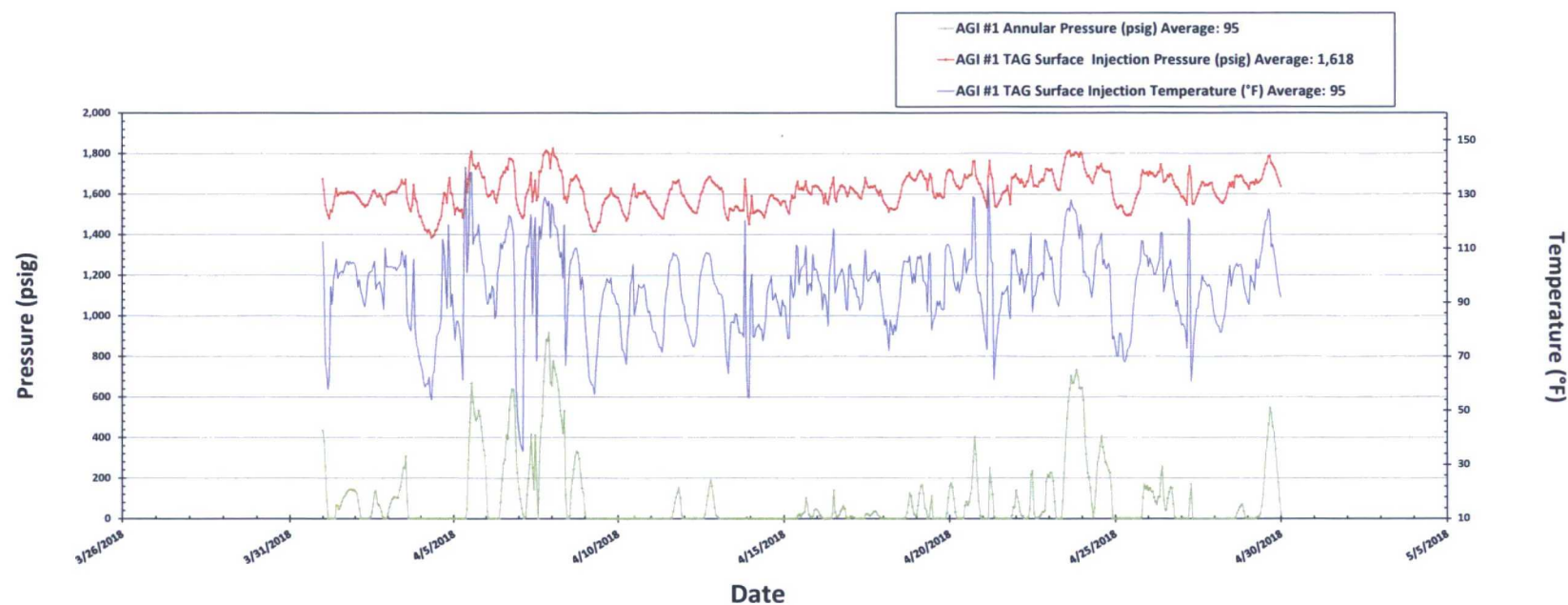


Figure #4: Linam AGI #1 TAG Injection Pressure and Casing Annular Pressure Differential (psig)

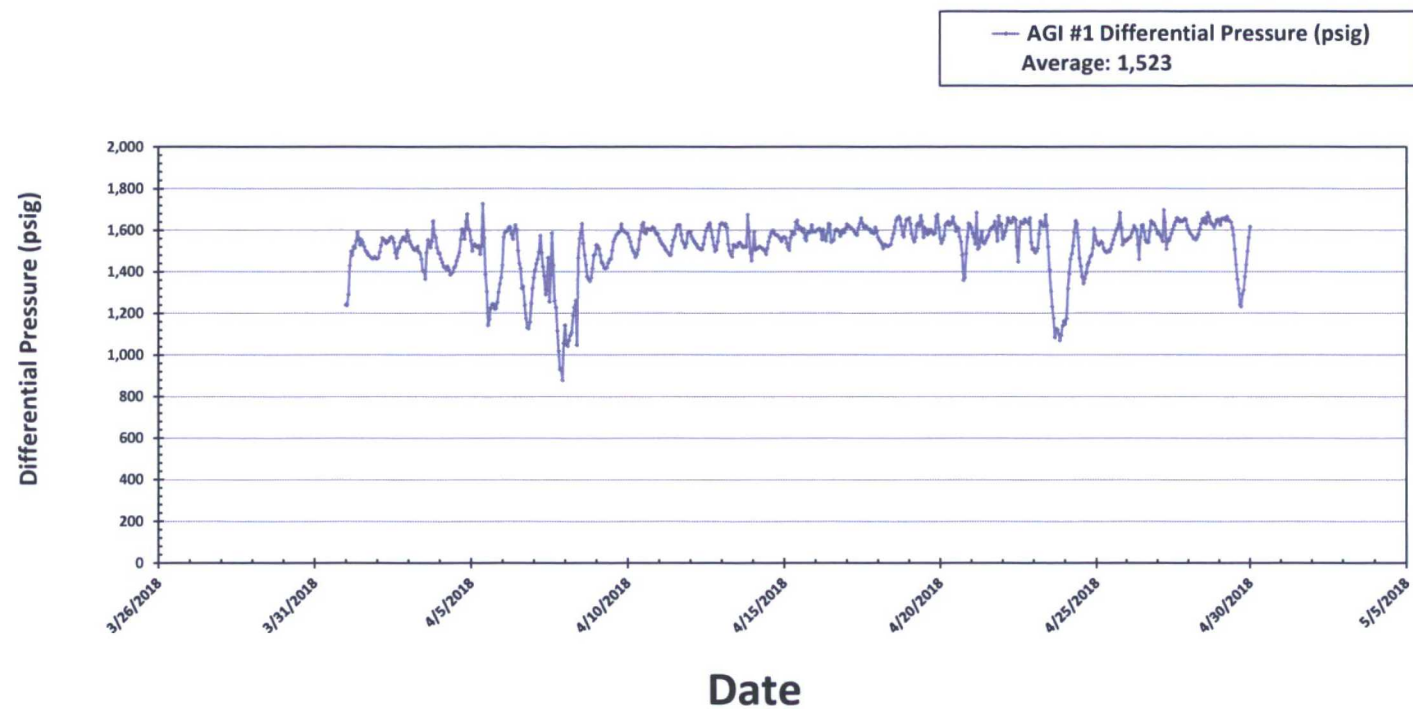


Figure #5: Linam AGI #2 Injection and Casing Annulus Pressure

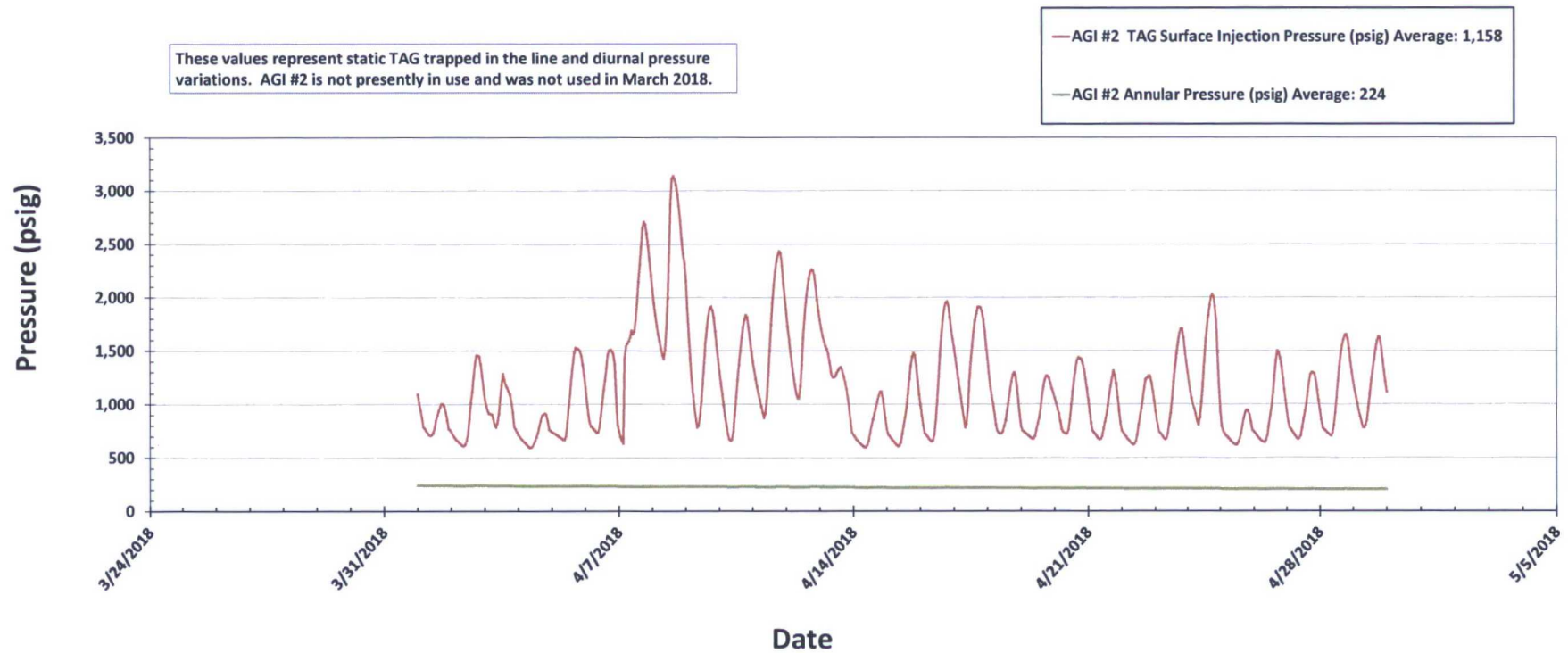


Figure #6: Linam AGI #2 TAG Injection Pressure, Casing Annulus Pressure and TAG Injection Temperature

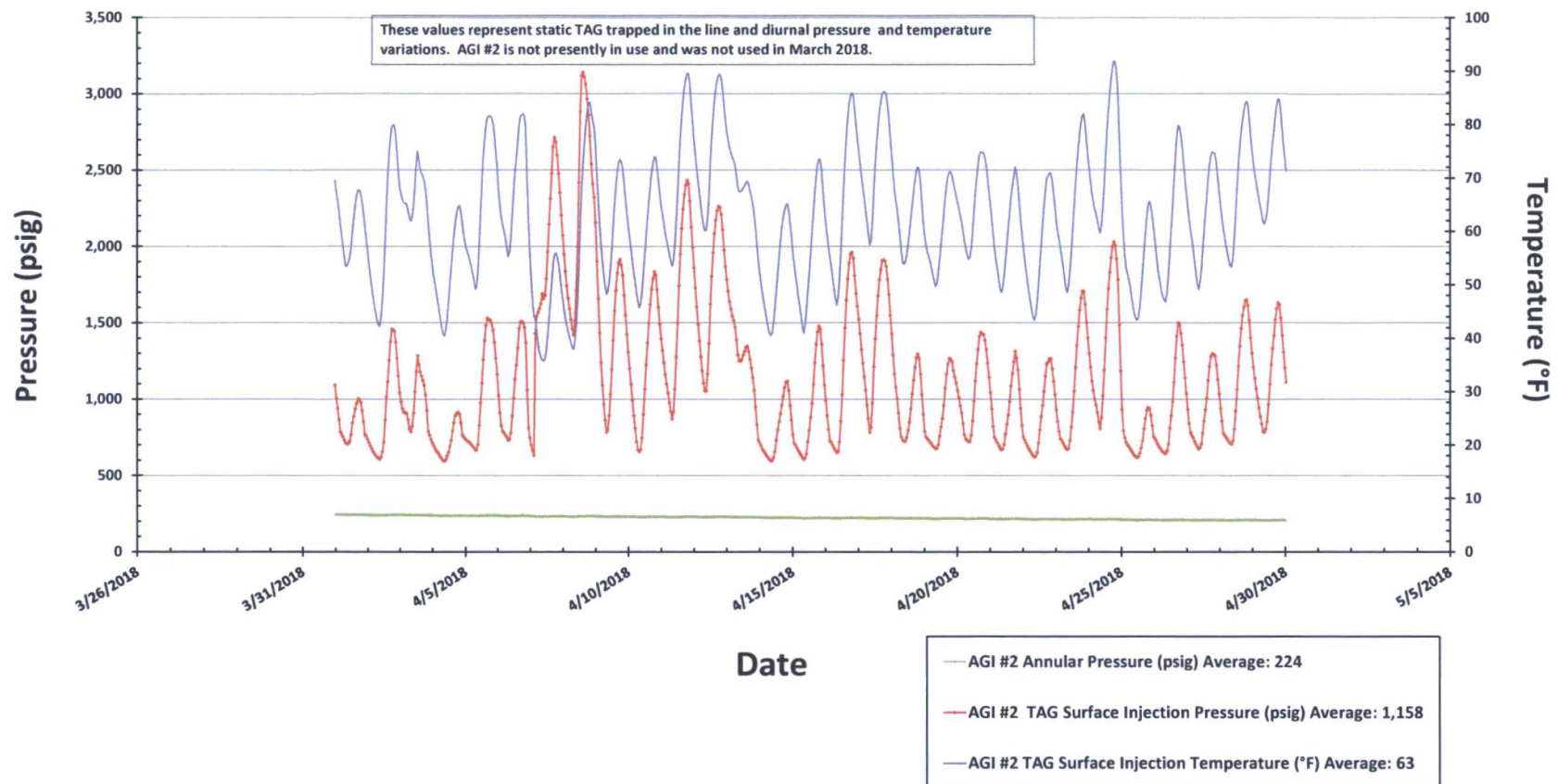


Figure #7: Linam AGI #2 TAG Injection Pressure and Casing Annular Pressure Differential (psig)

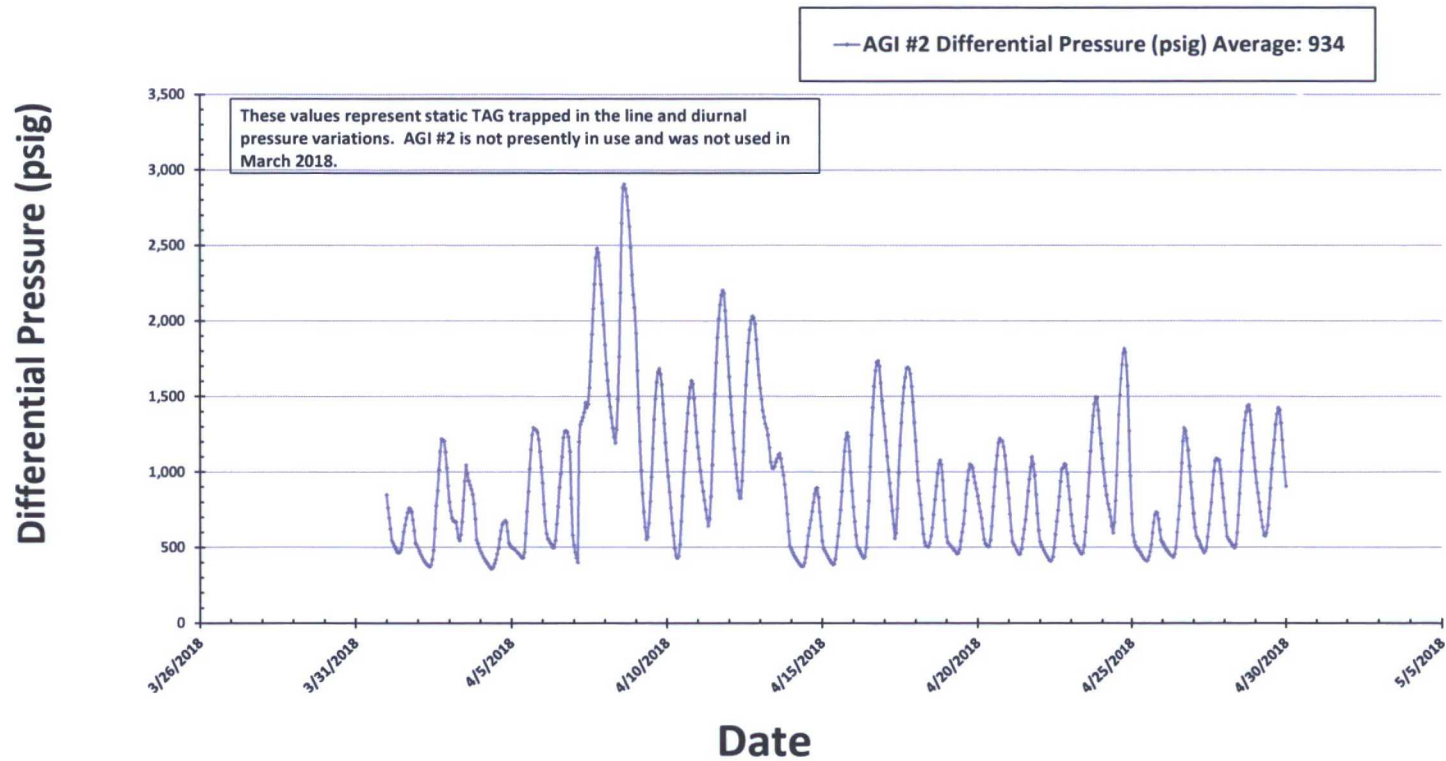


Figure #8: Linam AGI #1 Bottom Hole Pressure and Temperature

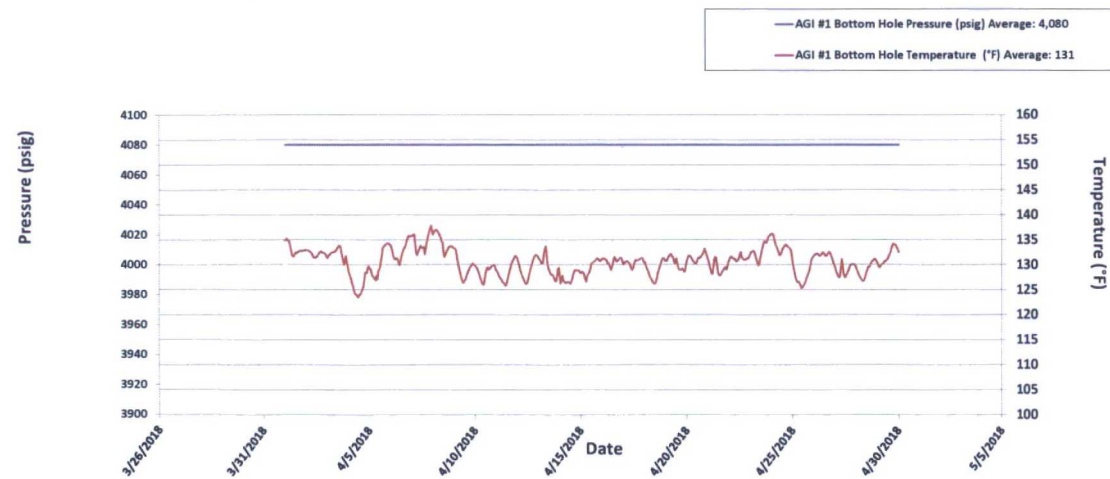


Figure 9: Linam AGI #1 Surface Injection Pressure and Bottom Hole Pressure

