

Submit 1 Copy To Appropriate District Office  
District I - (575) 393-6161  
1625 N. French Dr., Hobbs, NM 88240  
District II - (575) 748-1283  
811 S. First St., Artesia, NM 88210  
District III - (505) 334-6178  
1000 Rio Brazos Rd., Aztec, NM 87410  
District IV - (505) 476-3460  
1220 S. St. Francis Dr., Santa Fe, NM 87505

State of New Mexico  
Energy, Minerals and Natural Resources

Form C-103  
Revised July 18, 2013

**HOBBS OIL CONSERVATION DIVISION**  
1220 South St. Francis Dr.  
Santa Fe, NM 87505  
**JUN 20 2018**

|   |  |   |
|---|--|---|
| <b>SUNDRY NOTICES AND REPORTS ON WELLS</b><br>(DO NOT USE THIS FORM FOR PROPOSALS TO DRILL OR TO DEEPEN OR PLUG BACK TO A DIFFERENT RESERVOIR. USE "APPLICATION FOR PERMIT" (FORM C-101) FOR SUCH PROPOSALS.) |  | WELL API NO.<br>30-025-38576  |
| 1. Type of Well: Oil Well <input type="checkbox"/> Gas Well <input type="checkbox"/> Other: Acid Gas Injection <input checked="" type="checkbox"/>  |  | 5. Indicate Type of Lease<br>STATE <input checked="" type="checkbox"/> FEE <input type="checkbox"/> |
| 2. Name of Operator<br>DCP Midstream LP   |  | 6. State Oil & Gas Lease No.<br>V07530-0001   |
| 3. Address of Operator<br>370 17 <sup>th</sup> Street, Suite 2500, Denver, CO 80202   |  | 7. Lease Name or Unit Agreement Name<br>Linam AGI   |
| 4. Well Location<br>Unit Letter <u>K</u> : 1980 feet from the <u>South</u> line and 1980 feet from the <u>West</u> line<br>Section <u>30</u> Township <u>18S</u> Range <u>37E</u> NMPM County <u>Lea</u>      |  | 8. Well Number #1   |
| 11. Elevation (Show whether DR, RKB, RT, GR, etc.): 3736 GR   |  | 9. OGRID Number 36785   |
|   |  | 10. Pool name or Wildcat<br>AGI - Wolfcamp  |

12. Check Appropriate Box to Indicate Nature of Notice, Report or Other Data

NOTICE OF INTENTION TO:

PERFORM REMEDIAL WORK ☐ PLUG AND ABANDON ☐  
TEMPORARILY ABANDON ☐ CHANGE PLANS ☐  
PULL OR ALTER CASING ☐ MULTIPLE COMPL ☐  
DOWNHOLE COMMINGLE ☐  
CLOSED-LOOP SYSTEM ☐  
OTHER: ☐

SUBSEQUENT REPORT OF:

REMEDIAL WORK ☐ ALTERING CASING ☐  
COMMENCE DRILLING OPNS. ☐ P AND A ☐  
CASING/CEMENT JOB ☐  
OTHER: (Mechanical Integrity Test) ☒

13. Describe proposed or completed operations. (Clearly state all pertinent details, and give pertinent dates, including estimated date of starting any proposed work). SEE RULE 19.15.7.14 NMAC. For Multiple Completions: Attach wellbore diagram of proposed completion or recompletion.

The MIT was conducted after providing notice to NMOCD on Tuesday, June 19, 2018 at 10:00 am (MT). Kerry Fortner, (NMOCD) was on site to witness and approve the test. Below is a step-by-step summary of the MIT and observed results:

1. The annular space pressure between casing and tubing was 0 psig at the casing valve prior to the start of the MIT.
2. The annular space pressure was opened to a diesel line (pump) and a chart recorder was installed.
3. The calibrated pressure chart began recording the annular space pressure at 10:22 am.
4. At 10:36 am the pressure was slowly increased by pumping diesel from the truck to achieve a pressure of 560 psig.
5. When annulus space pressure reached 560 psig the valve to the pump truck was closed. The MIT began at 10:38 am.
6. The chart recorded the annular space pressure for 32 minutes.
7. At 11:10 am the annulus pressure was 540 psig, a loss of 20 psig (3.6% decrease).
8. The diesel was bled from the annulus to reduce the pressure to 0 psig and the chart recording was stopped.
9. Prior to disconnection from the truck, the annular pressure was increased to 300 psig for normal operations.

In addition to the MIT, a Bradenhead test was conducted by the NMOCD by monitoring and recording the outer annular space pressures. They remained unchanged during the MIT.

Please see the attached MIT pressure chart (approved by the NMOCD), calibration information, and Bradenhead test documentation.

I hereby certify that the information above is true and complete to the best of my knowledge and belief.

SIGNATURE Dale T Littlejohn  
Type or print name Dale T Littlejohn

TITLE Consultant to DCP Midstream  
E-mail address: dale@geolex.com

DATE 06/19/2018  
PHONE: (505)842-8000

For State Use Only

APPROVED BY: [Signature]  
Conditions of Approval (if any):

TITLE Compliance Officer Supervisor DATE 6/20/19

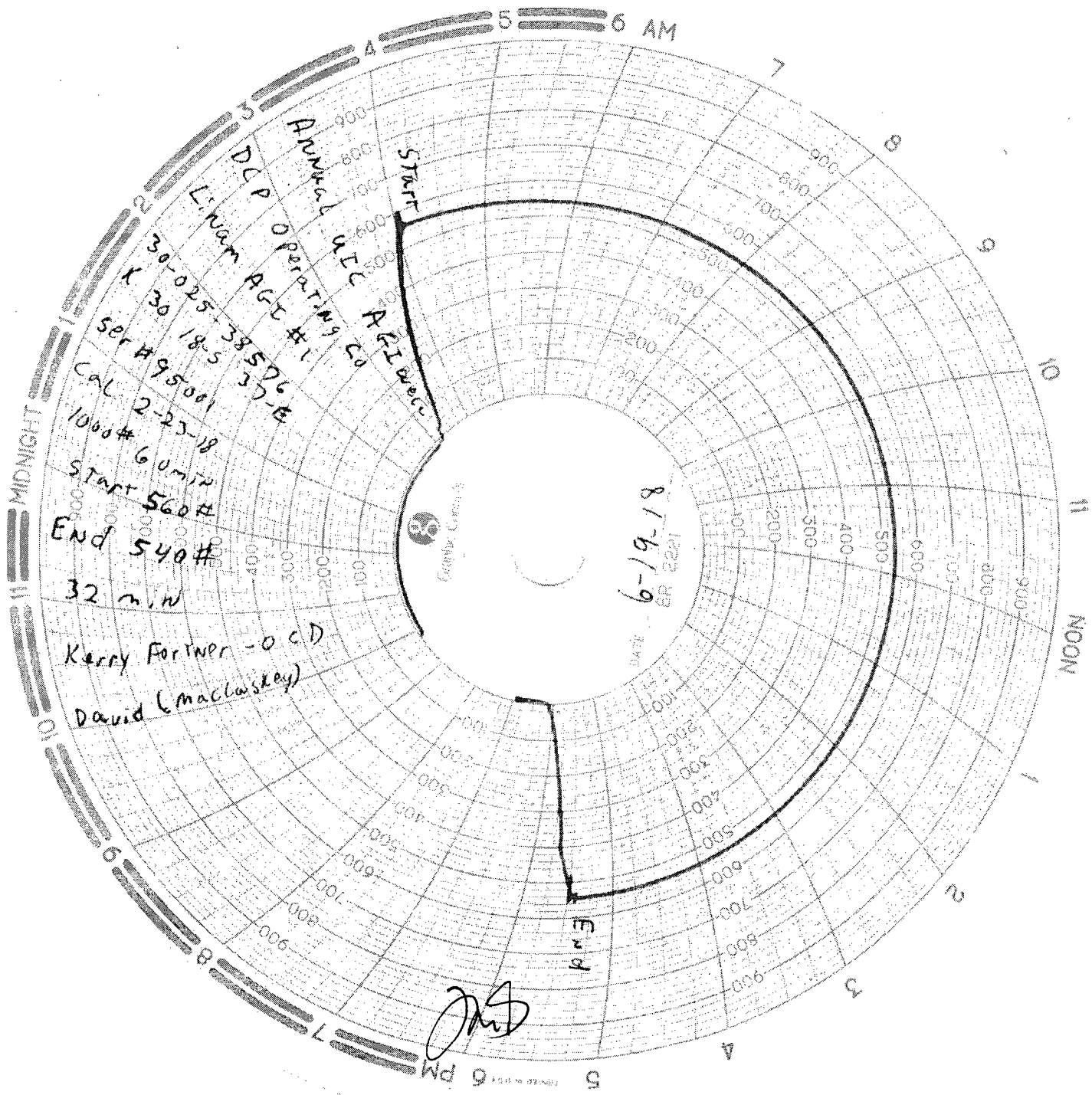


Chart witnessed By Dale Littlejohn  
w/Glx

State of New Mexico  
Energy, Minerals and Natural Resources Department  
Oil Conservation Division Hobbs District Office

BRADENHEAD TEST REPORT

|   |  |                                   |  |
|---|--|-----------------------------------|--|
| Operator Name<br><b>DLP Operating Company</b> |  | API Number<br><b>30-025-38576</b> |  |
| Property Name<br><b>Lipam AGI</b>             |  | Well No.<br><b>001</b>            |  |

Surface Location

|                      |                      |                         |                      |                          |                      |                          |                      |                      |
|----------------------|----------------------|-------------------------|----------------------|--------------------------|----------------------|--------------------------|----------------------|----------------------|
| UL - Lot<br><b>X</b> | Section<br><b>30</b> | Township<br><b>18-S</b> | Range<br><b>37-E</b> | Feet from<br><b>1980</b> | N/S Line<br><b>S</b> | Feet From<br><b>1980</b> | E/W Line<br><b>W</b> | County<br><b>LEA</b> |
|----------------------|----------------------|-------------------------|----------------------|--------------------------|----------------------|--------------------------|----------------------|----------------------|

Well Status

|                         |                      |                       |                        |                        |
|-------------------------|----------------------|-----------------------|------------------------|------------------------|
| TA'D Well<br><b>YES</b> | SHUT-IN<br><b>NO</b> | INJECTOR<br><b>IN</b> | PRODUCER<br><b>OIL</b> | DATE<br><b>5-19-18</b> |
|-------------------------|----------------------|-----------------------|------------------------|------------------------|

OBSERVED DATA

|                      | (A)Surf-Interm | (B)Interm(1) | (C)Interm(2) | (D)Prod Csg | (E)Tubing          |
|----------------------|----------------|--------------|--------------|-------------|--------------------|
| Pressure             | <b>16.2</b>    | <b>6.2</b>   | <b>←</b>     | <b>300</b>  | <b>1900</b>        |
| Flow Characteristics |                |              |              |             |                    |
| Pull                 | <b>Y/N</b>     | <b>Y/N</b>   | <b>Y/N</b>   | <b>Y/N</b>  | <b>CO2</b>         |
| Steady Flow          | <b>Y/N</b>     | <b>Y/N</b>   | <b>Y/N</b>   | <b>Y/N</b>  | <b>WTR</b>         |
| Surges               | <b>Y/N</b>     | <b>Y/N</b>   | <b>Y/N</b>   | <b>Y/N</b>  | <b>GAS</b>         |
| Down to nothing      | <b>Y/N</b>     | <b>Y/N</b>   | <b>Y/N</b>   | <b>Y/N</b>  | If applicable type |
| Gas or Oil           | <b>Y/N</b>     | <b>Y/N</b>   | <b>Y/N</b>   | <b>Y/N</b>  | fluid injected for |
| Water                | <b>Y/N</b>     | <b>Y/N</b>   | <b>Y/N</b>   | <b>Y/N</b>  | Waterflood         |

Remarks: Please state for each string (A,B,C,D,E) pertinent information regarding bleed down or continuous build up if applies.

**Left 300# on prod csg**  
**Pressure on Surface Int. Did not change**  
**than Test. JWB**

|   |        |                           |  |
|---|--------|---------------------------|--|
| Signature:                                      |        | OIL CONSERVATION DIVISION |  |
| Printed name: <b>Dale T. Littlejohn (Galex)</b> |        | Entered into RBDMS        |  |
| Title:  |        | Re-test                   |  |
| E-mail Address:                                 |        |                           |  |
| Date: <b>5-19-18</b>                            | Phone: |                           |  |
| Witness: <b>Kerry Fortner - OCD</b>             |        |                           |  |

**399-3221**

# MACLASKEY OILFIELD SERVICES

5900 WEST LOVINGTON HWY. HOBBS, N.M. 83240  
505-395-1016

THIS IS TO CERTIFY THAT:

DATE: 2-23-18

I, Albert Rodriguez METER TECHNICIAN FOR MACLASKEY OILFIELD  
SERVICES, INC. HAS CHECKED THE CALIBRATION ON THE FOLLOWING  
INSTRUMENT. 1000 PRESSURE RECORDER

SERIAL NUMBER

95001

TESTED AT THESE POINTS.

| PRESSURE <u>500</u> |            |           |
|---------------------|------------|-----------|
| TEST                | AS FOUND   | CORRECTED |
| <u>0</u>            | <u>100</u> | <u>/</u>  |
| <u>100</u>          | <u>200</u> | <u>/</u>  |
| <u>200</u>          | <u>300</u> | <u>/</u>  |
| <u>300</u>          | <u>400</u> | <u>/</u>  |
| <u>400</u>          | <u>500</u> | <u>✓</u>  |

| PRESSURE <u>1000</u> |             |          |
|----------------------|-------------|----------|
| TEST                 | AS FOUND    | CORRECT  |
| <u>500</u>           | <u>600</u>  | <u>/</u> |
| <u>600</u>           | <u>700</u>  | <u>/</u> |
| <u>700</u>           | <u>800</u>  | <u>/</u> |
| <u>800</u>           | <u>900</u>  | <u>/</u> |
| <u>900</u>           | <u>1000</u> | <u>✓</u> |

REMARKS:

\_\_\_\_\_  
\_\_\_\_\_  
\_\_\_\_\_

SIGNED:

Adit R.