

DISTRICT I
1625 N. French Dr., Hobbs, NM 88240
Phone: (575) 393-6161 Fax: (575) 393-0720

DISTRICT II
811 S. First St., Artesia, NM 88210
Phone: (575) 748-1283 Fax: (575) 748-9720

DISTRICT III
1000 Rio Brazos Road, Aztec, NM 87410
Phone: (505) 334-6178 Fax: (505) 334-6170

DISTRICT IV
1220 S. St. Francis Dr., Santa Fe, NM 87505
Phone: (505) 476-3460 Fax: (505) 476-3462

State of New Mexico
Energy, Minerals & Natural Resources Department
OIL CONSERVATION DIVISION
1220 South St. Francis Dr.
Santa Fe, New Mexico 87505

HOBBS OCD
AUG 06 2018
RECEIVED

Form C-102
Revised August 1, 2011
Submit one copy to appropriate District Office

AMENDED REPORT

WELL LOCATION AND ACREAGE DEDICATION PLAT

API Number 30-025-45077	Pool Code 2209 98204	Pool Name BELL LAKE Antelope Ridge, Bone Spring, HOLTZ
Property Code 310706	Property Name BELL LAKE UNIT SOUTH	Well Number 204H
OGRID No. 12361	Operator Name KAISER-FRANCIS OIL COMPANY	Elevation 3630'

Surface Location

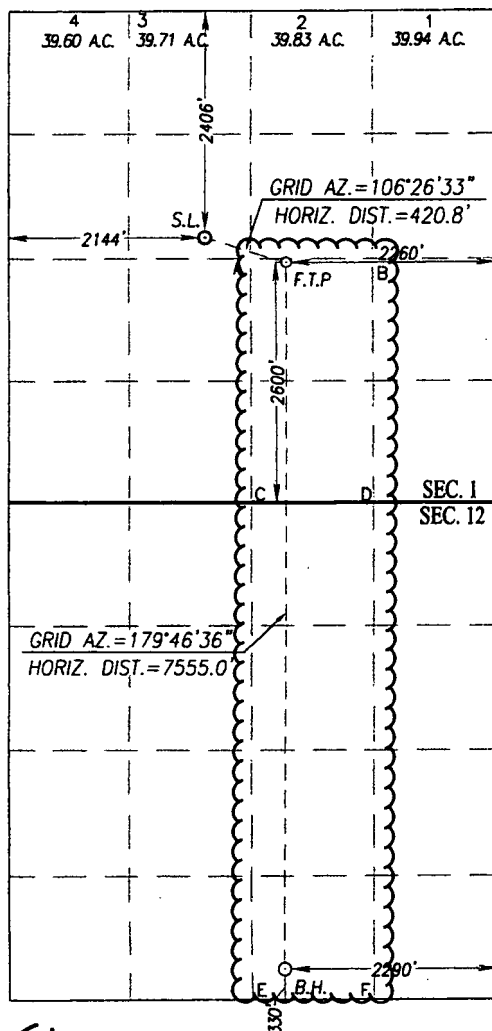
UL or lot No.	Section	Township	Range	Lot Idn	Feet from the	North/South line	Feet from the	East/West line	County
F	1	24-S	33-E	F	2406	NORTH	2144	WEST	LEA

Bottom Hole Location If Different From Surface

UL or lot No.	Section	Township	Range	Lot Idn	Feet from the	North/South line	Feet from the	East/West line	County
O	12	24-S	33-E	O	330	SOUTH	2290	EAST	LEA

Dedicated Acres	Joint or Infill	Consolidation Code	Order No. R-14600
-----------------	-----------------	--------------------	----------------------

NO ALLOWABLE WILL BE ASSIGNED TO THIS COMPLETION UNTIL ALL INTERESTS HAVE BEEN CONSOLIDATED OR A NON-STANDARD UNIT HAS BEEN APPROVED BY THE DIVISION



SCALE: 1"=2000'

<p>GEODETTIC COORDINATES NAD 83 NME SURFACE LOCATION Y= 454613.8 N X= 790411.6 E LAT.=32.247240° N LONG.=103.527680° W</p> <p>FIRST TAKE POINT NAD 83 NME Y= 454353.2 N X= 791294.6 E LAT.=32.246506° N LONG.=103.524830° W</p>	<p>GEODETTIC COORDINATES NAD 27 NME SURFACE LOCATION Y= 454554.8 N X= 749227.7 E LAT.=32.247116° N LONG.=103.527201° W</p> <p>FIRST TAKE POINT NAD 27 NME Y= 454294.2 N X= 750110.7 E LAT.=32.246382° N LONG.=103.524352° W</p>
---	---

CORNER COORDINATES TABLE
NAD 27 NME

A - Y= 454332.2 N, X= 749727.5 E
B - Y= 545336.7 N, X= 751048.7 E
C - Y= 451693.5 N, X= 749744.3 E
D - Y= 451698.2 N, X= 751067.3 E
E - Y= 446409.2 N, X= 749789.4 E
F - Y= 446416.0 N, X= 751110.6 E

CORNER COORDINATES TABLE
NAD 83 NME

A - Y= 454391.2 N, X= 790911.4 E
B - Y= 454395.7 N, X= 792232.6 E
C - Y= 451752.4 N, X= 790928.3 E
D - Y= 451757.1 N, X= 792251.3 E
E - Y= 446468.0 N, X= 790973.7 E
F - Y= 446474.8 N, X= 792294.9 E

<p>BOTTOM HOLE LOCATION NAD 83 NME Y= 446799.7 N X= 791324.0 E LAT.=32.225743° N LONG.=103.524919° W</p>	<p>BOTTOM HOLE LOCATION NAD 27 NME Y= 446740.9 N X= 750139.7 E LAT.=32.225619° N LONG.=103.524442° W</p>
--	--

OPERATOR CERTIFICATION

I hereby certify that the information herein is true and complete to the best of my knowledge and belief, and that this organization either owns a working interest or unleased mineral interest in the land including the proposed bottom hole location or has a right to drill this well at this location pursuant to a contract with an owner of such mineral or working interest, or to a voluntary pooling agreement or a compulsory pooling order heretofore entered by the division.

Melanie J. Wilson 2/15/18
Signature Date

Melanie J. Wilson

Printed Name

mjp1692@gmail.com
E-mail Address

SURVEYOR CERTIFICATION

I hereby certify that the well location shown on this plat was plotted from field notes of actual surveys made by me or under my supervision, and that the same is true and correct to the best of my belief.

Date of Survey
Signature & Seal of Professional Surveyor:

NEW MEXICO
REGISTERED SURVEYOR
3239
Ronald J. Eidson
Certificate Number 12641
Ronald J. Eidson 3239
Date 11/01/2017

ACK

JWSC W.O.: 17.11.1053

SL K2