

Conditions of Approval (if any):

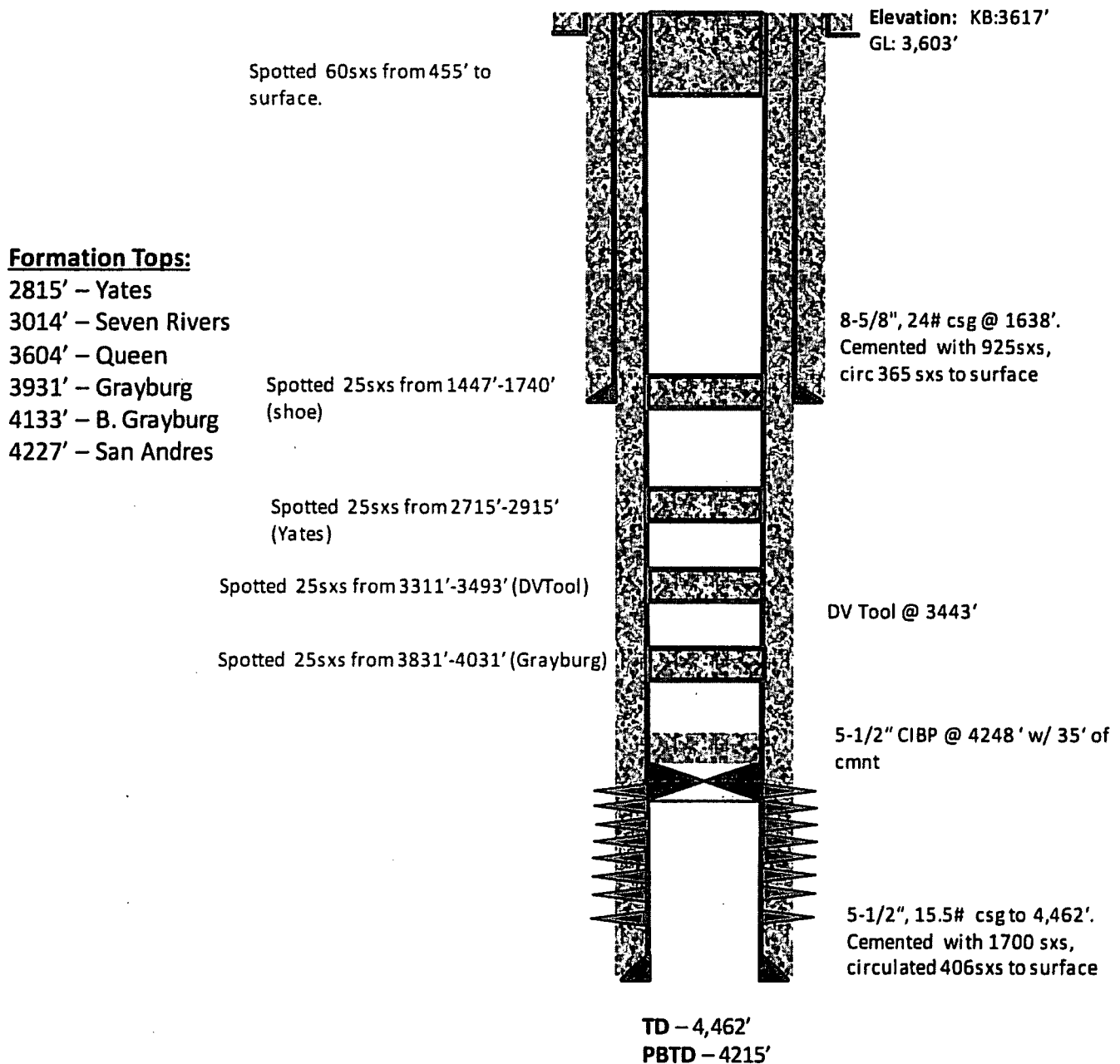


SHU 151 P&A Wellbore Diagram

*Note: Diagram not to scale

API (10):

30-025-28354



Perforation Summary:

Plugged Back:

4242'-80', 4301'-4320', 4324'-4338', 4342'-
4351', 4359'-4366', 4372'-4382', 4400'-4416'