

District I  
1625 N. French Dr., Hobbs, NM 88240  
Phone: (575) 393-6161 Fax: (575) 393-0720  
District II  
811 S. First St., Artesia, NM 88210  
Phone: (575) 748-1283 Fax: (575) 748-9720  
District III  
1000 Rio Brazos Road, Aztec, NM 87410  
Phone: (505) 334-6178 Fax: (505) 334-6170  
District IV  
1220 S. St. Francis Dr., Santa Fe, NM 87505  
Phone: (505) 476-3460 Fax: (505) 476-3462

State of New Mexico  
Energy, Minerals & Natural Resources Department  
OIL CONSERVATION DIVISION  
1220 South St. Francis Dr.  
Santa Fe, NM 87505

Form C-102  
Revised August 1, 2011  
Submit one copy to appropriate  
District Office  
☐ AMENDED REPORT

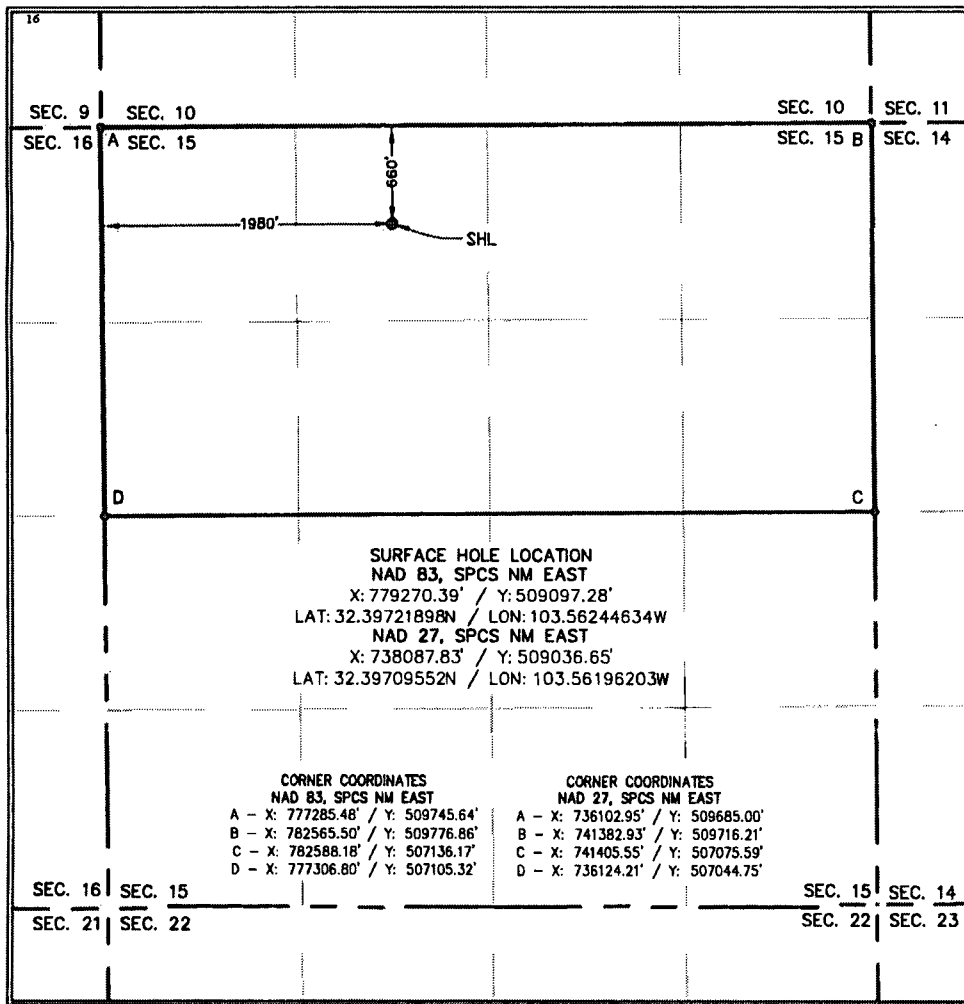
SEP 06 2018

RECEIVED

WELL LOCATION AND ACREAGE DEDICATION PLAT

<sup>1</sup> API Number 30-025-28096		<sup>2</sup> Pool Code 490650		<sup>3</sup> Pool Name BOOTLEG RIDGE; MORROW EAST (GAS)	
<sup>4</sup> Property Code		Property Name FEDERAL 15 B COM			<sup>6</sup> Well Number 1
<sup>7</sup> OGRID No. 372098		<sup>8</sup> Operator Name MARATHON OIL PERMIAN LLC			<sup>9</sup> Elevation 3548'
<sup>10</sup> Surface Location					
UL or lot no. C	Section 15	Township T22S	Range R33E	Lot Idn	Feet from the 660
		North/South line NORTH		Feet from the 1980	East/West line WEST
		County LEA			
<sup>11</sup> Bottom Hole Location If Different From Surface					
UL or lot no.	Section	Township	Range	Lot Idn	Feet from the
		North/South line		Feet from the	East/West line
		County			
<sup>12</sup> Dedicated Acres 320.00		<sup>13</sup> Joint or Infill		<sup>14</sup> Consolidation Code	
				<sup>15</sup> Order No.	

No allowable will be assigned to this completion until all interests have been consolidated or a non-standard unit has been approved by the division.



**17 OPERATOR CERTIFICATION**  
I hereby certify that the information contained herein is true and complete to the best of my knowledge and belief, and that this organization either owns a working interest or unleased mineral interest in the land including the proposed bottom hole location or has a right to drill this well at this location pursuant to a contract with an owner of such a mineral or working interest, or to a voluntary pooling agreement or a compulsory pooling order heretofore entered by the division.

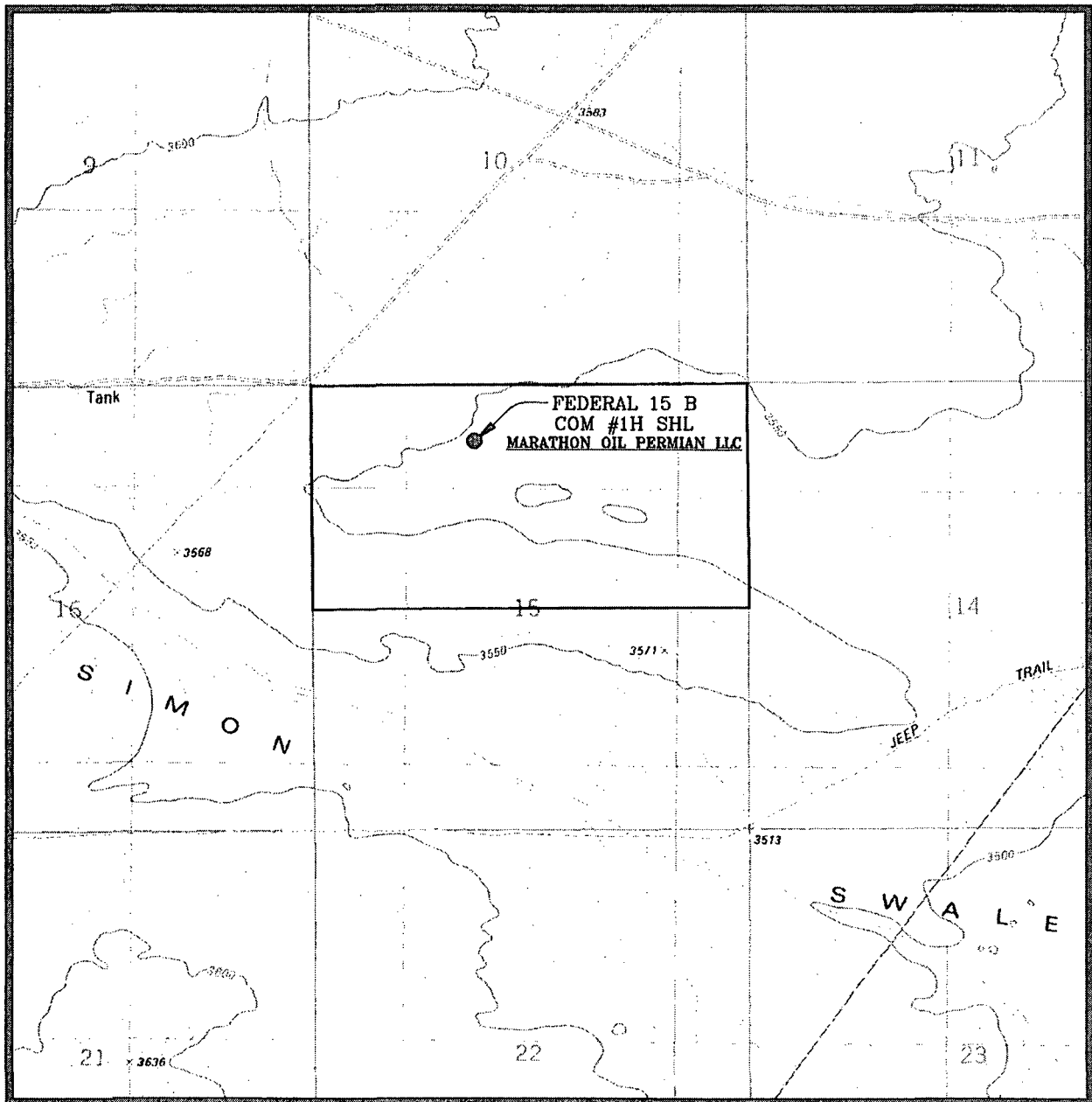
Signature: *[Signature]* Date: 09/06/2018  
Printed Name: Melissa Szudera  
E-mail Address: mszudera@marathonoil.com

**18 SURVEYOR CERTIFICATION**  
I hereby certify that the well location shown on this plat was plotted from field notes of actual surveys made by me or under my supervision, and that the same is true and correct to the best of my belief.

SEPTEMBER 05, 2018  
Date of Survey  
Signature and Seal of Professional Surveyor: *[Signature]*  
Certificate Number: 21653  
LLOYD P. SHORT  
SHEET 1 OF 2

1	09/04/2018	DEF
REV.	DATE	BY

# LOCATION VERIFICATION MAP



SEC. 15 TWP. 22-S RGE. 33-E  
SURVEY: N.M.P.M.  
COUNTY: LEA  
DESCRIPTION: 660' FNL & 1980' FWL  
ELEVATION: 3548'  
OPERATOR: MARATHON OIL PERMIAN LLC  
LEASE: FEDERAL 15 B COM  
U.S.G.S. TOPOGRAPHIC MAP: GRAMA RIDGE, N.M.

SCALE: 1" = 2000'  
CONTOUR INTERVAL = 10'

SHEET 2 OF 2

PREPARED BY:  
R-SQUARED GLOBAL, LLC  
1309 LOUISVILLE AVENUE, MONROE, LA 71201  
318-323-6000 OFFICE  
JOB No. R3948\_001