

DISTRICT I

P.O. Box 1980, Hobbs, NM 88241-1980

DISTRICT II

P.O. Box Drawer DD, Artesia, NM 88211-0719

DISTRICT III

1000 Rio Brazos Rd., Aztec, NM 87410

DISTRICT IV

P.O. Box 2088, Santa Fe, NM 87504-2088

State of New Mexico

Energy, Minerals and Natural Resources Department

OIL CONSERVATION DIVISION

P.O. Box 2088

Santa Fe, New Mexico 87504-2088

Form C-101

Revised February 10, 1999

Instructions on back
Submit to Appropriate District Office
State Lease - 6 Copy
Fee Lease - 5 Copy

☐ AMENDED REPORT

APPLICATION FOR PERMIT TO DRILL, RE-ENTER, DEEPEN, PLUGBACK, OR ADD A ZONE

¹ Operator Name and Address CHEVRON USA INC 15 SMITH RD, MIDLAND, TX 79705		² OGRID Number 4323
		³ API Number 30-025-25257
⁴ Property Code 2737	⁵ Property Name VIVIAN	⁶ Well No. 10

⁷ Surface Location

Ul or lot no.	Section	Township	Range	Lot.Idn	Feet From The	North/South Line	Feet From The	East/West Line	County
B	30	22-S	38-E		800'	NORTH	2250'	EAST	LEA

⁸ Proposed Bottom Hole Location If Different From Surface

Ul or lot no.	Section	Township	Range	Lot.Idn	Feet From The	North/South Line	Feet From The	East/West Line	County
⁹ Proposed Pool 1 PADDOCK					¹⁰ Proposed Pool 2				

¹¹ Work Type Code P	¹² WellType Code O	¹³ Rotary or C.T. ROTARY	¹⁴ Lease Type Code P	¹⁵ Ground Level Elevation
¹⁶ Multiple No	¹⁷ Proposed Depth 7588'	¹⁸ Formation PADDOCK	¹⁹ Contractor	²⁰ Spud Date 5/1/2006

²¹ Proposed Casing and Cement Program

SIZE OF HOLE	SIZE OF CASING	WEIGHT PER FOOT	SETTING DEPTH	SACKS OF CEMENT	EST. TOP
NO CHANGE					

²² Describe the proposed program. If this application is to DEEPEN or PLUG BACK give the data on the present productive zone and proposed new productive zone. Describe the blowout prevention program, if any. Use additional sheets if necessary.

CHEVRON U.S.A. INC. INTENDS TO RECOMLETE THE SUBJECT WELL FROM THE BRUNSON SOUTH ABO, TO THE PADDOCK RESERVOIR. THE WELL IS CURRENTLY SHUT-IN WITH ABO PERFS OPEN & HAS NOT SHOWED PRODUCTION SINCE JULY OF 2005.

A PIT WILL NOT BE USED FOR THIS RECOMPLETION. A STEEL FRAC TANK WILL BE UTILIZED.

THE CURRENT AND PROPOSED WELLBORE DIAGRAMS, AND THE INTENDED PROCEDURE IS ATTACHED FOR YOUR APPROVAL.

Permit Expires 1 Year From Approval

Date Unless Drilling Underway

Plugback

²³ I hereby certify that the rules and regulations of the Oil Conservation Division have been complied with and that the information given above is true and complete to the best of my knowledge and belief.		OIL CONSERVATION DIVISION	
Signature <i>Denise Pinkerton</i>		Approved By: <i>[Signature]</i>	
Printed Name Denise Pinkerton		Title: PETROLEUM ENGINEER	
Title Regulatory Specialist		Approval Date: MAY 04 2006	Expiration Date:
Date 4/25/2006	Telephone 432-687-7375	Conditions of Approval: Attached <input type="checkbox"/>	

Vivian #10
API #30-025-25257
800' FNL & 2250' FEL
S30, T22S, R38E
Paddock
Lea County, New Mexico

4/17/2006

COMPLETION PROCEDURE:

Use 8.6 ppg brine water.

1. **Complete if applicable:** Displace flowline w/ fresh water. Have Field Specialist close valve at header. Pressure test line according to type. All polypipe (SDR7 and SDR11) will be tested to 100 psi. All steel lines will be tested to 500 psi. If a leak is found, contact Donnie Ives for repair/replacement. If tests good, bleed off pressure and open valve at header. Document this process in the morning report.
2. MIRU Key PU & RU. NDWH. Unseat pump and POOH w/ rods & pump (see Tbg Detail). NUBOP. Test BOP when possible. POOH w/ 2-3/8" tbg & LD. Send equipment in for inspection.
3. PU & RIH w/ 6-1/4" bit on 2-7/8" WS to 6560'. POOH & LD bit.
4. MIRU WL. RIH w/ 7" CIBP & set @ 6549'. Dump 30' of cement on CIBP. POOH. RIH w/ 7" CIBP & set @ 6290'. Dump 30' of cement on CIBP. Load and test csg to 500 psi.
5. RIH w/ GR & 3-1/8" slick guns to perforate the following intervals w/ 4 JSPF, 120 degree phasing and premium charges tied back Welex's Compensated Density Neutron Log dated 5/2/76. RD Baker Atlas WL.

Top Perf	Bottom Perf	Net Feet	Total Holes
5125	5149	24	48

6. RIH w/ 7" treating pkr on 2-7/8" WS. Set pkr @ 5050'. Load and test BS to 500 psi.
7. MIRU DS. Acidize perms w/ 2,500 gals 20% NEFE HCl acid starting at a max rate of 1/2 BPM & 2500 psi surface pressure. **Acidize very gently as more of a soak to begin with and increase rate as the formation begins to breakdown not to exceed 4 bpm.** Displace acid w/ 8.6# brine to top perf. Record ISIP, 5, and 10 SIP. RD DS.
8. SI well for 2 hrs for acid to spend. RU swab and swab back load before SION if possible. Record volumes, pressures, & fluid levels. Discuss results with Engineering.
9. POOH w/ pkr and LD. RIH w/ 2-3/8" production tbg & hang off as per ALS recommendation. NDBOP NUWH. RIH w/ rods and pump as per ALS.
10. RD Key PU & RU. Turn well over to production. Contact Lease Operator and inform them that the well is ready for operation.

Well: **Vivian #10**

Field: **Paddock**

Reservoir: **Paddock**

Location:
800'-FNL & 2250'-FEL
Section: 30
Township: 22S
Range: 38E
County: LEA, NM.

Elevations:
GL:
DF:
KB: 12'

Proposed
Wellbore Diagram

Well ID Info: 45290
Refno: EO9346
API No: 3002525257
L5/L6: UCU862300
Spud Date:
Compl. Date:

Surf. Csg:
Size 9 5/8
Weight 36#
Set @ 1194'
With: 350 sxs
Hole Size:
Circ: Yes
TOC @ Surface

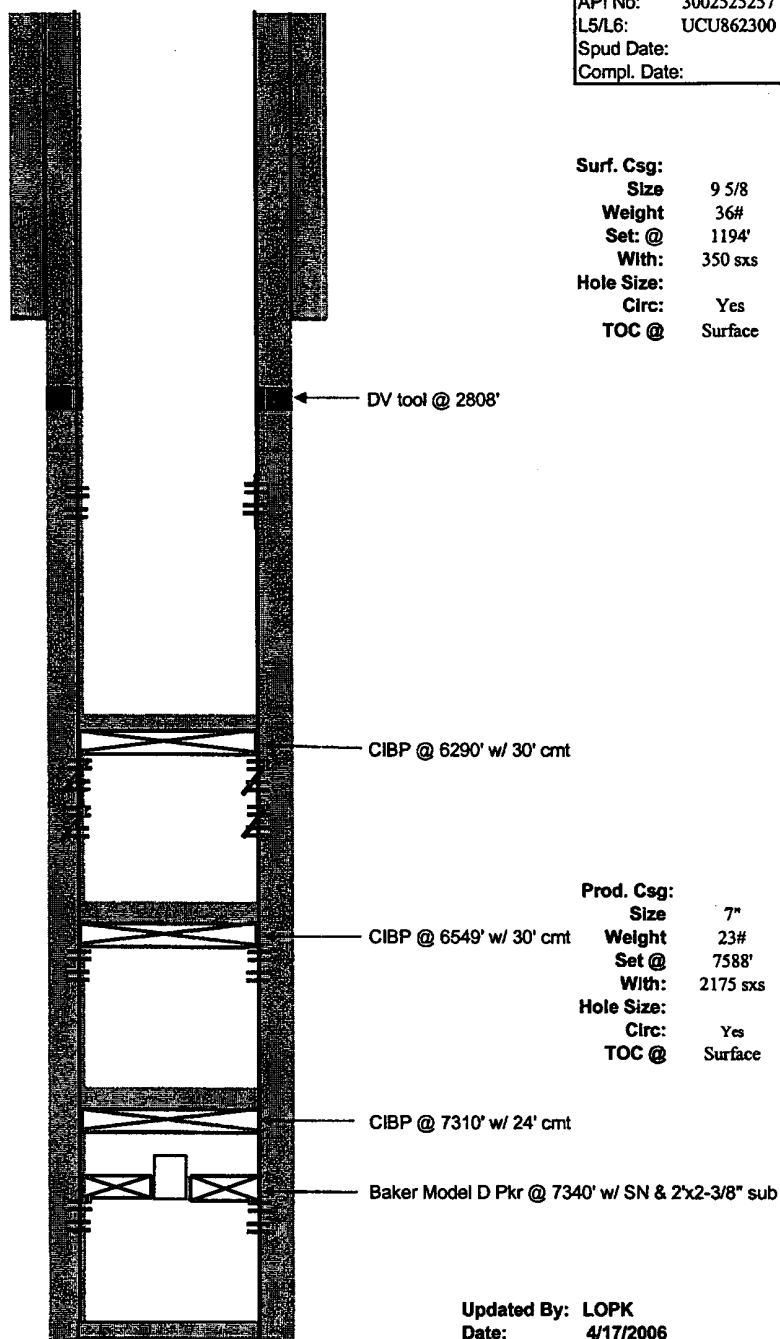
Paddock
Perfs: **Status**
5120'-5150' open

Drinkard
Perfs: **Status**
6310'-6476' cmt sqz

Abo
Perfs: **Status**
6569'-7245' closed

Granite Wash
Perfs: **Status**
7392'-7398' closed

PBTD: 6260'
TD: 7588'



Updated By: LOPK
Date: 4/17/2006

DISTRICT I

P.O. Box 1980, Hobbs, NM 88241-1980

DISTRICT II

P.O. Box Drawer DD, Artesia, NM 88211-0719

DISTRICT III

1000 Rio Brazos Rd., Aztec, NM 87410

DISTRICT IV

P.O. Box 2088, Santa Fe, NM 87504-2088

State of New Mexico
Energy, Minerals and Natural Resources Department**OIL CONSERVATION DIVISION**P.O. Box 2088
Santa Fe, New Mexico 87504-2088

Form C-102

Revised February 10, 199

Instructions on bac

Submit to Appropriate District Office

State Lease - 4 Copie

Fee Lease - 3 Copie

☐ AMENDED REPORT**WELL LOCATION AND ACREAGE DEDICATION PLAT**

¹ API Number 30-025-25257	² Pool Code 49210	³ Pool Name PADDOCK
⁴ Property Code 2737	⁵ Property Name VIVIAN	⁶ Well No. 10
⁷ OGRID Number 4323	⁸ Operator Name CHEVRON USA INC	⁹ Elevation

¹⁰ Surface Location

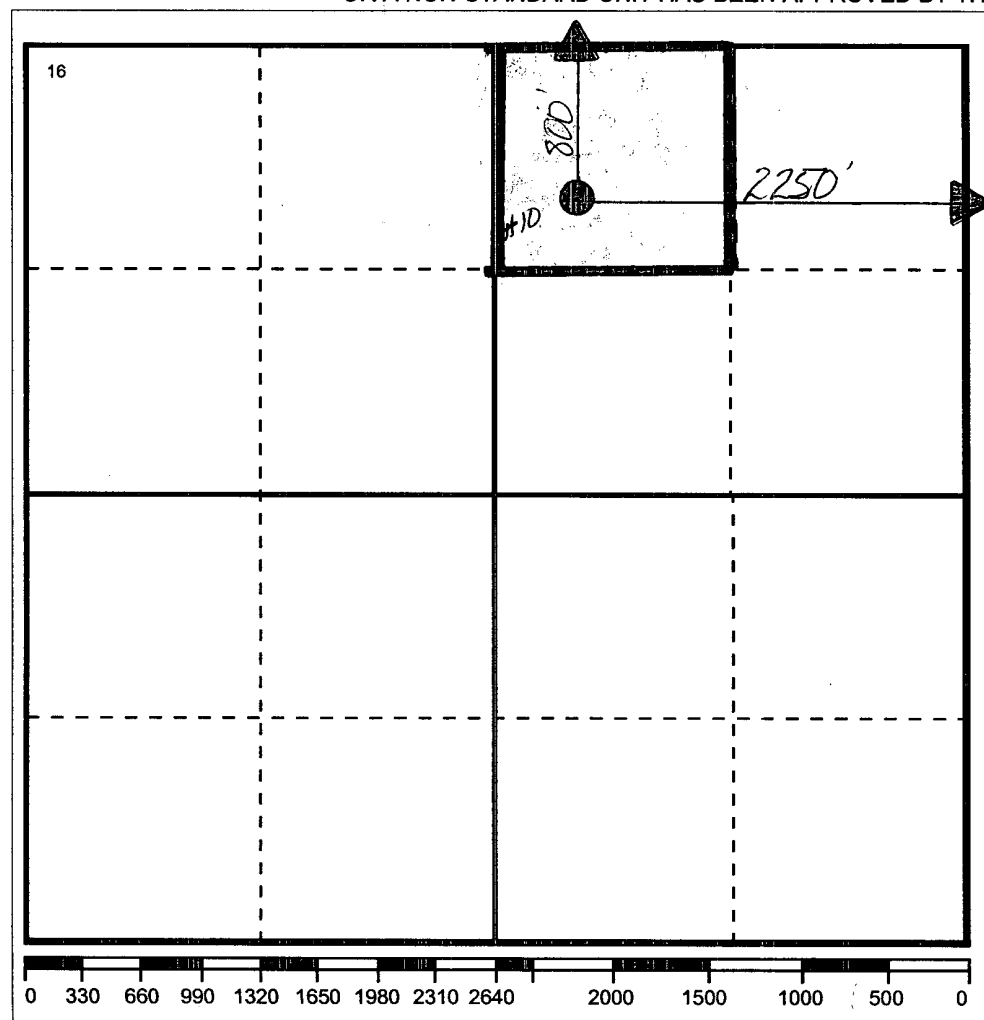
Ul or lot no B	Section 30	Township 22-S	Range 38-E	Lot.Idn	Feet From The 800'	North/South Line NORTH	Feet From The 2250'	East/West Line EAST	County LEA
-------------------	---------------	------------------	---------------	---------	-----------------------	---------------------------	------------------------	------------------------	---------------

¹¹ Bottom Hole Location If Different From Surface


Ul or lot no.	Section	Township	Range	Lot.Idn	Feet From The	North/South Line	Feet From The	East/West Line	County
---------------	---------	----------	-------	---------	---------------	------------------	---------------	----------------	--------

¹² Dedicated Acre 40	¹³ Joint or Infill No	¹⁴ Consolidation Code	¹⁵ Order No.
------------------------------------	-------------------------------------	----------------------------------	-------------------------

NO ALLOWABLE WILL BE ASSIGNED TO THIS COMPLETION UNTIL ALL INTERESTS HAVE BEEN CONSOLIDATED
OR A NON-STANDARD UNIT HAS BEEN APPROVED BY THE DIVISION



17 OPERATOR CERTIFICATION I hereby certify that the information contained herein is true and complete to the best of my knowledge and belief
Signature <i>Denise Pinkerton</i>
Printed Name Denise Pinkerton
Positio Regulatory Specialist
Date 4/25/2006
18 SURVEYOR CERTIFICATION I hereby certify that the well location shown on this plat was plotted from field notes of actual surveys made by me or under my supervision, and that the same is true and correct to the best of my knowledge and belief.
Date Surveyed
Signature & Seal of Professional Surveyor
Certificate No.

 The sender of this message has requested a read receipt. [Click here to send a receipt.](#)

Mull, Donna, EMNRD

From: Phillips, Dorothy, EMNRD
To: Mull, Donna, EMNRD
Cc:
Subject: RE: Financial Assurance Requirement
Attachments:

Sent: Thu 5/4/2006 8:49 AM

All have blankets and none appear on Jane's list.

From: Mull, Donna, EMNRD
Sent: Thursday, May 04, 2006 8:47 AM
To: Phillips, Dorothy, EMNRD
Cc: Macquesten, Gail, EMNRD; Sanchez, Daniel J., EMNRD
Subject: Financial Assurance Requirement

Dorothy,

Is the Financial Assurance Requirement for these Operators OK?

Pogo Producing Co (17891)
Marbob Energy Corp (14049)
Fasken Oil & Ranch Ltd (151416)
Marathon Oil Co (14021)
Chevron USA Inc (4323)
Rubicon Oil & Gas LLC (194266)

Please let me know. Thanks and have a nice day. Donna