

## DISTRICT I

P.O. Box 1980, Hobbs, NM 88241-1980

## State of New Mexico

Energy, Minerals and Natural Resources Department

Form C-102

Revised February 10, 1994

Submit to Appropriate District Office

State Lease - 4 Copies

Fee Lease - 3 Copies

## DISTRICT II

P.O. Drawer 80, Artesia, NM 88211-0719

## DISTRICT III

1000 Rio Brazos Rd., Artee, NM 87410

## OIL CONSERVATION DIVISION

P.O. Box 2088

Santa Fe, New Mexico 87504-2088

☐ AMENDED REPORT

## DISTRICT IV

P.O. Box 2088, Santa Fe, NM 87504-2088

## WELL LOCATION AND ACREAGE DEDICATION PLAT

API Number 30-025-35490	Pool Code 41440	Pool Name LUSK; BONE SPRING
Property Code 302075	Property Name Dorothy McKay Federal	Well Number 2
OGRIID No. 14049	Operator Name MARBOB ENERGY CORPORATION	Elevation 3636

## Surface Location

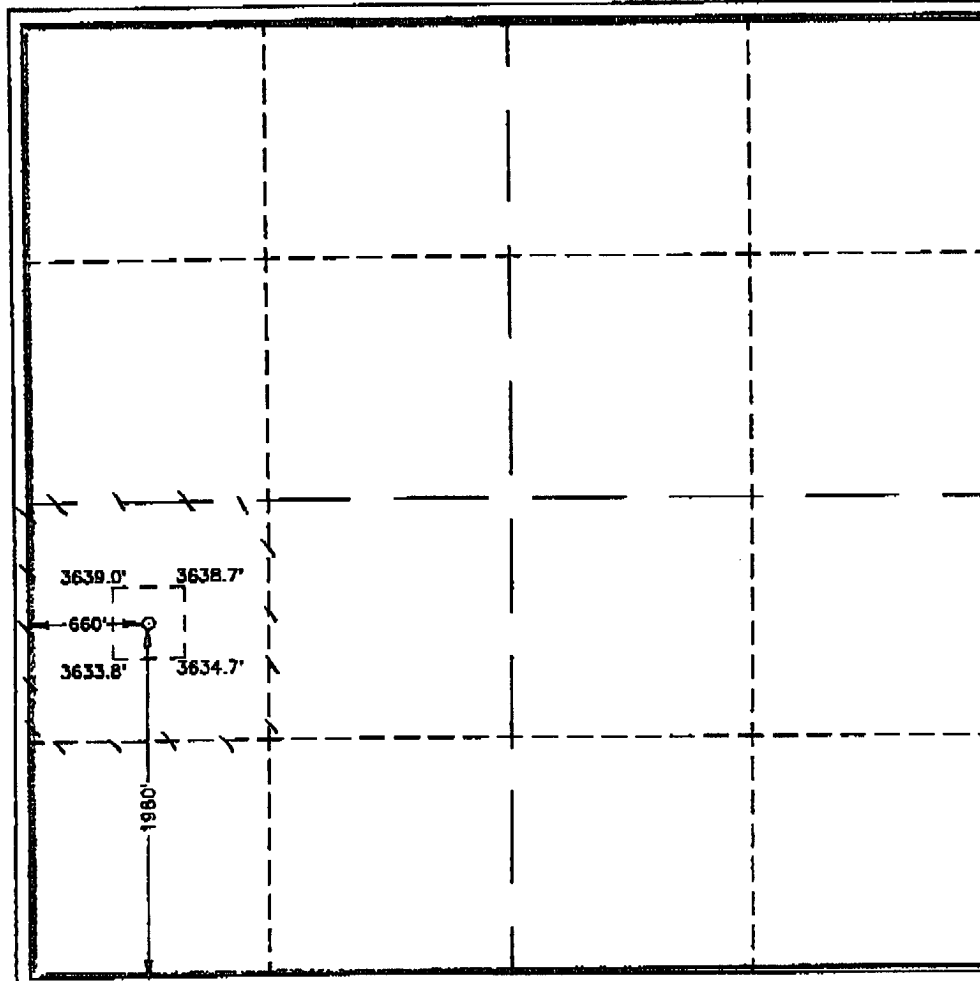
UL or lot No.	Section	Township	Range	Lot Idn	Feet from the	North/South line	Feet from the	East/West line	County
L	9	19 S	32 E		1980	SOUTH	660	WEST	LEA

## Bottom Hole Location If Different From Surface

UL or lot No.	Section	Township	Range	Lot Idn	Feet from the	North/South line	Feet from the	East/West line	County

Dedicated Acres 40	Joint or Infill	Consolidation Code	Order No.
-----------------------	-----------------	--------------------	-----------

NO ALLOWABLE WILL BE ASSIGNED TO THIS COMPLETION UNTIL ALL INTERESTS HAVE BEEN CONSOLIDATED  
OR A NON-STANDARD UNIT HAS BEEN APPROVED BY THE DIVISION



## OPERATOR CERTIFICATION

I hereby certify the the information  
contained herein is true and complete to the  
best of my knowledge and belief.

Signature

DIANA J. BRIGGS

Printed Name

PRODUCTION ANALYST

Title

MAY 3, 2006

Date

## SURVEYOR CERTIFICATION

I hereby certify that the well location shown  
on this plat was plotted from field notes of  
actual surveys made by me or under my  
supervision, and that the same is true and  
correct to the best of my belief.

OCTOBER 11, 2000

Date Surveyed

JLP

Signature & Seal of  
Professional Surveyor

*Ronald J. Edson* 10/12/00  
W.O. Num. 00-11-1245

Certificate No. RONALD J. EDSON, 3239  
GARY G. EDSON, 12041