

District I
1625 N. French Dr., Hobbs, NM 88240
Phone: (575) 393-6161 Fax: (575) 393-0720
District II
811 S. First St., Artesia, NM 88210
Phone: (505) 748-1283 Fax: (575) 748-9720
District III
1000 Rio Brazos Road, Aztec, NM 87410
Phone: (505) 334-6178 Fax: (505) 334-6170
District IV
1220 S. St. Francis Dr., Santa Fe, NM 87505
Phone: (505) 476-3460 Fax: (505) 476-3462

State of New Mexico
Energy, Minerals & Natural Resources
Department
OIL CONSERVATION DIVISION
1220 South St. Francis Dr.
Santa Fe, NM 87505

FORM C-102

Revised August 1, 2011

Submit one copy to appropriate

District Office

AMENDED REPORT

WELL LOCATION AND ACREAGE DEDICATION PLAT

¹ API Number 30-025- 44957	² Pool Code 98092	³ Pool Name WC-025 G-09 S243336I; Upper Wolfcamp
⁴ Property Code 319634	⁵ Property Name MAMBA 30 STATE COM	⁶ Well Number #704H
⁷ OGRID No. 7377	⁸ Operator Name EOG RESOURCES, INC.	⁹ Elevation 3538'

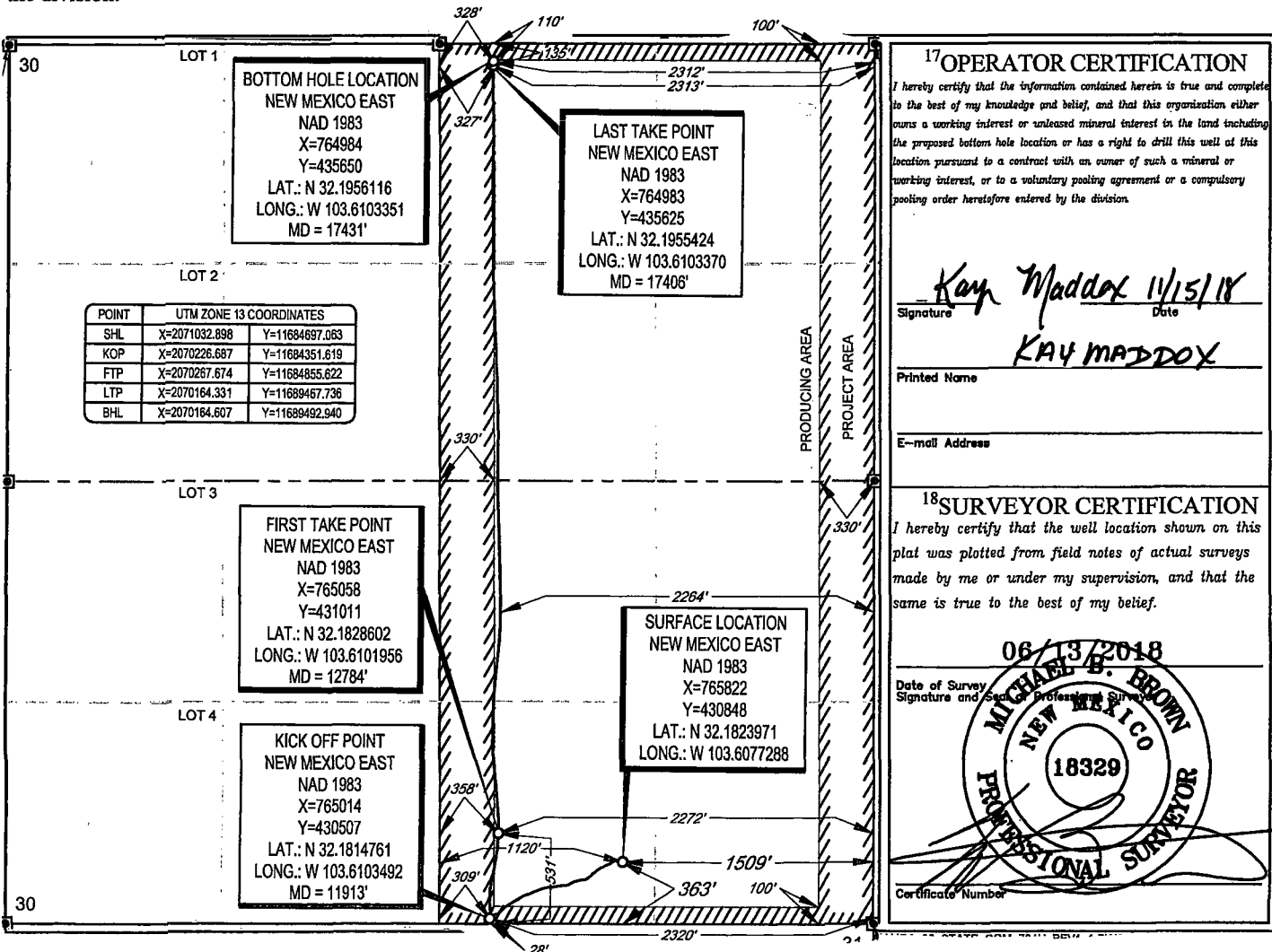
¹⁰Surface Location

UL or lot no.	Section	Township	Range	Lot Idn	Feet from the	North/South line	Feet from the	East/West line	County
0	30	24-S	33-E	-	363'	SOUTH	1509'	EAST	LEA

UL or lot no.	Section	Township	Range	Lot Idn	Feet from the	North/South line	Feet from the	East/West line	County
B	30	24-S	33-E	-	100'	NORTH	2320'	EAST	LEA

¹² Dedicated Acres 160.00	¹³ Joint or Infill	¹⁴ Consolidation Code	¹⁵ Order No.
---	-------------------------------	----------------------------------	-------------------------

No allowable will be assigned to this completion until all interests have been consolidated or a non-standard unit has been approved by the division.



SCALE: 1" = 1000'

SECTION 30, TOWNSHIP 24-S, RANGE 33-E, N.M.P.M.
LEA COUNTY, NEW MEXICO

FND. BRASS CAP,
U.S. G.L.O. SUR.
1913

N 89°36'49" E, 2608.35'

LOT 1

BOTTOM HOLE LOCATION
NEW MEXICO EAST
NAD 1983
X=764984
Y=435650
LAT.: N 32.1956116
LONG.: W 103.6103351
MD = 17431'

LAST TAKE POINT
NEW MEXICO EAST
NAD 1983
X=764983
Y=435625
LAT.: N 32.1955424
LONG.: W 103.6103370
MD = 17406'

FND. BRASS CAP,
U.S. G.L.O. SUR.
1913

FND. BRASS CAP,
U.S. G.L.O. SUR.
1913

N 00°19'37" W, 2640.23'

LOT 2

POINT	UTM ZONE 13 COORDINATES	
SHL	X=2071032.898	Y=11684697.083
KOP	X=2070226.687	Y=11684351.619
FTP	X=2070267.674	Y=11684855.622
LTP	X=2070164.331	Y=11689467.736
BHL	X=2070164.607	Y=11689492.940

LOT 3

FIRST TAKE POINT
NEW MEXICO EAST
NAD 1983
X=765058
Y=431011
LAT.: N 32.1828602
LONG.: W 103.6101956
MD = 12784'

SURFACE LOCATION
NEW MEXICO EAST
NAD 1983
X=765822
Y=430848
LAT.: N 32.1823971
LONG.: W 103.6077288

FND. BRASS CAP,
U.S. G.L.O. SUR.
1913

FND. BRASS CAP,
U.S. G.L.O. SUR.
1913

N 00°20'01" W, 2637.34'

LOT 4

KICK OFF POINT
NEW MEXICO EAST
NAD 1983
X=765014
Y=430507
LAT.: N 32.1814761
LONG.: W 103.6103492
MD = 11913'

FND. BRASS CAP,
U.S. G.L.O. SUR.
1913

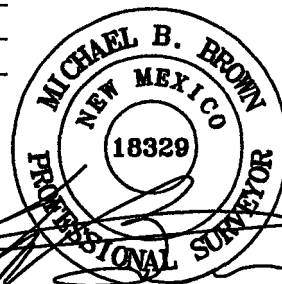
FND. BRASS CAP,
U.S. G.L.O. SUR.
1913

LEASE NAME & WELL NO.: MAMBA 30 STATE COM #704H
SECTION 30 TWP 24-S RGE 33-E SURVEY N.M.P.M.
COUNTY LEA STATE NM ELEVATION 3538'
DESCRIPTION 363 FSL & 1509' FEL



TOPOGRAPHIC
LOYALTY INNOVATION LEGACY

1400 EVERMAN PARKWAY, Ste. 146 • FT. WORTH, TEXAS 76140
TELEPHONE: (817) 744-7512 • FAX (817) 744-7554
2903 NORTH BIG SPRING • MIDLAND, TEXAS 79705
TELEPHONE: (432) 682-1653 OR (800) 767-1653 • FAX (432) 682-1743
WWW.TOPOGRAPHIC.COM



Michael Blake Brown, P.S. No. 18329
November 6, 2018

eoog resources, Inc.

MAMBA 30 STATE COM
#704H
AS-DRILLED

REVISION:

DATE: 11/06/18

FILE:AD_MAMBA_30_STATE_COM_704H

DRAWN BY: MML

SHEET: 1 OF 1

NOTES:

1. ORIGINAL DOCUMENT SIZE: 8.5" X 11"
2. ALL BEARINGS, DISTANCES, AND COORDINATE VALUES CONTAINED HEREIN ARE GRID BASED UPON THE NEW MEXICO COORDINATE SYSTEM OF 1983, EAST ZONE, U.S. SURVEY FEET.
3. THIS WELL LOCATION SHOWN HEREON HAS BEEN SURVEYED ON THE GROUND UNDER MY SUPERVISION AND PREPARED ACCORDING TO THE EVIDENCE FOUND AT THE TIME OF SURVEY, AND DATA PROVIDED BY EOG RESOURCES, INC. THIS CERTIFICATION IS MADE AND LIMITED TO THOSE PERSONS OR ENTITIES SHOWN ON THE FACE OF THIS PLAT AND IS NON-TRANSFERABLE. THIS SURVEY IS CERTIFIED FOR THIS TRANSACTION ONLY.