

DISTRICT I
1625 N. French Dr., Hobbs, NM 88240
Phone (505) 333-8161 Fax: (505) 333-0770

DISTRICT II
811 S. First St., Artesia, NM 88210
Phone (505) 748-1283 Fax: (505) 748-0720

DISTRICT III
1000 Rio Brazos Rd., Aztec, NM 87410
Phone (505) 334-8178 Fax: (505) 334-8170

DISTRICT IV
1220 S. St. Francis Dr., Santa Fe, NM 87505
Phone (505) 476-3460 Fax: (505) 476-3455

State of New Mexico
Energy, Minerals and Natural Resources Department

OIL CONSERVATION DIVISION

1220 South St. Francis Dr.
Santa Fe, New Mexico 87505

Form C-102
Revised August 1, 2011

Submit one copy to appropriate
District Office

WELL LOCATION AND ACREAGE DEDICATION PLAT

☐ AMENDED REPORT

API Number	Pool Code 97869	Pool Name SWD; Devonian
Property Code	Property Name MR BELDING STATE SWD	Well Number 1
OGRID No. 371643	Operator Name SOLARIS WATER MIDSTREAM	Elevation 3412'

Surface Location

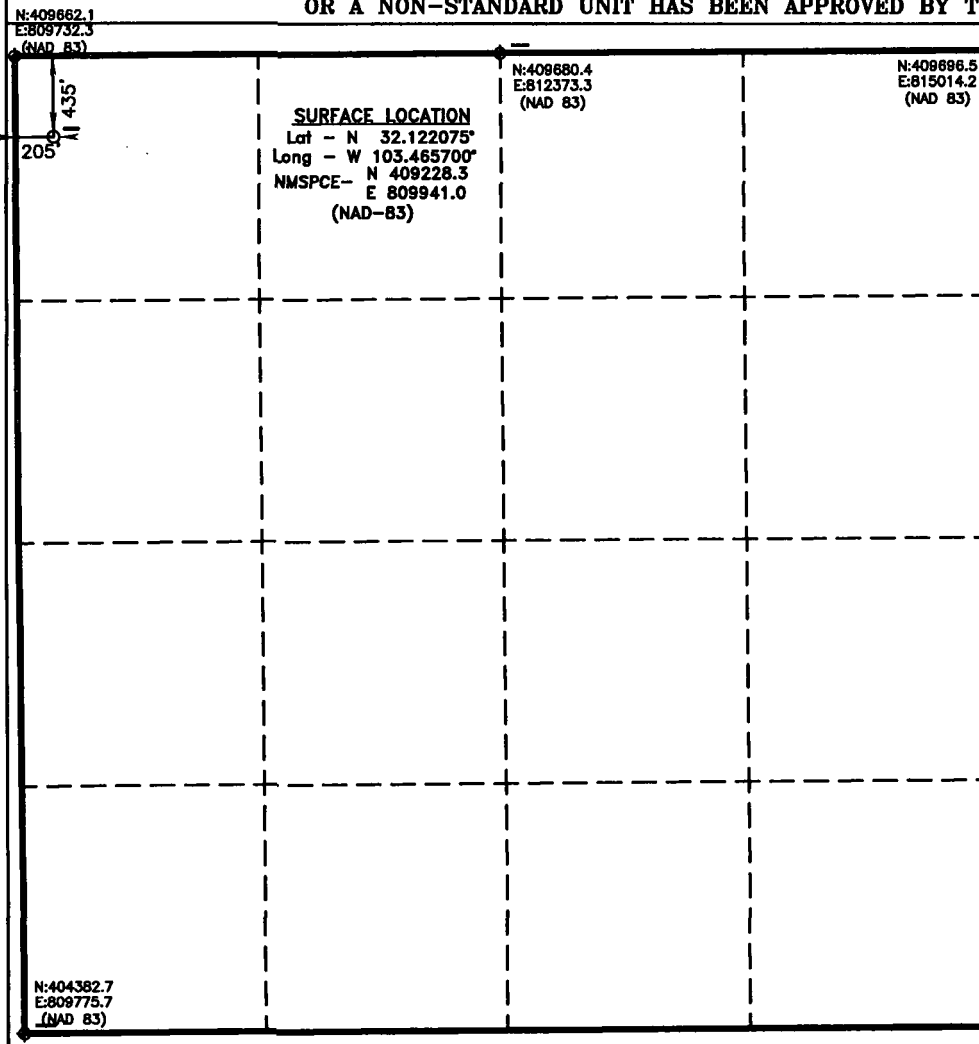
UL or lot No. D	Section 22	Township 25 S	Range 34 E	Lot Idn	Feet from the 435	North/South line NORTH	Feet from the 205	East/West line WEST	County LEA
--------------------	---------------	------------------	---------------	---------	----------------------	---------------------------	----------------------	------------------------	---------------

Bottom Hole Location If Different From Surface

UL or lot No.	Section	Township	Range	Lot Idn	Feet from the	North/South line	Feet from the	East/West line	County
---------------	---------	----------	-------	---------	---------------	------------------	---------------	----------------	--------

Dedicated Acres 5.50	Joint or Infill	Consolidation Code	Order No.
-------------------------	-----------------	--------------------	-----------

NO ALLOWABLE WILL BE ASSIGNED TO THIS COMPLETION UNTIL ALL INTERESTS HAVE BEEN CONSOLIDATED
OR A NON-STANDARD UNIT HAS BEEN APPROVED BY THE DIVISION



OPERATOR CERTIFICATION

I hereby certify that the information contained herein is true and complete to the best of my knowledge and belief, and that this organization either owns a working interest or unleased mineral interest in the land including the proposed bottom hole location or has a right to drill this well at this location pursuant to a contract with an owner of such a mineral or working interest, or to a voluntary pooling agreement or a compulsory pooling order heretofore entered by the division.

Bonnie Atwater 11/13/18
Signature Date

Bonnie Atwater

Printed Name

bonnie.atwater@solarismidstream.com
Email Address

SURVEYOR CERTIFICATION

I hereby certify that the well location shown on this plat was plotted from field notes of actual surveys made by me or under my supervision, and that the same is true and correct to the best of my belief.

SEPTEMBER 14, 2018

Date Surveyed
Signature of Professional Surveyor

Certificate No. 7977

0' 500' 1000' 1500' 2000'
SCALE: 1" = 1000'
WO Num.: 34069