

Submit 1 Copy To Appropriate District Office
District I - (575) 393-6161
1625 N. French Dr., Hobbs, NM 88240
District II - (575) 748-1283
811 S. First St., Artesia, NM 88210
District III - (505) 334-6178
1000 Rio Brazos Rd., Aztec, NM 87410
District IV - (505) 476-3460
1220 S. St. Francis Dr., Santa Fe, NM 87505

State of New Mexico
Energy, Minerals and Natural Resources

Form C-103
Revised July 18, 2013

OIL CONSERVATION DIVISION
1220 South St. Francis Dr.
Santa Fe, NM 87505

| |
|---|
| WELL API NO. 30-025-01033 |
| 5. Indicate Type of Lease STATE <input checked="" type="checkbox"/> FEE <input type="checkbox"/> |
| 6. State Oil & Gas Lease No. |
| 7. Lease Name or Unit Agreement Name State BD |
| 8. Well Number 003 |
| 9. OGRID Number 372000 |
| 10. Pool name or Wildcat SWD Devonian |

SUNDRY NOTICES AND REPORTS ON WELLS RECEIVED
(DO NOT USE THIS FORM FOR PROPOSALS TO DRILL OR TO DEEPEN OR PLUG BACK TO A DIFFERENT RESERVOIR. USE "APPLICATION FOR PERMIT" (FORM C-101) FOR SUCH PROPOSALS.)

| |
|---|
| 1. Type of Well: Oil Well <input type="checkbox"/> Gas Well <input checked="" type="checkbox"/> Other |
| 2. Name of Operator Pogo Oil and Gas Operating, Inc |
| 3. Address of Operator 1515 Calle Sur, Suite 174 Hobbs, NM 88240 |
| 4. Well Location Unit Letter I : 1980 feet from the SOUTH line and 660 feet from the EAST line Section 2 Township 12S Range 33E NMPM Lea County |
| 11. Elevation (Show whether DR, RKB, RT, GR, etc.) |

12. Check Appropriate Box to Indicate Nature of Notice, Report or Other Data

NOTICE OF INTENTION TO:

PERFORM REMEDIAL WORK ☐ PLUG AND ABANDON ☒
TEMPORARILY ABANDON ☐ CHANGE PLANS ☐
PULL OR ALTER CASING ☐ MULTIPLE COMPL ☐
DOWNHOLE COMMINGLE ☐
CLOSED-LOOP SYSTEM ☐
OTHER: ☐

SUBSEQUENT REPORT OF:

REMEDIAL WORK ☐ ALTERING CASING ☐
COMMENCE DRILLING OPNS. ☐ P AND A ☐
CASING/CEMENT JOB ☐
OTHER: ☐

13. Describe proposed or completed operations. (Clearly state all pertinent details, and give pertinent dates, including estimated date of starting any proposed work). SEE RULE 19.15.7.14 NMAC. For Multiple Completions: Attach wellbore diagram of proposed completion or recompletion.

Made 2 attempts for 9 days to fish corroded/parted tbg. All attempts have failed. Recovered both pieces of tbg and csg during fishing.

Notify NMOCD 24 hours before operations begin

Set steel pit. MIRU PU. NU BOP. RIH w/ wireline and set CIBP @ 1,750'.
RIH w/ tbg and tag CIBP. PU and circulate well w/ gelled brine
Circulate hole w/ Class "C" cmt to surface.
POOH, RD plugging unit.

See Attached
Conditions of Approval

Clear off wellsite, cut off wellhead and anchors, set DHM, remediate location per OCD requirements.

Spud Date:

Rig Release Date:

I hereby certify that the information above is true and complete to the best of my knowledge and belief.

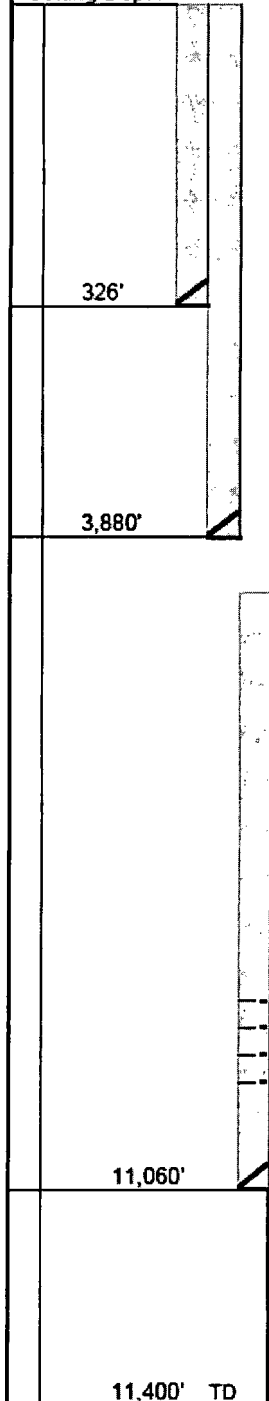
SIGNATURE [Signature] TITLE Production Manager DATE 11/22/18
Type or print name M.Y. (Merch) Merchant E-mail address: mymerch@penrocoil.com PHONE: (575) 492-1236
For State Use Only
APPROVED BY: [Signature] TITLE P.E.S. DATE 11/27/2018
Conditions of Approval (if any):

WBD Current

Well: State BD #003
API: 30-025-01033

Legal: I-02-T12S-R33E
Surface Location: 1980' FSL 660' FEL

Setting Depth



13-3/8", 48# csg
350 sxs cmt

9-5/8", 36# csg
3700 sxs cmt

7", 23# csg
2057 sxs cmt
temp survey found TOC @5,500'

Sqz'ed perms @ 8,967-10,805'

Open Hole
8-3/4"

Casing Details

| | Size | Wt | Grade | Cmt | From | To |
|--------------|---------|-----|-------|---------|---------|---------|
| Surface | 13-3/8" | 48# | n/a | Surface | 0' | 326' |
| Intermediate | 9-5/8" | 36# | n/a | Surface | 0' | 3,880' |
| Production | 7" | 23# | n/a | 2057sxs | 0' | 11,060' |
| Open Hole | 6" | n/a | n/a | | 11,060' | 11,400' |

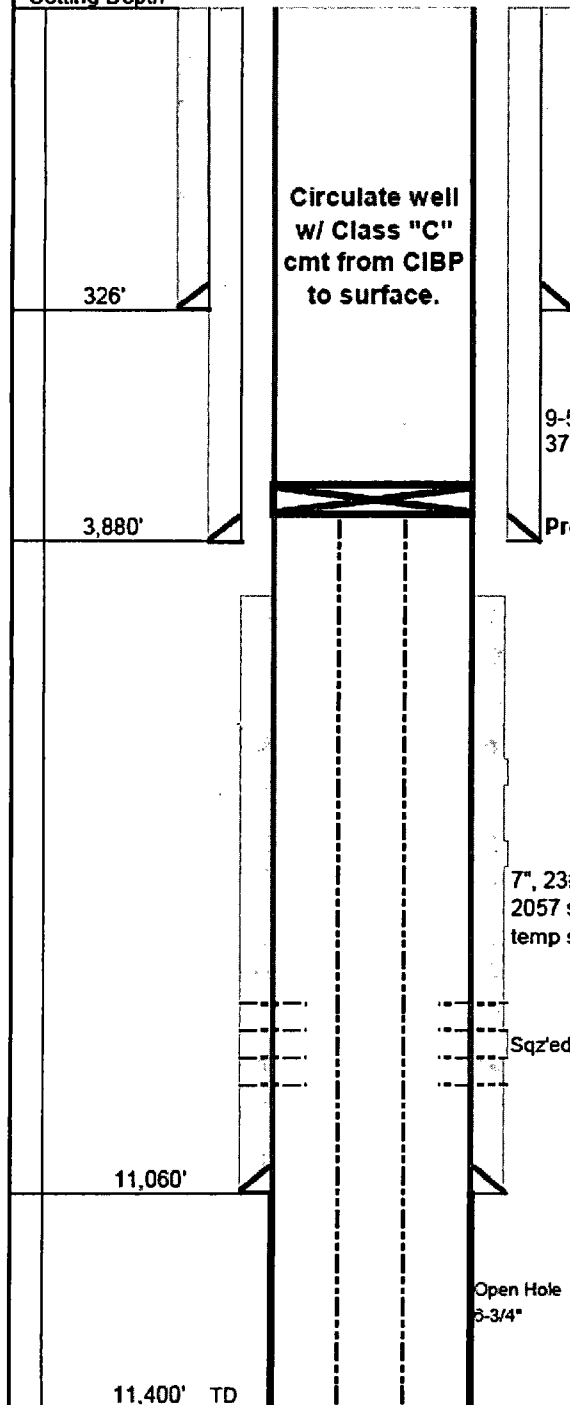
3-1/2" tbg parted in hole. Attempted to fish for a week and could only get down to 1,824'

WBD After Plugging

Well: State BD #003
API: 30-025-01033

Legal: I-02-T12S-R33E
Surface Location: 1980' FSL 660' FEL

Setting Depth



Casing Details

| | Size | Wt | Grade | Cmt | From | To |
|--------------|---------|-----|-------|---------|---------|---------|
| Surface | 13-3/8" | 48# | n/a | Surface | 0' | 326' |
| Intermediate | 9-5/8" | 36# | n/a | Surface | 0' | 3,880' |
| Production | 7" | 23# | n/a | 2057sxs | 0' | 11,060' |
| Open Hole | 6" | n/a | n/a | | 11,060' | 11,400' |

3-1/2" tbg parted in hole. Attempted to fish for a 9 days on 2 seprate occations and could only get down to 1,824'. Recovered pieces of both tbq and csg during operations

Conditions of Approval

Pogo Oil and Gas Operating, Inc
State BD #3
30-025-01033

Load hole and pressure test.

If casing will not test. Locate hole(s) in 7" casing and contact NMOCD.

If 7" casing test, perforate 5' above top of fish.

Set cement retainer 200' above perforation.

Squeeze with 50 sacks Class C cement.

Displace to 100' below cement retainer.

Sting out of retainer and circulate clean.

WOC 4 hours.

Sting into retainer and pressure test.

If test fails, repeat squeeze until test holds.

Spot 25 sacks cement on retainer.

Circulate mud laden fluid up to 370' in 7" casing.

Perforate 7' casing at 376'.

Circulate cement to surface inside/outside 7" casing.

Cut off wellhead 3' below ground level.

Verify cement to surface all strings.

Install upright P&A marker.

GENERAL CONDITIONS OF APPROVAL:

- 1) Insure all bradenheads have been exposed, identified, and valves are operational prior to rigging up on well.
- 2) Contact the appropriate NMOCD District Office no later than 24 hours prior to moving in and rigging up.
- 3) A copy of the approved C103 intent to P&A should be distributed to the onsite company and plugging representatives. Approved procedures are good for a period of one year from approved date, unless otherwise specified on the C103 intent. Approvals past this date will require the submission and approval of a new C103 intent.
- 4) A company representative is required to be present to witness all operations including setting CIBP's, circulation of mud laden fluids, perforating, squeezing or spotting cement plugs, tags, or any other operations approved on the C103 intent to P&A. Company representative should contact the NMOCD and report all operations.
- 5) Any changes that may be required during plugging operations should be approved by the NMOCD before proceeding.
- 6) A closed loop system is to be used for all plugging operations. Contents of the steel pits to be hauled to a NMOCD permitted disposal facility.
- 7) Mud laden fluids must be placed between all cement plugs mixed at 25 sacks of salt gel per 100 barrels of brine.
- 8) All cement plugs will be 100' or 25 sacks cement, whichever is greater. Class 'C' cement will be used above 7500' and Class 'H' below 7500'.