

HOBBS OGD

NOV 29 2018

Form 3160-4  
(August 2007)UNITED STATES  
DEPARTMENT OF THE INTERIOR  
BUREAU OF LAND MANAGEMENT  
**RECEIVED Hobbs**FORM APPROVED  
OMB No. 1004-0137  
Expires: July 31, 2010

## WELL COMPLETION OR RECOMPLETION REPORT AND LOG

5. Lease Serial No.  
NMNM1108401a. Type of Well ☒ Oil Well ☐ Gas Well ☐ Dry ☐ Other  
b. Type of Completion ☒ New Well ☐ Work Over ☐ Deepen ☐ Plug Back ☐ Diff. Resvr.  
Other \_\_\_\_\_

6. If Indian, Allottee or Tribe Name

7. Unit or CA Agreement Name and No.

2. Name of Operator  
EOG RESOURCES INCORPORATED E-Mail: KAY\_MADDOX@EOGRESOURCES.COM

Contact: KAY MADDOX

8. Lease Name and Well No.  
PHILLY 31 FED COM 703H3. Address  
MIDLAND, TX 797023a. Phone No. (include area code)  
Ph: 432-686-36589. API Well No.  
30-025-44768-00-S1

4. Location of Well (Report location clearly and in accordance with Federal requirements)\*

Sec 31 T26S R34E Mer NMP

At surface Lot 3 290FSL 2030FWL 32.001063 N Lat, 103.510991 W Lon

Sec 31 T26S R34E Mer NMP

At top prod interval reported below SENW 439FSL 1650FWL 32.001471 N Lat, 103.512217 W Lon

Sec 30 T26S R34E Mer NMP

At total depth Lot 1 106FNL 1674FWL 32.021368 N Lat, 103.512140 W Lon

10. Field and Pool, or Exploratory  
SANDERS TANK-UPR WOLFCAMP11. Sec., T., R., M., or Block and Survey  
or Area Sec 31 T26S R34E Mer NMP12. County or Parish  
LEA13. State  
NM14. Date Spudded  
07/25/201815. Date T.D. Reached  
08/16/201816. Date Completed  
☐ D & A ☒ Ready to Prod.  
09/18/201817. Elevations (DF, KB, RT, GL)\*  
3366 GL18. Total Depth: MD  
TVD 20190  
1272319. Plug Back T.D.: MD  
TVD 20169  
1272320. Depth Bridge Plug Set: MD  
TVD21. Type Electric & Other Mechanical Logs Run (Submit copy of each)  
3366 GL22. Was well cored? ☒ No ☐ Yes (Submit analysis)  
Was DST run? ☒ No ☐ Yes (Submit analysis)  
Directional Survey? ☐ No ☒ Yes (Submit analysis)

## 23. Casing and Liner Record (Report all strings set in well)

Hole Size	Size/Grade	Wt. (#/ft.)	Top (MD)	Bottom (MD)	Stage Cementer Depth	No. of Sk. & Type of Cement	Slurry Vol. (BBL)	Cement Top*	Amount Pulled
17.500	13.375 J55	54.5		965		986		0	
12.250	9.625 J55	40.0		5207		1575		0	
8.750	7.625 HCP110	29.7		12037		425		1658	
6.750	5.500 HCP110	20.0		20180		765		8450	

## 24. Tubing Record

Size	Depth Set (MD)	Packer Depth (MD)	Size	Depth Set (MD)	Packer Depth (MD)	Size	Depth Set (MD)	Packer Depth (MD)

## 25. Producing Intervals

## 26. Perforation Record

Formation	Top	Bottom	Perforated Interval	Size	No. Holes	Perf. Status
A) WOLFCAMP	12943	20169	12943 TO 20169	3.000	1542	OPEN
B)						
C)						
D)						

## 27. Acid, Fracture, Treatment, Cement Squeeze, Etc.

Depth Interval	Amount and Type of Material
12882 TO 20172	17,693,170 LBS PROPPANT, 288,265 BBLs LOAD FLUID

## 28. Production - Interval A

Date First Produced	Test Date	Hours Tested	Test Production	Oil BBL	Gas MCF	Water BBL	Oil Gravity Corr. API	Gas Gravity	Production Method
09/18/2018	09/20/2018	24	→	2296.0	4196.0	9941.0	40.0		FLows FROM WELL
Choke Size	Tbg. Press. Flwg. SI	Csg. Press.	24 Hr. Rate	Oil BBL	Gas MCF	Water BBL	Gas:Oil Ratio	Well Status	
64	SI	2268.0	→	2296	4196	9941	1847		

## 28a. Production - Interval B

Date First Produced	Test Date	Hours Tested	Test Production	Oil BBL	Gas MCF	Water BBL	Oil Gravity Corr. API	Gas Gravity	Production Method
			→						NOV 11 2018
Choke Size	Tbg. Press. Flwg. SI	Csg. Press.	24 Hr. Rate	Oil BBL	Gas MCF	Water BBL	Gas:Oil Ratio	Well Status	
	SI		→						

ACCEPTED FOR RECORD

BUREAU OF LAND MANAGEMENT  
CARLSBAD FIELD OFFICE

(See Instructions and spaces for additional data on reverse side)

ELECTRONIC SUBMISSION #438787 VERIFIED BY THE BLM WELL INFORMATION SYSTEM

\*\* BLM REVISED \*\* BLM REVISED \*\* BLM REVISED \*\* BLM REVISED \*\* BLM REVISED \*\*

Reclamation Due: 3/18/2019

## 28b. Production - Interval C

Date First Produced	Test Date	Hours Tested	Test Production	Oil BBL	Gas MCF	Water BBL	Oil Gravity Corr. API	Gas Gravity	Production Method
			→						
Choke Size	Tbg. Press. Flwg. SI	Csg. Press.	24 Hr. Rate	Oil BBL	Gas MCF	Water BBL	Gas:Oil Ratio	Well Status	
			→						

## 28c. Production - Interval D

Date First Produced	Test Date	Hours Tested	Test Production	Oil BBL	Gas MCF	Water BBL	Oil Gravity Corr. API	Gas Gravity	Production Method
			→						
Choke Size	Tbg. Press. Flwg. SI	Csg. Press.	24 Hr. Rate	Oil BBL	Gas MCF	Water BBL	Gas:Oil Ratio	Well Status	
			→						

29. Disposition of Gas(Sold, used for fuel, vented, etc.)  
SOLD

## 30. Summary of Porous Zones (Include Aquifers):

Show all important zones of porosity and contents thereof: Cored intervals and all drill-stem tests, including depth interval tested, cushion used, time tool open, flowing and shut-in pressures and recoveries.

## 31. Formation (Log) Markers

Formation	Top	Bottom	Descriptions, Contents, etc.	Name	Top Meas. Depth
RUSTLER	769		BARREN	RUSTLER	769
TOP OF SALT	1209		BARREN	TOP OF SALT	1209
BASE OF SALT	5243		BARREN	BASE OF SALT	5243
BRUSHY CANYON	8044		OIL & GAS	BRUSHY CANYON	8044
BONE SPRING 1ST	10506		OIL & GAS	BONE SPRING 1ST	10506
BONE SPRING 2ND	11047		OIL & GAS	BONE SPRING 2ND	11047
BONE SPRING 3RD	12128		OIL & GAS	BONE SPRING 3RD	12128
WOLFCAMP	12519		OIL & GAS	WOLFCAMP	12519

32. Additional remarks (include plugging procedure):  
PLEASE REFERENCE ATTACHMENTS

## 33. Circle enclosed attachments:

- |   |                    |               |                       |
|---|--------------------|---------------|-----------------------|
| 1. Electrical/Mechanical Logs (1 full set req'd.)     | 2. Geologic Report | 3. DST Report | 4. Directional Survey |
| 5. Sundry Notice for plugging and cement verification | 6. Core Analysis   | 7. Other:     |                       |

## 34. I hereby certify that the foregoing and attached information is complete and correct as determined from all available records (see attached instructions):

**Electronic Submission #438787 Verified by the BLM Well Information System.  
For EOG RESOURCES INCORPORATED, sent to the Hobbs  
Committed to AFMSS for processing by DUNCAN WHITLOCK on 10/10/2018 (19DW0026SE)**

Name (please print) KAY MADDOXTitle REGULATORY SPECIALIST

Signature \_\_\_\_\_ (Electronic Submission)

Date 10/09/2018

Title 18 U.S.C. Section 1001 and Title 43 U.S.C. Section 1212, make it a crime for any person knowingly and willfully to make to any department or agency of the United States any false, fictitious or fraudulent statements or representations as to any matter within its jurisdiction.

**\*\* REVISED \*\* REVISED \*\* REVISED \*\* REVISED \*\* REVISED \*\* REVISED \*\* REVISED \*\***

District I  
1625 N. French Dr., Hobbs, NM 88240  
Phone: (575) 393-6161 Fax: (575) 393-0720  
District II  
811 S. First St., Artesia, NM 88210  
Phone: (575) 748-1283 Fax: (575) 748-9720  
District III  
1000 Rio Brazos Road, Aztec, NM 87410  
Phone: (505) 334-6178 Fax: (505) 334-6170  
District IV  
1220 S. St. Francis Dr., Santa Fe, NM 87505  
Phone: (505) 476-3460 Fax: (505) 476-3462

State of New Mexico  
Energy, Minerals & Natural Resources  
Department  
OIL CONSERVATION DIVISION  
1220 South St. Francis Dr.  
Santa Fe, NM 87505

FORM C-102  
Revised August 1, 2011  
Submit one copy to appropriate  
District Office  
AMENDED REPORT

WELL LOCATION AND ACREAGE DEDICATION PLAT

<sup>1</sup> API Number 30-025-44768		<sup>2</sup> Pool Code 98097		<sup>3</sup> Pool Name Sanders Tank; Upper Wolfcamp	
<sup>4</sup> Property Code 321381		<sup>5</sup> Property Name PHILLY 31 FED COM			<sup>6</sup> Well Number #703H
<sup>7</sup> OGRID No. 7377		<sup>8</sup> Operator Name EOG RESOURCES, INC.			<sup>9</sup> Elevation 3365'

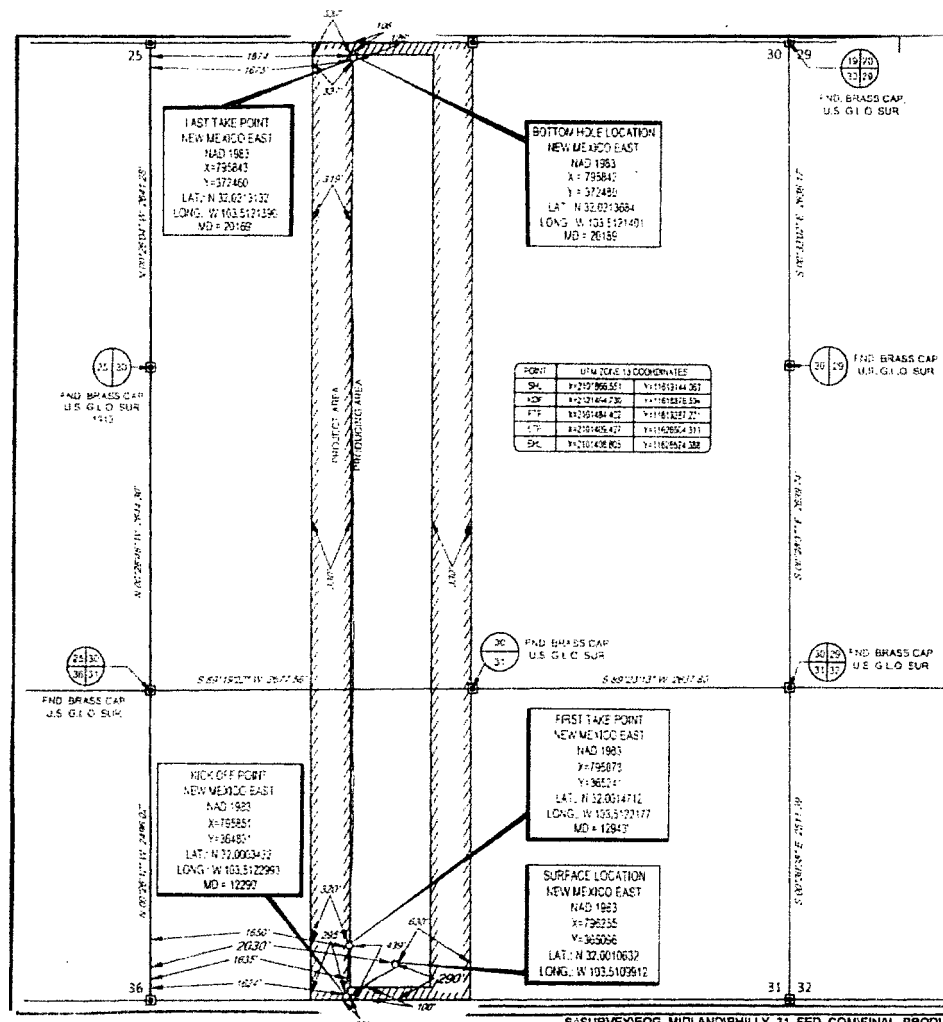
<sup>10</sup>Surface Location

UL or lot no.	Section	Township	Range	Lot Idn	Feet from the	North/South line	Feet from the	East/West line	County
3	31	26-S	34-E	-	290'	SOUTH	2030'	WEST	LEA

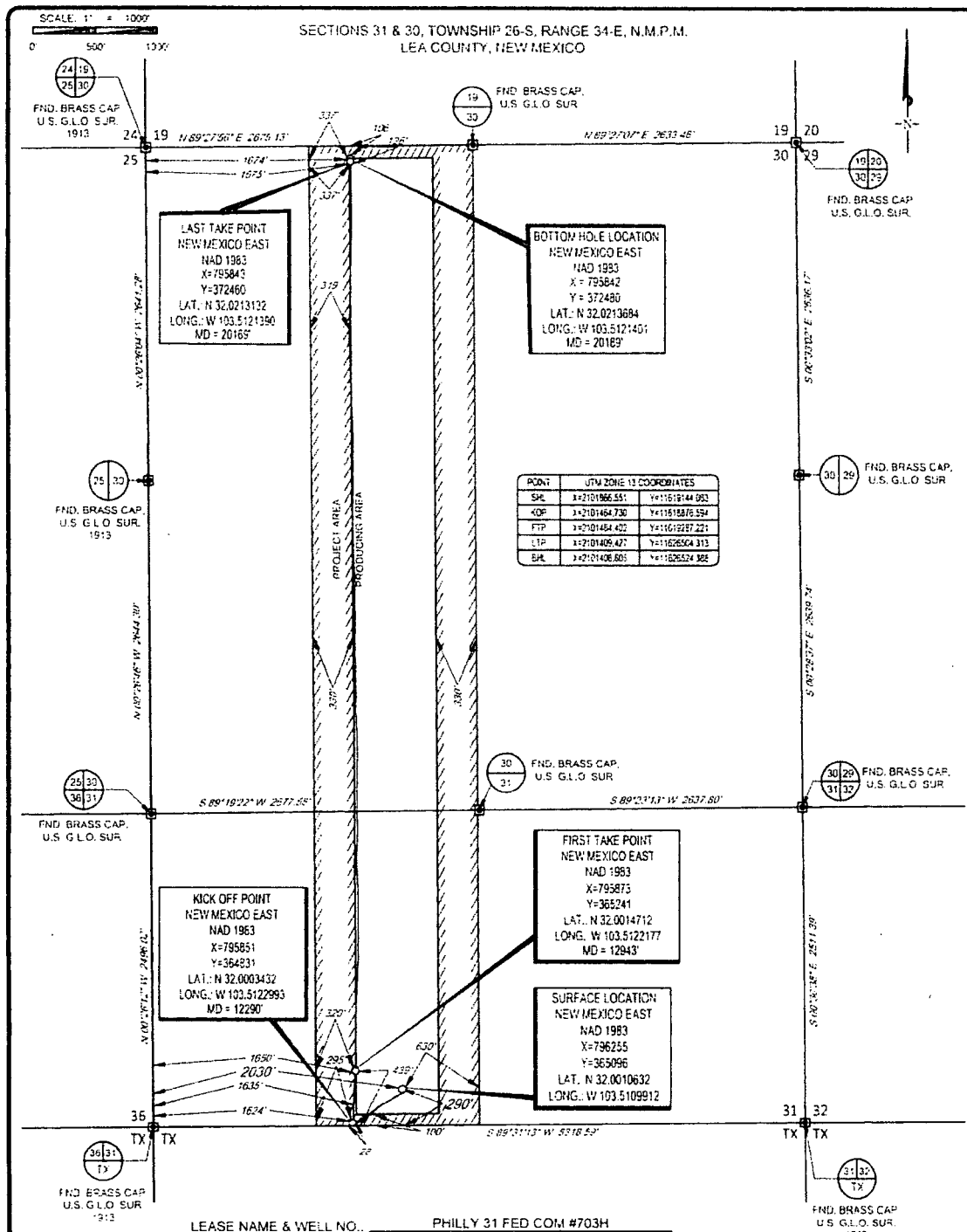
UL or lot no.	Section	Township	Range	Lot Idn	Feet from the	North/South line	Feet from the	East/West line	County
1	30	26-S	34-E	-	106'	NORTH	1674'	WEST	LEA

<sup>12</sup> Dedicated Acres 238.30	<sup>13</sup> Joint or Infill	<sup>14</sup> Consolidation Code	<sup>15</sup> Order No.
---	-------------------------------	----------------------------------	-------------------------

No allowable will be assigned to this completion until all interests have been consolidated or a non-standard unit has been approved by the division.



<sup>17</sup> OPERATOR CERTIFICATION	
I hereby certify that the information contained herein is true and complete to the best of my knowledge and belief, and that this organization either owns a working interest or leased mineral interest in the land including the proposed bottom hole location or has a right to drill this well at this location pursuant to a contract with an owner of such a mineral or working interest, or to a voluntary pooling agreement or a compulsory pooling order heretofore entered by the division.	
Signature <i>Kay Maddox</i>	Date 10/8/18
Printed Name KAY MADDOX	
E-mail Address	
<sup>18</sup> SURVEYOR CERTIFICATION	
I hereby certify that the well location shown on this plat was plotted from field notes of actual surveys made by me or under my supervision, and that the same is true to the best of my belief.	
Date of Survey 05/09/2018	
Signature and Seal of Professional Surveyor <i>Michael Brown</i>	
Certificate Number 18329	



LEASE NAME & WELL NO. PHILLY 31 FED COM #703H

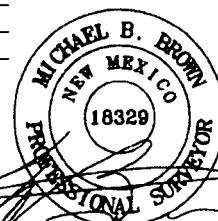
SECTION 31 TWP 26-S RGE 34-E SURVEY N.M.P.M.

COUNTY LEA STATE NM ELEVATION 3366'

DESCRIPTION 290' FSL & 2030' FWL



1405 EVERMAN PARKWAY, SUITE 140 - FT. WORTH, TEXAS 76140  
TELEPHONE: (817) 744-7517 • FAX: (817) 744-7554  
2902 NORTH BIG SPRING • MIDLAND, TEXAS 79706  
TELEPHONE: (409) 887-1653 OR (800) 787-1653 • FAX: (409) 887-1742  
WWW.TOPOGRAPHIC.COM



Michael Blake Brown, P.S. No. 18329  
SEPTEMBER 14, 2018



PHILLY 31 FED COM  
#703H  
AS-COMPLETED

DATE: 09/14/18

FILE: AD\_PHILLY\_31\_FED\_COM\_703H

DRAWN BY: JDR

SHEET: 1 OF 1

REVISION.	

NOTES

1. ORIGINAL DOCUMENT SIZE: 8.5" X 11"
2. ALL BEARINGS, DISTANCES, AND COORDINATE VALUES CONTAINED HEREIN ARE GRID BASED UPON THE NEW MEXICO COORDINATE SYSTEM OF 1983, EAST ZONE, U.S. SURVEY FEET.
3. THIS WELL LOCATION SHOWN HEREON HAS BEEN SURVEYED ON THE GROUND UNDER MY SUPERVISION AND PREPARED ACCORDING TO THE EVIDENCE FOUND AT THE TIME OF SURVEY, AND DATA PROVIDED BY EOG RESOURCES, INC. THIS CERTIFICATION IS MADE AND LIMITED TO THOSE PERSONS OR ENTITIES SHOWN ON THE FACE OF THIS PLAT AND IS NON-TRANSFERABLE. THIS SURVEY IS CERTIFIED FOR THIS TRANSACTION ONLY.