

District I  
1625 N. French Dr., Hobbs, NM 88240  
Phone: (575) 393-6161 Fax: (575) 393-0720  
District II  
811 S. First St., Artesia, NM 88210  
Phone: (575) 748-1283 Fax: (575) 748-9720  
District III  
1000 Rio Brazos Road, Aztec, NM 87410  
Phone: (505) 334-6178 Fax: (505) 334-6170  
District IV  
1220 S. St. Francis Dr., Santa Fe, NM 87505  
Phone: (505) 476-3460 Fax: (505) 476-3462

State of New Mexico  
Energy, Minerals & Natural Resources  
Department  
OIL CONSERVATION DIVISION  
1220 South St. Francis Dr.  
Santa Fe, NM 87505

FORM C-102

Revised August 1, 2011

Submit one copy to appropriate

District Office

☐ AMENDED REPORT

WELL LOCATION AND ACREAGE DEDICATION PLAT

<sup>1</sup> API Number 30-025-45981	<sup>2</sup> Pool Code 98092	<sup>3</sup> Pool Name WC-025 G-09 S2433361; Upper Wolfcamp
<sup>4</sup> Property Code 79126	<sup>5</sup> Property Name DILLON 31 FED COM	<sup>6</sup> Well Number #706H
<sup>7</sup> GRID No. 7377	<sup>8</sup> Operator Name EOG RESOURCES, INC.	<sup>9</sup> Elevation 3432'

<sup>10</sup>Surface Location

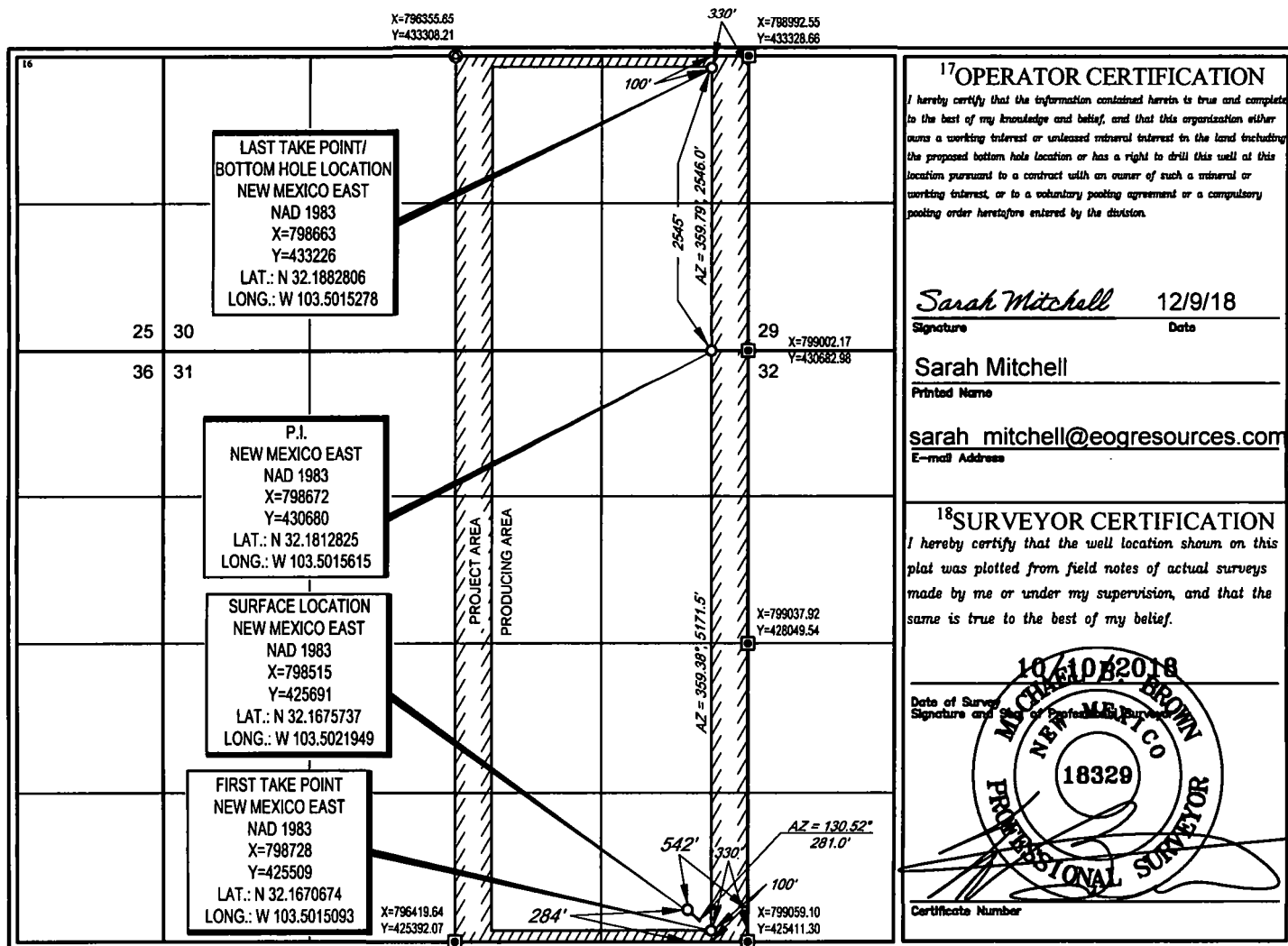
UL or lot no. P	Section 31	Township 24-S	Range 34-E	Lot Idn 7	Feet from the 284'	North/South line SOUTH	Feet from the 524'	East/West line EAST	County LEA
--------------------	---------------	------------------	---------------	--------------	-----------------------	---------------------------	-----------------------	------------------------	---------------

<sup>11</sup>Bottom Hole Location If Different From Surface

UL or lot no. I	Section 30	Township 24-S	Range 34-E	Lot Idn -	Feet from the 2545'	North/South line SOUTH	Feet from the 330'	East/West line EAST	County LEA
--------------------	---------------	------------------	---------------	--------------	------------------------	---------------------------	-----------------------	------------------------	---------------

<sup>12</sup> Dedicated Acres 480.00	<sup>13</sup> Joint or Infill	<sup>14</sup> Consolidation Code	<sup>15</sup> Order No.
---	-------------------------------	----------------------------------	-------------------------

No allowable will be assigned to this completion until all interests have been consolidated or a non-standard unit has been approved by the division.



<sup>17</sup>OPERATOR CERTIFICATION

I hereby certify that the information contained herein is true and complete to the best of my knowledge and belief, and that this organization either owns a working interest or unleased mineral interest in the land including the proposed bottom hole location or has a right to drill this well at this location pursuant to a contract with an owner of such a mineral or working interest, or to a voluntary pooling agreement or a compulsory pooling order heretofore entered by the division.

Sarah Mitchell 12/9/18  
Signature Date

Sarah Mitchell  
Printed Name

sarah\_mitchell@egresources.com  
E-mail Address

<sup>18</sup>SURVEYOR CERTIFICATION

I hereby certify that the well location shown on this plat was plotted from field notes of actual surveys made by me or under my supervision, and that the same is true to the best of my belief.

Date of Survey  
Signature and Seal of Professional Surveyor

10/10/2018  
MICHAEL BROWN  
NEW MEXICO  
18329  
PROFESSIONAL SURVEYOR  
Certificate Number