

UNITED STATES
DEPARTMENT OF THE INTERIOR
BUREAU OF LAND MANAGEMENTFORM APPROVED
OMB No. 1004-0137
Expires: July 31, 2010

WELL COMPLETION OR RECOMPLETION REPORT AND LOG

5. Lease Serial No.
NMNM1149921a. Type of Well ☒ Oil Well ☐ Gas Well ☐ Dry ☐ Otherb. Type of Completion ☒ New Well ☐ Work Over ☐ Deepen ☐ Plug Back ☐ Diff. Resv.
Other _____

6. If Indian, Allottee or Tribe Name

7. Unit or CA Agreement Name and No.

2. Name of Operator
DEVON ENERGY PRODUCTION COMPANYContact: REBECCA DEAL
rebecca.deal@dvn.com8. Lease Name and Well No.
FIGHTING OKRA 18-19 FED 7H3. Address 333 WEST SHERIDAN AVENUE
OKLAHOMA CITY, OK 731023a. Phone No. (include area code)
Ph: 405-228-84299. API Well No.
30-025-44093-00-X1

4. Location of Well (Report location clearly and in accordance with Federal requirements)*

At surface Sec 18 T26S R34E Mer NMP
NENW 330FNL 1725FWL 32.049789 N Lat, 103.512161 W Lon
At top prod interval reported below Sec 18 T26S R34E Mer NMP
NENW 792FNL 2290FWL
At total depth Sec 19 T26S R34E Mer NMP
SESW 199FSL 2275FEL10. Field and Pool, or Exploratory
WC025G09S25336D-UPPER WC11. Sec., T., R., M., or Block and Survey
or Area Sec 18 T26S R34E Mer NMP12. County or Parish
LEA13. State
NM14. Date Spudded
02/11/201815. Date T.D. Reached
05/21/201816. Date Completed
☐ D & A ☒ Ready to Prod.
12/14/201817. Elevations (DF, KB, RT, GL)*
3372 GL18. Total Depth: MD 22988
TVD 1291119. Plug Back T.D.: MD 12833
TVD20. Depth Bridge Plug Set: MD
TVD21. Type Electric & Other Mechanical Logs Run (Submit copy of each)
CBL22. Was well cored? ☒ No ☐ Yes (Submit analysis)
Was DST run? ☒ No ☐ Yes (Submit analysis)
Directional Survey? ☐ No ☒ Yes (Submit analysis)

23. Casing and Liner Record (Report all strings set in well)

Hole Size	Size/Grade	Wt. (#/ft.)	Top (MD)	Bottom (MD)	Stage Cementer Depth	No. of Sks. & Type of Cement	Slurry Vol. (BBL)	Cement Top*	Amount Pulled
14.750	10.750 J-55	45.5	0	813		770		0	364
8.750	7.625 P-110	29.7	0	12921		1094		1250	0
6.750	5.500 P-110	20.0	0	22980		861		11408	0

24. Tubing Record

Size	Depth Set (MD)	Packer Depth (MD)	Size	Depth Set (MD)	Packer Depth (MD)	Size	Depth Set (MD)	Packer Depth (MD)

25. Producing Intervals

26. Perforation Record

Formation	Top	Bottom	Perforated Interval	Size	No. Holes	Perf. Status
A) WOLFCAMP	13402	22847	13402 TO 22847		1174	OPEN
B)						
C)						
D)						

27. Acid, Fracture, Treatment, Cement Squeeze, Etc.

Depth Interval	Amount and Type of Material
13402 TO 22847	23,249,497# PROP, 0 GAL ACID

28. Production - Interval A

Date First Produced	Test Date	Hours Tested	Test Production	Oil BBL	Gas MCF	Water BBL	Oil Gravity Corr. API	Gas Gravity	Production Method
12/15/2018	01/09/2019	24	→	1565.0	2428.0	6230.0			
Choke Size	Tbg. Press. Flwg. SI	Csg. Press.	24 Hr. Rate	Oil BBL	Gas MCF	Water BBL	Gas:Oil Ratio	Well Status	
	0	500.0	→	1565	2428	6230	1551	POW	

28a. Production - Interval B

Date First Produced	Test Date	Hours Tested	Test Production	Oil BBL	Gas MCF	Water BBL	Oil Gravity Corr. API	Gas Gravity	Production Method
			→						
Choke Size	Tbg. Press. Flwg. SI	Csg. Press.	24 Hr. Rate	Oil BBL	Gas MCF	Water BBL	Gas:Oil Ratio	Well Status	
			→						

BUREAU OF LAND MANAGEMENT
CARLSBAD FIELD OFFICE

(See Instructions and spaces for additional data on reverse side)

ELECTRONIC SUBMISSION #450763 VERIFIED BY THE BLM WELL INFORMATION SYSTEM

** BLM REVISED ** BLM REVISED ** BLM REVISED ** BLM REVISED ** BLM REVISED **

Reclamation Due: 6/14/2019

28b. Production - Interval C

Date First Produced	Test Date	Hours Tested	Test Production	Oil BBL	Gas MCF	Water BBL	Oil Gravity Corr. API	Gas Gravity	Production Method
Choke Size	Tbg. Press. Flwg. SI	Csg. Press.	24 Hr. Rate	Oil BBL	Gas MCF	Water BBL	Gas:Oil Ratio	Well Status	

28c. Production - Interval D

Date First Produced	Test Date	Hours Tested	Test Production	Oil BBL	Gas MCF	Water BBL	Oil Gravity Corr. API	Gas Gravity	Production Method
Choke Size	Tbg. Press. Flwg. SI	Csg. Press.	24 Hr. Rate	Oil BBL	Gas MCF	Water BBL	Gas:Oil Ratio	Well Status	

29. Disposition of Gas(Sold, used for fuel, vented, etc.)
SOLD

30. Summary of Porous Zones (Include Aquifers):

Show all important zones of porosity and contents thereof: Cored intervals and all drill-stem tests, including depth interval tested, cushion used, time tool open, flowing and shut-in pressures and recoveries.

31. Formation (Log) Markers

Formation	Top	Bottom	Descriptions, Contents, etc.	Name	Top Meas. Depth
RUSTLER	767	1040	BARREN	RUSTLER	767
SALADO	1040	5156	BARREN	SALADO	1040
BASE OF SALT	5156	5274	BARREN	BASE OF SALT	5156
DELAWARE	5275	9452	OIL/GAS	DELAWARE	5274
BONE SPRING	9452	12568	OIL/GAS	BONE SPRING	9452
WOLFCAMP	12568		OIL/GAS	WOLFCAMP	12568

32. Additional remarks (include plugging procedure):

Intermediate casing as follows: TD 9-7/8" hole @ 9837' & 8 3/4" hole @ 12,935'. RIH w/ 215 jts 7-5/8" 29.7# P-110 BTC csg & 80 jts 7-5/8" 29.7# LIBERTY FJM csg, set @ 12,920.5'.

Production casing as follows: TD 8-3/4" hole @ 12,935' & 8-1/2" hole @ 22,988'. RIH w/ 248 jts 5-1/2" 20# P110EC VAMTOP HT, 229 jts 5-1/2" 20# P-110EC VAMSG csg, & 2 jts 4-1/2" 13.5# P-110 BTC csg, set @ 22,980.2'.

33. Circle enclosed attachments:

- | | | | |
|---|--------------------|---------------|-----------------------|
| 1. Electrical/Mechanical Logs (1 full set req'd.) | 2. Geologic Report | 3. DST Report | 4. Directional Survey |
| 5. Sundry Notice for plugging and cement verification | 6. Core Analysis | 7. Other: | |

34. I hereby certify that the foregoing and attached information is complete and correct as determined from all available records (see attached instructions):

Electronic Submission #450763 Verified by the BLM Well Information System.
For DEVON ENERGY PRODUCTION COMPAN, sent to the Hobbs
Committed to AFMSS for processing by DINAH NEGRETE on 04/22/2019 (19DCN0092SE)

Name (please print) REBECCA DEALTitle REGULATORY ANALYST

Signature _____ (Electronic Submission)

Date 01/15/2019

Title 18 U.S.C. Section 1001 and Title 43 U.S.C. Section 1212, make it a crime for any person knowingly and willfully to make to any department or agency of the United States any false, fictitious or fraudulent statements or representations as to any matter within its jurisdiction.

**** REVISED ** REVISED ** REVISED ** REVISED ** REVISED ** REVISED ** REVISED ****

District I
1625 N. French Dr., Hobbs, NM 88240
Phone: (575) 393-6161 Fax: (575) 393-0720
District II
811 S. First St., Artesia, NM 88210
Phone: (575) 748-1283 Fax: (575) 748-0720
District III
1000 Rio Brazos Road, Aztec, NM 87410
Phone: (505) 334-6178 Fax: (505) 334-6170
District IV
1220 S. St. Francis Dr., Santa Fe, NM 87505
Phone: (505) 476-3460 Fax: (505) 476-3462

State of New Mexico
Energy, Minerals & Natural Resources Department
OIL CONSERVATION DIVISION
1220 South St. Francis Dr.
Santa Fe, NM 87505

Form C-102
Revised August 1, 2011
Submit one copy to appropriate
District Office

☐ AMENDED REPORT

WELL LOCATION AND ACREAGE DEDICATION PLAT

¹ API Number 30-025-44093	² Pool Code 98094	³ Pool Name BOBCAT DRAW; UPPER WOLFCAMP
⁴ Property Code 30884	⁵ Property Name FIGHTING OKRA 18-19 FED	⁶ Well Number 7H
⁷ OGRID No. 6137	⁸ Operator Name DEVON ENERGY PRODUCTION COMPANY, L.P.	⁹ Elevation 3371.7

¹⁰ Surface Location

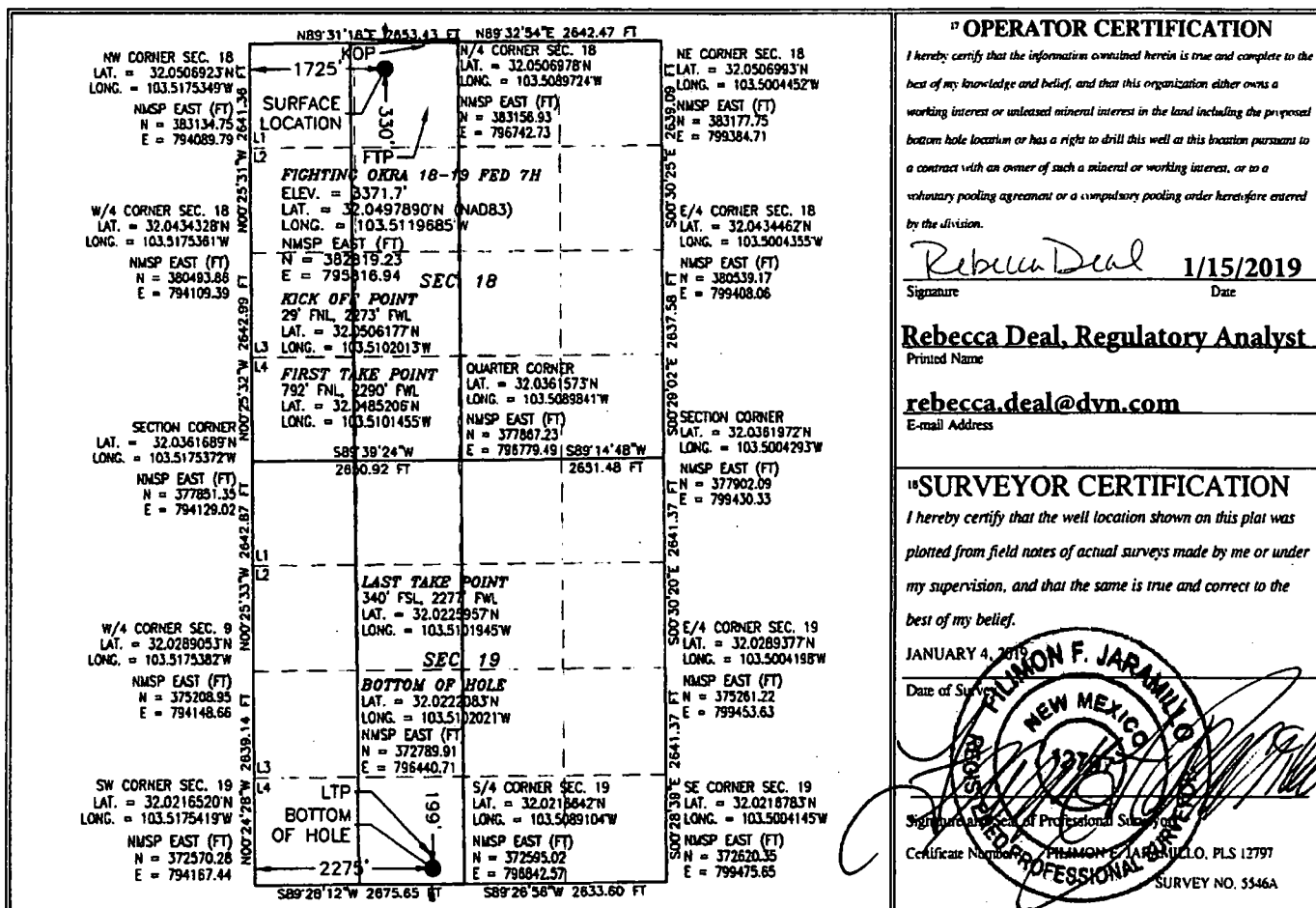
UL or lot no.	Section	Township	Range	Lot Idn	Feet from the	North/South line	Feet from the	East/West line	County
C	18	26 S	34 E		330	NORTH	1725	WEST	LEA

¹¹ Bottom Hole Location If Different From Surface

UL or lot no.	Section	Township	Range	Lot Idn	Feet from the	North/South line	Feet from the	East/West line	County
N	19	26 S	34 E		199	SOUTH	2275	WEST	LEA

¹² Dedicated Acres 320	¹³ Joint or Infill	¹⁴ Consolidation Code	¹⁵ Order No.
---	-------------------------------	----------------------------------	-------------------------

No allowable will be assigned to this completion until all interests have been consolidated or a non-standard unit has been approved by the division.



Intent ☐ As Drilled ☒ XX

API #
30-025-44093

Operator Name: DEVON ENERGY PRODUCTION COMPANY, L.P.	Property Name: FIGHTING OKRA 18-19 FED	Well Number 7H
--	---	-------------------

Kick Off Point (KOP)

UL C	Section 18	Township 26S	Range 34E	Lot	Feet 29	From N/S NORTH	Feet 2273	From E/W WEST	County LEA
Latitude 32.0506177					Longitude 103.5102013			NAD 83	

First Take Point (FTP)

UL C	Section 18	Township 26S	Range 34E	Lot	Feet 792	From N/S NORTH	Feet 2290	From E/W WEST	County LEA
Latitude 32.0485206					Longitude 103.5101455			NAD 83	

Last Take Point (LTP)

UL N	Section 19	Township 26S	Range 34E	Lot	Feet 340	From N/S SOUTH	Feet 2277	From E/W WEST	County LEA
Latitude 32.0225957					Longitude 103.5101945			NAD 83	

Is this well the defining well for the Horizontal Spacing Unit? ☐ N

Is this well an infill well? ☐ Y

If infill is yes please provide API if available, Operator Name and well number for Defining well for Horizontal Spacing Unit.

API #
30-025-43991

Operator Name: Devon Energy Production Co.	Property Name: Fighting Okra 18-18 Fed	Well Number 2H
---	---	-------------------

KZ 06/29/2018