

District I
1625 N. French Dr., Hobbs, NM 88240
Phone: (575) 393-6161 Fax: (575) 393-0720
District II
811 S. First St., Artesia, NM 88210
Phone: (575) 748-1283 Fax: (575) 748-9720
District III
1000 Rio Brazos Road, Aztec, NM 87410
Phone: (505) 334-6178 Fax: (505) 334-6170
District IV
1220 S. St. Francis Dr., Santa Fe, NM 87505
Phone: (505) 476-3460 Fax: (505) 476-3462

State of New Mexico
Energy, Minerals & Natural Resources
Department
OIL CONSERVATION DIVISION
1220 South St. Francis Dr.
Santa Fe, NM 87505

HOBBES OCD
RECEIVED
JUN 17 2019

FORM C-102
Revised August 1, 2011
Submit one copy to appropriate
District Office

AMENDED REPORT

WELL LOCATION AND ACREAGE DEDICATION PLAT

¹ API Number 30-025- 45368		² Pool Code 98094	³ Pool Name Bobcat Draw; Upper Wolfcamp
⁴ Property Code 320995	⁵ Property Name CONDOR 32 STATE COM		⁶ Well Number 7184
⁷ OGRID No. 7377	⁸ Operator Name EOG RESOURCES, INC.		⁹ Elevation 3329'

¹⁰Surface Location

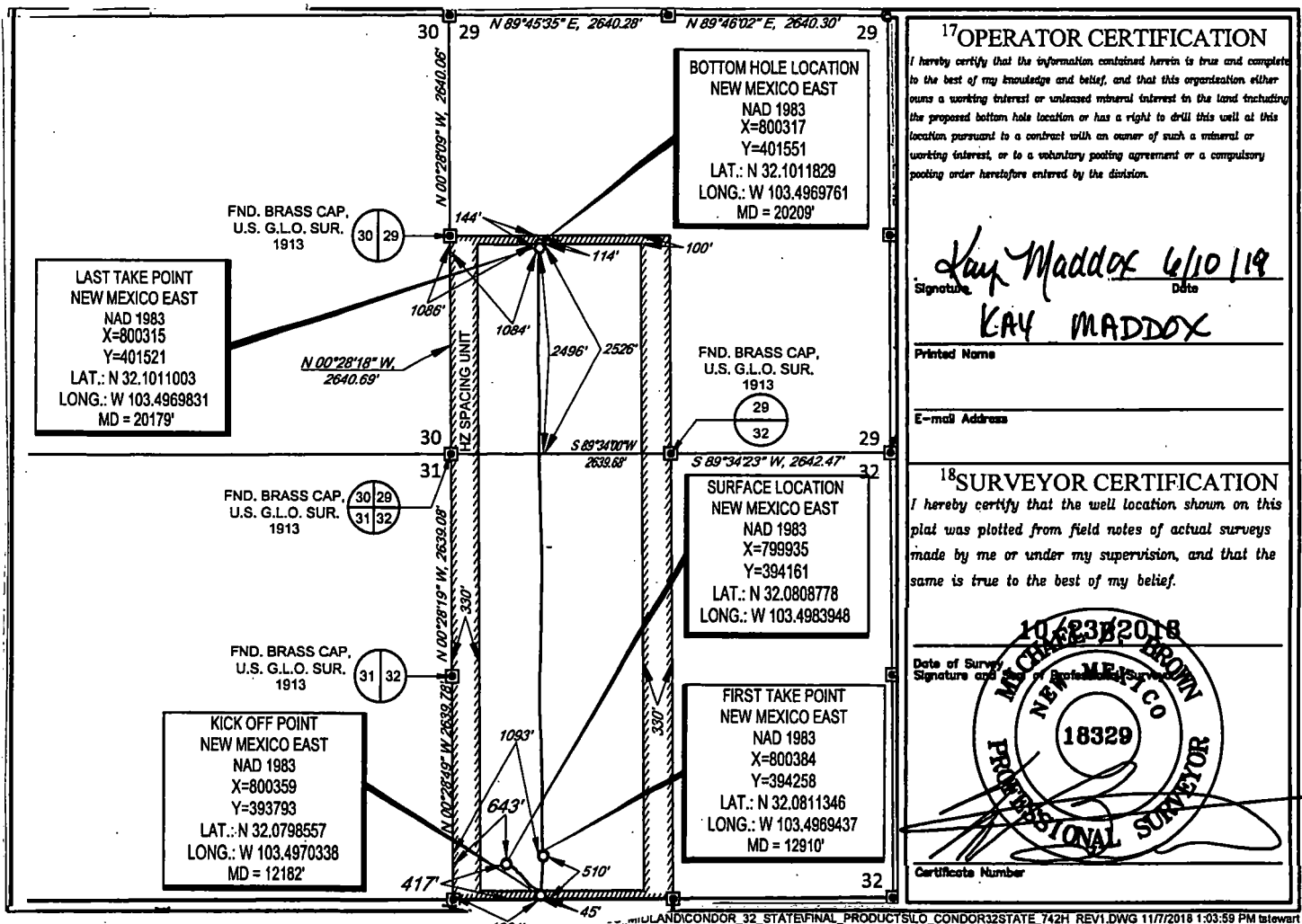
UL or lot no.	Section	Township	Range	Lot Idn	Feet from the	North/South line	Feet from the	East/West line	County
M	32	25-S	34-E	-	417'	SOUTH	643'	WEST	LEA

¹¹Bottom Hole Location If Different From Surface

UL or lot no.	Section	Township	Range	Lot Idn	Feet from the	North/South line	Feet from the	East/West line	County
L	29	25-S	34-E	-	2526'	SOUTH	1086'	WEST	LEA

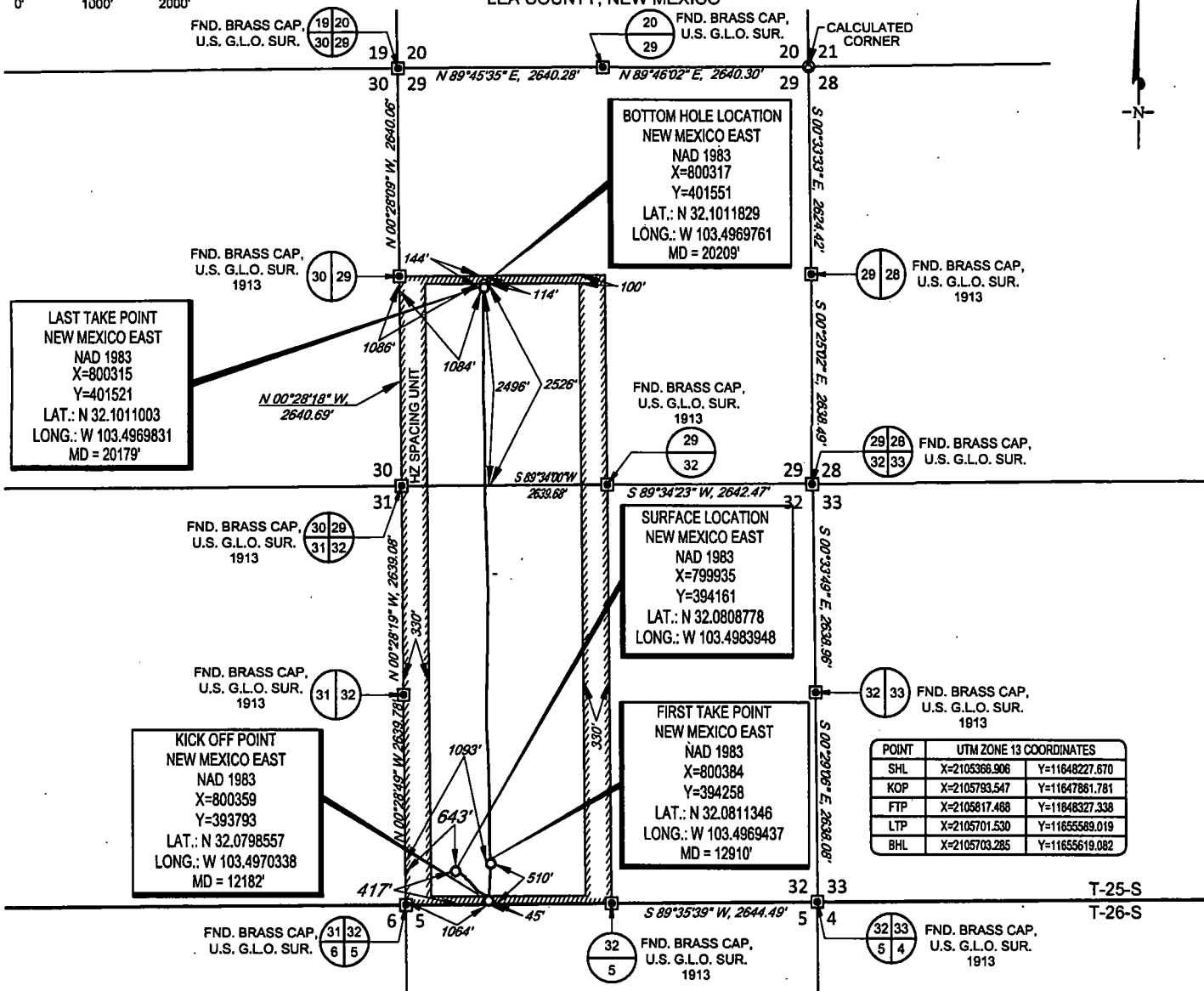
¹² Dedicated Acres 480.00	¹³ Joint or Infill	¹⁴ Consolidation Code	¹⁵ Order No.
--	-------------------------------	----------------------------------	-------------------------

No allowable will be assigned to this completion until all interests have been consolidated or a non-standard unit has been approved by the division.



SCALE: 1" = 2000'
 0' 1000' 2000'

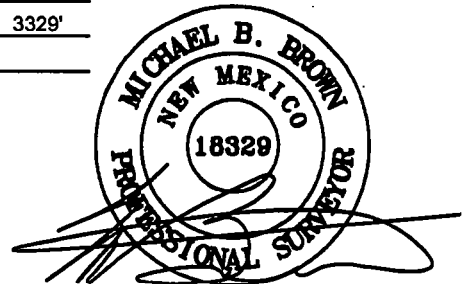
SECTION 32, TOWNSHIP 25-S, RANGE 34-E, N.M.P.M.
 LEA COUNTY, NEW MEXICO



LEASE NAME & WELL NO.: CONDOR 32 STATE COM #718H
 SECTION 32 TWP. 25-S RGE 34-E SURVEY N.M.P.M.
 COUNTY LEA STATE NM ELEVATION 3329'
 DESCRIPTION 417' FSL & 643' FWL

POINT	UTM ZONE 13 COORDINATES	
SHL	X=2105366.906	Y=11646227.670
KOP	X=2105793.547	Y=11647861.781
FTP	X=2105617.468	Y=11646327.338
LTP	X=2105701.530	Y=11655569.019
BHL	X=2105703.285	Y=11655619.082

TOPOGRAPHIC
 LOYALTY INNOVATION LEGACY
 1400 EVERMAN PARKWAY, Ste. 148 • FT. WORTH, TEXAS 76140
 TELEPHONE: (817) 744-7512 • FAX (817) 744-7554
 2803 NORTH BIG SPRING • MIDLAND, TEXAS 79705
 TELEPHONE: (432) 682-1653 OR (800) 767-1653 • FAX (432) 682-1743
 WWW.TOPOGRAPHIC.COM



Michael Blake Brown, P.S. No. 18329
 NOVEMBER 27, 2018



CONDOR 32 STATE COM #718H AS-COMPLETED	REVISION:
DATE: 05/07/19	
FILE:AD_CONDOR32STATE_718H	
DRAWN BY: TRG	
SHEET: 1 OF 1	

NOTES:
 1. ORIGINAL DOCUMENT SIZE: 8.5" X 11"
 2. ALL BEARINGS, DISTANCES, AND COORDINATE VALUES CONTAINED HEREIN ARE GRID BASED UPON THE NEW MEXICO COORDINATE SYSTEM OF 1983, EAST ZONE, U.S. SURVEY FEET.
 3. THIS WELL LOCATION SHOWN HEREON HAS BEEN SURVEYED ON THE GROUND UNDER MY SUPERVISION AND PREPARED ACCORDING TO THE EVIDENCE FOUND AT THE TIME OF SURVEY, AND DATA PROVIDED BY EOG RESOURCES, INC. THIS CERTIFICATION IS MADE AND LIMITED TO THOSE PERSONS OR ENTITIES SHOWN ON THE FACE OF THIS PLAT AND IS NON-TRANSFERABLE. THIS SURVEY IS CERTIFIED FOR THIS TRANSACTION ONLY.