

District I  
1623 N. French Dr., Hobbs, NM 88240  
Phone: (575) 393-6161 Fax: (575) 393-0720  
District II  
811 S. First St., Artesia, NM 88210  
Phone: (575) 748-1283 Fax: (575) 748-9720  
District III  
1000 Rio Brazos Road, Aztec, NM 87410  
Phone: (505) 334-6178 Fax: (505) 334-6170  
District IV  
1220 S. St. Francis Dr., Santa Fe, NM 87505  
Phone: (505) 476-3460 Fax: (505) 476-3462

State of New Mexico  
Energy, Minerals & Natural Resources  
Department  
OIL CONSERVATION DIVISION  
1220 South St. Francis Dr.  
Santa Fe, NM 87505

**HOBBS**  
AUG 05 2019  
**RECEIVED**

FORM C-102  
Revised August 1, 2011  
Submit one copy to appropriate  
District Office

AMENDED REPORT

**WELL LOCATION AND ACREAGE DEDICATION PLAT**

<sup>1</sup> API Number <b>30-025-44810</b>	<sup>2</sup> Pool Code <b>98234</b>	<sup>3</sup> Pool Name <b>WC-025 G-09 S263019C; WOLFCAMP</b>
<sup>4</sup> Property Code <b>320645</b>	<sup>5</sup> Property Name <b>MAGNOLIA STATE COM 26 36 22</b>	
<sup>6</sup> Well Number <b>125H</b>	<sup>7</sup> Operator Name <b>AMEREDEV OPERATING, LLC.</b>	
<sup>8</sup> OGRID No. <b>372224</b>	<sup>9</sup> Elevation <b>2908'</b>	

<sup>10</sup>Surface Location

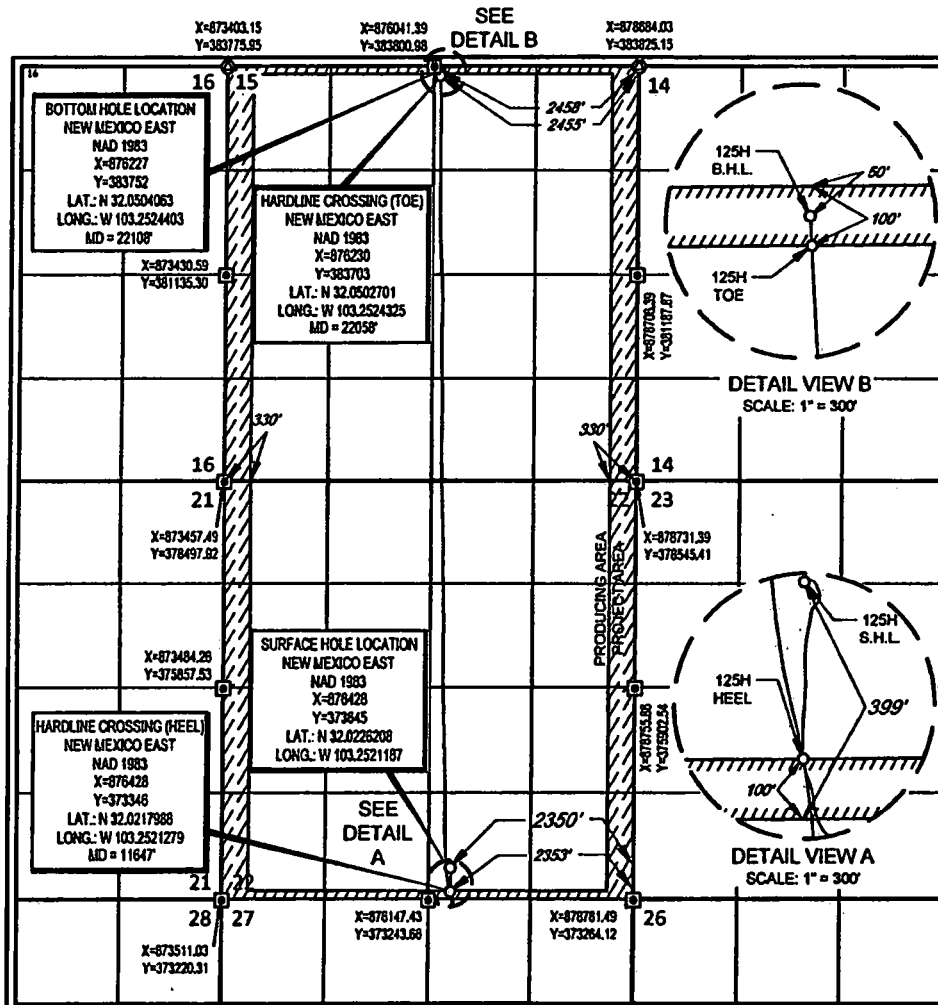
UL or lot no.	Section	Township	Range	Lot Idn	Feet from the	North/South line	Feet from the	East/West line	County
<b>0</b>	<b>22</b>	<b>26-S</b>	<b>36-E</b>	<b>-</b>	<b>399'</b>	<b>SOUTH</b>	<b>2350'</b>	<b>EAST</b>	<b>LEA</b>

<sup>11</sup>Bottom Hole Location If Different From Surface

UL or lot no.	Section	Township	Range	Lot Idn	Feet from the	North/South line	Feet from the	East/West line	County
<b>B</b>	<b>15</b>	<b>26-S</b>	<b>36-E</b>	<b>-</b>	<b>50'</b>	<b>NORTH</b>	<b>2458'</b>	<b>EAST</b>	<b>LEA</b>

<sup>12</sup> Dedicated Acres <b>640</b>	<sup>13</sup> Joint or Infill	<sup>14</sup> Consolidation Code <b>C</b>	<sup>15</sup> Order No.
---	-------------------------------	--	-------------------------

No allowable will be assigned to this completion until all interests have been consolidated or a non-standard unit has been approved by the division.



**17 OPERATOR CERTIFICATION**  
I hereby certify that the information contained herein is true and complete to the best of my knowledge and belief, and that this operation either owns a working interest or unshared mineral interest in the land including the proposed bottom hole location or has a right to drill this well at this location pursuant to a contract with an owner of such a mineral or working interest, or to a voluntary pooling agreement or a compulsory pooling order heretofore entered by the division.

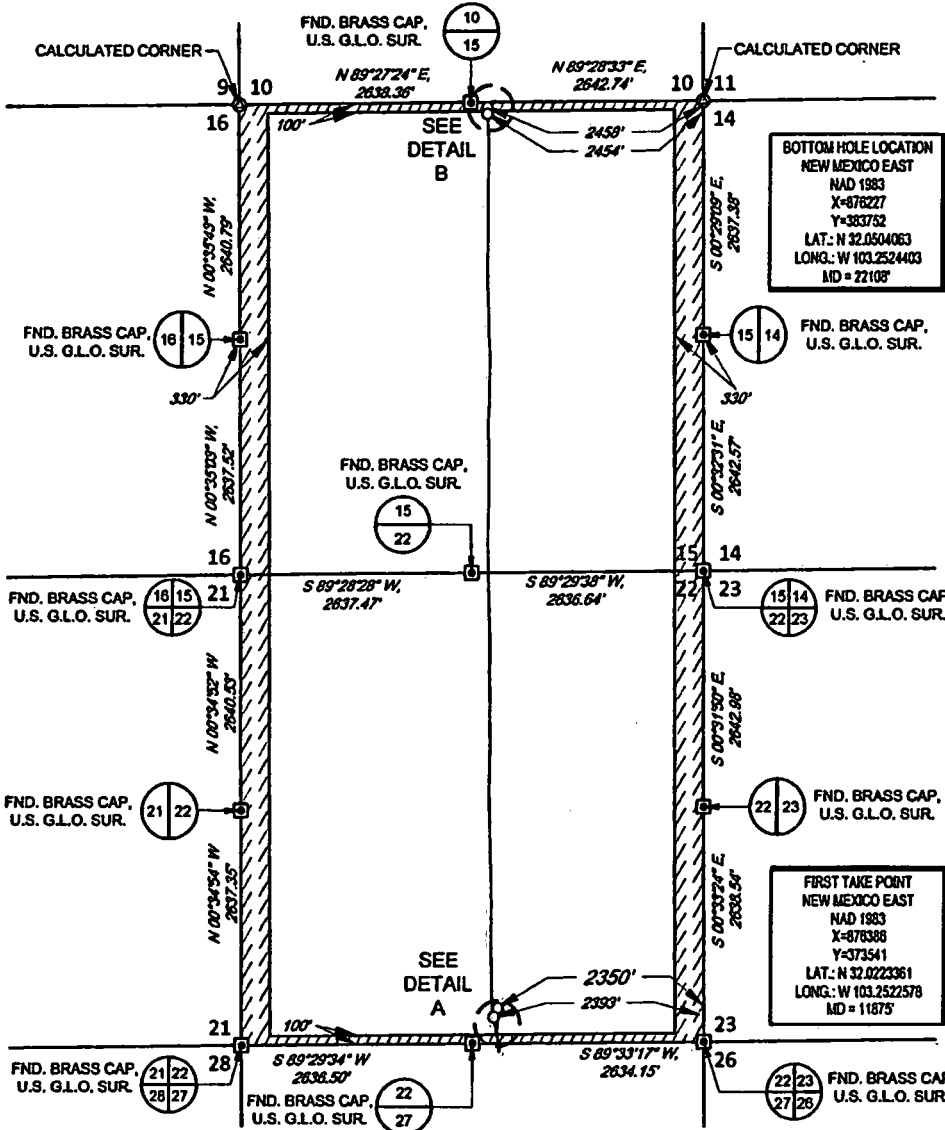
Signature: *Zachary Boyd* Date: **7-23-19**  
Printed Name: **Zachary Boyd**  
E-mail Address: **zboyd@ameredev.com**

**18 SURVEYOR CERTIFICATION**  
I hereby certify that the well location shown on this plat was plotted from field notes of actual surveys made by me or under my supervision, and that the same is true to the best of my belief.

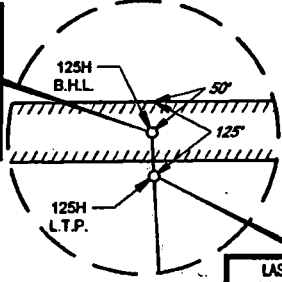
Date of Survey: **07/27/2018**  
Signature and Seal of Professional Surveyor: \_\_\_\_\_  
Certificate Number: \_\_\_\_\_

SCALE: 1" = 2000'  
 0 1000 2000'

SECTION 22, TOWNSHIP 26-S, RANGE 36-E, N.M.P.M.  
 LEA COUNTY, NEW MEXICO

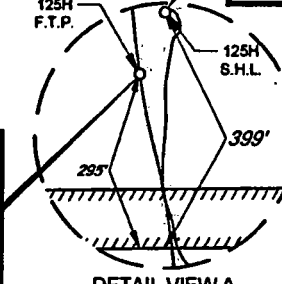


**BOTTOM HOLE LOCATION**  
 NEW MEXICO EAST  
 NAD 1983  
 X=878227  
 Y=383752  
 LAT.: N 32.0504063  
 LONG.: W 103.2524403  
 MD = 22108'



**LAST TAKE POINT**  
 NEW MEXICO EAST  
 NAD 1983  
 X=878231  
 Y=383678  
 LAT.: N 32.0502023  
 LONG.: W 103.2524287  
 MD = 22033'

**SURFACE HOLE LOCATION**  
 NEW MEXICO EAST  
 NAD 1983  
 X=876428  
 Y=373845  
 LAT.: N 32.0226208  
 LONG.: W 103.2521187



**FIRST TAKE POINT**  
 NEW MEXICO EAST  
 NAD 1983  
 X=876388  
 Y=373541  
 LAT.: N 32.0223361  
 LONG.: W 103.2522578  
 MD = 11875'

LEASE NAME & WELL NO.: MAGNOLIA STATE COM 26 36 22 125H  
 SECTION 22 TWP 26-S RGE 36-E SURVEY N.M.P.M.  
 COUNTY LEA STATE NM ELEVATION 2908'  
 DESCRIPTION 399' FSL & 2350' FEL



John Trevor Carnegie, R.P.L.S. No. 11401  
 JULY 17, 2019

**AMEREDEV**  
 AMEREDEV OPERATING, LLC

**TOPOGRAPHIC**  
 LOYALTY. INNOVATION. LEGACY  
 1400 EVERMAN PARKWAY, Ste. 148 • FT. WORTH, TEXAS 76140  
 TELEPHONE: (817) 744-7512 • FAX (817) 744-7548  
 TEXAS FIRM REGISTRATION NO. 10042504  
 WWW.TOPOGRAPHIC.COM

MAGNOLIA STATE COM 26 36 22 125H AS-COMPLETED	REVISION:
DATE: 07/17/19	
FILE: AD MAGNOLIA STATE COM 26 36 22 125H	
DRAWN BY: GJU	
SHEET: 1 OF 1	

NOTES:  
 1. ORIGINAL DOCUMENT SIZE: 8.5" X 11"  
 2. ALL BEARINGS, DISTANCES, AND COORDINATE VALUES CONTAINED HEREIN ARE GRID BASED UPON THE NEW MEXICO STATE PLANE COORDINATE SYSTEM, EAST ZONE, U.S. SURVEY FEET, NORTH AMERICAN DATUM 1983.  
 3. THIS WELL LOCATION SHOWN HEREON HAS BEEN SURVEYED ON THE GROUND UNDER MY SUPERVISION AND PREPARED ACCORDING TO THE EVIDENCE FOUND AT THE TIME OF SURVEY, AND DATA PROVIDED BY AMEREDEV OPERATING, LLC. THIS CERTIFICATION IS MADE AND LIMITED TO THOSE PERSONS OR ENTITIES SHOWN ON THE FACE OF THIS PLAT AND IS NON-TRANSFERABLE. THIS SURVEY IS CERTIFIED FOR THIS TRANSACTION ONLY.