

District I
1625 N. French Dr., Hobbs, NM 88240
Phone: (575) 393-6161 Fax: (575) 393-0720
District II
811 S. First St., Artesia, NM 88210
Phone: (575) 748-1283 Fax: (575) 748-9720
District III
1000 Rio Brazos Road, Aztec, NM 87410
Phone: (505) 334-6178 Fax: (505) 334-6170
District IV
1220 S. St. Francis Dr., Santa Fe, NM 87505
Phone: (505) 476-3460 Fax: (505) 476-3462

State of New Mexico
Energy, Minerals & Natural Resources
Department
OIL CONSERVATION DIVISION
1220 South St. Francis Dr.
Santa Fe, NM 87505

FORM C-102
Revised August 1, 2011
Submit one copy to appropriate
District Office

RECEIVED ☐ AMENDED REPORT

WELL LOCATION AND ACREAGE DEDICATION PLAT

| | | |
|--|---|--|
| ¹ API Number 30-025- 46353 | ² Pool Code 98092-2220 | ³ Pool Name ANTELOPE RIDGE: Wolfcamp |
| ⁴ Property Code 726100 | ⁵ Property Name KESTREL 26 FED | ⁶ Well Number #701H |
| ⁷ OGRID No. 7377 | ⁸ Operator Name EOG RESOURCES, INC. | ⁹ Elevation 3428' |

¹⁰Surface Location

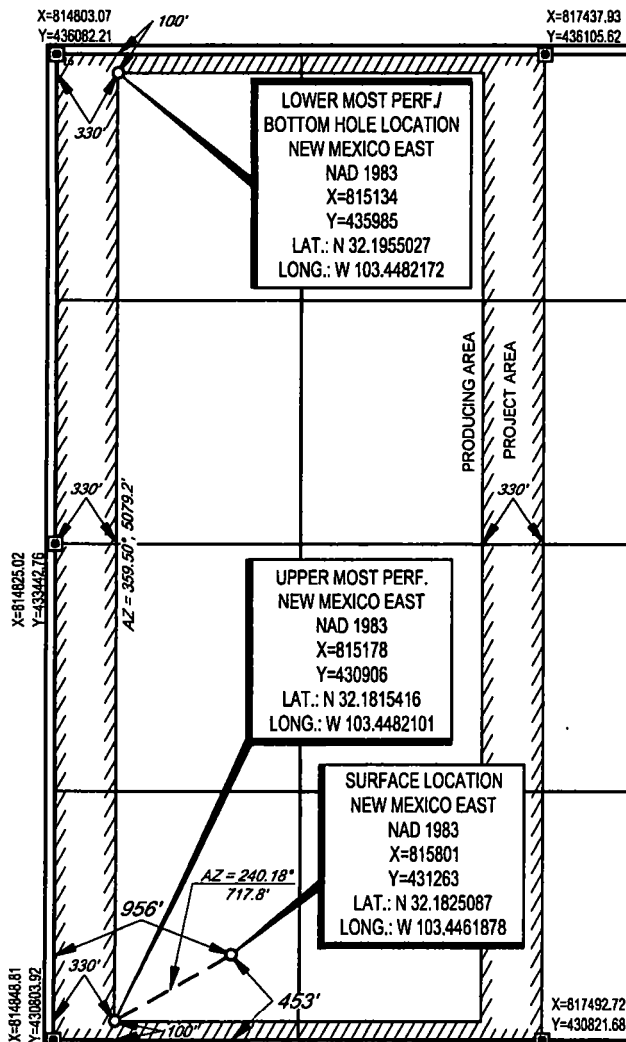
| | | | | | | | | | |
|--------------------|---------------|------------------|---------------|--------------|-----------------------|---------------------------|-----------------------|------------------------|---------------|
| UL or lot no. M | Section 26 | Township 24-S | Range 34-E | Lot Idn - | Feet from the 453' | North/South line SOUTH | Feet from the 956' | East/West line WEST | County LEA |
|--------------------|---------------|------------------|---------------|--------------|-----------------------|---------------------------|-----------------------|------------------------|---------------|

¹¹Bottom Hole Location If Different From Surface

| | | | | | | | | | |
|--------------------|---------------|------------------|---------------|--------------|-----------------------|---------------------------|-----------------------|------------------------|---------------|
| UL or lot no. D | Section 26 | Township 24-S | Range 34-E | Lot Idn - | Feet from the 100' | North/South line NORTH | Feet from the 330' | East/West line WEST | County LEA |
|--------------------|---------------|------------------|---------------|--------------|-----------------------|---------------------------|-----------------------|------------------------|---------------|

| | | | |
|---|-------------------------------|----------------------------------|-------------------------|
| ¹² Dedicated Acres 320.00 | ¹³ Joint or Infill | ¹⁴ Consolidation Code | ¹⁵ Order No. |
|---|-------------------------------|----------------------------------|-------------------------|

No allowable will be assigned to this completion until all interests have been consolidated or a non-standard unit has been approved by the division.



¹⁷OPERATOR CERTIFICATION

I hereby certify that the information contained herein is true and complete to the best of my knowledge and belief, and that this organization either owns a working interest or unleased mineral interest in the land including the proposed bottom hole location or has a right to drill this well at this location pursuant to a contract with an owner of such a mineral or working interest, or to a voluntary pooling agreement or a compulsory pooling order heretofore entered by the division.

Signature: Stan Wagner Date: 12/03/18

Printed Name: Stan Wagner

E-mail Address

¹⁸SURVEYOR CERTIFICATION

I hereby certify that the well location shown on this plat was plotted from field notes of actual surveys made by me or under my supervision, and that the same is true to the best of my belief.

Date of Survey: 08/17/2018
Signature: [Signature]
Certificate Number: 18329
Surveyor: MICHAEL BROWN
Professional Surveyor