

District I  
1625 N. French Dr., Hobbs, NM 88240  
Phone: (575) 393-6161 Fax: (575) 393-0720

District II  
811 S. First St., Artesia, NM 88210  
Phone: (575) 748-1283 Fax: (575) 748-9720

District III  
1000 Rio Brazos Road, Aztec, NM 87410  
Phone: (505) 334-6178 Fax: (505) 334-6170

District IV  
1220 S. St. Francis Dr., Santa Fe, NM 87505  
Phone: (505) 476-3460 Fax: (505) 476-3462

State of New Mexico  
Energy, Minerals & Natural Resources Department  
OIL CONSERVATION DIVISION  
1220 South St. Francis Dr.  
Santa Fe, NM 87505

Form C-102  
Revised August 1, 2011  
Submit one copy to appropriate  
District Office

HOBBS OCD  
AUG 29 2019  
RECEIVED

☐ AMENDED REPORT

WELL LOCATION AND ACREAGE DEDICATION PLAT

<sup>1</sup> API Number <b>30-025-45392</b>		<sup>2</sup> Pool Code <b>7320</b>	<sup>3</sup> Pool Name <b>BRINNINSTOOL;BONE SPRING</b>
<sup>4</sup> Property Code	<sup>5</sup> Property Name <b>NORTH THISTLE 15-10 STATE COM</b>		<sup>6</sup> Well Number <b>1H</b>
<sup>7</sup> OGRID No. <b>6137</b>	<sup>8</sup> Operator Name <b>DEVON ENERGY PRODUCTION COMPANY, L.P.</b>		<sup>9</sup> Elevation <b>3710.3</b>

<sup>10</sup> Surface Location

UL or lot no.	Section	Township	Range	Lot Idn	Feet from the	North/South line	Feet from the	East/West line	County
<b>M</b>	<b>15</b>	<b>23 S</b>	<b>33 E</b>		<b>415</b>	<b>SOUTH</b>	<b>760</b>	<b>WEST</b>	<b>LEA</b>

<sup>11</sup> Bottom Hole Location If Different From Surface

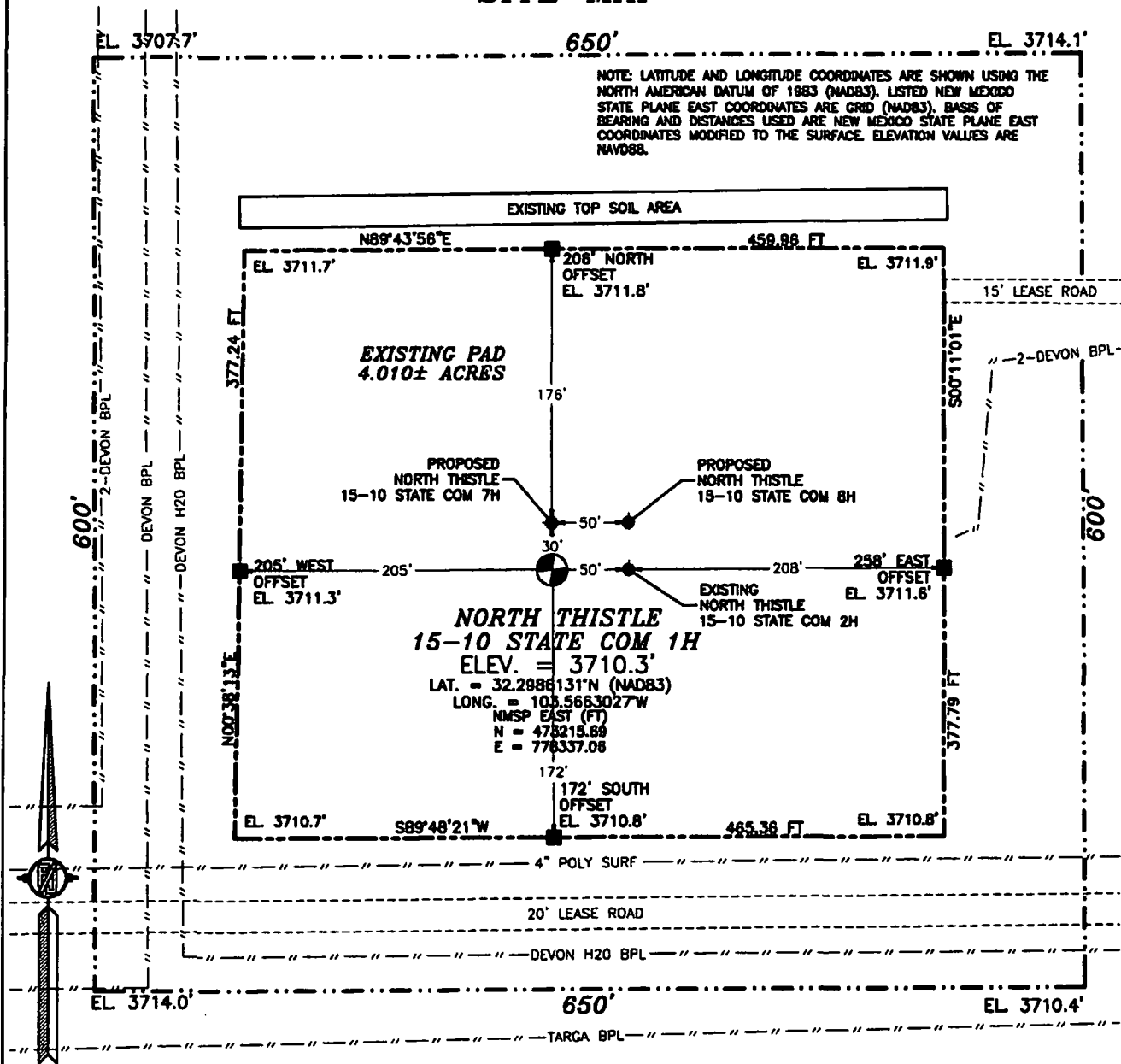
UL or lot no.	Section	Township	Range	Lot Idn	Feet from the	North/South line	Feet from the	East/West line	County
<b>D</b>	<b>10</b>	<b>23 S</b>	<b>33 E</b>		<b>20</b>	<b>NORTH</b>	<b>380</b>	<b>WEST</b>	<b>LEA</b>

<sup>12</sup> Dedicated Acres <b>640</b>	<sup>13</sup> Joint or Infill	<sup>14</sup> Consolidation Code	<sup>15</sup> Order No.
---------------------------------------------	-------------------------------	----------------------------------	-------------------------

No allowable will be assigned to this completion until all interests have been consolidated or a non-standard unit has been approved by the division.

<p><b>" OPERATOR CERTIFICATION</b></p> <p>I hereby certify that the information contained herein is true and complete to the best of my knowledge and belief, and that this organization either owns a working interest or unleased mineral interest in the land including the proposed bottom hole location or has a right to drill this well at this location pursuant to a contract with an owner of such a mineral or working interest, or to a voluntary pooling agreement or a compulsory pooling order heretofore entered by the division.</p> <p><u>Rebecca Deal</u> <b>12/6/2018</b> Signature Date</p> <p><b>Rebecca Deal, Regulatory Analyst</b> Printed Name</p> <p><u>rebecca.deal@dvn.com</u> E-mail Address</p>		<p><b>" SURVEYOR CERTIFICATION</b></p> <p>I hereby certify that the well location shown on this plat was plotted from field notes of actual surveys made by me or under my supervision, and that the same is true and correct to the best of my belief.</p> <p>NOVEMBER 8, 2019 Date of Survey</p> <p><u>FILIMON F. JARAMILLO</u> Signature and Seal of Professional Surveyor</p> <p>Certificate Number <b>FILIMON F. JARAMILLO, PLS 12797</b> SURVEY NO. 3670D</p>	
--------------------------------------------------------------------------------------------------------------------------------------------------------------------------------------------------------------------------------------------------------------------------------------------------------------------------------------------------------------------------------------------------------------------------------------------------------------------------------------------------------------------------------------------------------------------------------------------------------------------------------------------------------------------------------------------------------------------------------------------	--	---------------------------------------------------------------------------------------------------------------------------------------------------------------------------------------------------------------------------------------------------------------------------------------------------------------------------------------------------------------------------------------------------------------------------------------------------------------------------------	--

SECTION 15, TOWNSHIP 23 SOUTH, RANGE 33 EAST, N.M.P.M.  
LEA COUNTY, STATE OF NEW MEXICO  
SITE MAP



0 50 100 200  
SCALE 1" = 100'

### DIRECTIONS TO LOCATION

FROM THE INTERSECTION OF STATE HIGHWAY 128 AND  
CR 21 (DELAWARE BASIN) GO NORTH ON CR 21  
APPROX. 6.1 MILES TO A LEASE ROAD ON LEFT (WEST)  
TURN WEST GO APPROX. 3.1 MILES TO A LEASE ROAD  
ON RIGHT (NORTH), TURN NORTH GO 0.1 MILE TO A  
LEASE ROAD ON LEFT (WEST), TURN WEST GO APPROX.  
634' TO THE NORTHEAST PAD CORNER FOR THIS  
LOCATION.

**DEVON ENERGY PRODUCTION COMPANY, L.P.  
NORTH THISTLE 15-10 STATE COM 1H  
LOCATED 415 FT. FROM THE SOUTH LINE  
AND 760 FT. FROM THE WEST LINE OF  
SECTION 15, TOWNSHIP 23 SOUTH,  
RANGE 33 EAST, N.M.P.M.  
LEA COUNTY, STATE OF NEW MEXICO**

**NOVEMBER 8, 2018**

**SURVEY NO. 3870D**

**MADRON SURVEYING, INC.** 301 SOUTH CANAL CARLSBAD, NEW MEXICO  
(575) 234-3341

EXISTING TOP SOIL AREA

Diagram illustrating the layout of the existing top soil area, showing four North Thistle 15-10 State Com plots (7H, 8H, 1H, 2H) arranged in a central square. The plots are labeled as follows:

- NORTH THISTLE 15-10 STATE COM 7H
- NORTH THISTLE 15-10 STATE COM 8H
- NORTH THISTLE 15-10 STATE COM 1H
- NORTH THISTLE 15-10 STATE COM 2H

Dimensions and measurements are provided for the plots and the overall area:

- Plot dimensions: 120' x 120' (for each of the four plots).
- Central square dimensions: 88' x 88'.
- Overall dimensions: 347' (width) and 378' (length).
- Offsets: 56' (top), 52' (bottom), 25' (right), and 85' (left).

0 50 100 200  
SCALE 1" = 100'

**MADRON SURVEYING, INC.** 301 SOUTH CANAL CARLSBAD, NEW MEXICO  
(575) 234-3341

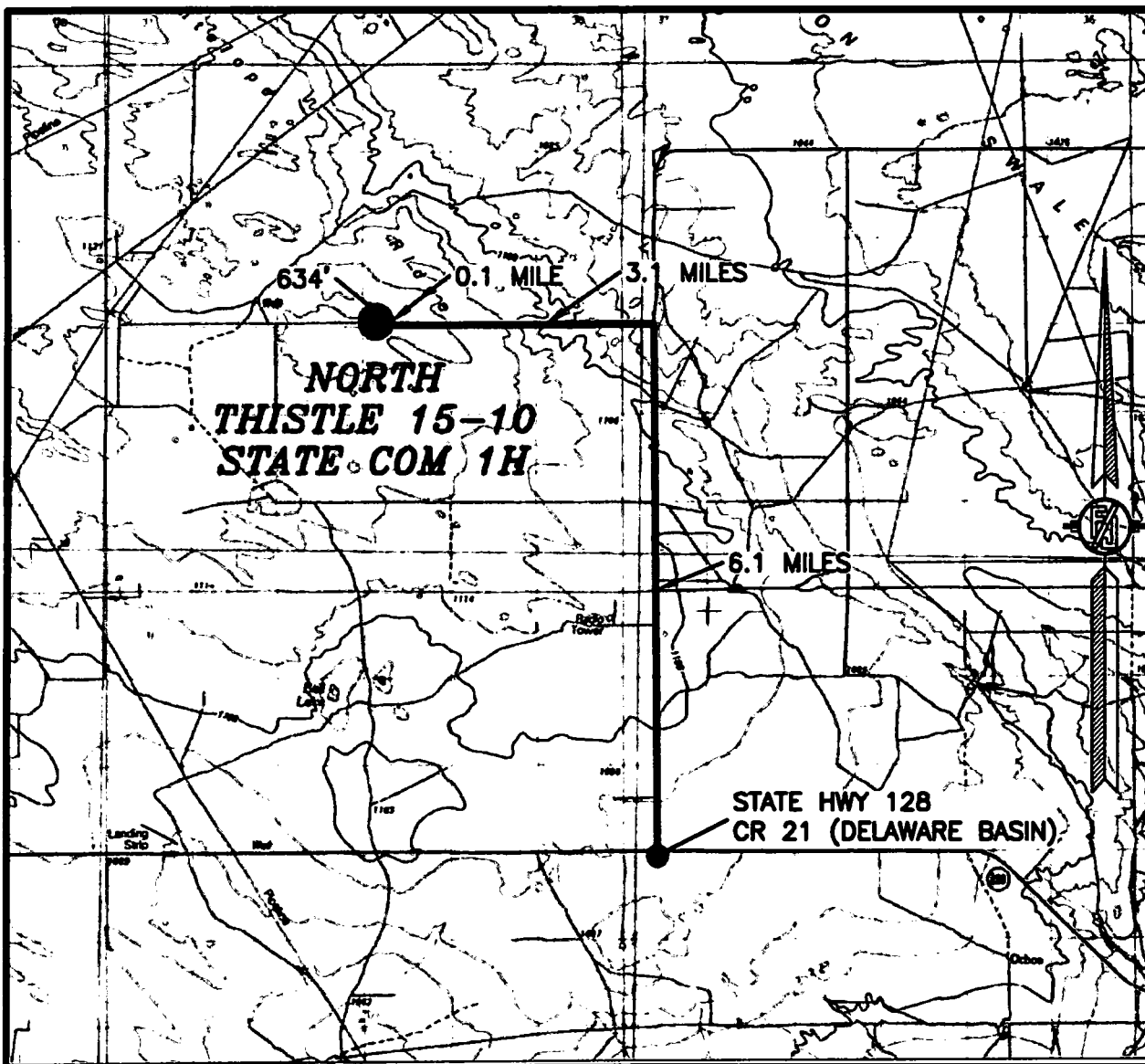
The map is a topographic representation of the Thistle 15-10 area. It features a grid system with horizontal and vertical lines. Contour lines are drawn to show elevation, with labels such as 3700, 3720, 3740, 3760, 3780, 3800, 3820, 3840, 3860, 3880, 3900, 3920, 3940, 3960, 3980, 4000, 4020, 4040, 4060, 4080, 4100, 4120, 4140, 4160, 4180, 4200, 4220, 4240, 4260, 4280, 4300, 4320, 4340, 4360, 4380, 4400, 4420, 4440, 4460, 4480, 4500, 4520, 4540, 4560, 4580, 4600, 4620, 4640, 4660, 4680, 4700, 4720, 4740, 4760, 4780, 4800, 4820, 4840, 4860, 4880, 4900, 4920, 4940, 4960, 4980, 5000, 5020, 5040, 5060, 5080, 5100, 5120, 5140, 5160, 5180, 5200, 5220, 5240, 5260, 5280, 5300, 5320, 5340, 5360, 5380, 5400, 5420, 5440, 5460, 5480, 5500, 5520, 5540, 5560, 5580, 5600, 5620, 5640, 5660, 5680, 5700, 5720, 5740, 5760, 5780, 5800, 5820, 5840, 5860, 5880, 5900, 5920, 5940, 5960, 5980, 6000, 6020, 6040, 6060, 6080, 6100, 6120, 6140, 6160, 6180, 6200, 6220, 6240, 6260, 6280, 6300, 6320, 6340, 6360, 6380, 6400, 6420, 6440, 6460, 6480, 6500, 6520, 6540, 6560, 6580, 6600, 6620, 6640, 6660, 6680, 6700, 6720, 6740, 6760, 6780, 6800, 6820, 6840, 6860, 6880, 6900, 6920, 6940, 6960, 6980, 7000, 7020, 7040, 7060, 7080, 7100, 7120, 7140, 7160, 7180, 7200, 7220, 7240, 7260, 7280, 7300, 7320, 7340, 7360, 7380, 7400, 7420, 7440, 7460, 7480, 7500, 7520, 7540, 7560, 7580, 7600, 7620, 7640, 7660, 7680, 7700, 7720, 7740, 7760, 7780, 7800, 7820, 7840, 7860, 7880, 7900, 7920, 7940, 7960, 7980, 8000, 8020, 8040, 8060, 8080, 8100, 8120, 8140, 8160, 8180, 8200, 8220, 8240, 8260, 8280, 8300, 8320, 8340, 8360, 8380, 8400, 8420, 8440, 8460, 8480, 8500, 8520, 8540, 8560, 8580, 8600, 8620, 8640, 8660, 8680, 8700, 8720, 8740, 8760, 8780, 8800, 8820, 8840, 8860, 8880, 8900, 8920, 8940, 8960, 8980, 9000, 9020, 9040, 9060, 9080, 9100, 9120, 9140, 9160, 9180, 9200, 9220, 9240, 9260, 9280, 9300, 9320, 9340, 9360, 9380, 9400, 9420, 9440, 9460, 9480, 9500, 9520, 9540, 9560, 9580, 9600, 9620, 9640, 9660, 9680, 9700, 9720, 9740, 9760, 9780, 9800, 9820, 9840, 9860, 9880, 9900, 9920, 9940, 9960, 9980, 10000. The map is labeled 'NORTH THISTLE 15-10 STATE COM 1H'. Key features include an 'Oil Well' on the left, a 'Gravel Pit' on the left, a 'Tank' on the right, and a '3702 Δ Brinning' on the right. The map is overlaid with a grid and contour lines.

**NOT TO SCALE**

**NOVEMBER 8, 2018**

**MADRON SURVEYING, INC.** 301 SOUTH CANAL CARLSBAD, NEW MEXICO SURVEY NO. 3670D  
(575) 234-3341

**SECTION 15, TOWNSHIP 23 SOUTH, RANGE 33 EAST, N.M.P.M.  
LEA COUNTY, STATE OF NEW MEXICO  
VICINITY MAP**



**DISTANCES IN MILES**

**NOT TO SCALE**

**DIRECTIONS TO LOCATION**

FROM THE INTERSECTION OF STATE HIGHWAY 128 AND CR 21 (DELAWARE BASIN) GO NORTH ON CR 21 APPROX. 6.1 MILES TO A LEASE ROAD ON LEFT (WEST) TURN WEST GO APPROX. 3.1 MILES TO A LEASE ROAD ON RIGHT (NORTH), TURN NORTH GO 0.1 MILE TO A LEASE ROAD ON LEFT (WEST), TURN WEST GO APPROX. 634' TO THE NORTHEAST PAD CORNER FOR THIS LOCATION.

**DEVON ENERGY PRODUCTION COMPANY, L.P.  
NORTH THISTLE 15-10 STATE COM 1H**

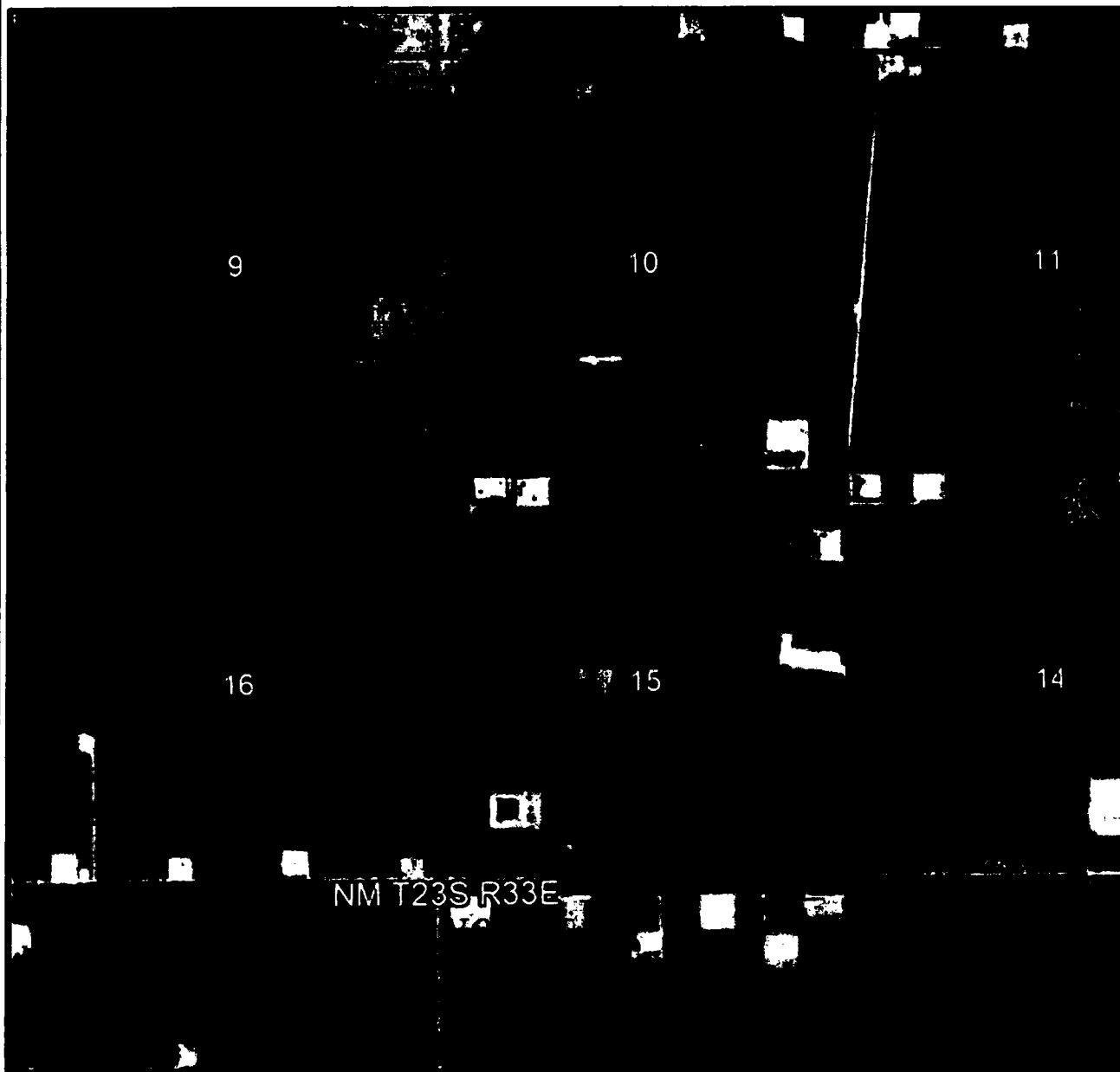
**LOCATED 415 FT. FROM THE SOUTH LINE  
AND 760 FT. FROM THE WEST LINE OF  
SECTION 15, TOWNSHIP 23 SOUTH,  
RANGE 33 EAST, N.M.P.M.  
LEA COUNTY, STATE OF NEW MEXICO**

**NOVEMBER 8, 2018**

**SURVEY NO. 3670D**

**MADRON SURVEYING, INC. 301 SOUTH CANAL (575) 234-3341 CARLSBAD, NEW MEXICO**

**SECTION 15, TOWNSHIP 23 SOUTH, RANGE 33 EAST, N.M.P.M.  
LEA COUNTY, STATE OF NEW MEXICO  
AERIAL PHOTO**



**NOT TO SCALE  
AERIAL PHOTO:  
GOOGLE EARTH  
NOV. 2017**

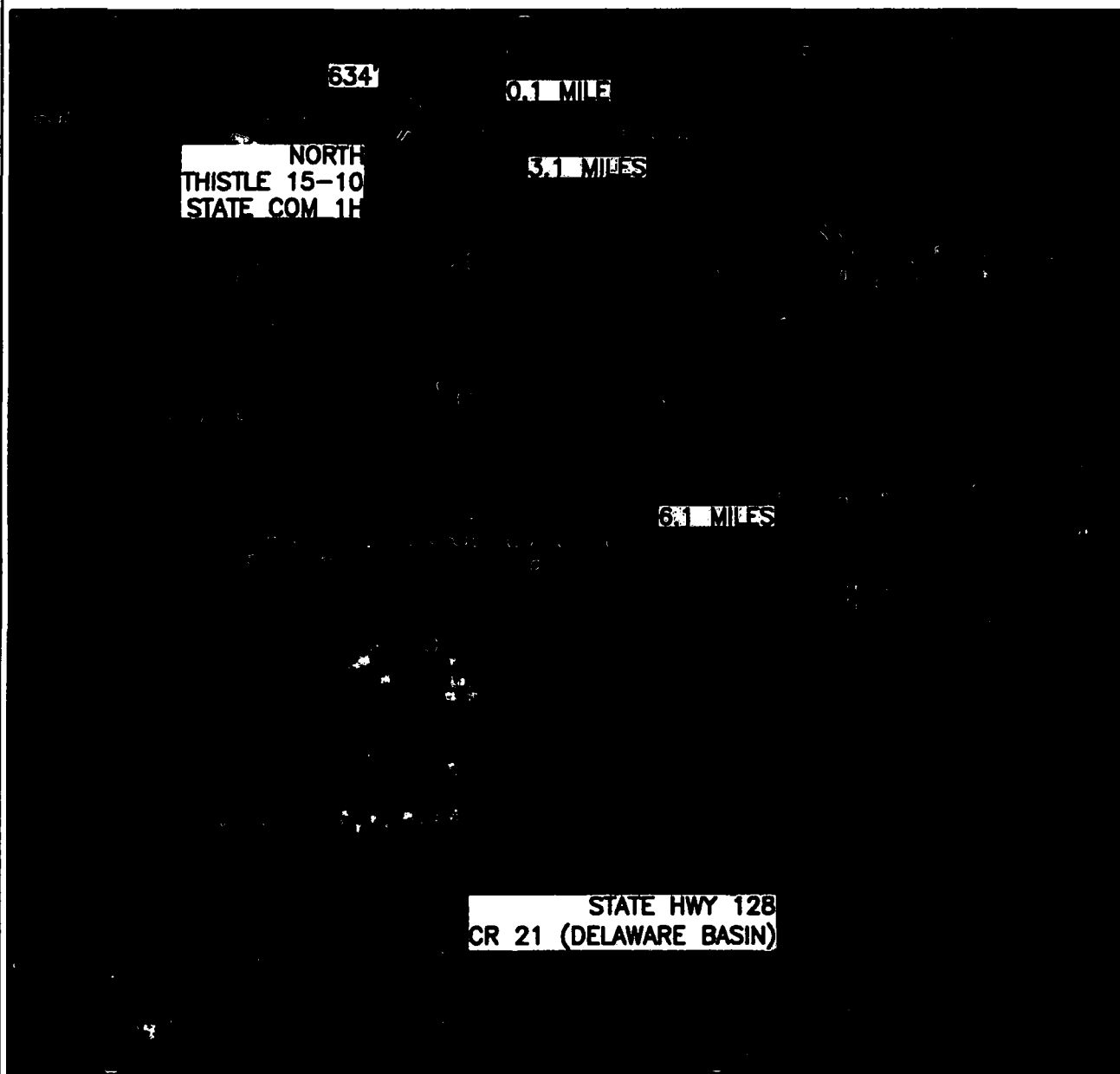
**DEVON ENERGY PRODUCTION COMPANY, L.P.  
NORTH THISTLE 15-10 STATE COM 1H  
LOCATED 415 FT. FROM THE SOUTH LINE  
AND 760 FT. FROM THE WEST LINE OF  
SECTION 15, TOWNSHIP 23 SOUTH,  
RANGE 33 EAST, N.M.P.M.  
LEA COUNTY, STATE OF NEW MEXICO**

**NOVEMBER 8, 2018**

**SURVEY NO. 3670D**

**MADRON SURVEYING, INC. 301 SOUTH CANAL (575) 234-3341 CARLSBAD, NEW MEXICO**

**SECTION 15, TOWNSHIP 23 SOUTH, RANGE 33 EAST, N.M.P.M.  
LEA COUNTY, STATE OF NEW MEXICO  
AERIAL ACCESS ROUTE MAP**



NOT TO SCALE  
AERIAL PHOTO:  
GOOGLE EARTH  
NOV. 2017

**DEVON ENERGY PRODUCTION COMPANY, L.P.  
NORTH THISTLE 15-10 STATE COM 1H  
LOCATED 415 FT. FROM THE SOUTH LINE  
AND 760 FT. FROM THE WEST LINE OF  
SECTION 15, TOWNSHIP 23 SOUTH,  
RANGE 33 EAST, N.M.P.M.  
LEA COUNTY, STATE OF NEW MEXICO**

**NOVEMBER 8, 2018**

**SURVEY NO. 3670D**

**MADRON SURVEYING, INC. 301 SOUTH CANAL (575) 234-3341 CARLSBAD, NEW MEXICO**