

District I
1625 N. French Dr., Hobbs, NM 88240
Phone: (575) 393-6161 Fax: (575) 393-0720
District II
811 S. First St., Artesia, NM 88210
Phone: (575) 748-1283 Fax: (575) 748-9720
District III
1000 Rio Brazos Road, Aztec, NM 87410
Phone: (505) 334-6178 Fax: (505) 334-6170
District IV
1220 S. St. Francis Dr., Santa Fe, NM 87505
Phone: (505) 476-3460 Fax: (505) 476-3462

State of New Mexico
Energy, Minerals & Natural Resources Department
OIL CONSERVATION DIVISION
1220 South St. Francis Dr.
Santa Fe, NM 87505

Form C-102
Revised August 1, 2011
Submit one copy to appropriate
District Office
☐ AMENDED REPORT

RECEIVED
OCT 17 2019

WELL LOCATION AND ACREAGE DEDICATION PLAT

¹ API Number 30-025-46438	² Pool Code 97899	³ Pool Name WC-025 G-06 S253206M; BONE SPRING
⁴ Property Code 325131	⁵ Property Name CHINCOTEAGUE 8-5 FED COM	
⁶ OGRID No. 6137	⁷ Operator Name DEVON ENERGY PRODUCTION COMPANY, L.P.	⁸ Well Number 521H
		⁹ Elevation 3439.6

Surface Location

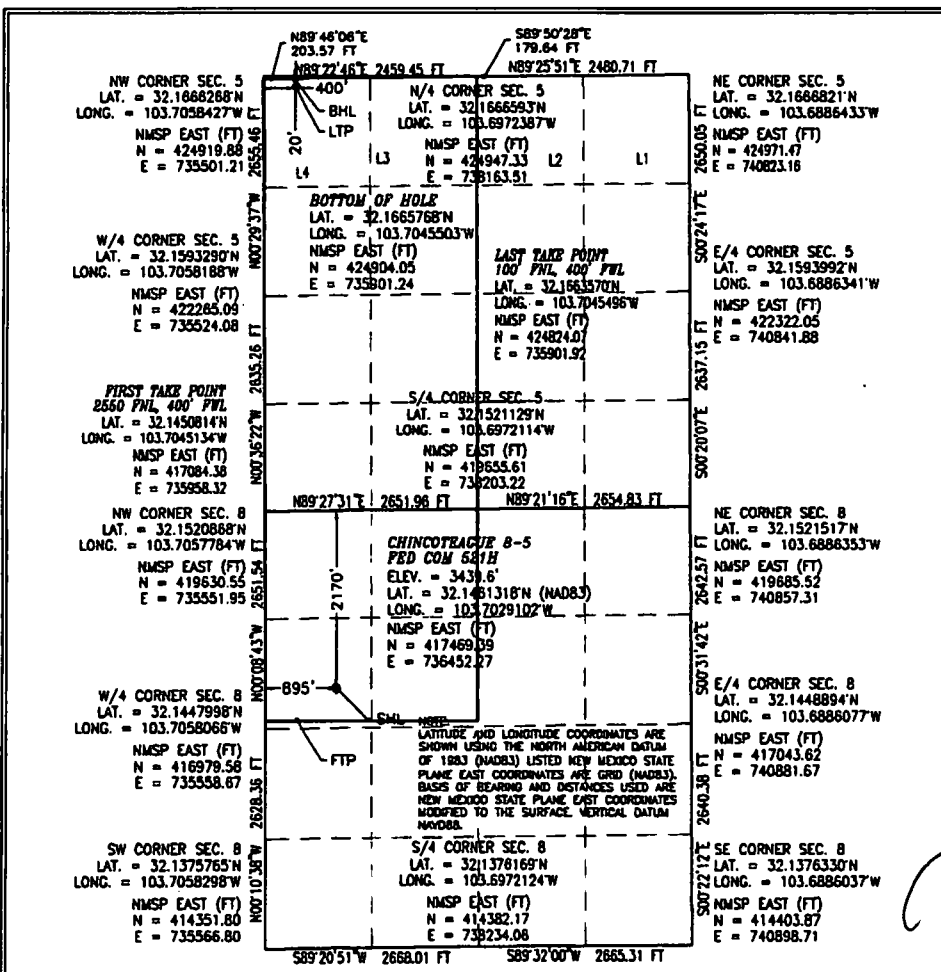
UL or lot no.	Section	Township	Range	Lot Idn	Feet from the	North/South line	Feet from the	East/West line	County
E	8	25 S	32 E		2170	NORTH	895	WEST	LEA

Bottom Hole Location If Different From Surface

UL or lot no.	Section	Township	Range	Lot Idn	Feet from the	North/South line	Feet from the	East/West line	County
D(4)	5	25 S	32 E		20	NORTH	400	WEST	LEA

¹⁰ Dedicated Acres 480 481.91	¹¹ Joint or Infill	¹² Consolidation Code	¹³ Order No.
--	-------------------------------	----------------------------------	-------------------------

No allowable will be assigned to this completion until all interests have been consolidated or a non-standard unit has been approved by the division.



OPERATOR CERTIFICATION

I hereby certify that the information contained herein is true and complete to the best of my knowledge and belief, and that this organization either owns a working interest or unleased mineral interest in the land including the proposed bottom hole location or has a right to drill this well at this location pursuant to a contract with an owner of such a mineral or working interest, or to a voluntary pooling agreement or a compulsory pooling order heretofore entered by the division.

Signature: *Jenny Harms* Date: **4-9-2019**

Printed Name: **Jenny Harms**

E-mail Address: **Jenny.harms@dvn.com**

SURVEYOR CERTIFICATION

I hereby certify that the well location shown on this plat was plotted from field notes of actual surveys made by me or under my supervision, and that the same is true and correct to the best of my belief.

MARCH 29, 2019
Date of Survey

Signature and Seal of Professional Surveyor:

Certificate Number: **PLIMON E. JARAMILLO, PLS 12797**

Survey No. **7013A**