

District I  
1625 N. French Dr., Hobbs, NM 88340  
Phone: (575) 393-6161 Fax: (575) 393-0720  
District II  
811 S. First St., Artesia, NM 88210  
Phone: (575) 748-1283 Fax: (575) 748-9720  
District III  
1000 Rio Brazos Road, Aztec, NM 87410  
Phone: (505) 334-6178 Fax: (505) 334-6170  
District IV  
1220 S. St. Francis Dr., Santa Fe, NM 87505  
Phone: (505) 476-3460 Fax: (505) 476-3462

State of New Mexico  
Energy, Minerals & Natural Resources Department  
OIL CONSERVATION DIVISION  
1220 South St. Francis Dr.  
Santa Fe, NM 87505

Form C-102  
Revised August 1, 2011  
Submit one copy to appropriate  
District Office  
☐ AMENDED REPORT

WELL LOCATION AND ACREAGE DEDICATION PLAT

30-025- <sup>1</sup> API Number <b>46546</b>	<sup>2</sup> Pool Code <b>53560</b>	<sup>3</sup> Pool Name <b>Salt Lake; Bone Spring</b>
<sup>4</sup> Property Code <b>726331</b>	<sup>5</sup> Property Name <b>BIG MOOSE FED COM</b>	<sup>6</sup> Well Number <b>404H</b>
<sup>7</sup> OGRID No. <b>325830</b>	<sup>8</sup> Operator Name <b>ASCENT ENERGY, LLC</b>	<sup>9</sup> Elevation <b>3764.0</b>

<sup>10</sup> Surface Location

UL or lot no.	Section	Township	Range	Lot Idn	Feet from the	North/South line	Feet from the	East/West line	County
M	1	21 S	32 E		263	SOUTH	805	WEST	LEA

<sup>11</sup> Bottom Hole Location If Different From Surface

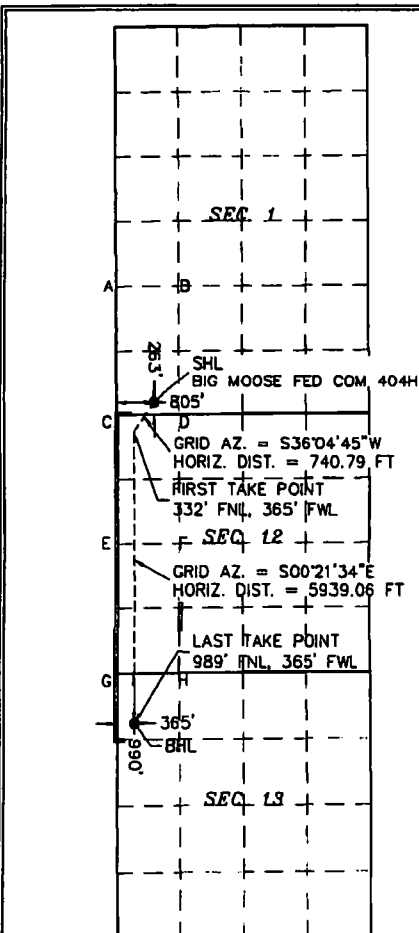
UL or lot no.	Section	Township	Range	Lot Idn	Feet from the	North/South line	Feet from the	East/West line	County
D	13	21 S	32 E		990	NORTH	365	WEST	LEA

<sup>12</sup> Dedicated Acres <b>200.00</b>	<sup>13</sup> Joint or Infill	<sup>14</sup> Consolidation Code <b>C</b>	<sup>15</sup> Order No. <b>HOBBS OCD</b>
--	-------------------------------	--	---

NOV 26 2019

No allowable will be assigned to this completion until all interests have been consolidated or a non-standard unit has been approved by the division.

RECEIVED



BIG MOOSE FED COM 404H E.L. = 3764.0'	
GEODETIC COORDINATES NAD 27 NMSP EAST SURFACE LOCATION N.=546782.80 E.=715682.78 LAT. = 32.5012717°N LONG. = 103.6338100°W	GEODETIC COORDINATES NAD 83 NMSP EAST SURFACE LOCATION N.=546844.45 E.=756844.23 LAT. = 32.5013944°N LONG. = 103.6343001°W
FIRST TAKE POINT NAD 27 NMSP EAST N.=546184.25 E.=715226.62 LAT. = 32.4996343°N LONG. = 103.6352374°W	FIRST TAKE POINT NAD 83 NMSP EAST N.=546245.88 E.=756408.09 LAT. = 32.4997571°N LONG. = 103.6357275°W
LAST TAKE POINT NAD 27 NMSP EAST N.=540248.73 E.=715263.71 LAT. = 32.4833134°N LONG. = 103.6352431°W	LAST TAKE POINT NAD 83 NMSP EAST N.=540308.20 E.=756445.33 LAT. = 32.4834361°N LONG. = 103.6357326°W
BOTTOM OF HOLE NAD 27 NMSP EAST N.=540245.82 E.=715263.71 LAT. = 32.4833108°N LONG. = 103.6352431°W	BOTTOM OF HOLE NAD 83 NMSP EAST N.=540307.28 E.=756445.33 LAT. = 32.4834336°N LONG. = 103.6357326°W
CORNER COORDINATES TABLE NAD 27 NMSP EAST	
A - N.=549153.09, E.=714842.37 B - N.=549164.18, E.=716157.28 C - N.=546513.07, E.=714859.87 D - N.=546524.04, E.=716174.53 E - N.=543872.49, E.=714875.80 F - N.=543882.78, E.=716191.54 G - N.=541232.35, E.=714892.59 H - N.=541242.69, E.=716208.53	
CORNER COORDINATES TABLE NAD 83 NMSP EAST	
A - N.=549214.81, E.=756023.75 B - N.=549225.90, E.=757338.68 C - N.=546574.71, E.=756041.12 D - N.=546585.68, E.=757356.00 E - N.=543934.05, E.=756057.32 F - N.=543944.35, E.=757373.07 G - N.=541293.84, E.=756074.18 H - N.=541304.18, E.=757390.13	

<sup>16</sup> OPERATOR CERTIFICATION

I hereby certify that the information contained herein is true and complete to the best of my knowledge and belief, and that this organization either owns a working interest or unleased mineral interest in the land including the proposed bottom hole location or has a right to drill this well at this location pursuant to a contract with an owner of such a mineral or working interest, or to a voluntary pooling agreement or a compulsory pooling order heretofore entered by the division.

Signature: *Brian Wood* Date: 5-5-18

Printed Name: Brian Wood

E-mail Address: brian@permitswest.com

Phone Number: (505) 466-8120

<sup>17</sup> SURVEYOR CERTIFICATION

I hereby certify that the well location shown on this plat was plotted from field notes of actual surveys made by me or under my supervision, and that the same is true and correct to the best of my belief.

Signature and Seal of Professional Surveyor: *MONTE F. JARAMILLO*  
Date of Survey: APRIL 27, 2019

Certificate Number: 12797

Survey No. 6003B