

DISTRICT I
1625 N. French Dr., Hobbs, NM 88240
Phone: (575) 393-6161 Fax: (575) 393-0720

DISTRICT II
811 S. First St., Artesia, NM 88210
Phone: (575) 748-1283 Fax: (575) 748-9720

DISTRICT III
1000 Rio Brazos Road, Aztec, NM 87410
Phone: (505) 334-6178 Fax: (505) 334-6170

DISTRICT IV
1220 S. St. Francis Dr., Santa Fe, NM 87505
Phone: (505) 476-3460 Fax: (505) 476-3462

State of New Mexico
Energy, Minerals & Natural Resources Department
OIL CONSERVATION DIVISION
1220 South St. Francis Dr.
Santa Fe, New Mexico 87505

Form C-102
Revised August 1, 2011
Submit one copy to appropriate District Office
BEM/4/15
AMENDED REPORT

DEC 18 2019
RECEIVED
HOBBS OCD

WELL LOCATION AND ACREAGE DEDICATION

| | | |
|-----------------------------------|--|---|
| API Number 30-025-46631 | Pool Code 98264 | Well Name BELL LAKE; BONE SPRING, SOUTH |
| Property Code 316706 | Property Name BELL LAKE UNIT SOUTH | Well Number 205H |
| OGRID No. 12361 | Operator Name KAISER-FRANCIS OIL COMPANY | Elevation 3631' |

Surface Location

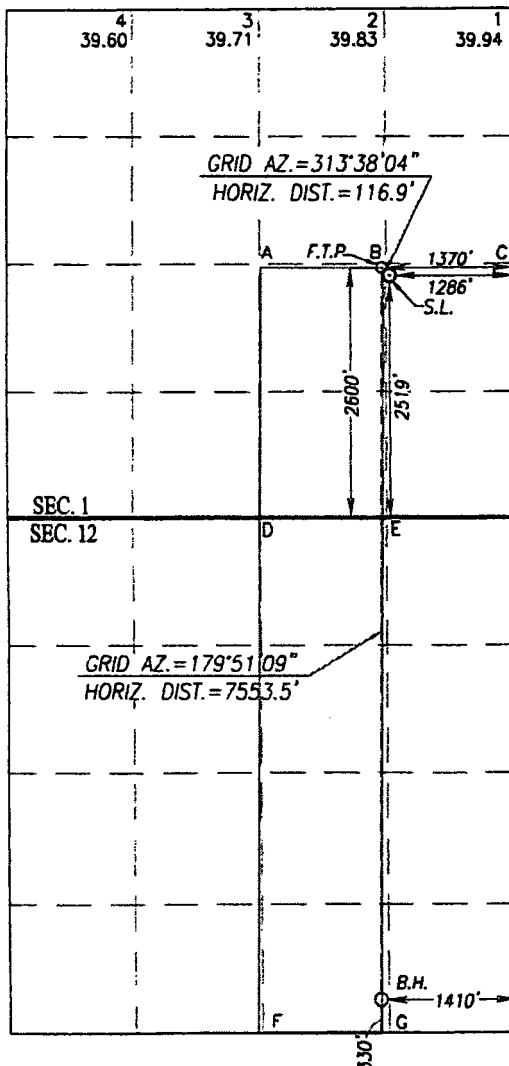
| UL or lot No. | Section | Township | Range | Lot Idn | Feet from the | North/South line | Feet from the | East/West line | County |
|---------------|---------|----------|-------|---------|---------------|------------------|---------------|----------------|--------|
| I | 1 | 24-S | 33-E | | 2519 | SOUTH | 1286 | EAST | LEA |

Bottom Hole Location If Different From Surface

| UL or lot No. | Section | Township | Range | Lot Idn | Feet from the | North/South line | Feet from the | East/West line | County |
|---------------|---------|----------|-------|---------|---------------|------------------|---------------|----------------|--------|
| O | 12 | 24-S | 33-E | | 330 | SOUTH | 1410 | EAST | LEA |

| | | | |
|-------------------------------|-----------------|--------------------|-----------------------------|
| Dedicated Acres 480 | Joint or Infill | Consolidation Code | Order No. R-14600 |
|-------------------------------|-----------------|--------------------|-----------------------------|

NO ALLOWABLE WILL BE ASSIGNED TO THIS COMPLETION UNTIL ALL INTERESTS HAVE BEEN CONSOLIDATED OR A NON-STANDARD UNIT HAS BEEN APPROVED BY THE DIVISION



SCALE: 1"=2000'

| GEODETIC COORDINATES | GEODETIC COORDINATES |
|----------------------|----------------------|
| NAD 83 NME | NAD 27 NME |
| SURFACE LOCATION | SURFACE LOCATION |
| Y= 454275.7 N | Y= 454216.7 N |
| X= 792269.0 E | X= 751085.1 E |
| LAT.=32.246272° N | LAT.=32.246149° N |
| LONG.=103.521681° W | LONG.=103.521202° W |
| FIRST TAKE POINT | FIRST TAKE POINT |
| NAD 83 NME | NAD 27 NME |
| Y= 454356.4 N | Y= 454297.4 N |
| X= 792184.4 E | X= 751000.5 E |
| LAT.=32.246496° N | LAT.=32.246372° N |
| LONG.=103.521952° W | LONG.=103.521474° W |

CORNER COORDINATES TABLE

| NAD 27 NME |
|----------------------------------|
| A - Y= 454332.2 N, X= 749727.5 E |
| B - Y= 454336.7 N, X= 751048.7 E |
| C - Y= 454341.3 N, X= 752369.9 E |
| D - Y= 451693.5 N, X= 749744.3 E |
| E - Y= 451698.2 N, X= 751067.3 E |
| F - Y= 446409.2 N, X= 749789.4 E |
| G - Y= 446416.0 N, X= 751110.7 E |

CORNER COORDINATES TABLE

| NAD 83 NME |
|----------------------------------|
| A - Y= 454391.2 N, X= 790911.4 E |
| B - Y= 454395.7 N, X= 792232.6 E |
| C - Y= 454400.3 N, X= 793553.8 E |
| D - Y= 451752.4 N, X= 790928.3 E |
| E - Y= 451757.1 N, X= 792251.3 E |
| F - Y= 446468.0 N, X= 790973.7 E |
| G - Y= 446474.8 N, X= 792294.9 E |

| BOTTOM HOLE LOCATION | BOTTOM HOLE LOCATION |
|----------------------|----------------------|
| NAD 83 NME | NAD 27 NME |
| Y= 446804.3 N | Y= 446745.5 N |
| X= 792203.8 E | X= 751019.6 E |
| LAT.=32.225738° N | LAT.=32.225614° N |
| LONG.=103.522074° W | LONG.=103.521597° W |

OPERATOR CERTIFICATION

I hereby certify that the information herein is true and complete to the best of my knowledge and belief, and that this organization either owns a working interest or unleased mineral interest in the land including the proposed bottom hole location or has a right to drill this well at this location pursuant to a contract with an owner of such mineral or working interest, or to a voluntary pooling agreement or a compulsory pooling order heretofore entered by the division.

Melanie J. Wilson 04/25/2019
Signature Date

Melanie J Wilson

Printed Name

mjp1692@gmail.com

E-mail Address

SURVEYOR CERTIFICATION

I hereby certify that the well location shown on this plat was plotted from field notes of actual surveys made by me or under my supervision, and that the same is true and correct to the best of my belief.

SEPTEMBER 30, 2017

Date of Survey
Signature of Professional Surveyor:

NEW MEXICO
REGISTERED SURVEYOR
3239
Gary G. Eidson 12641
Ronald J. Eidson 3239
ACK REL. W.O.: 17110649 JWSC W.O.: 17.11.0948