

District I
1625 N. French Dr., Hobbs, NM 88240
Phone: (575) 393-6161 Fax: (575) 393-0720
District II
811 S. First St., Artesia, NM 88210
Phone: (575) 748-1283 Fax: (575) 748-9720
District III
1000 Rio Brazos Road, Artesia, NM 87410
Phone: (505) 334-6178 Fax: (505) 334-6170
District IV
1220 S. St. Francis Dr., Santa Fe, NM 87505
Phone: (505) 476-3460 Fax: (505) 476-3462

State of New Mexico
Energy, Minerals & Natural Resources Department
OIL CONSERVATION DIVISION
1220 South St. Francis Dr.
Santa Fe, NM 87505

Form C-102
Revised August 1, 2011
Submit one copy to appropriate
District Office
☐ AMENDED REPORT

WELL LOCATION AND ACREAGE DEDICATION PLAT

¹ API Number 30-025-4664	² Pool Code 53560	³ Pool Name SALT LAKE Wildcat, Bone Spring
⁴ Property Code 726489	⁵ Property Name BIG EDDY UNIT DI 29 BS2-5W	⁶ Well Number 368H
⁷ OGRID No. 260737	⁸ Operator Name XTO PERMIAN OPERATING, LLC.	⁹ Elevation 3,513'

¹⁰ Surface Location

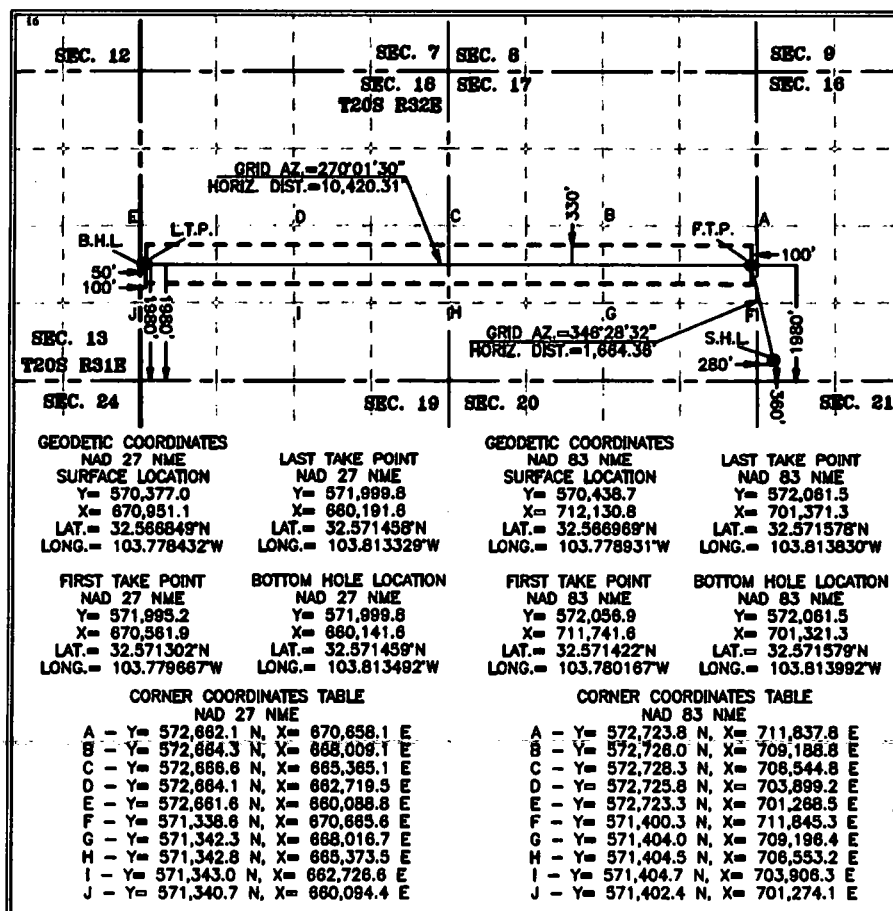
UL or lot no.	Section	Township	Range	Lot Idn	Feet from the	North/South line	Feet from the	East/West line	County
M	16	20 S	32 E		360	SOUTH	280	WEST	LEA

¹¹ Bottom Hole Location If Different From Surface

UL or lot no.	Section	Township	Range	Lot Idn	Feet from the	North/South line	Feet from the	East/West line	County
3	18	20 S	32 E		1,980	SOUTH	50	WEST	LEA

¹² Dedication Acres 320 319.51	¹³ Joint or Infill	¹⁴ Consolidation Code	¹⁵ Order No.
--	-------------------------------	----------------------------------	-------------------------

No allowable will be assigned to this completion until all interests have been consolidated or a non-standard unit has been approved by the division.



17 OPERATOR CERTIFICATION

I hereby certify that the information contained herein is true and complete to the best of my knowledge and belief, and that this organization either owns a working interest or unleased mineral interest in the land including the proposed bottom hole location or has a right to drill this well at this location pursuant to a contract with an owner of such a mineral or working interest, or to a voluntary pooling agreement or a compulsory pooling order heretofore entered by the division.

Stephanie Rabadue 11/19/2018
Signature Date

Stephanie Rabadue
Printed Name

stephanie_rabadue@xtoenergy.com
E-mail Address

18 SURVEYOR CERTIFICATION

I hereby certify that the well location shown on this plat was plotted from field notes of actual surveys made by me or under my supervision, and that the same is true and correct to the best of my belief.

11-19-2018
Date of Survey

Signature and Seal of
Professional Surveyor:

MARK DILLON HARP 23786
Certificate Number



AI 2018061616

Intent ☒ As Drilled ☐

API #

Operator Name:
XTO PERMIAN OPERATING, LLC

Property Name:
BIG EDDY UNIT DI 29 BS2-5W

Well Number
368H

Kick Off Point (KOP)

UL	Section	Township	Range	Lot	Feet	From N/S	Feet	From E/W	County
M	16	20S	32E		360	SOUTH	280	WEST	LEA
Latitude					Longitude				NAD
32.566969					-103.778931				83

First Take Point (FTP)

UL	Section	Township	Range	Lot	Feet	From N/S	Feet	From E/W	County
I	17	20S	32E		1980	South	100	EAST	LEA
Latitude					Longitude				NAD
32.571422					-103.780167				83

Last Take Point (LTP)

UL	Section	Township	Range	Lot	Feet	From N/S	Feet	From E/W	County
	18	20S	32E	3	1980	South	100	WEST	LEA
Latitude					Longitude				NAD
32.5471578					-103.813830				83

Is this well the defining well for the Horizontal Spacing Unit? ☐

Is this well an infill well? ☒

If infill is yes please provide API if available, Operator Name and well number for Defining well for Horizontal Spacing Unit.

API #

30-025-46541

Operator Name:
XTO PERMIAN OPERATING, LLC

Property Name:
Big Eddy Unit DI 29

Well Number
365H

KZ 06/29/2018