

District I
1625 N. French Dr., Hobbs, NM 88240
Phone: (575) 393-6161 Fax: (575) 393-0720
District II
811 S. First St., Artesia, NM 88210
Phone: (575) 748-1283 Fax: (575) 748-9720
District III
1000 Rio Brazos Road, Aztec, NM 87410
Phone: (505) 334-6178 Fax: (505) 334-6170
District IV
1220 S. St. Francis Dr., Santa Fe, NM 87505
Phone: (505) 476-3460 Fax: (505) 476-3462

State of New Mexico
Energy, Minerals & Natural Resources
Department
OIL CONSERVATION DIVISION
1220 South St. Francis Dr.
Santa Fe, NM 87505

FORM C-102

Revised August 1, 2011

Submit one copy to appropriate

District Office

☐ AMENDED REPORT

WELL LOCATION AND ACREAGE DEDICATION PLAT

| | | | | | |
|--|--|--|--|--|--|
| ¹ API Number 30-025-46713 | | ² Pool Code 97903-78820 | | ³ Pool Name WC-025 G-08 S253235G; Lwr Bone Spring | |
| ⁴ Property Code 326336 | | ⁵ Property Name ICY 18 FED | | | ⁶ Well Number #722H |
| ⁷ GRID No. 7377 | | ⁸ Operator Name EOG RESOURCES, INC. | | | ⁹ Elevation 3488' |

¹⁰Surface Location

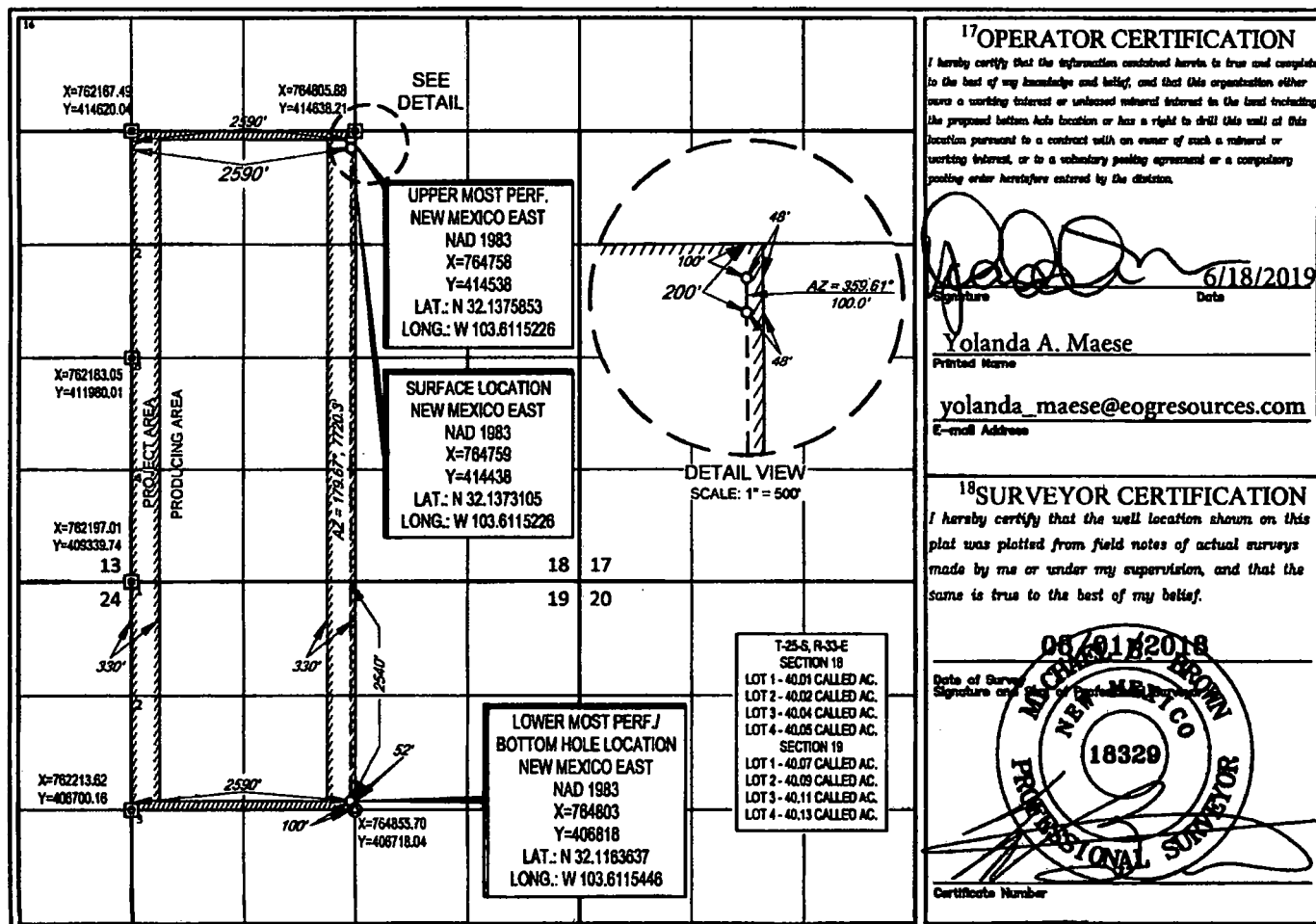
| UL or lot no. | Section | Township | Range | Lot Idn | Feet from the | North/South line | Feet from the | East/West line | County |
|---------------|-----------|-------------|-------------|----------|---------------|------------------|---------------|----------------|------------|
| C | 18 | 25-S | 33-E | - | 200' | NORTH | 2590' | WEST | LEA |

¹¹Bottom Hole Location If Different From Surface

| UL or lot no. | Section | Township | Range | Lot Idn | Feet from the | North/South line | Feet from the | East/West line | County |
|---------------|-----------|-------------|-------------|----------|---------------|------------------|---------------|----------------|------------|
| F | 19 | 25-S | 33-E | - | 2540' | NORTH | 2590' | WEST | LEA |

| | | | |
|--|-------------------------------|----------------------------------|-------------------------|
| ¹² Dedicated Acres 480.28 | ¹³ Joint or Infill | ¹⁴ Consolidation Code | ¹⁵ Order No. |
|--|-------------------------------|----------------------------------|-------------------------|

No allowable will be assigned to this completion until all interests have been consolidated or a non-standard unit has been approved by the division.



Intent ☒ As Drilled ☐

API #

30-025-

| | | |
|---------------------|----------------|-------------|
| Operator Name: | Property Name: | Well Number |
| EOG Resources. Inc. | ICY 18 FED | 722H |

Kick Off Point (KOP)

| | | | | | | | | | |
|------------|---------|----------|-------|-----|--------------|----------|------|----------|--------|
| UL | Section | Township | Range | Lot | Feet | From N/S | Feet | From E/W | County |
| C | 18 | 25S | 33E | | 200 | N | 2590 | W | LEA |
| Latitude | | | | | Longitude | | | | NAD |
| 32.1373105 | | | | | -103.6115226 | | | | 83 |

First Take Point (FTP)

| | | | | | | | | | |
|------------|---------|----------|-------|-----|--------------|----------|------|----------|--------|
| UL | Section | Township | Range | Lot | Feet | From N/S | Feet | From E/W | County |
| C | 18 | 25S | 33E | | 100 | N | 2590 | W | LEA |
| Latitude | | | | | Longitude | | | | NAD |
| 32.1375853 | | | | | -103.6115226 | | | | 83 |

Last Take Point (LTP)

| | | | | | | | | | |
|------------|---------|----------|-------|-----|--------------|----------|------|----------|--------|
| UL | Section | Township | Range | Lot | Feet | From N/S | Feet | From E/W | County |
| F | 19 | 25S | 33E | | 2540 | N | 2590 | W | LEA |
| Latitude | | | | | Longitude | | | | NAD |
| 32.1163637 | | | | | -103.6115446 | | | | 83 |

Is this well the defining well for the Horizontal Spacing Unit?

☐ NO

Is this well an infill well?

☐ YES

If infill is yes please provide API if available, Operator Name and well number for Defining well for Horizontal Spacing Unit.

API #

30-025-

| | | |
|---------------------|----------------|-------------|
| Operator Name: | Property Name: | Well Number |
| EOG RESOURCES, INC. | ICY 18 FED | 721H |

KZ 06/29/2018