

HOBBS OCD

DEC 28 2011
RECEIVED

DISTRICT I

1625 N. FRENCH DR., HOBBS, NM 88240
Phone: (505) 885-6181 Fax: (505) 885-6182

DISTRICT II

811 E. FIRST ST., ARTESIA, NM 88203
Phone: (505) 746-1283 Fax: (505) 746-0763

DISTRICT III

1000 RIO BRAZOS RD., ARTEC, NM 87410
Phone: (505) 884-0178 Fax: (505) 884-0170

DISTRICT IV

1220 S. ST. FRANCIS DR., SANTA FE, NM 87505
Phone: (505) 476-3460 Fax: (505) 476-3463

State of New Mexico
Energy, Minerals & Natural Resources Department
CONSERVATION DIVISION
1220 SOUTH ST. FRANCIS DR.
Santa Fe, New Mexico 87505

Form C-102
Revised August 1, 2011
Submit one copy to appropriate
District Office

☒ AMENDED REPORT

WELL LOCATION AND ACREAGE DEDICATION PLAT

API Number 30-025-45736		Pool Code 98117	Pool Name WC-025 G-09 S263504N;WOLFCAMP
Property Code 325736	Property Name ARENA ROJA FED UNIT 15-10		Well Number 4H
OGRID No. 6137	Operator Name DEVON ENERGY PRODUCTION COMPANY, L.P.		Elevation 3085.8'

Surface Location

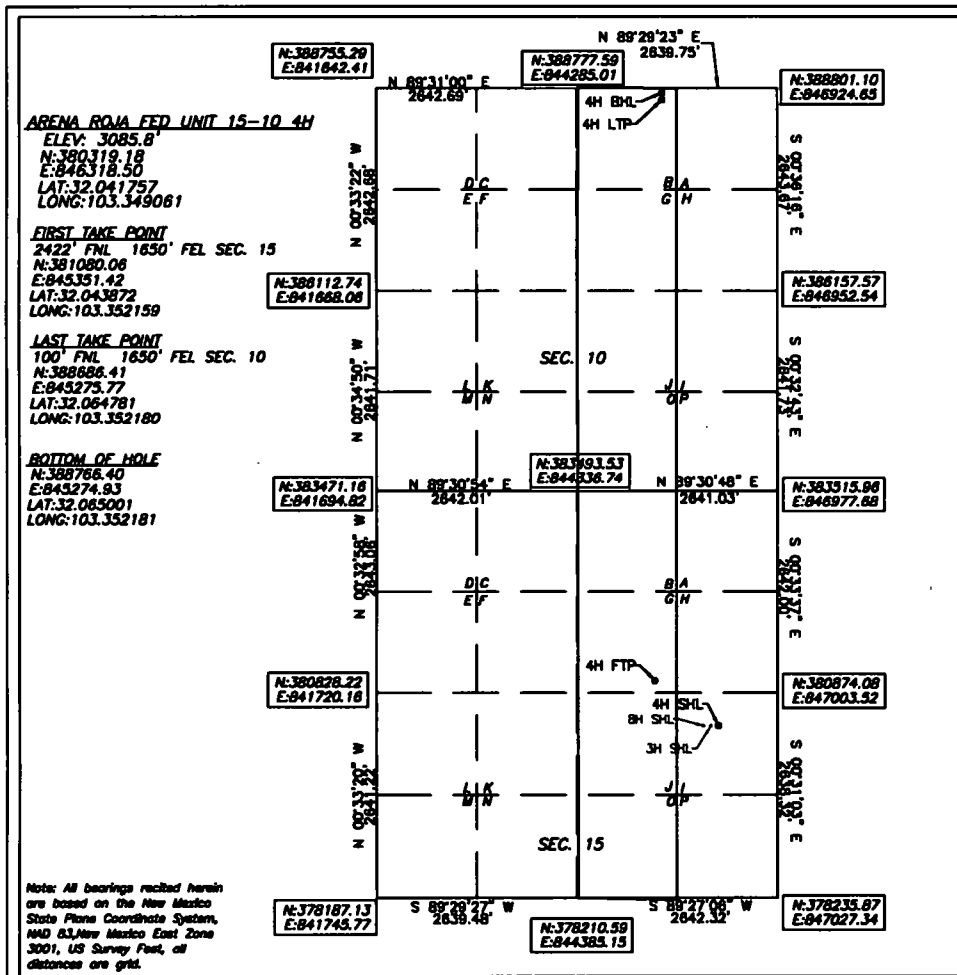
UL or lot No.	Section	Township	Range	Lot Idn	Feet from the	North/South line	Feet from the	East/West line	County
I	15	26-S	35-E		2090	SOUTH	690	EAST	LEA

Bottom Hole Location If Different From Surface

UL or lot No.	Section	Township	Range	Lot Idn	Feet from the	North/South line	Feet from the	East/West line	County
B	10	26-S	35-E		51	NORTH	1452	EAST	LEA

Dedicated Acres	Joint or Infill	Consolidation Code	Order No.
240			

NO ALLOWABLE WILL BE ASSIGNED TO THIS COMPLETION UNTIL ALL INTERESTS HAVE BEEN CONSOLIDATED OR A NON-STANDARD UNIT HAS BEEN APPROVED BY THE DIVISION



OPERATOR CERTIFICATION

I hereby certify that the information herein is true and complete to the best of my knowledge and belief, and that this organization either owns a working interest or unleased mineral interest in the land including the proposed bottom hole location or has a right to drill this well at this location pursuant to a contract with an owner of such mineral or working interest, or to a voluntary pooling agreement or a compulsory pooling order heretofore entered by the division.

Signature: Rebecca Deal Date: 12/19/2019
Signature
Rebecca Deal, Regulatory Analyst
Printed Name
rebecca.deal@dvn.com
E-mail Address

SURVEYOR CERTIFICATION

I hereby certify that the well location shown on this plat was plotted from field notes of actual surveys made by me or under my supervision, and that the same is true and correct to the best of my belief.

8/2018

Date of Survey

Signature & Seal of Professional Surveyor



10/09/19

Certificate No. 22404 B.L. LAMAN
W.O. # DRAWN BY: CM

Note: All bearings recited herein are based on the New Mexico State Plane Coordinate System, NAD 83, New Mexico East Zone 3001, US Survey Feet, all distances are grid.