

District I  
1625 N. French Dr., Hobbs, NM 88240  
Phone: (575) 393-6161 Fax: (575) 393-0720  
District II  
811 S. First St., Artesia, NM 88210  
Phone: (575) 748-1283 Fax: (575) 748-9720  
District III  
1000 Rio Brazos Road, Artec, NM 87410  
Phone: (505) 334-6178 Fax: (505) 334-6170  
District IV  
1220 S. St. Francis Dr., Santa Fe, NM 87505  
Phone: (505) 476-3460 Fax: (505) 476-3462

State of New Mexico  
Energy, Minerals & Natural Resources Department  
OIL CONSERVATION DIVISION  
1220 South St. Francis  
Santa Fe, NM 87505

Form C-102  
Revised August 1, 2011  
Submit one copy to appropriate  
District Office  
☒ AMENDED REPORT

WELL LOCATION AND ACREAGE DEDICATION PLAT

API Number 30-025-45701		Pool Code 97899	Pool Name WC-025 G-06 S253206M; BONE SPRING
Property Code	Property Name CHINCOTEAGUE 8-5 FED COM		Well Number 233H
GRID No. 6137	Operator Name DEVON ENERGY PRODUCTION COMPANY, L.P.		Elevation 3438.6

Surface Location

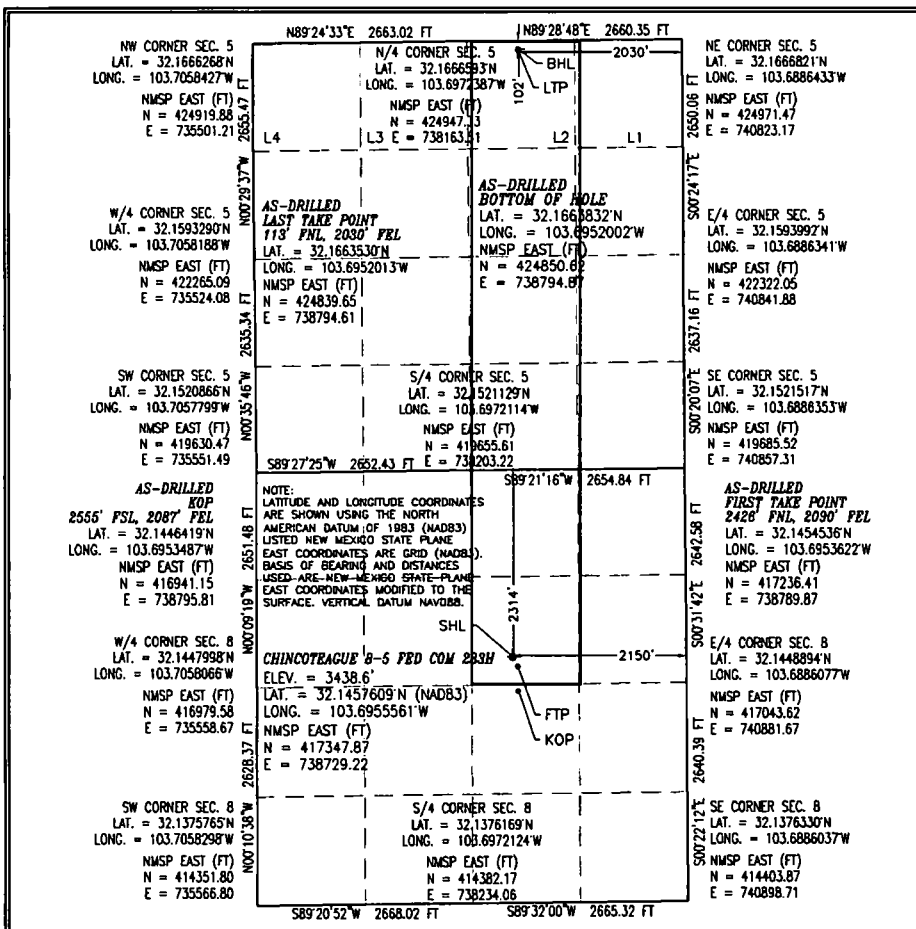
UL or lot no.	Section	Township	Range	Lot Idn	Feet from the	North/South line	Feet from the	East/West line	County
G	8	25 S	32 E		2314	NORTH	2150	EAST	LEA

Bottom Hole Location If Different From Surface

UL or lot no.	Section	Township	Range	Lot Idn	Feet from the	North/South line	Feet from the	East/West line	County
2	5	25 S	32 E		102	NORTH	2030	EAST	LEA

Dedicated Acres 240	Joint or Infill	Consolidation Code	Order No.
------------------------	-----------------	--------------------	-----------

No allowable will be assigned to this completion until all interests have been consolidated or a non-standard unit has been approved by the division.



OPERATOR CERTIFICATION

I hereby certify that the information contained herein is true and complete to the best of my knowledge and belief, and that this organization either owns a working interest or unleased mineral interest in the land including the proposed bottom hole location or has a right to drill this well at this location pursuant to a contract with an owner of such a mineral or working interest, or to a voluntary pooling agreement or a compulsory pooling order heretofore entered by the division.

Signature: *Jenny Harms* Date: 12-30-2019

JENNY HARMS

Printed Name

JENNY.HARMS@DVN.COM

E-mail Address

SURVEYOR CERTIFICATION

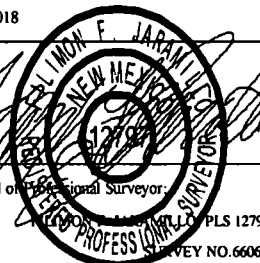
I hereby certify that the well location shown on this plat was plotted from field notes of actual surveys made by me or under my supervision, and that the same is true and correct to the best of my belief.

OCTOBER 16, 2018

Date of Survey

Signature and Seal of Professional Surveyor:

Certificate Number:



Intent ☐ As Drilled ☒

API #  
30-025-45701

Operator Name:

DEVON ENERGY PRODUCTION CO., L.P.

Property Name:

CHINCOTEAGUE 8-5 FED COM

Well Number

233H

Kick Off Point (KOP)

UL J	Section 8	Township 25S	Range 32E	Lot	Feet 2555	From N/S SOUTH	Feet 2087	From E/W EAST	County LEA
Latitude 32.1446419					Longitude 103.6953487			NAD	83

First Take Point (FTP)

UL G	Section 8	Township 25S	Range 32E	Lot	Feet 2426	From N/S NORTH	Feet 2090	From E/W EAST	County LEA
Latitude 32.1454536					Longitude 103.6953622			NAD	83

Last Take Point (LTP)

UL	Section 5	Township 25S	Range 32E	Lot 2	Feet 113	From N/S NORTH	Feet 2030	From E/W EAST	County LEA
Latitude 32.1663530					Longitude 103.6952013			NAD	83

Is this well the defining well for the Horizontal Spacing Unit? ☒

Is this well an infill well? ☐

If infill is yes please provide API if available, Operator Name and well number for Defining well for Horizontal Spacing Unit.

API #

Operator Name:

Property Name:

Well Number

KZ 06/29/2018