

DISTRICT I
1625 N. FRENCH DR., HOHES, NM 88240
Phone: (505) 893-6181 Fax: (505) 893-0720

DISTRICT II
811 S. FIRST ST., ARTESIA, NM 88210
Phone: (505) 748-1223 Fax: (505) 748-0720

DISTRICT III
1000 RIO BRAZOS RD., AZTEC, NM 87410
Phone: (505) 834-6178 Fax: (505) 834-6170

DISTRICT IV
1250 S. ST. FRANCIS DR., SANTA FE, NM 87505
Phone: (505) 476-3460 Fax: (505) 476-3468

State of New Mexico
Energy, Minerals & Natural Resources Department
OIL CONSERVATION DIVISION
1220 SOUTH ST. FRANCIS DR.
Santa Fe, New Mexico 87505

RECEIVED
JAN 29 2020
HOBBS OGD

Form C-102
Revised August 1, 2011
Submit one copy to appropriate
District Office

☐ AMENDED REPORT

WELL LOCATION AND ACREAGE DEDICATION PLAT

API Number 30-025-46811	Pool Code 98117	Pool Name WC-025 G-09 S263504N;WOLFCAMP
Property Code 327071	Property Name TALCO 16-21 STATE FED COM	Well Number 001H
OGHD No. 6137	Operator Name DEVON ENERGY PRODUCTION COMPANY, L.P.	Elevation 3201.4'

Surface Location

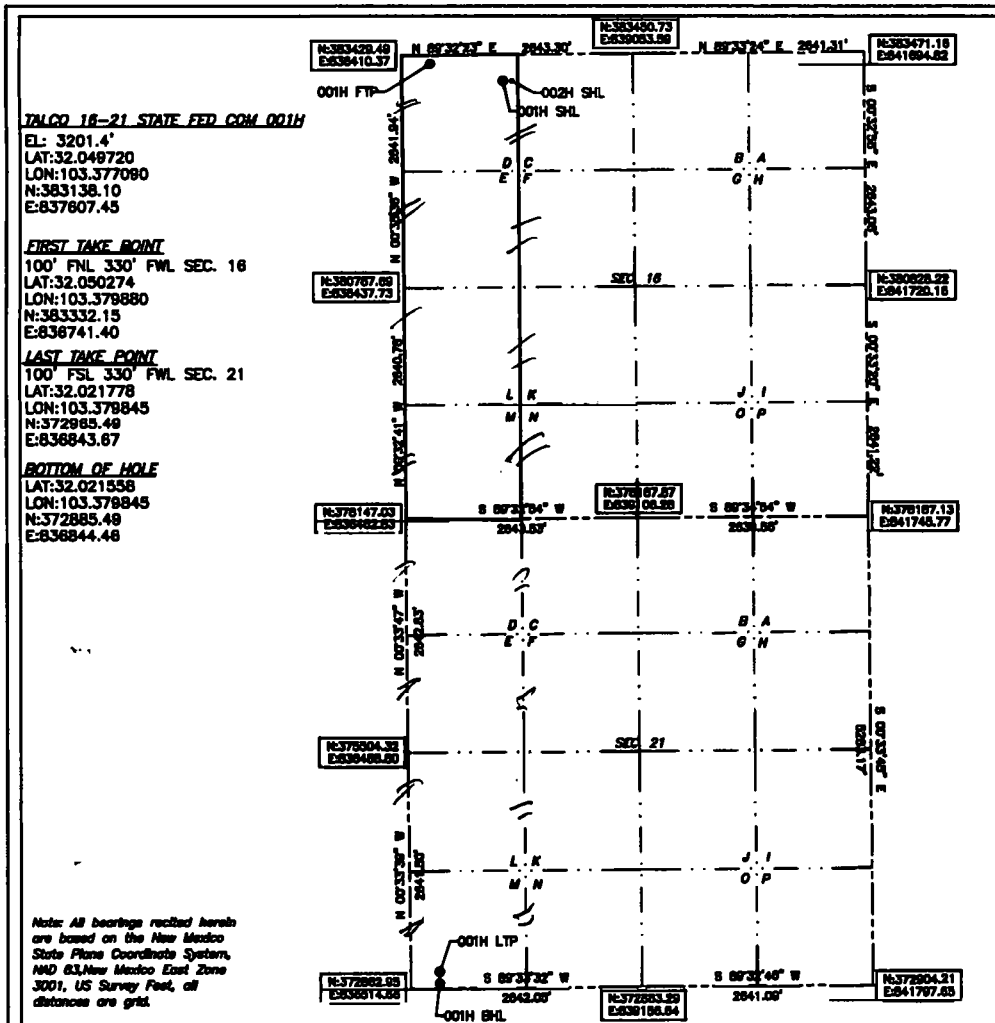
UL or lot No.	Section	Township	Range	Lot Idn	Feet from the	North/South line	Feet from the	East/West line	County
D	16	26-S	35-E		301	NORTH	1194	WEST	LEA

Bottom Hole Location If Different From Surface

UL or lot No.	Section	Township	Range	Lot Idn	Feet from the	North/South line	Feet from the	East/West line	County
M	21	26-S	35-E		20	SOUTH	330	WEST	LEA

Dedicated Acres	Joint or Infill	Consolidation Code	Order No.
160.320			

NO ALLOWABLE WILL BE ASSIGNED TO THIS COMPLETION UNTIL ALL INTERESTS HAVE BEEN CONSOLIDATED OR A NON-STANDARD UNIT HAS BEEN APPROVED BY THE DIVISION



OPERATOR CERTIFICATION

I hereby certify that the information herein is true and complete to the best of my knowledge and belief, and that this organization either owns a working interest or unleased mineral interest in the land including the proposed bottom hole location or has a right to drill this well at this location pursuant to a contract with an owner of such mineral or working interest, or to a voluntary pooling agreement or a compulsory pooling order heretofore entered by the division.

Rebecca Deal 8/15/2019
Signature Date
Rebecca Deal, Regulatory Analyst
Printed Name
rebecca.deal@dvn.com
E-mail Address

SURVEYOR CERTIFICATION

I hereby certify that the well location shown on this plat was plotted from field notes of actual surveys made by me or under my supervision, and that the same is true and correct to the best of my belief.

06/2019

Date of Survey

Signature & Seal of Professional Surveyor



06/19/19

Certificate No. 22404 B.L. LAMAN

DRAWN BY: CM

Intent ☒ As Drilled ☐

API # 30-024-46811			
Operator Name: DEVON ENERGY PRODUCTION COMPANY, LP.		Property Name: TALCO 16-21 STATE FED COM	Well Number 001H

Kick Off Point (KOP)

UL	Section 16	Township 26S	Range 35E	Lot	Feet 50	From N/S FNL	Feet 330	From E/W FWK	County LEA
Latitude 32.050431					Longitude -103.379872				NAD 83

First Take Point (FTP)

UL D	Section 16	Township 26-S	Range 35-E	Lot	Feet 100	From N/S NORTH	Feet 330	From E/W WEST	County LEA
Latitude 32.050274					Longitude 103.379880				NAD 83

Last Take Point (LTP)

UL M	Section 21	Township 26-S	Range 35-E	Lot	Feet 100	From N/S SOUTH	Feet 330	From E/W WEST	County LEA
Latitude 32.021778					Longitude 103.379845				NAD 83

Is this well the defining well for the Horizontal Spacing Unit? ☒

Is this well an infill well? ☐

If infill is yes please provide API if available, Operator Name and well number for Defining well for Horizontal Spacing Unit.

API #		
Operator Name:	Property Name:	Well Number

KZ 06/29/2018