

DISTRICT IV
1220 S. ST. FRANCIS DR., SANTA FE, NM 87505
Phone: (505) 476-3460 Fax: (505) 476-3462

Department
SION
HOBBS **OCD**
Submit on
200

Form C-102
Revised August 1, 2011
one copy to appropriate
District Office

FEB 03 2020

RECEIVED **RECOMMENDED REPORT**

WELL LOCATION AND ACREAGE DEDICATION PER

API Number 30-025-46835	Pool Code 98309	Pool Name WC-025 G-08 S243213C;WOLFCAMP
Property Code ✓ 39911	Property Name BELL LAKE 24 FED	Well Number 015H
OGRID No. 6137	Operator Name DEVON ENERGY PRODUCTION COMPANY, L.P.	Elevation 3575.7'

Surface Location

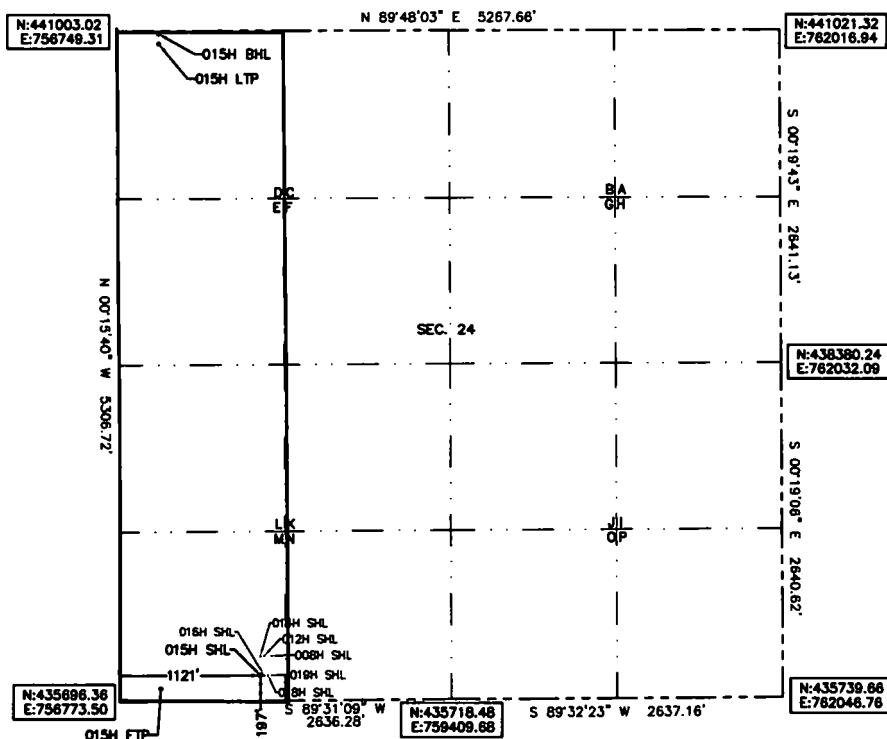
UL or lot No.	Section	Township	Range	Lot Idn	Feet from the	North/South line	Feet from the	East/West line	County
M	24	24-S	32-E		197	SOUTH	1121	WEST	LEA

Bottom Hole Location If Different From Surface

UL or lot No.	Section	Township	Range	Lot Idn	Feet from the	North/South line	Feet from the	East/West line	County
D	24	24-S	32-E		20	NORTH	330	WEST	LEA

Dedicated Acres	Joint or Infill	Consolidation Code	Order No.
160			

**NO ALLOWABLE WILL BE ASSIGNED TO THIS COMPLETION UNTIL ALL INTERESTS HAVE BEEN CONSOLIDATED
OR A NON-STANDARD UNIT HAS BEEN APPROVED BY THE DIVISION**



Note: All bearings recited herein are based on the New Mexico State Plane Coordinate System, NAD 83, New Mexico East Zone 3001, US Survey Feet, all distances are grid.

BELL LAKE 24 FEB 015H
ELEV: 3575.7
LAT: 32.196438
LON: -103.633249
N: 435902.76
E: 757893.57

FIRST TAKE POINT
100' FSL J30' FWL
LAT: 32.196165
LON: -103.635807
N: 435799.13
E: 757103.03

BOTTOM OF HOLE
20' FNL 330' FNL
LAT:32.210418
LON:-103.635773
N:440984.17
E:757079.40

LAST TAKE POINT
100' FNL 330' FNL
LAT: 32.210188
LON: -103.635775
N: 440904.17
E: 757079.77

OPERATOR CERTIFICATION

I hereby certify that the information herein is true and complete to the best of my knowledge and belief, and that this organization is not in a working interest or an unleased mineral interest in, including the proposed bottom hole location or has a right to drill this well at this location pursuant to a contract with an owner of such mineral or working interest, or to a voluntary pooling agreement or a compulsory pooling order heretofore entered by the division.

Rebecca Deal 6/17/2019
Signature Date

Rebecca Deal, Regulatory Analyst

rebecca.deal@dvn.com

E-mail Address

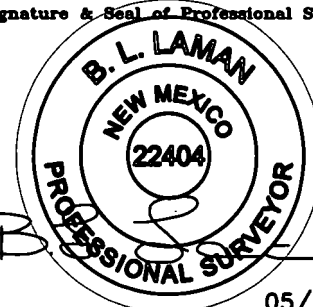
SURVEYOR CERTIFICATION

I hereby certify that the well location shown on this plat was plotted from field notes of actual surveys made by me or under my supervision, and that the same is true and correct to the best of my belief.

5/2019

Date of Survey

Signature & Seal of Professional Surveyor



05/20/19

Certificate No. 22404

B.L. LAMAN

DRAWN BY: CM

Intent ☒ As Drilled ☐

API # 30-025-46835			
Operator Name: DEVON ENERGY PRODUCTION COMPANY, LP.		Property Name: BELL LAKE 24 FED	Well Number 015H

Kick Off Point (KOP)

UL	Section 24	Township 24S	Range 32E	Lot	Feet 227	From N/S FSL	Feet 330	From E/W FWL	County LEA
Latitude 32.196533					Longitude -103.635806				NAD 83

First Take Point (FTP)

UL M	Section 24	Township 24-S	Range 32-E	Lot	Feet 100	From N/S SOUTH	Feet 330	From E/W WEST	County LEA
Latitude 32.196165					Longitude 103.635807				NAD 83

Last Take Point (LTP)

UL D	Section 24	Township 24-S	Range 32-E	Lot	Feet 100	From N/S NORTH	Feet 330	From E/W WEST	County LEA
Latitude 32.210198					Longitude 103.635775				NAD 83

Is this well the defining well for the Horizontal Spacing Unit? ☐ **N**

Is this well an infill well? ☐ **Y**

If infill is yes please provide API if available, Operator Name and well number for Defining well for Horizontal Spacing Unit.

API # 30-025-41182			
Operator Name: Devon Energy Production Co.		Property Name: Bell Lake 24 Fed	Well Number 1H

KZ 06/29/2018