

District I
1625 N. French Dr., Hobbs, NM 88240
Phone: (575) 393-6161 Fax: (575) 393-0720
District II
811 S. First St., Artesia, NM 88210
Phone: (575) 748-1283 Fax: (575) 748-9720
District III
1000 Rio Brazos Road, Aztec, NM 87410
Phone: (505) 334-6178 Fax: (505) 334-6170
District IV
1220 S. St. Francis Dr., Santa Fe, NM 87505
Phone: (505) 476-3460 Fax: (505) 476-3462

HOBBS State of New Mexico
Energy, Minerals & Natural Resources Department
OIL CONSERVATION DIVISION
1220 South St. Francis Dr.
Santa Fe, NM 87505
RECEIVED

Form C-102
Revised August 1, 2011
Submit one copy to appropriate
District Office
AMENDED REPORT

WELL LOCATION AND ACREAGE DEDICATION PLAT

30-025-46116	97994	WC-025 G-06 S253329D; UPR BONE SPRING
Property Code 319775	Property Name VACA DRAW 20-17 FEDERAL	Well Number 43H
OGRIID No. 215099	Operator Name CIMAREX ENERGY CO.	Elevation 3407.9'

Surface Location

UL or lot no.	Section	Township	Range	Lot Idn	Feet from the	North/South line	Feet from the	East/West line	County
O	20	25S	33E		390	SOUTH	2140	EAST	LEA

Bottom Hole Location If Different From Surface

UL or lot no.	Section	Township	Range	Lot Idn	Feet from the	North/South line	Feet from the	East/West line	County
B	17	25S	33E		101	NORTH	2166	EAST	LEA
Dedicated Acres 640	Joint or Infill	Consolidation Code	Order No.						

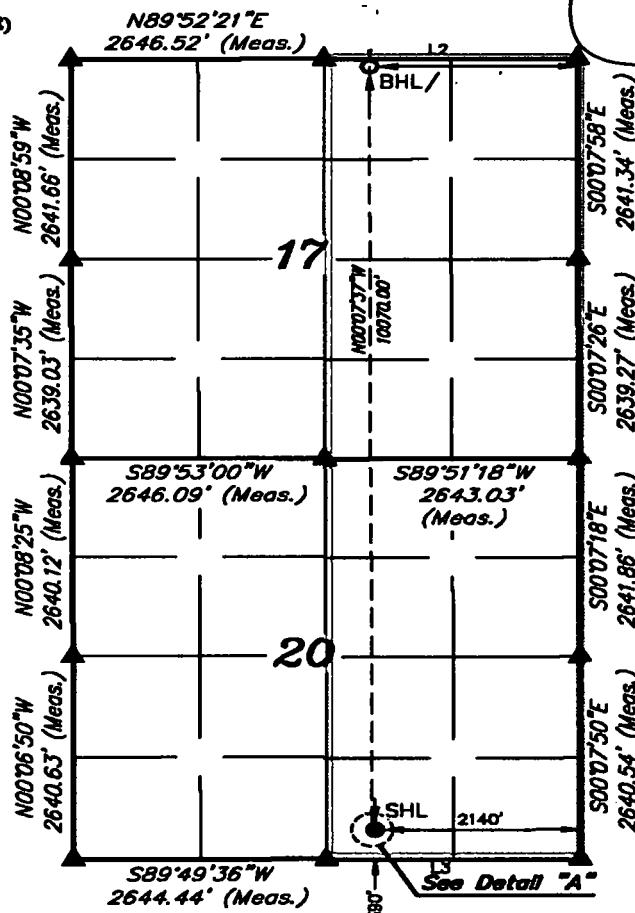
No allowable will be assigned to this completion until all interests have been consolidated or a non-standard unit has been approved by the division.

- = SURFACE HOLE LOCATION
- ◆ = LANDING POINT/FIRST TAKE POINT
- = BOTTOM HOLE LOCATION/
LAST TAKE POINT
- ▲ = SECTION CORNER LOCATED



SCALE
REV: 2 06-19-19 R.J. (BHL CHANGE)

NAD 83 (SURFACE HOLE LOCATION)
LATITUDE = 32°08'34.63" (32.109903°)
LONGITUDE = 103°35'13.68" (103.592679°)
NAD 27 (SURFACE HOLE LOCATION)
LATITUDE = 32°08'35.20" (32.109779°)
LONGITUDE = 103°35'13.95" (103.592208°)
STATE PLANE NAD 83 (N.M. EAST)
N: 404507.12' E: 770659.89'
STATE PLANE NAD 27 (N.M. EAST)
N: 404449.34' E: 779475.72'



NOTE:

- Distances referenced on plat to section lines are perpendicular.
- Basis of Bearing is a Transverse Mercator Projection with a Central Meridian of W103°33'00"

OPERATOR CERTIFICATION

I hereby certify that the information contained herein is true and complete to the best of my knowledge and belief, and that this organization either owns a working interest or undivided mineral interest in the land including the proposed bottom hole location or has a right to drill this well at this location pursuant to a contract with an owner of such a mineral or working interest, or a compulsory pooling order or other authority authorizing drilling order herewith and well completion.

2-1-2020

Signature Date

Terri Stathem

Printed Name
tstathem@cimarex.com

E-mail Address

SURVEYOR CERTIFICATION

I hereby certify that the well location shown on this plat was plotted from field notes of actual surveys made by me or under my supervision, and that the same is true and correct to the best of my belief.

July 25, 2018

Date of Survey
Signature and Seal of Professional Surveyor:



Certificate Number:

Intent ☐ As Drilled ☒

API #
30-025-46116

Operator Name:
Cimarex Energy Co. (215099)

Property Name:
Vaca Draw 20-17 Federal

Well Number
43H

Kick Off Point (KOP)

UL	Section	Township	Range	Lot	Feet	From N/S	Feet	From E/W	County
O	20	25S	33E		368	South	2179	East	Lea
Latitude					Longitude			NAD	
32.109839					-103.592806			83	

First Take Point (FTP)

UL	Section	Township	Range	Lot	Feet	From N/S	Feet	From E/W	County
O	20	25S	33E		933	South	2175	East	Lea
Latitude					Longitude			NAD	
32.110667					-103.592808			83	

Last Take Point (LTP)

UL	Section	Township	Range	Lot	Feet	From N/S	Feet	From E/W	County
B	17	25S	33E		101	North	2166	East	Lea
Latitude					Longitude			NAD	
32.137575					-103.59275			83	

Is this well the defining well for the Horizontal Spacing Unit?

☐ No

Is this well an infill well?

☐ Yes

If infill is yes please provide API if available, Operator Name and well number for Defining well for Horizontal Spacing Unit.

API #
30-025-46117

Operator Name:
Cimarex Energy Co.

Property Name:
Vaca Draw 20-17 Federal

Well Number
44H

KZ 06/29/2018