

District I
1625 N. French Dr., Hobbs, NM 88240
Phone: (575) 393-6161 Fax: (575) 393-0720
District II
811 S. First St., Artesia, NM 88210
Phone: (575) 748-1283 Fax: (575) 748-9720
District III
1000 Rio Brazos Road, Aztec, NM 87410
Phone: (505) 334-6178 Fax: (505) 334-6170
District IV
1220 S. St. Francis Dr., Santa Fe, NM 87505
Phone: (505) 476-3460 Fax: (505) 476-3462

State of New Mexico
Energy, Minerals & Natural Resources Department
OIL CONSERVATION DIVISION
1220 South St. Francis Dr.
Santa Fe, NM 87505

Form C-102
Revised August 1, 2011
Submit one copy to appropriate
District Office

☐ AMENDED REPORT

RECEIVED

WELL LOCATION AND ACREAGE DEDICATION PLAT

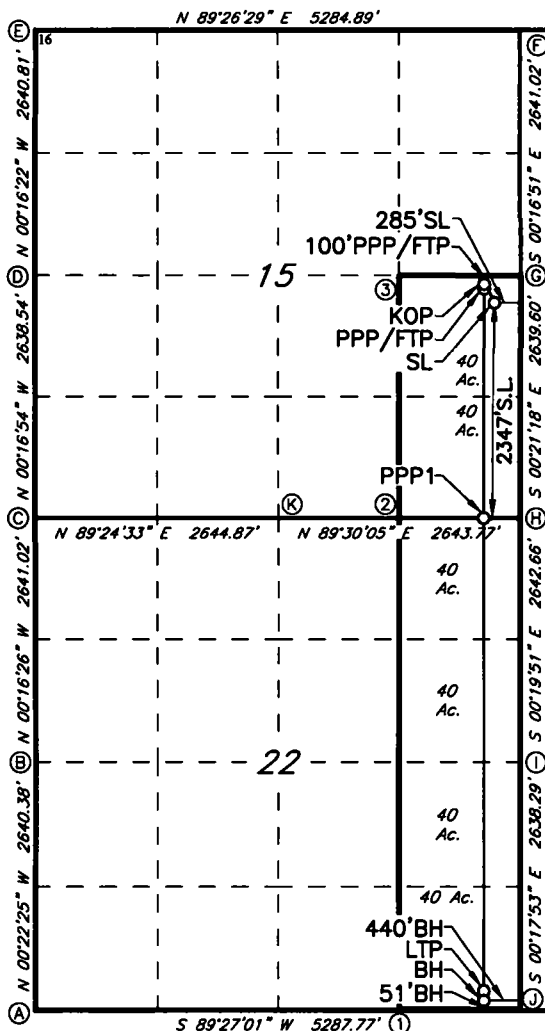
1 API Number 30-025- 46824	2 Pool Code 96603	3 Pool Name TRISTE DRAW; BONESPRING
4 Property Code 390516 725016	5 Property Name GHOST RIDER 22 15 FEDERAL COM	
6 Well Number 101H	7 Elevation 3580'	
8 OGRID NO. 873	9 Operator Name APACHE CORPORATION	

10 Surface Location									
UL or lot no.	Section	Township	Range	Lot Idn	Feet from the	North/South line	Feet From the	East/West line	County
I	15	24S	32E		2347	SOUTH	285	EAST	LEA

11 Bottom Hole Location If Different From Surface									
UL or lot no.	Section	Township	Range	Lot Idn	Feet from the	North/South line	Feet from the	East/West line	County
P	22	24S	32E		51	SOUTH	440	EAST	LEA

12 Dedicated Acres	13 Joint or Infill	14 Consolidation Code	15 Order No.
240			

No allowable will be assigned to this completion until all interest have been consolidated or a non-standard unit has been approved by the division.



GEODETIC DATA
NAD 83 GRID - NM EAST
SURFACE LOCATION (SL)
N 443263.6 - E 751053.7
LAT: 32.216787° N
LONG: 103.654886° W
KICK OFF POINT (KOP)
2587' FSL & 394' FEL
N 443502.4 - E 751043.7
LAT: 32.217446° N
LONG: 103.655237° W
MD: 9415.9 - TVD: 9405.0
PROPOSED PENETRATION POINT/FIRST TAKE POINT (PPP/FTP)
2544' FSL & 394' FEL
N 443454.4 - E 751043.7
LAT: 32.217314° N
LONG: 103.655238° W
MD: 9627.4 - TVD: 9608.7
PROPOSED PENETRATION POINT 1 (PPP1)
410' FEL
N 440915.7 - E 751043.2
LAT: 32.210335° N
LONG: 103.655291° W
MD: 12273.2 - TVD: 9904.4
LAST TAKE POINT (LTP)
100' FSL & 440' FEL
N 435735.2 - E 751042.3
LAT: 32.196098° N
LONG: 103.655400° W
MD: 17455.8 - TVD: 9914.3
BOTTOM HOLE (BH)
N 435685.8 - E 751042.3
LAT: 32.195860° N
LONG: 103.655401° W
MD: 17505.2 - TVD: 9914.3

CORNER DATA
NAD 83 GRID - NM EAST
A: FOUND BRASS CAP "1916"
N 435588.7 - E 746198.0
B: FOUND BRASS CAP "1916"
N 438228.5 - E 746178.8
C: FOUND BRASS CAP "1916"
N 440869.0 - E 746166.1
D: FOUND BRASS CAP "1916"
N 443506.9 - E 746153.2
E: FOUND BRASS CAP "1916"
N 446147.2 - E 746140.6
F: CALCULATED CORNER
N 446198.7 - E 751424.1
G: FOUND BRASS CAP "1916"
N 443558.2 - E 751437.1
H: FOUND BRASS CAP "1916"
N 440919.2 - E 751453.4
I: FOUND BRASS CAP "1916"
N 438277.2 - E 751468.7
J: FOUND BRASS CAP "1916"
N 435639.5 - E 751482.4
K: FOUND BRASS CAP "1916"
N 440896.2 - E 748810.3
CALCULATED POINTS
1: N 435626.8 - E 750160.8
2: N 440907.7 - E 750131.9
3: N 443545.4 - E 750117.6

17 OPERATOR CERTIFICATION

I hereby certify that the information contained herein is true and complete to the best of my knowledge and belief, and that this organization either owns a working interest or unleased mineral interest in the land including the proposed bottom hole location or has a right to drill this well at this location pursuant to a contract with an owner of such a mineral or working interest, or to a voluntary pooling agreement or a compulsory pooling order heretofore entered by the division.

Sorina L Flores 9/12/2019

Signature Date
SORINA L. FLORES

Printed Name
sorina.flores@apachecorp.com
E-mail Address

18 SURVEYOR CERTIFICATION

I hereby certify that the well location shown on this plat was plotted from field notes of actual surveys made by me or under my supervision, and that the same is true and correct to the best of my belief.

03-27-2019

Date of Survey

Signature and Seal of Professional Surveyor

10034
Certificate Number



Job No.: LS19030394DP

Intent ☐ XXX ☒ As Drilled ☐

API #

Operator Name:
APACHE CORPORATION

Property Name:
GHOST RIDER 22 15 FEDERAL COM

Well Number
101H

Kick Off Point (KOP)

UL	Section	Township	Range	Lot	Feet	From N/S	Feet	From E/W	County
I	15	24S	32E		2587	SOUTH	394	EAST	LEA
Latitude					Longitude				NAD
32.2174460					103.6552373				83

First Take Point (FTP)

UL	Section	Township	Range	Lot	Feet	From N/S	Feet	From E/W	County
I	15	24S	32E		2544	SOUTH	394	EAST	LEA
Latitude					Longitude				NAD
32.2173141					103.6552383				83

Last Take Point (LTP)

UL	Section	Township	Range	Lot	Feet	From N/S	Feet	From E/W	County
P	22	24S	32E		100	SOUTH	440	EAST	LEA
Latitude					Longitude				NAD
32.1960962					103.6554002				83

Is this well the defining well for the Horizontal Spacing Unit?

☒ YES

Is this well an infill well?

☐ NO

If infill is yes please provide API if available, Operator Name and well number for Defining well for Horizontal Spacing Unit.

API #

Operator Name:

Property Name:

Well Number

KZ 06/29/2018