

DISTRICT I
1626 N. FRENCH DR., HOBBBS, NM 88240
Phone: (505) 834-6161 Fax: (505) 834-6780

DISTRICT II
811 S. FIRST ST., ARTESIA, NM 88210
Phone: (505) 746-1583 Fax: (505) 746-9780

DISTRICT III
1000 RIO BRAZOS RD., AZTEC, NM 87410
Phone: (505) 834-6178 Fax: (505) 834-6170

DISTRICT IV
1250 S. ST. FRANCIS DR., SANTA FE, NM 87505
Phone: (505) 476-9460 Fax: (505) 476-9465

State of New Mexico
Energy, Minerals & Natural Resources Department
OIL CONSERVATION DIVISION
1220 SOUTH ST. FRANCIS **HOBBBS OCD**
Santa Fe, New Mexico 87505

Form C-102

Revised August 1, 2011

Submit one copy to appropriate

District Office

FEB 20 2020

☐ AMENDED REPORT

WELL LOCATION AND ACREAGE DEDICATION PLAT

RECEIVED

API Number 30025-46894	Pool Code 98117	Well Name WC-025 6-09 926504N, WC
Property Code 327125	Property Name COBBER 21-28 FED	Well Number 11H
OGRID No. 6137	Operator Name DEVON ENERGY PRODUCTION COMPANY, L.P.	Elevation 3306.6'

Surface Location

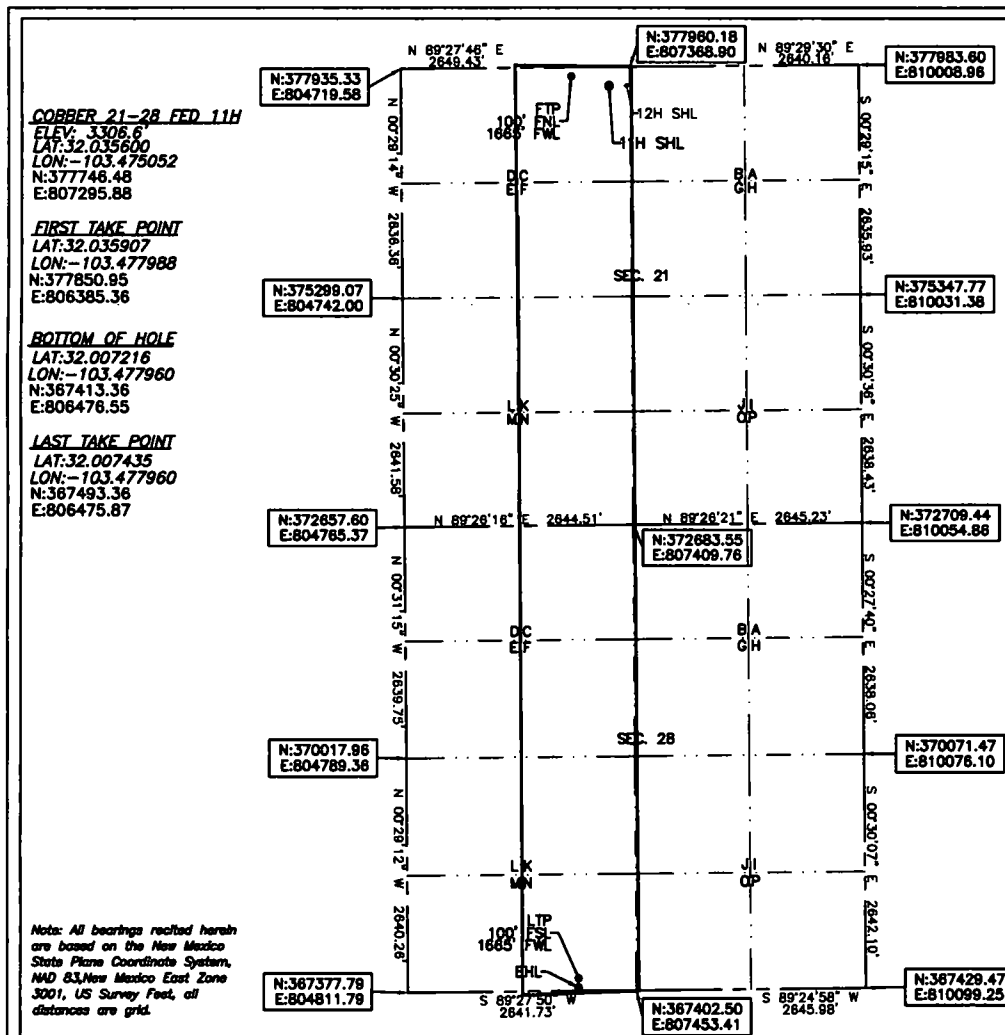
UL or lot No.	Section	Township	Range	Lot Idn	Feet from the	North/South line	Feet from the	East/West line	County
C	21	26-S	34-E		213	NORTH	2575	WEST	LEA

Bottom Hole Location If Different From Surface

UL or lot No.	Section	Township	Range	Lot Idn	Feet from the	North/South line	Feet from the	East/West line	County
N	28	26-S	34-E		20	SOUTH	1665	WEST	LEA

Dedicated Acres	Joint or Infill	Consolidation Code	Order No.
320			

NO ALLOWABLE WILL BE ASSIGNED TO THIS COMPLETION UNTIL ALL INTERESTS HAVE BEEN CONSOLIDATED
OR A NON-STANDARD UNIT HAS BEEN APPROVED BY THE DIVISION



OPERATOR CERTIFICATION

I hereby certify that the information herein is true and complete to the best of my knowledge and belief, and that this organization either owns a working interest or unless mineral interest in the land including the proposed bottom hole location or has a right to drill this well at this location pursuant to a contract with an owner of such mineral or working interest, or to a voluntary pooling agreement or a compulsory pooling order heretofore entered by the division.

Rebecca Deal 10/2/2019
Signature Date

Rebecca Deal, Regulatory Analyst
Printed Name

rebecca.deal@dvn.com

E-mail Address

SURVEYOR CERTIFICATION

I hereby certify that the well location shown on this plat was plotted from field notes of actual surveys made by me or under my supervision, and that the same is true and correct to the best of my belief.

12/2018

Date of Survey

Signature & Seal of Professional Surveyor



10/1/19

Certificate No. 22404 B.L. LAMAN

DRAWN BY: CM

Intent ☒ As Drilled ☐

API #
30-024-46874

Operator Name: DEVON ENERGY PRODUCTION COMPANY, LP.	Property Name: COBBER 21-28 FED	Well Number 11H
---	------------------------------------	--------------------

Kick Off Point (KOP)

UL	Section 21	Township 26S	Range 34E	Lot	Feet 50	From N/S FNL	Feet 1665	From E/W FWL	County LEA
Latitude 32.036068					Longitude -103.477953			NAD 83	

First Take Point (FTP)

UL	Section 21	Township 26	Range 34	Lot	Feet 100	From N/S NORTH	Feet 1665	From E/W WEST	County LEA
C									
Latitude 32.035907					Longitude 103.477988			NAD 83	

Last Take Point (LTP)

UL	Section 28	Township 26	Range 34	Lot	Feet 100	From N/S SOUTH	Feet 1665	From E/W WEST	County LEA
N									
Latitude 32.007435					Longitude 103.477960			NAD 83	

Is this well the defining well for the Horizontal Spacing Unit? ☒

Is this well an infill well? ☐

If infill is yes please provide API if available, Operator Name and well number for Defining well for Horizontal Spacing Unit.

API #	Operator Name: DEVON ENERGY PRODUCTION CO., L.P.	Property Name: COBBER 21-28 FED 28	Well Number 5H
-------	--	---------------------------------------	-------------------

KZ 06/29/2018